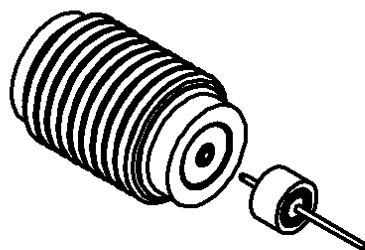
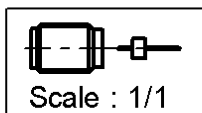
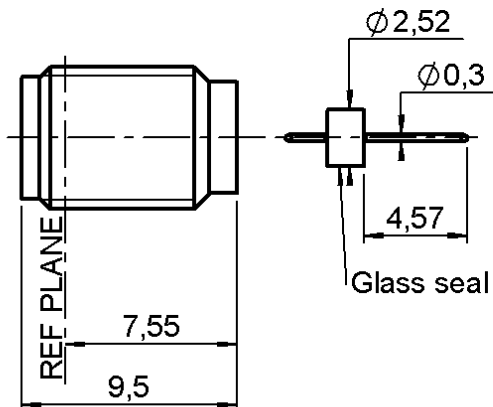


**SCREW ON FEMALE RECEPTACLE**

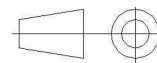
**HERMETIQUE - PERLE DE VERRE**

**R125.638.001**

Series : SMA



All dimensions are in mm.



COMPONENTS	MATERIALS	PLATINGS (µm)
BODY	STAINLESS STEEL	PASSIVATED
CENTER CONTACT	BERYLLIUM COPPER	GOLD 1.3 OVER NICKEL2
OUTER CONTACT	-	-
INSULATOR	PTFE	-
GASKET	-	-
OTHERS PARTS	SILVER P	GOLD 1.3 OVER NICKEL2
-	-	-
-	-	-

Issue : 0905 D

In the effort to improve our products, we reserve the right to make changes judged to be necessary.



**SCREW ON FEMALE RECEPTACLE****HERMETIQUE - PERLE DE VERRE****R125.638.001**

Series : SMA

**PACKAGING**

Standard	Unit	Other
<b>1</b>	<b>-</b>	<b>Contact us</b>

**SPECIFICATION****ELECTRICAL CHARACTERISTICS**

Impedance	<b>50</b>	$\Omega$
Frequency	<b>0-18</b>	GHz
VSWR	<b>1.06 + 0,0025</b>	x F(GHz) Maxi
Insertion loss	<b>0.07*</b>	$\sqrt{F}(\text{GHz})$ dB Maxi
RF leakage	<b>- ( 60</b>	- F(GHz)) dB Maxi
Voltage rating	<b>500</b>	Veff Maxi
Dielectric withstanding voltage	<b>1000</b>	Veff mini
Insulation resistance	<b>5000</b>	M $\Omega$ mini

**ENVIRONMENTAL**

Operating temperature	<b>-65/+125</b>	$^{\circ}\text{C}$
Hermetic seal	<b>NA</b>	Atm.cm3/s
Panel leakage	<b>NA</b>	

**OTHERS CHARACTERISTICS**

Assembly instruction

Others :

\* Coaxial Transmission Line Only

**MECHANICAL CHARACTERISTICS**

Center contact retention	
Axial force – Mating end	<b>27</b> N mini
Axial force – Opposite end	<b>27</b> N mini
Torque	<b>2.8</b> N.cm mini

## Recommended torque

Mating	<b>NA</b> N.cm
Panel nut	<b>190</b> N.cm

Mating life	<b>500</b> Cycles mini
Weight	<b>1,7500</b> g

Issue : 0905 D

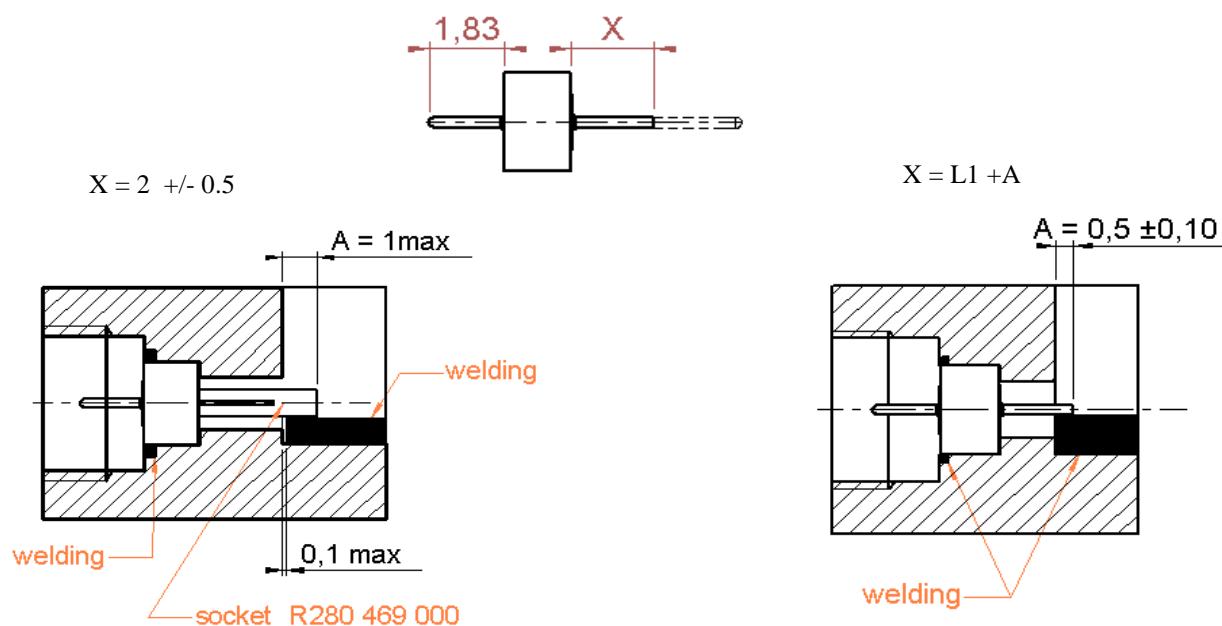
In the effort to improve our products, we reserve the right to make changes judged to be necessary.



Series : **SMA**[illegible]

**SCREW ON FEMALE RECEPTACLE****HERMETIQUE - PERLE DE VERRE****R125.638.001**

Series : SMA

**ASSEMBLY INSTRUCTIONS****GLASS BEAD**

- 1- Adjust X by cutting the pin if necessary.
- 2- Introduce the glass bead into its housing as here above (with the mounted socket)
- 3- Weld the ring by putting a welding wire in the groove.
- 4- Weld the pin (or socket) on the track. Beware of putting too much welding

**IMPORTANT :** for maximum RF characteristics the link track/pin must be as thin as possible.

We advise you to respect rigorously the A dimension, by welding accurately the bead pin directly on the track (right drawing).

**CONNECTOR**

-Screw the connector into the housing. Tighten it up to 190 cmN +/- 10 cmN

(use special tooling set RADIAL R282 341 010)

**Issue :** 0905 D

In the effort to improve our products, we reserve the right to make changes judged to be necessary.



# Mouser Electronics

Authorized Distributor

Click to View Pricing, Inventory, Delivery & Lifecycle Information:

Radial:

[R125638001](#)