



Manage this device with Digi Remote Manager

DIGI CONNECT SENSOR+

Easy-to-install and roll-out ready, battery-powered cellular gateway solution

Digi Connect® Sensor+ is a fully integrated, battery powered cellular gateway with I/O for connecting to a wide range of external sensors. Designed to work in rugged industrial environments, the Connect Sensor+ is the ideal solution for companies looking to add remote monitoring and diagnostics in places where power is not easily available. Its easy installation, reliability and low data usage make remote monitoring possible in areas where it was previously cost prohibitive.

Local protocol support allows the Connect Sensor+ to communicate with Modbus sensors and capture sensor diagnostics along with data. This enables users to not

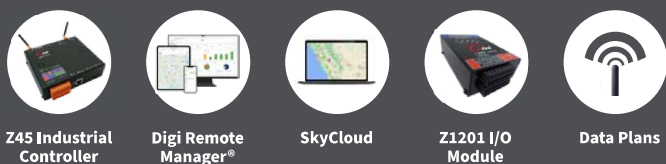
only monitor their data but also remotely diagnose the health of their sensors. Digi Connect Sensor+ leverages Digi Remote Manager® (Digi RM), enabling customers who need to monitor large numbers of sensors to easily integrate that data into existing applications or work with third-party applications. Gain critical insights into your deployed devices and manage your network with Digi RM — the command center for your deployment.

Digi Connect Sensor+ works with Digi Connect Wizard. This smartphone application is the first of its kind for this type of battery powered gateway. It gives local installers, technicians or drivers instant feedback of sensor values over Bluetooth®.

BENEFITS

- Weatherproof enclosure with wide temperature range makes it ideal for use in all environments
- Configurable read and report intervals with threshold and delta alarms
- Multiple configurable I/O make it possible to connect to multiple sensor types
- Modbus protocol support
- External, configurable power outputs eliminate the need for sensor power supplies
- Global cellular coverage
- Digi Remote Manager platform for easy management

APPLICATION EXAMPLE



SPECIFICATIONS

Digi Connect® Sensor+

WWAN	
2G BANDS	GSM 850, GSM 900, DCS 1800, PCS 1900
3G BANDS	FDD B1, B2, B4, B5, B8
LTE CATEGORY 1	Verizon: bands 2, 4, 13 AT&T, T-Mobile: bands 2, 4, 5, 12 with 3G/2G fallback
ANTENNA CONNECTOR	External SMA
SIM SLOTS	1, standard size
MANAGEMENT	
CONFIGURATION AND MANAGEMENT	Digi Remote Manager® (cloud-based); local USB to serial CLI
POWER (Does not include power draw of external sensors)	
EXTERNAL POWER INPUT RANGE	8 VDC to 30 VDC
BATTERY AND BATTERY LIFE	7.2 V, 14.5 Ah, lithium thionyl chloride, non-rechargeable, replaceable; approximately 2 years (at 2 reads/transmits per day)
POWER DRAW, SLEEPING	86.4 uW
POWER DRAW, CONTINUOUS MONITOR	400 mW
POWER DRAW, PEAK TRANSMIT	14.4 watts
SENSOR PROTOCOL SUPPORT	
MODBUS	Modbus RTU and ASCII, connect to up to 4 devices
ANALOG I/O	
INPUTS	4, configurable as 4/20 mA or 0-10 VDC analog inputs
INPUT VOLTAGE RANGE	0-10.5 V (analog input)
INPUT CURRENT RANGE	4-22 mA (current loop input)
INTERNAL A/D CONVERTER	12 bit
DIGITAL I/O	
PORTS	1 digital I/O or pulse counter input
INPUT RANGE	0-0.6 VDC logic low; 2.2 V-30 VDC logic high
MAX INPUT VOLTAGE	30 VDC
MAX PULSE COUNT FREQUENCY	2 kHz
DIGITAL OUTPUT	Open collector output, max sink current 450 mA
OUTPUT POWER	
PORTS	5
OUTPUT VOLTAGE OPTIONS	3.3, 5, 15, 24 VDC
MAX CURRENT OUTPUT	200 mA
ENVIRONMENTAL	
OPERATING TEMPERATURES	-35° C to 70° C (-31° F to 158° F)
STORAGE TEMPERATURE	-40° C to 85° C (-40° F to 185° F)
RELATIVE HUMIDITY	90%
BATTERY DISCHARGE	<1%/year if stored at 30° C (86° F)
PHYSICAL	
DIMENSIONS (L x W x H)	152.4 mm x 108.4 mm, 127 mm including glands, x 74.6 mm (6 in x 4.27 in, 5 in including glands, x 2.94 in)
WEIGHTS	264 g (0.58 lb)
LEDS INDICATORS	Battery, cellular, sensor and Bluetooth®
ENCLOSURE	Lexan/IP66

SPECIFICATIONS

Digi Connect® Sensor+

REGULATORY APPROVALS

SAFETY

UL 60950-1, CAN/CSA C22.2 No. 60950-1-01, IEC 60950-1:2005 (Second Edition); Am1:2009 + Am2:2013, EN 60950-1:2006 / A11:2009 / A1:2010 / A12:2011 / A2:2013 and EN 60950-22:2006;
Class 1, Division II, groups A,B,C,D; ANSI/ISA 12.12.01:2015, CAN/CSA C22.2 No 213-15, 1st Ed
ATEX EN 60079-0:2012+A11:2013, EN 60079-15:2010, eII 3 G Ex nA nC IIC T6 Gc

EMISSIONS

FCC part 15 Subpart B class B, EN 55022: 2010/AC: 2011 class B, IECS-003 Issue 5: 2012 class B

IMMUNITY

EN 55024:2010

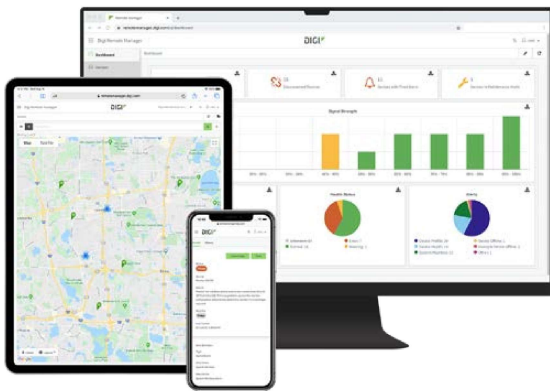
WARRANTY

PRODUCT WARRANTY

3-year*

*Standard 3-year warranty upgradeable to 5 years with purchase of a Digi Remote Manager Premier 5-year subscription applicable to the product purchased only at the time of product purchase and with product registration at that time in Digi Remote Manager.

DIGI REMOTE MANAGER®



Digi Remote Manager is the technology platform that brings networks to the next level, allowing networks — and the people who manage them — to work smarter. With Digi Remote Manager you can transform a multitude of dispersed IoT devices into a dynamic, intelligent network. Now you can easily deploy, monitor and diagnose thousands of mission-critical devices from a single point of command — on your desktop, tablet or phone. All the while, its software-defined security diligently safeguards your entire Digi ecosystem.

Learn more at www.digi.com/digi-remote-manager

CAPABILITIES

- Activate, monitor and diagnose your mission-critical devices from a single point of command and control
- Schedule key operations — including firmware updates and file management — on a single device or on a group of devices, keeping your network functionality up-to-date and maintaining compliance standards
- Manage edge devices out-of-band via console terminal access
- Keep tabs on device health and connectivity across device deployments of any size
- Create detailed reports and enable real-time alerts for specified conditions
- Integrate device data through open APIs to gain deeper insights and control with third-party applications
- Report and alert on performance statistics, including connection history, signal quality, latency, data usage and packet loss

INFRASTRUCTURE

- Hosted in a commercial-grade cloud server environment that meets SOC 1®, SOC 2® and SOC 3® standards
- Superior availability, operating to 99.9% or greater
- Open APIs available to support application development

SECURITY

- More than 175 security controls in place to protect your data
- Member of the Center for Internet Security® (CIS®)
- Enables compliance with security frameworks like ISO27002, HIPAA, NIST and more
- Earned Skyhigh's CloudTrust™ Program highest rating of Enterprise-Ready

PART NUMBERS**DIGI CONNECT SENSOR+**

CSENSE-A210	Digi Connect Sensor+ — Verizon LTE
CSENSE-A210-N	Digi Connect Sensor+ — Verizon LTE, no battery
CSENSE-A310	Digi Connect Sensor+ — AT&T and T-Mobile LTE
CSENSE-A310-N	Digi Connect Sensor+ — AT&T and T-Mobile LTE, no battery

*Antennas and accessories sold separately unless otherwise noted.

PART NUMBERS**ACCESSORIES**

76000974	Digi Connect Sensor+ Wall Mount Kit
76000912	Digi Connect Sensor+ Battery
76000927	Digi Connect Sensor+ Magnetic Key Chain (2-Pack)
76002066	Digi Connect Sensor+ Magnetic Mount Kit
76000926	Antenna — Cellular, 3G/4G/LTE (indoor)
76002067	Antenna — Cellular, 3G/4G/LTE (outdoor)

PART NUMBERS**DIGI REMOTE MANAGER®**

DIGI-RM-STD-1YR	Digi Remote Manager Standard — 1-year subscription
DIGI-RM-PRM-1YR	Digi Remote Manager Premier — 1-year subscription
DIGI-RM-PRM-3YR	Digi Remote Manager Premier — 3-year subscription
DIGI-RM-PRM-5YR	Digi Remote Manager Premier — 5-year subscription

**FOR MORE INFORMATION
PLEASE VISIT DIGI.COM**

DIGI SERVICE AND SUPPORT / You can purchase with confidence knowing that Digi is always available to serve you with expert technical support and our industry leading warranty. For detailed information visit www.digi.com/support.

© 1996-2022 Digi International Inc. All rights reserved.
All trademarks are the property of their respective owners.

91003579
B7/722

DIGI INTERNATIONAL WORLDWIDE HQ
877-912-3444 / 952-912-3444 / www.digi.com

DIGI INTERNATIONAL JAPAN
+81-3-5428-0261 / www.digi-intl.co.jp

DIGI INTERNATIONAL GERMANY
+49-89-540-428-0

DIGI INTERNATIONAL SINGAPORE
+65-6213-5380

DIGI INTERNATIONAL CHINA
+86-21-50492199 / www.digi.com.cn

