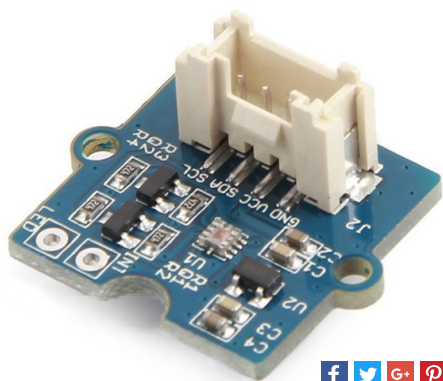


Grove - Sunlight Sensor

SKU 101020089

- Wide spectrum detection range
- 3.3V and 5V dual mode
- Detect sunlight directly
- I2C Interface
- Grove connector compatible

**IN STOCK** 17 AvailableQty: [ADD TO CART](#)

Description

Summer is coming, want to make a UV detector to know the UV index when you are under the sun? Grove - Sunlight Sensor is recommend here.

Grove - Sunlight Sensor is a multi-channel digital light sensor, which has the ability to detect UV-light, visible light and infrared light.

This device is based on SI1145, a new sensor from SiLabs. The SI1145 is a low-power, reflectance-based, infrared proximity, UV index and ambient light sensor with I2C digital interface and programmable-event interrupt output. This device offers excellent performance under a wide dynamic range and a variety of light sources including direct sunlight.

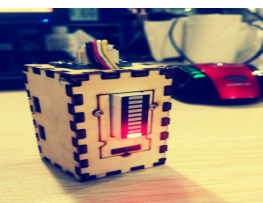
Grove - Sunlight Sensor include an on-board Grove connector, which help you to connect it your Arduino easily. You can use this device for making some project which need to detect the light, such as a simple UV detector.

FEATURES

- Digital light sensor
- Wide spectrum detection range
- Programmable configuration
- 3.3/5V Supply
- Detect sunlight directly
- Grove compatible

[See More](#)

Recipes

[DIY a Carry-on UV Detector](#)

Questions and Answers

Have a question about this? Ask people who own it.

Downloaded from [Arrow.com](#)

Documents

- [Wiki](#)
- [Lumen \(unit\)](#)
- [Spectrum](#)
- [Schematic in PDF](#)
- [Schematic in Eagle File](#)
- [SI1145 datasheet](#)
- [Ultraviolet index](#)
- [Github Repository for Grove - Sunlight ...](#)

Recommendations

- Grove - Moisture Sensor
- Grove - Air quality sensor v1.3
- Base Shield V2
- Grove - Temperature&Humidity...
- Grove - PIR Motion Sensor
- Grove - Water Sensor
- GrovePi+
- Grove - Temperature&Humidity...
- Grove - Dust Sensor



can I hookup, 2-3 together on the same seedstudio V4.2 with expansion board and still get IR, Vis, UV reading out to the ide?

pseudopaul on Dec 14,2016

Reply | upvote (0)

Hello, yes you can.

You need a software I2C because you can't connect 3 modules in one I2C bus.

About software I2C please refer to https://github.com/loovee/Arduino_SoftI2C

Thanks.

Loovee

ae on Dec 15,2016 10:05 AM

Reply | upvote (0)

Hi does grove support any sd card data logging together with grove sunlight and RTC?

devil-king1996 on May 01,2017 02:41 AM

Reply | upvote (0)



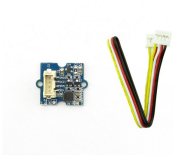
Hello! kindly tell me how much maximum lux that we can measure using this sensor module?

13234011 on Nov 30,2016

Reply | upvote (0)

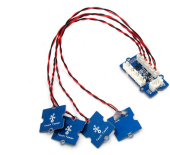
See More ▾

View History



Grove - 3-Axis Digital Gyro

ADD TO CART



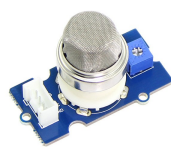
Grove - I2C Touch Sensor

ADD TO CART



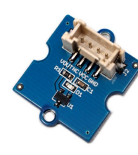
Grove - Gas Sensor(MQ2)

ADD TO CART



Grove - Gas Sensor(MQ5)

ADD TO CART



Grove - Hall Sensor

ADD TO CART



Grove - Universal 4 Pin Buckled 50cm...



Grove - Luminance Sensor



Grove - Relay



Grove - Digital Light Sensor



Grove - 4 pin Female Jumper to Grove...



Grove - Temperature & Humidity...



Grove - UV Sensor

Grove - Loudness Sensor

Grove - Gas Sensor(MQ2)

Grove - I2C Hub

Grove - Ultrasonic Ranger

POPULAR SEARCHES

- PCB Manufacturing
- PCB Stencil
- Arduino
- XBee
- Arduino Shield
- Beaglebone Black
- Raspberry Pi
- Raspberry Pi Touchscreen
- Linkit
- Cubieboard
- Beaglebone Cape
- FPGA
- Linkit ONE
- Crazyflie 2.0
- Raspberry Pi 3 Model B
- RF Explorer
- DSO Nano v3
- MediaTek X20
- HiKey Board
- rplidar
- raspberry pi relay
- RPLIDAR A2

SHIPPING INFORMATION

KNOWLEDGE BASE

HELP CENTER

Seed Info

- Reach Us
- Distributors
- Designers
- Careers
- Site Map

Customer Service

- Contact Us
- Customer Support
- Technical Support

Terms and Conditions

- Order Information
- Shipping Information
- Payment Information
- Warranty and Return
- Terms of use
- Privacy Policy

Stay Tuned

Subscribe to get the latest product releases, activities and tutorials from Seeed Studio.

