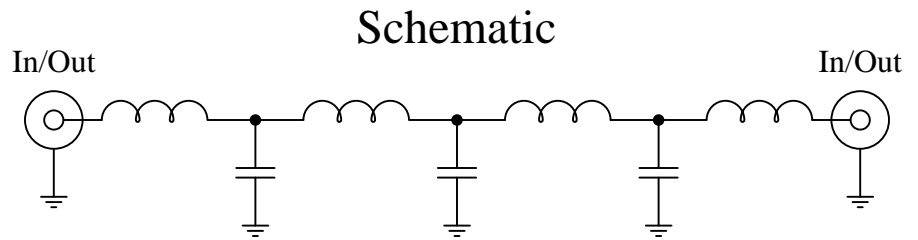


Part Number: CLPFL-0500

Low Pass Range  
DC to 500 MHz



### Features:

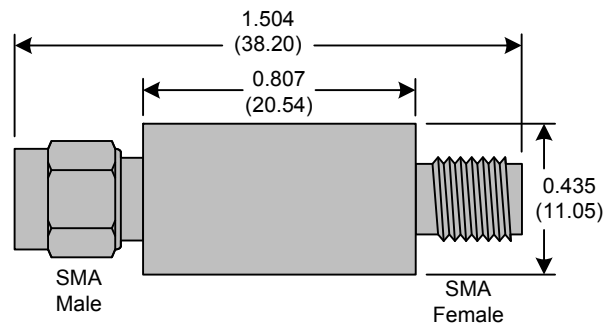
- 7<sup>th</sup> Order Butterworth Response
- 50Ω SMA Connectors

### Applications:

- Test Equipment
- Lab Use

### Maximum Ratings:

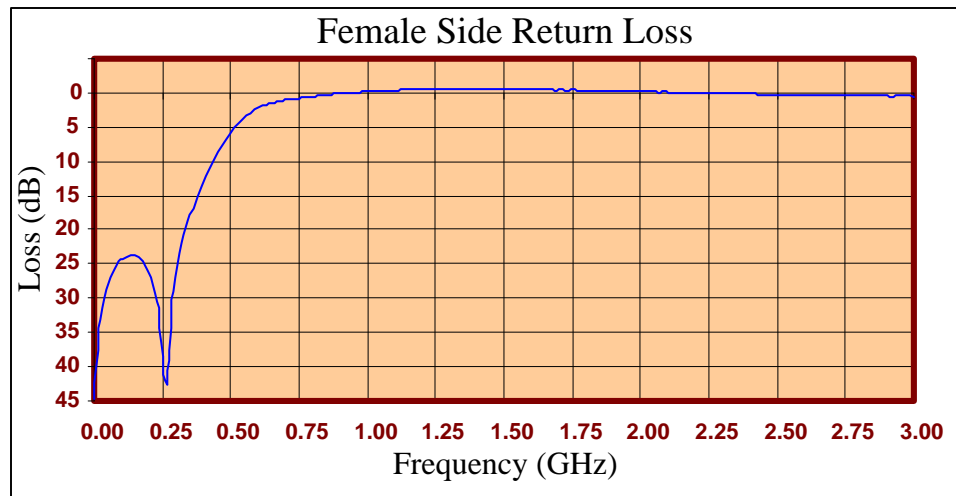
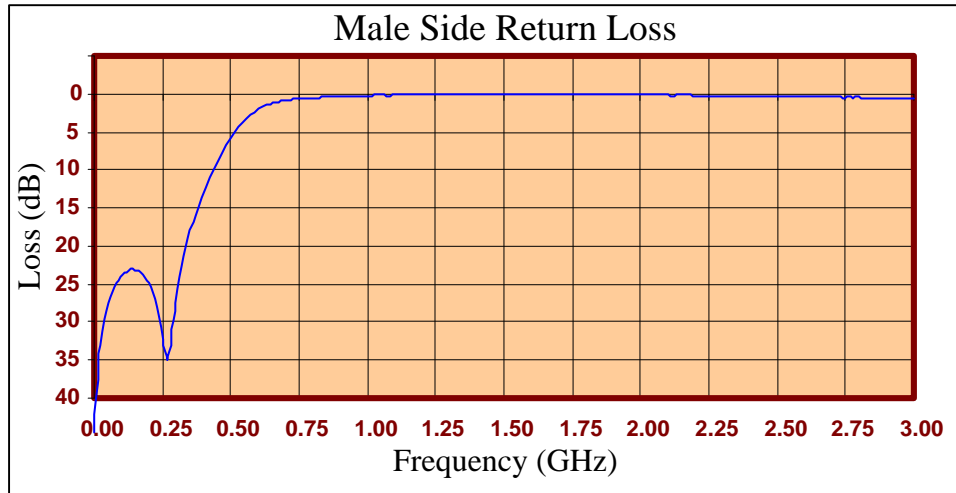
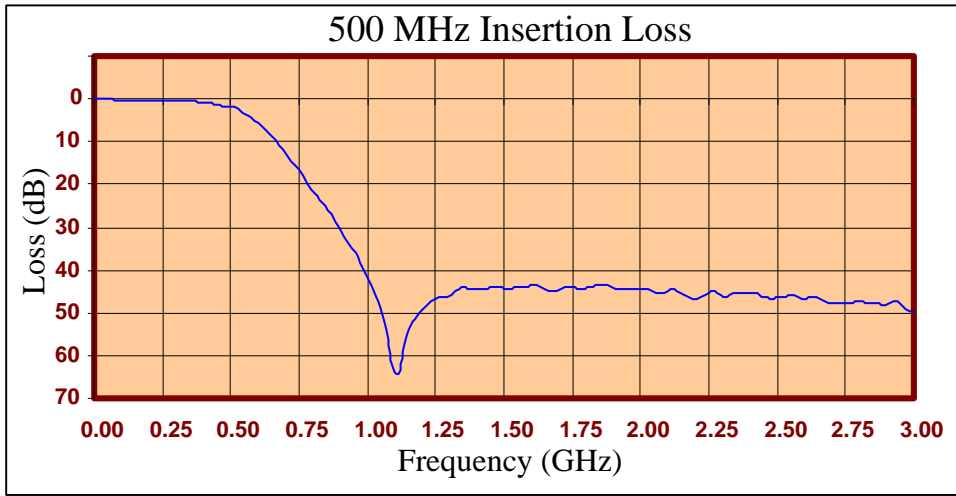
- +36dBm (4 Watts)
- Operating Temperature: -40°C to 85°C
- Storage Temperature: -55°C to 100°C



Crystek's new line of Low Pass Filters are designed in a rugged SMA housing. This filter line has excellent out-of-band rejection. Designed for Test Equipment and General Lab Use.

Rev C

Page 1 of 3





FREQ (MHz)	INSERTION LOSS (dB)	Male Return Loss (dB)	Female Return Loss (dB)
0.3	0.06	44.53	44.82
15.3	0.06	35.82	35.86
30.3	0.12	31.25	31.36
45.3	0.14	28.60	28.69
60.3	0.16	26.74	26.94
75.3	0.21	25.42	25.72
90.3	0.20	24.58	24.73
105	0.24	23.74	24.19
120	0.24	23.42	23.86
135	0.27	23.05	23.76
150	0.30	23.17	23.68
165	0.29	23.29	24.02
180	0.31	23.70	24.72
195	0.35	24.48	25.81
210	0.30	25.45	27.07
225	0.37	27.06	29.31
240	0.33	29.25	32.68
255	0.37	32.23	40.16
270	0.40	34.88	42.38
285	0.41	32.00	31.85
300	0.44	27.61	27.03
330	0.47	21.36	20.74
405	0.90	12.34	12.25
450	1.59	8.74	8.73
510	2.27	5.14	5.17
585	6.09	2.36	2.47
705	15.09	0.83	1.03
810	24.16	0.51	0.51
900	32.22	0.33	0.16
1005	44.82	0.23	-0.21
1245	46.09	0.06	-0.51
1500	44.09	0.03	-0.54
1755	43.83	0.07	-0.44
1995	44.15	0.11	-0.18
2250	45.13	0.23	0.05
2505	46.30	0.33	0.25
2745	47.77	0.46	0.37
3000	49.50	0.58	0.51

**Product Control:**

Crystek Part Number:	CLPFL-0500	Release Date:	04-Aug-2015
Revision Level:	C	Responsible:	K. Piotrowicz

Rev C
Page 3 of 3

