

Test Jacks 4 mm System



Type

BIL 30 / BIL 30 Au

4mm panel mount test jack, tin/ gold plated brass, M6 thread screw/ solder terminal, max. panel thickness 4mm

Pin Diameter

4 mm

PART NO. / Housing color

Nickel Plated	Gold Plated
● 930166100	● 930166700
● 930166101	● 930166701
● 930166102	● 930166702
● 930166103	● 930166703
● 930166104	● 930166704
● 930166105	● 930166705
● 930166106	● 930166706
● 930166107	● 930166707
● 930166109	● 930166709



BUG 10 / BUG 10 Au

4mm panel mount test jack, tin/ gold plated brass, M6 thread screw/ solder terminal, max. panel thickness 8mm

4 mm

Nickel Plated	Gold Plated
● 930175100	● 930175700
● 930175101	● 930175701
● 930175102	● 930175702
● 930175103	● 930175703
● 930175104	● 930175704
○ 930175107	○ 930175707

Technical Data

Contact Type	jack Ø 4 mm
Connection Type	M6 thread, solder terminal
Voltage Rating	30 VAC / 60 VDC
Measurement Category (IEC61010)	CAT I
Current Rating*	32 A
Contact Resistance	5 mOhm
Mounting Type	screw thread M6

Material Specifications

Jack Body	tin / gold plated brass
Contact Spring	-
Housing	Polyamide

Environmental Conditions

Temperature Range	-25°C to +85 °C (-13 to 185°F)
-------------------	--------------------------------

Flamability Rating

Housing	UL 94 V-2
---------	-----------

jack Ø 4 mm
M6 thread, solder terminal
30 VAC / 60 VDC
CAT I
16 A
5 mOhm
screw thread M6

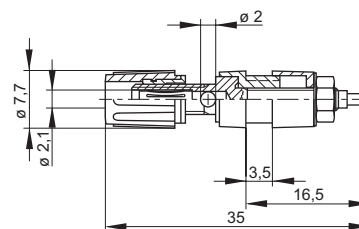
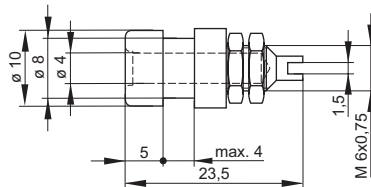
tin / gold plated brass
-
Polyamide

-25°C to +85 °C (-13 to 185°F)

UL 94 V-2

Drawing

Measurements are shown in millimeters.
Multiply by 0.03937 to convert to inches.



* Please consider derating graph on page 80.

Mouser Electronics

Authorized Distributor

Click to View Pricing, Inventory, Delivery & Lifecycle Information:

Altech:

[930166100](#) [930166700](#) [930175104](#) [930166109](#) [930166709](#) [930175100](#) [930175101](#) [930166106](#) [930166705](#)
[930175700](#) [930166104](#) [930166703](#) [930175102](#) [930166102](#) [930166702](#) [930175704](#) [930166103](#) [930166701](#)
[930175107](#) [930175701](#) [930175702](#) [930175707](#) [930175103](#) [930175703](#) [930166107](#) [930166706](#) [930166105](#)
[930166704](#) [930166707](#) [930166101](#)