



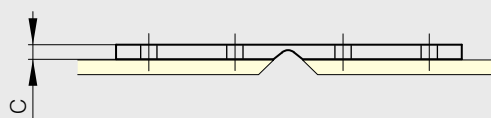
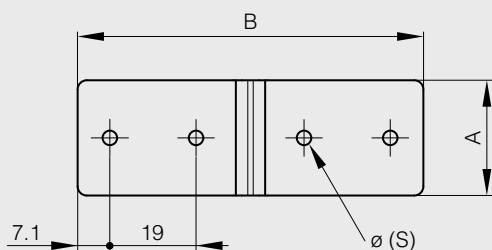
Hinges / Various hinges

Plastic hinges

Technical features :

- Temperatures: -40°C up to +80°C
- Can be fixed with: rivets, screws, nails or clamps
- Chemical resistance: oil, solvents, sea water and most chemical agents
- Tensile resistance: 180N/cm
- Material offers excellent fatigue resistance

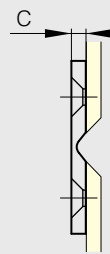
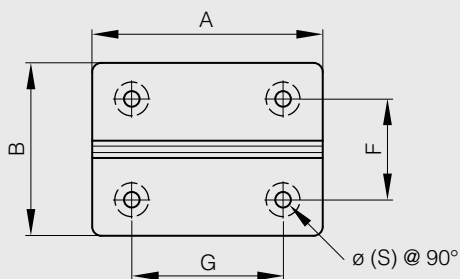
A	B	C	S	part number	material	finish	weight
25.4	76.2	3.2	3.2	54-7-3000	polypropylene	white	5g
25.4	76.2	3.2	3.2	54-7-3002	polypropylene	black	5g



Technical features :

- Temperatures: -40°C up to +80°C
- Can be fixed with: rivets, screws, nails or clamps
- Chemical resistance: oil, solvents, sea water and most chemical agents
- Tensile resistance: 180N/cm
- Material offers excellent fatigue resistance

A	B	C	F	G	S	part number	material	finish	weight
38.1	25.4	2	15.9	28.6	3.43	54-7-3006	polypropylene	white	5g
38.1	25.4	2	15.9	28.6	3.43	54-7-3008	polypropylene	black	5g
50.8	38.1	3.17	22.2	33.3	3.43	54-7-3003	polypropylene	white	5g
50.8	38.1	3.17	22.2	33.3	3.43	54-7-3005	polypropylene	black	5g





Hinges / Various hinges

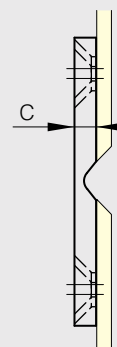
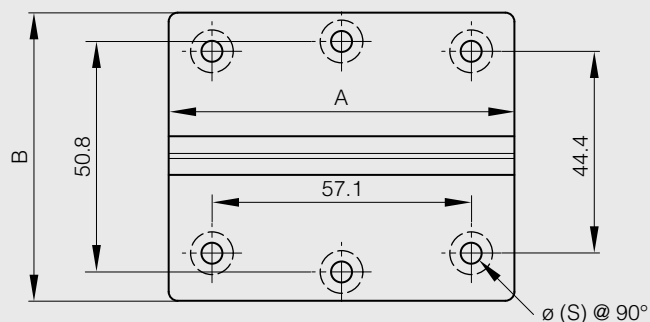
Plastic hinges

Technical features :

- Temperatures: -40°C up to +80°C
- Can be fixed with: rivets, screws, nails or clamps
- Chemical resistance: oil, solvents, sea water and most chemical agents
- Tensile resistance: 180N/cm
- Material offers excellent fatigue resistance



A	B	C	S	part number	material	finish	weight
76.2	63.5	4.76	4.62	54-7-3009	polypropylene	white	16g
76.2	63.5	4.76	4.62	54-7-3011	polypropylene	black	16g

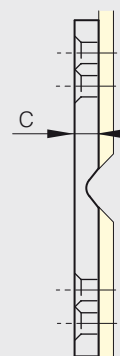
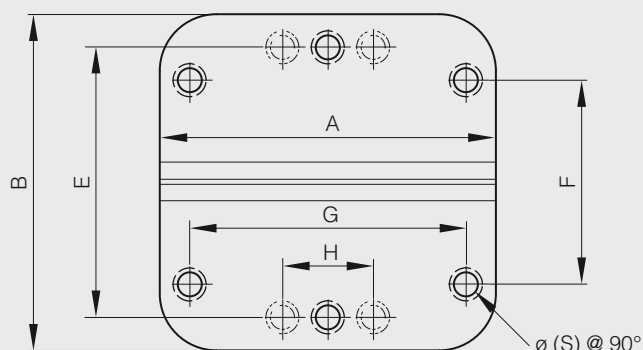


Technical features :

- Temperatures: -40°C up to +80°C
- Can be fixed with: rivets, screws, nails or clamps
- Chemical resistance: oil, solvents, sea water and most chemical agents
- Tensile resistance: 180N/cm
- Material offers excellent fatigue resistance



A	B	C	E	F	G	H	S	part number	material	finish	weight
88.9	88.9	6.35	71.4	54	73		6	54-7-3012	polypropylene	white	35g
88.9	88.9	6.35	71.4	54	73		6	54-7-3013	polypropylene	grey	35g
88.9	88.9	6.35	71.4	54	73		6	54-7-3014	polypropylene	black	35g
101.6	101.6	6.35	79.4	54	83.4	27.8	8	54-7-3015	polypropylene	white	50g
101.6	101.6	6.35	79.4	54	83.4	27.8	8	54-7-3016	polypropylene	grey	50g
101.6	101.6	6.35	79.4	54	83.4	27.8	8	54-7-3017	polypropylene	black	50g

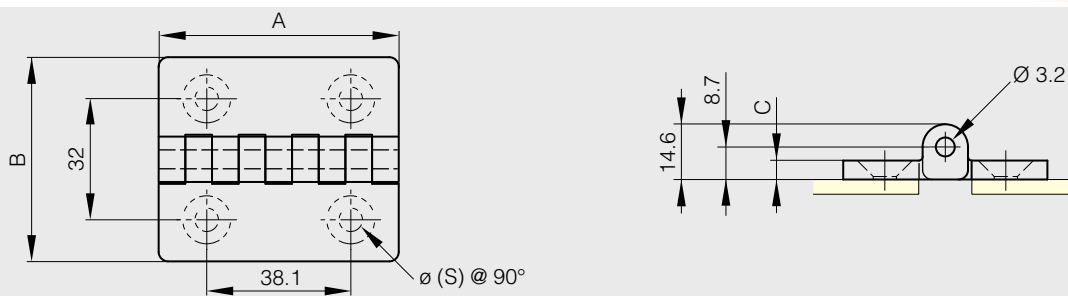




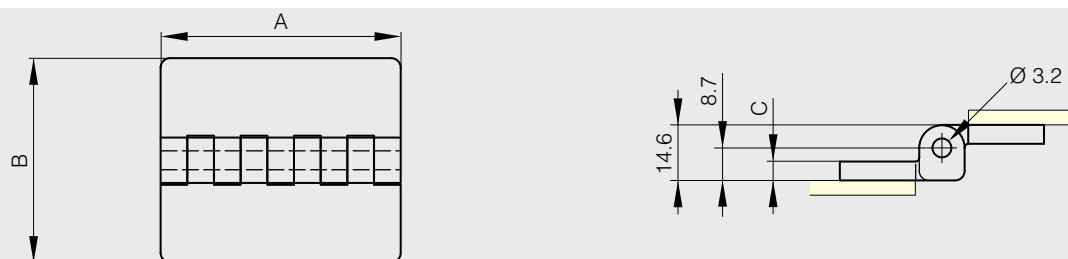
Hinges / Various hinges

Plastic hinges

A	B	C	S	part number	material	finish	weight
63.5	54	5		54-7-3018	polypropylene	white	20g
63.5	54	5		54-7-3019	polypropylene	black	20g
63.5	54	5		54-7-3021	pvc	grey	20g
63.5	54	5		54-7-3022	polycarbonate	transparent	20g
63.5	54	5	6.2	54-7-3028	polyethylene	natural	20g



A	B	C	part number	material	finish	weight
63.5	54	5	54-7-3023	polypropylene	white	20g
63.5	54	5	54-7-3024	polypropylene	black	20g
63.5	54	5	54-7-3026	pvc	grey	20g
63.5	54	5	54-7-3027	polycarbonate	transparent	20g





Lift-off hinges in plastic

Hinges are made of 15% GF polyamide, pins are in 303 stainless steel

A	B	C	D	S	note	part number	material	finish	weight
74	60	7	9.5	5	type 1 symmetric not shown	14-7-3722	polyamide	black	53g
74	60	7	9.5	5	type 2 as shown below	14-7-3723	polyamide	black	53g

