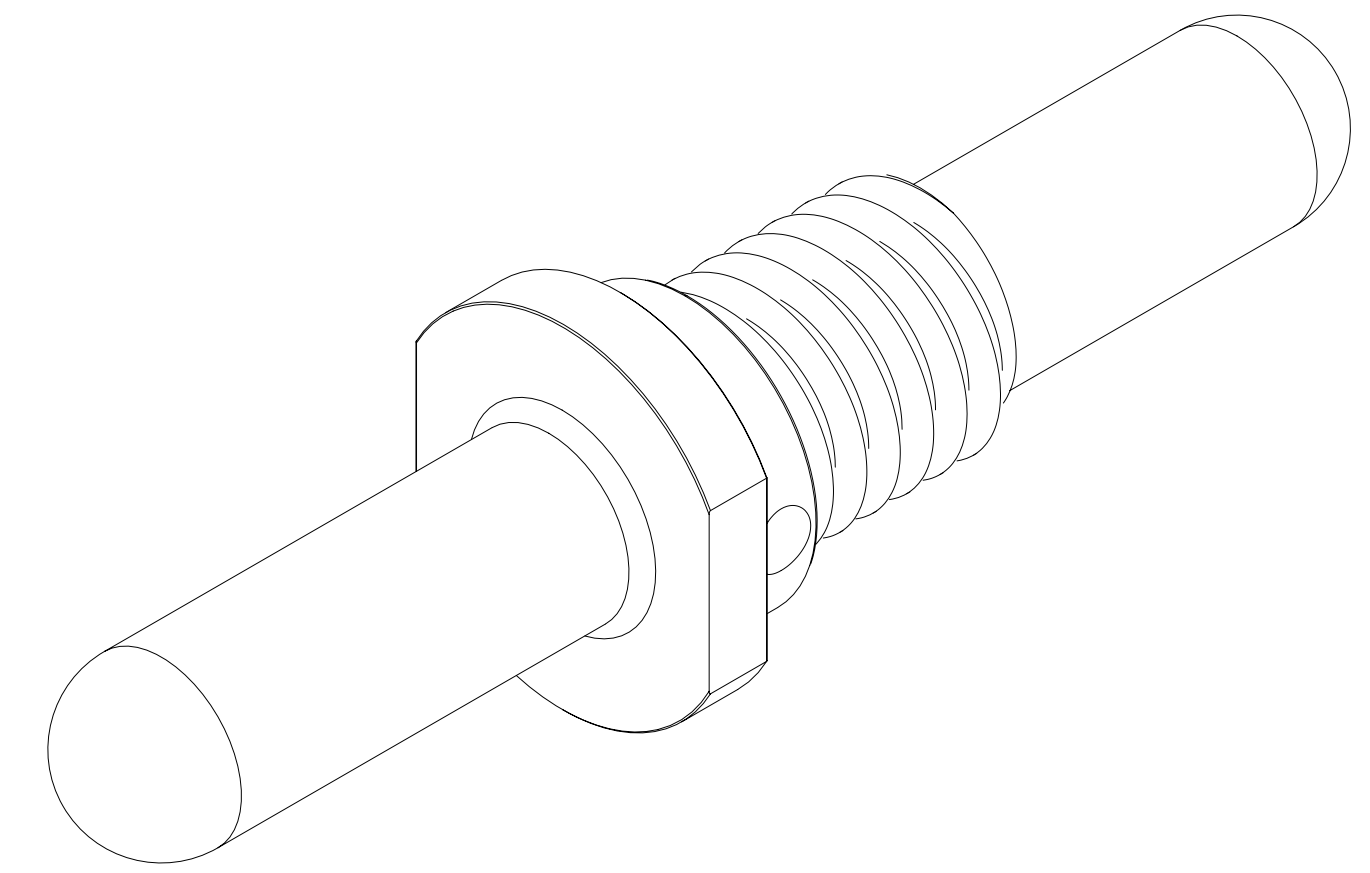
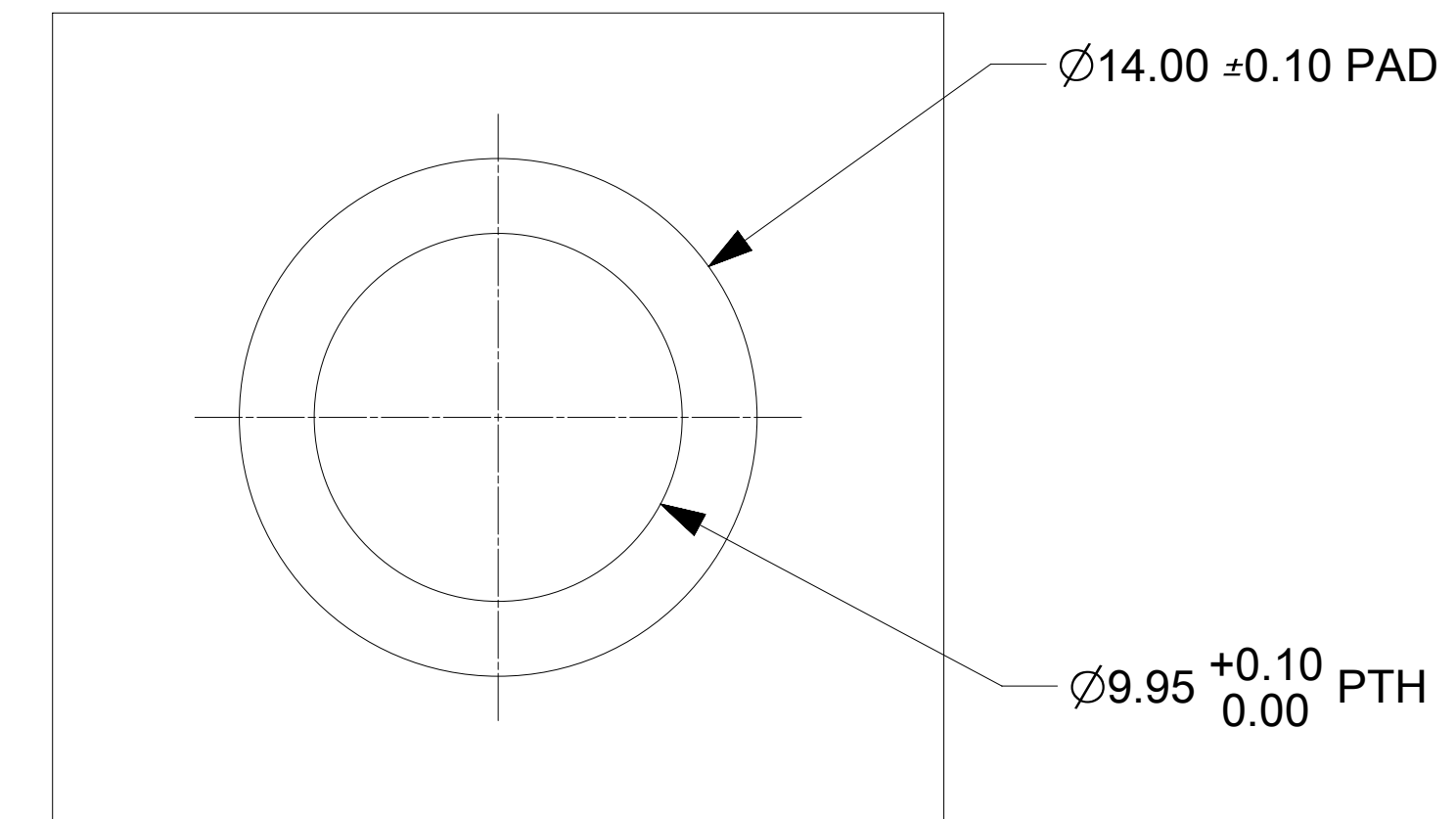
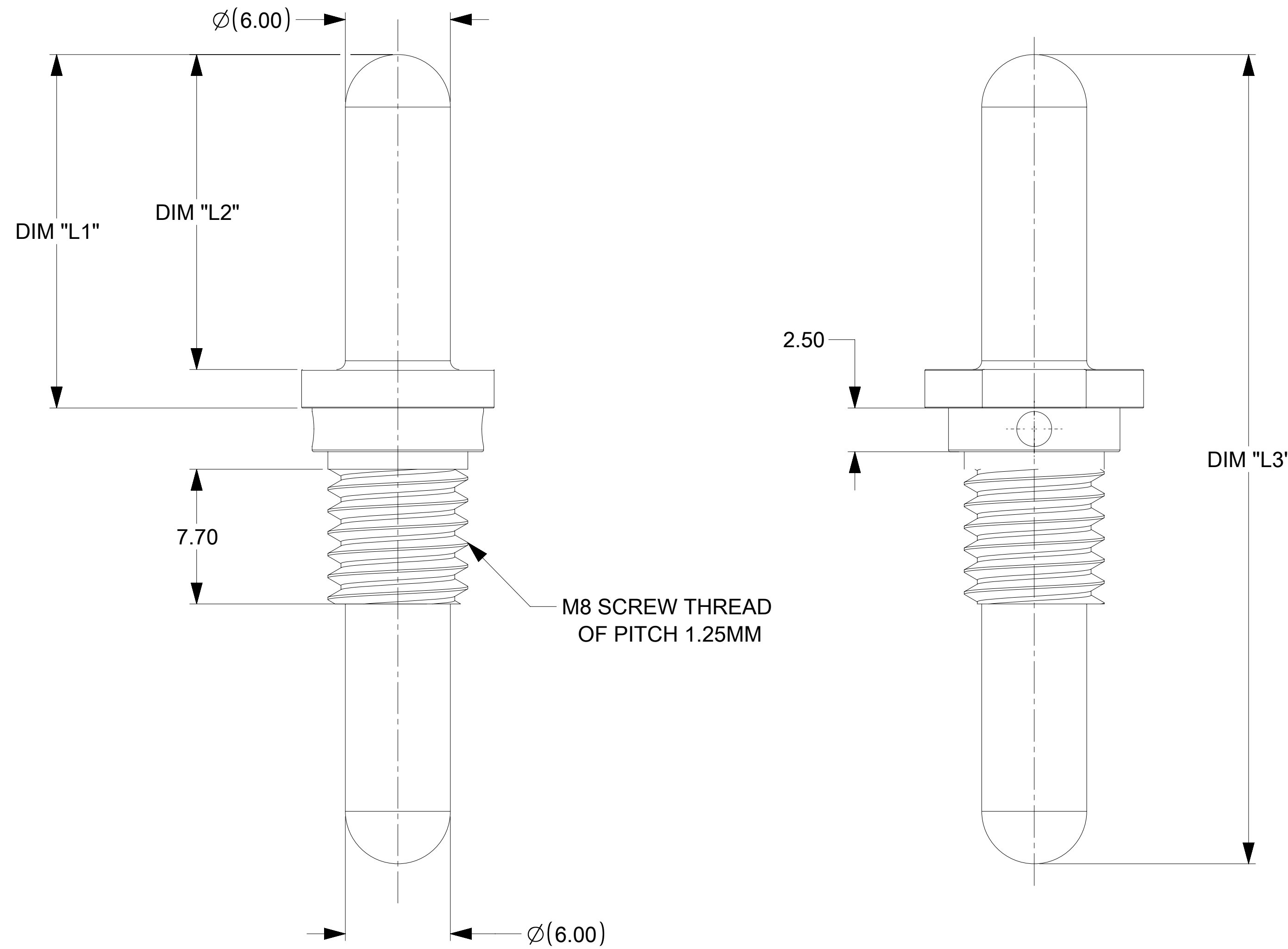


PART NUMBER	DIMENSION "L1"	DIMENSION "L2"	DIMENSION "L3"
2143370028	20.20	18.00	46.25
2143370042	23.20	21.00	52.25
2143370058	25.00	22.8	56.60



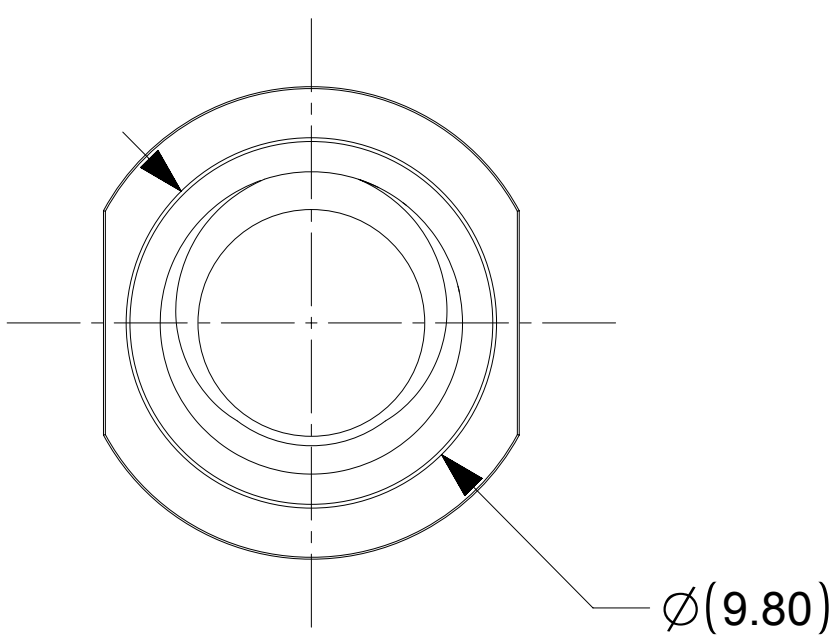
ISOMETRIC VIEW OF THE  
SENTRALITY 6.00MM SCREW THREADED INTERPOSER PIN



RECOMMENDED PCB OR BUSBAR LAYOUT

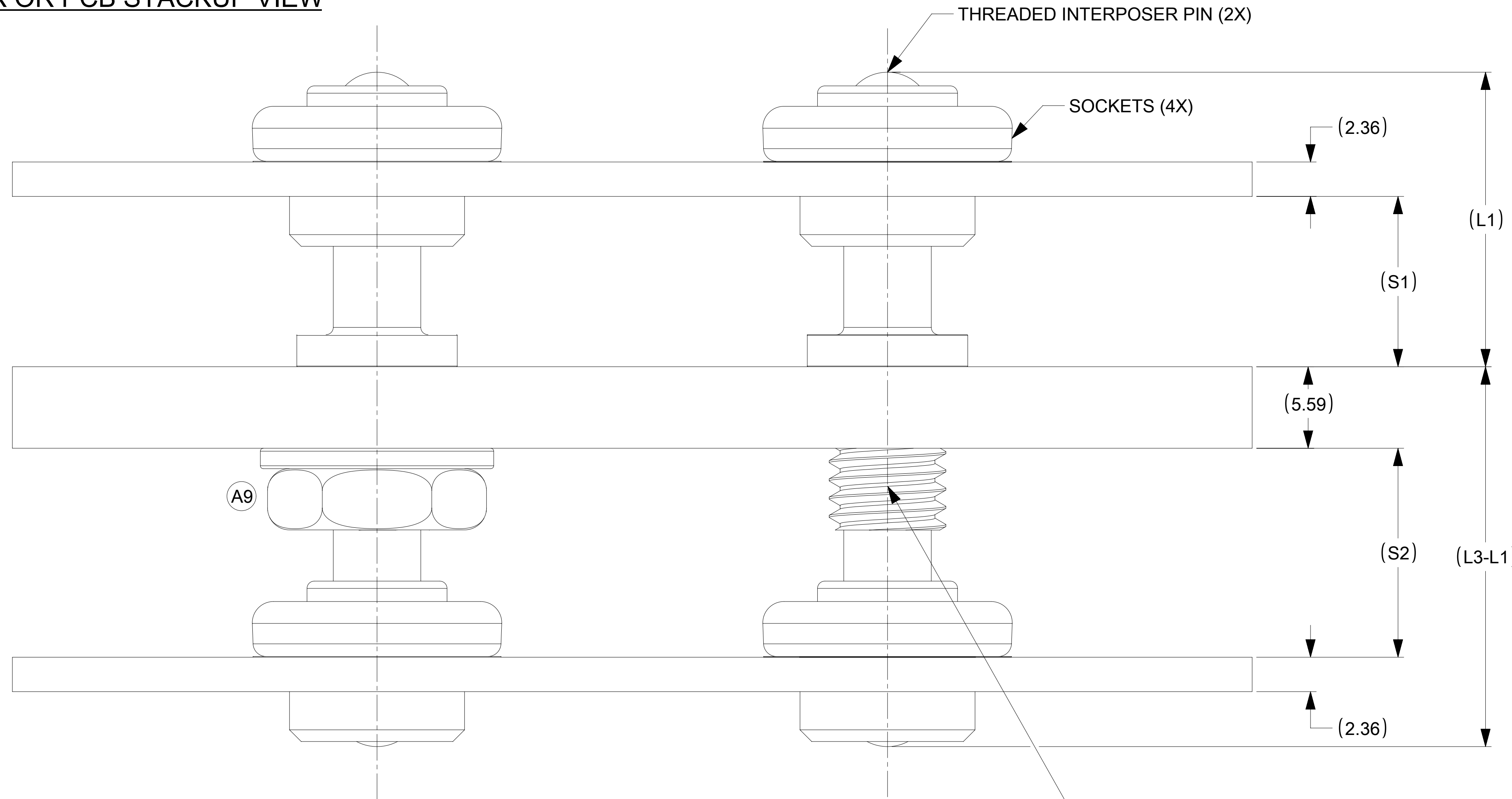
NOTES :

- MATERIAL:
  - BASE METAL : HIGH CONDUCTIVE COPPER ALLOY
  - PLATING ON BODY : 3.18 MICRON MIN SILVER OVER 1.27 MICRON MIN NICKEL
- PRODUCT SPECIFICATION: 2043130001-PS.
- APPLICATION SPECIFICATION: 2043130001-AS
- PARTS TO BE BULK PACKAGED AS PER PACKAGING SPECIFICATION: 2032630006-PK
- PIN WILL BE SUPPLIED TARNISH FREE BUT MAY TARNISH OVER TIME.



THIS DRAWING CONTAINS INFORMATION THAT IS PROPRIETARY TO MOLEX ELECTRONIC TECHNOLOGIES, LLC AND SHOULD NOT BE USED WITHOUT WRITTEN PERMISSION											
DIMENSION UNITS <b>mm</b>		SCALE <b>5:1</b>		CURRENT REV DESC: NUT & WASHER IS SHOWN IN STACKUP VIEW						<b>molex</b>	
GENERAL TOLERANCES (UNLESS SPECIFIED)				EC NO: 793537							
ANGULAR TOL ± 0.5°				4 PLACES ±		DRWN: CHETHH2		2024/07/29		SENTRALITY 6.0MM SCREW THREADED INTERPOSER PIN	
3 PLACES ±				CHK'D: SACHIK7		2024/07/29					
2 PLACES ± 0.15				APPR: HTHYAGARAJ		2024/08/19		PRODUCT CUSTOMER DRAWING			
1 PLACE ± 0.25				INITIAL REVISION:		DRWN: GJEEVANSURES		2021/07/08		DOCUMENT NUMBER	
0 PLACES ±				APPR: HTHYAGARAJ		2021/08/09		2143370028		DOC TYPE DOC PART REVISION	
DRAFT WHERE APPLICABLE MUST REMAIN WITHIN DIMENSIONS				THIRD ANGLE PROJECTION		DRAWING		SERIES		MATERIAL NUMBER CUSTOMER SHEET NUMBER	
						D-SIZE		214337		SEE TABLE GENERAL MARKET 1 OF 2	

**BUSBAR OR PCB STACKUP VIEW**



THE ABOVE STACK UP VIEW IS FOR P/N 2143370028 DIMENSIONS REFER THE TABLE FOR REMAINING P/N's DIMENSIONS  
 NUT & WASHER IS NOT SHOWN FOR ILLUSTRATION PURPOSE

PART NUMBER	DIMENSION "S1"	DIMENSION "S2"
2143370028	11.68	14.33
2143370042	14.68	17.33
2143370058	16.48	19.88

THIS DRAWING CONTAINS INFORMATION THAT IS PROPRIETARY TO MOLEX ELECTRONIC TECHNOLOGIES, LLC AND SHOULD NOT BE USED WITHOUT WRITTEN PERMISSION

DIMENSION UNITS	SCALE
mm	5:1
GENERAL TOLERANCES (UNLESS SPECIFIED)	
ANGULAR TOL	± 0.5°
4 PLACES	±
3 PLACES	±
2 PLACES	± 0.15
1 PLACE	± 0.25
0 PLACES	±
DRAFT WHERE APPLICABLE MUST REMAIN WITHIN DIMENSIONS	

CURRENT REV DESC: NUT & WASHER IS SHOWN IN STACKUP VIEW	
EC NO: 793537	
DRWN: CHETHH2	2024/07/29
CHK'D: SACHIK7	2024/07/29
APPR: HTHYAGARAJ	2024/08/19
INITIAL REVISION:	
DRWN: GJEEVANSURES	2021/07/08
APPR: HTHYAGARAJ	2021/08/09
THIRD ANGLE PROJECTION	DRAWING
SERIES	MATERIAL NUMBER
D-SIZE 214337	SEE TABLE

**molex**

SENTRALITY 6.0MM SCREW THREADED INTERPOSER PIN

PRODUCT CUSTOMER DRAWING

DOCUMENT NUMBER	DOC TYPE	DOC PART	REVISION
2143370028	PSD	000	A9
MATERIAL NUMBER	CUSTOMER	SHEET NUMBER	
SEE TABLE	GENERAL MARKET	2 OF 2	