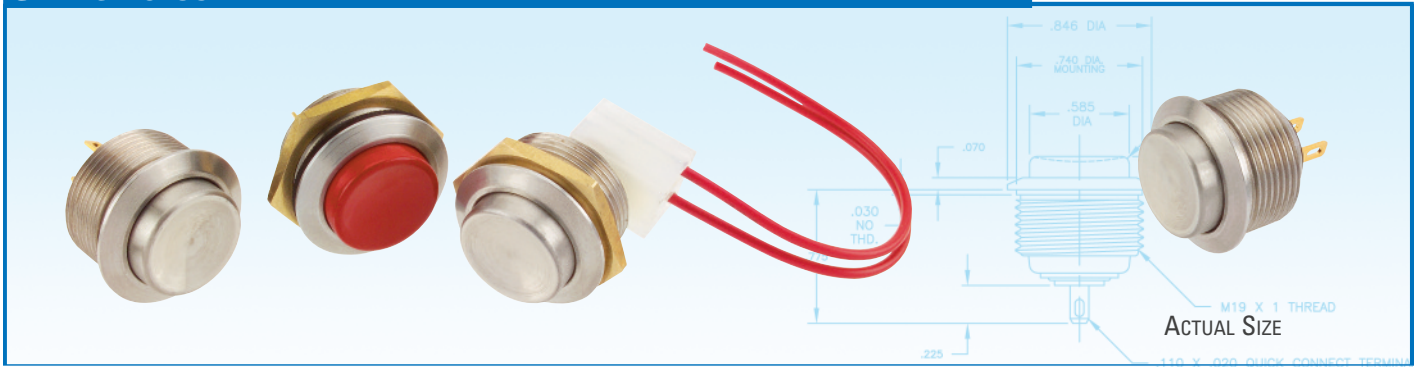


SERIES 76-59



Extra Tough Vandal Resistant Sealed Pushbutton Switch

The Series 76-59 is an extra tough, stainless steel sealed pushbutton. It is made to withstand rough use and the concave stainless button makes it ADA compatible. The switch is momentary action and the button is available in a stainless or red powder coated button.

KEY FEATURES:

- Sealed to IP67
- SPST-NO-DB
- Stainless steel body and button
- .110 quick connect terminals
- Standard ITW Pancon connector available
- Extra ruggedized construction
- ADA compatible

APPLICATIONS

- Security systems
- Kiosks
- Process control
- Public access equipment
- Gas pumps
- Outdoor machinery
- Industrial machinery

ORDERING INFORMATION:

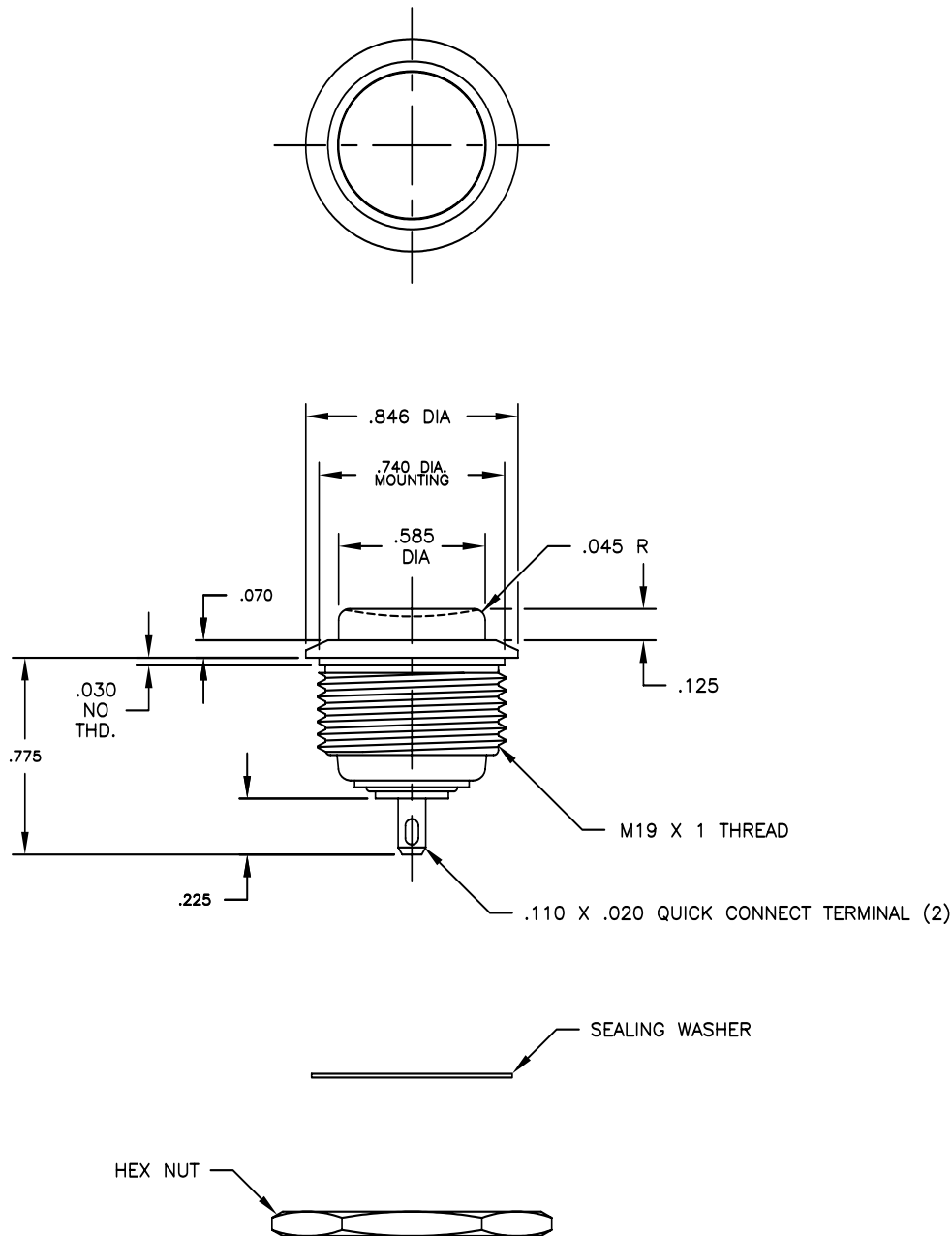
Part Number	Bushing	Button
76-59200	Stainless steel	Raised concave stainless steel
76-59300	Stainless steel	Raised concave brass with UV stabilized red powder coat finish

STANDARDS / AGENCY / RATINGS:



SERIES 76-59—EXTRA TOUGH SEALED PUSHBUTTON

76-59200 & 76-59300



MECHANICAL / ELECTRICAL CHARACTERISTICS:

Electrical rating:

100 mA max @ 50 VDC Res

Life (electrical):

500,000 cycles @ msx load

Operating force:

3.0 N ref

Operating temperature:

-55°C to +125°C

Bushing material:

stainless steel

Button material:

stainless steel (76-59200) or
brass with UV stabilized red
powder coat finish (76-59300)

Contacts & terminals:

gold plated brass

Recommended panel cutout:

.758 dia.

Recommended panel**thickness:**

.06-.31

ITW Switches

2550 Millbrook Drive

Buffalo Grove, IL 60089

800.544.3354

847.876.9400

847.876.9440 (Fax)

www.itwswitches.com

customer_service@itwswitches.com