

# CT 10-2/2-GS/3E - Magazine



2765408

<https://www.phoenixcontact.com/us/products/2765408>

Please be informed that the data shown in this PDF document is generated from our online catalog. Please find the complete data in the user documentation. Our general terms of use for downloads are valid.



Coarse protection card cage CT, for holding 10 three-electrode gas-filled surge arresters, unequipped. Version: 10 double conductors

## Your advantages

- Space-saving due to compact design
- Flexible fields of application with modular protective plug
- Can be used in LSA-PLUS disconnect and control strips or CT-TERMIBLOCK via adapted connection technology

## Commercial data

Item number	2765408
Packing unit	5 pc
Minimum order quantity	5 pc
Note	Made to order (non-returnable)
Sales key	NULL
Product key	CL3212
Catalog page	Page 192 (C-4-2019)
GTIN	4017918066307
Weight per piece (including packing)	49.45 g
Weight per piece (excluding packing)	48 g
Customs tariff number	85389099
Country of origin	DE

# CT 10-2/2-GS/3E - Magazine

2765408

<https://www.phoenixcontact.com/us/products/2765408>

## Technical data

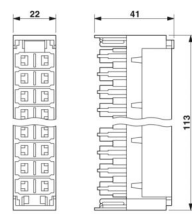
### Product properties

Product type	Plug magazine
Product family	COMTRAB
Type	LSA-PLUS module
Number of positions	20
Surge protection fault message	none
Arrester can be tested with CHECKMASTER from software version:	From SW rev. 1.00
Wire pairs per module	10

### Connection data

Connection method	can be plugged into COMTRAB-TERMIBLOCK and LSA-PLUS disconnect and switching strips
-------------------	---

### Dimensions

Dimensional drawing	
Width	113.3 mm
Height	22.5 mm
Depth	41.35 mm

### Material specifications

Color	white (RAL 9010)
-------	------------------

### Mechanical properties

#### Mechanical data

Open side panel	No
-----------------	----

### Protective circuit

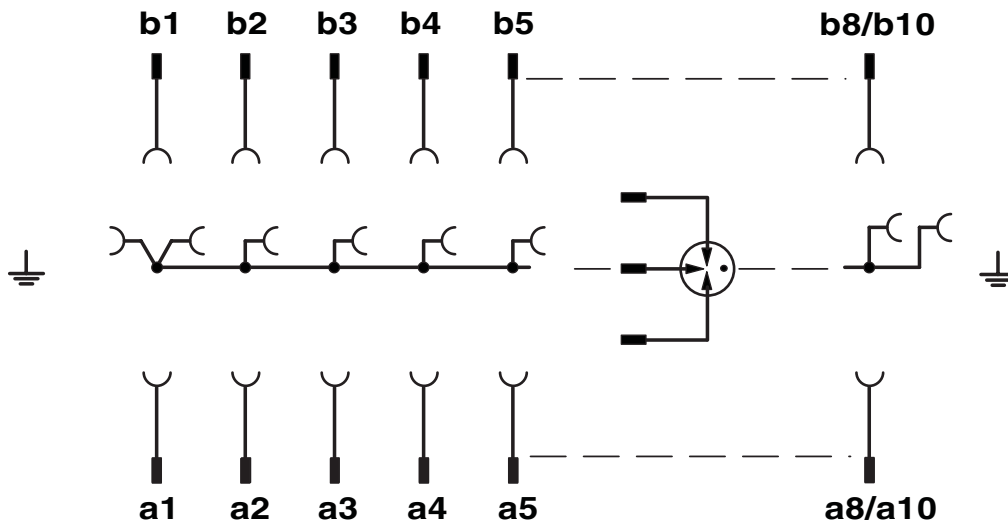
Direction of action	Line-Line & Line-Earth Ground
Surge protection fault message	none

### Mounting

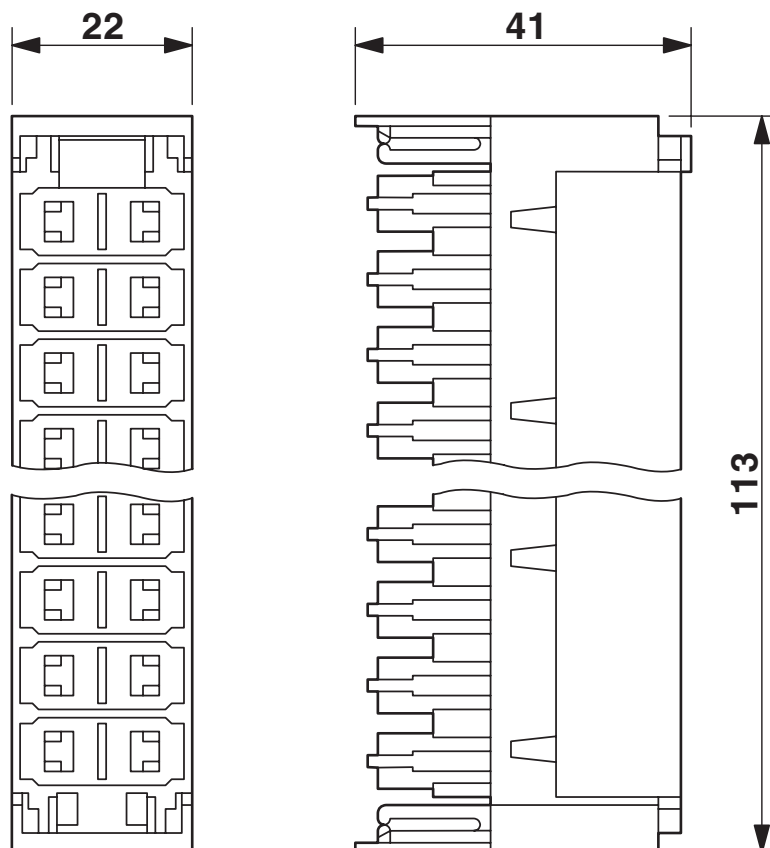
Mounting type	On CT-TERMIBLOCK and LSA-PLUS disconnect strip
---------------	--

## Drawings

Circuit diagram



Dimensional drawing



# CT 10-2/2-GS/3E - Magazine



2765408

<https://www.phoenixcontact.com/us/products/2765408>

## Approvals

To download certificates, visit the product detail page: <https://www.phoenixcontact.com/us/products/2765408>



**EAC**

Approval ID: RU C-DE.\*09.B.00169

2765408

<https://www.phoenixcontact.com/us/products/2765408>

## Classifications

### ECLASS

ECLASS-11.0	27130803
ECLASS-13.0	27171503

### ETIM

ETIM 9.0	EC001466
----------	----------

### UNSPSC

UNSPSC 21.0	39121600
-------------	----------

## Environmental product compliance

### EU RoHS

Fulfills EU RoHS substance requirements	Yes, No exemptions
---	--------------------

### China RoHS

Environment friendly use period (EFUP)	EFUP-E
	No hazardous substances above the limits

### EU REACH SVHC

REACH candidate substance (CAS No.)	No substance above 0.1 wt%
-------------------------------------	----------------------------

2765408

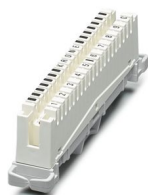
<https://www.phoenixcontact.com/us/products/2765408>

## Mandatory accessories

### CT 10-TL - Disconnect strip

2765356

<https://www.phoenixcontact.com/us/products/2765356>



LSA-PLUS disconnect strip to hold the CTM and CT 10 protection modules.  
Version: 10 double conductors, dimension A: 124 mm.

---

### SVP 3E-110AC - Gas discharge tube

2765521

<https://www.phoenixcontact.com/us/products/2765521>



3-electrode gas-filled surge arrester, nominal voltage: 110 V AC

---

## Accessories

2765408

<https://www.phoenixcontact.com/us/products/2765408>

## SSA 3-6 - Shield connection

2839295

<https://www.phoenixcontact.com/us/products/2839295>

Shield fast connection for 3 ... 6 mm cable diameter. Potential connecting cable:  
200 mm, 1 mm<sup>2</sup>, color: black



---

## SSA 5-10 - Shield connection

2839512

<https://www.phoenixcontact.com/us/products/2839512>

Shield fast connection for 5 ... 10 mm cable diameter. Potential connecting cable:  
200 mm, 1 mm<sup>2</sup>, color: black



---

Phoenix Contact 2024 © - all rights reserved  
<https://www.phoenixcontact.com>

Phoenix Contact USA  
586 Fulling Mill Road  
Middletown, PA 17057, United States  
(+717) 944-1300  
[info@phoenixcon.com](mailto:info@phoenixcon.com)