

ZONE	REV	SCR NUMBER	DESCRIPTION	BY	DATE	APPROVED
ALL	A	MREO-7LKHXY.VERXX	RELEASE TO PRODUCTION	M.RECEPUTO	12/22/2008	D.SMITH

**DOUBLE POLARIZING BACKPLANE MODULE
ASSEMBLY PART NUMBER ASSIGNMENT**
347 - X 3 XX - X X X

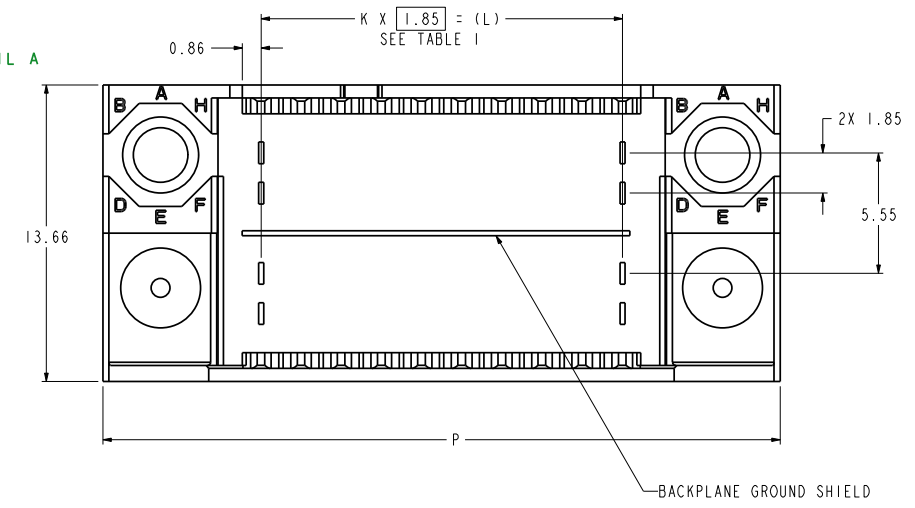
LOAD
5 = STANDARD LOADED
7 = CUSTOM LOADED
8 = CUSTOM LEAD FREE

NUMBER OF COLUMNS
05 = 5 COLUMN MODULE (NOT TOOLED)
10 = 10 COLUMN MODULE (NOT TOOLED)
25 = 25 COLUMN MODULE (NOT TOOLED)
45 = 45 COLUMN MODULE (NOT TOOLED)

MINIMUM PIN WIPE LENGTH, SEE DETAIL A
3 = 1.00 mm WIPE
4 = 2.00 mm WIPE
5 = 3.00 mm WIPE

PLATING CODE
0 = 735
1 = 732
2 = 769
3 = 768

POL PIN LOCATION
SEE TABLE II



DRAFT COPY
NOT FOR PRODUCTION USE

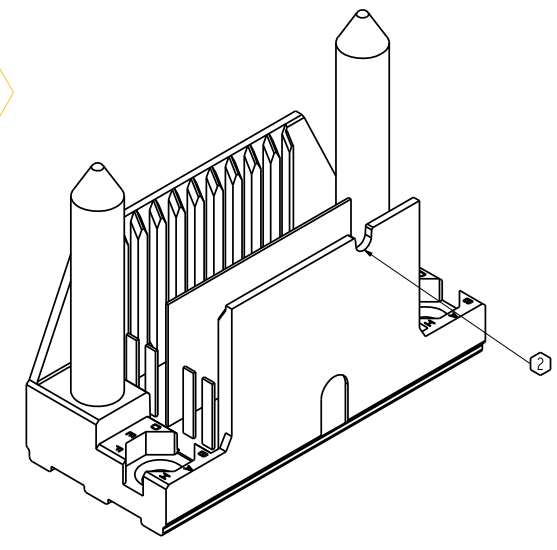
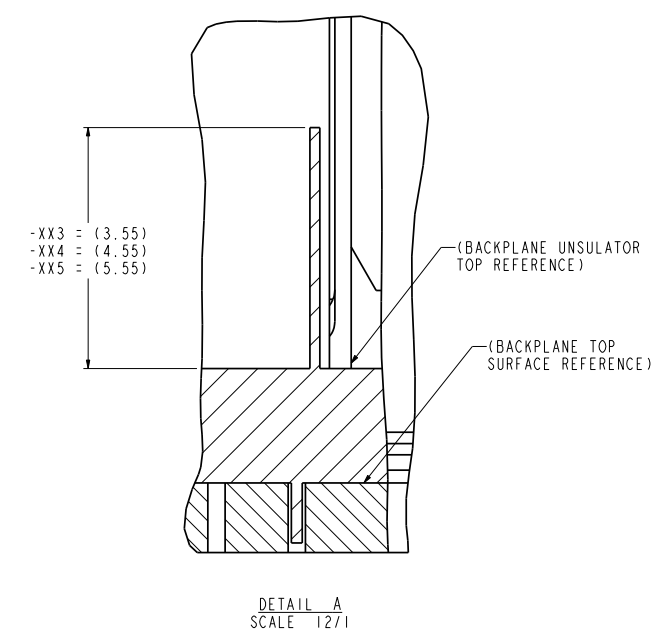
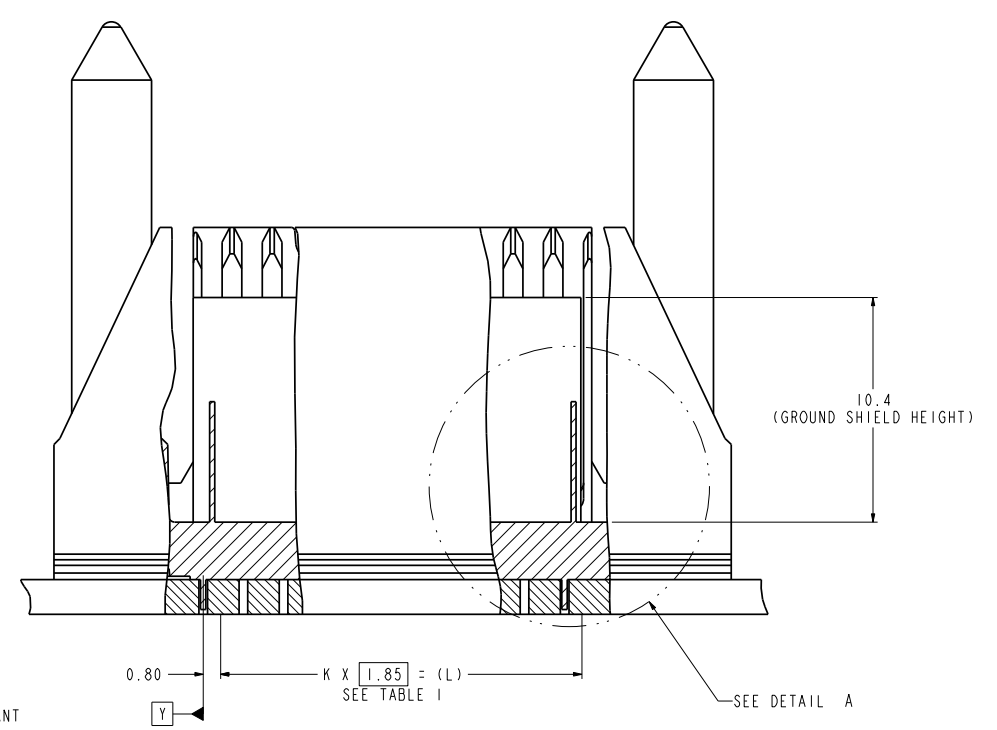
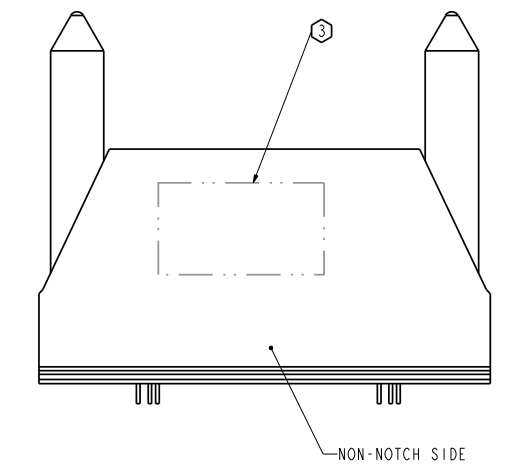


TABLE I

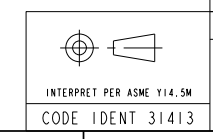
ASSEMBLY PART NUMBER	REV	K	(L)	P	TOTAL NUMBER OF DIFFERENTIAL PAIRS	
347-5305-OXX	A	4	(7.40)	21.95	10	NOT TOOLED
347-5310-OXX	A	9	(16.65)	31.20	20	NOT TOOLED
347-5325-OXX	A	24	(44.40)	58.95	50	NOT TOOLED
347-5345-OXX	A	44	(81.40)	95.95	90	

TABLE II

PART NUMBER 347-53XX-(XXX)	-OXX	-AXX	-BXX	-CXX	-DXX	-EXX	-FXX	-GXX	-HXX
POLARIZING PIN ORIENTATION									



- ① IF THE 4TH DIGIT OF THE PART NUMBER IS A 7 OR 8, INDICATING A CUSTOM PART, DIGITS 5 THROUGH 10 ARE NOT SIGNIFICANT AND DO NOT FOLLOW THE PARADIGM IN THE TABLE.
6. USE MATING GAUGE PART NUMBER 699-1085-000 AFTER INSERTION ONTO BOARD TO CHECK POSITION OF BLADES.
5. FOR REPAIR PROCEDURE FOR SIGNAL BLADE, SEE TB-2099.
- ④ PLATING OF SIGNAL CONTACT AND SHIELD CONTACTS IS DETERMINED BY PLATING CODE:
0 = 735 PER EGS-205 (30 MICROINCH GOLD PLATING ON MATING SURFACES).
1 = 732 PER EGS-205 (50 MICROINCH GOLD PLATING ON MATING SURFACES).
2 = 769 PER EGS-205 (30 MICROINCH GOLD PLATING ON MATING SURFACES, LEAD FREE).
3 = 768 PER EGS-205 (50 MICROINCH GOLD PLATING ON MATING SURFACES, LEAD FREE).
- ③ PART MARKING AS FOLLOWS:
LINE 1: "ATCS" AND DATECODE (ATCS YYWW).
LINE 2: MODULE PART NUMBER (###-###-###).
LINE 3: WORK ORDER NUMBER (###-#####), WHERE "*" DENOTES MANUFACTURING LOCATION.
- ② NOTCH DESIGNATES "ROW A" SIDE OF SHROUD. NOTCH FEATURE ON OPPOSITE SIDE FROM PART MARKING.
1. REFER TO TB-2085 FOR GBX PRODUCT SPECIFICATIONS.
- NOTES:



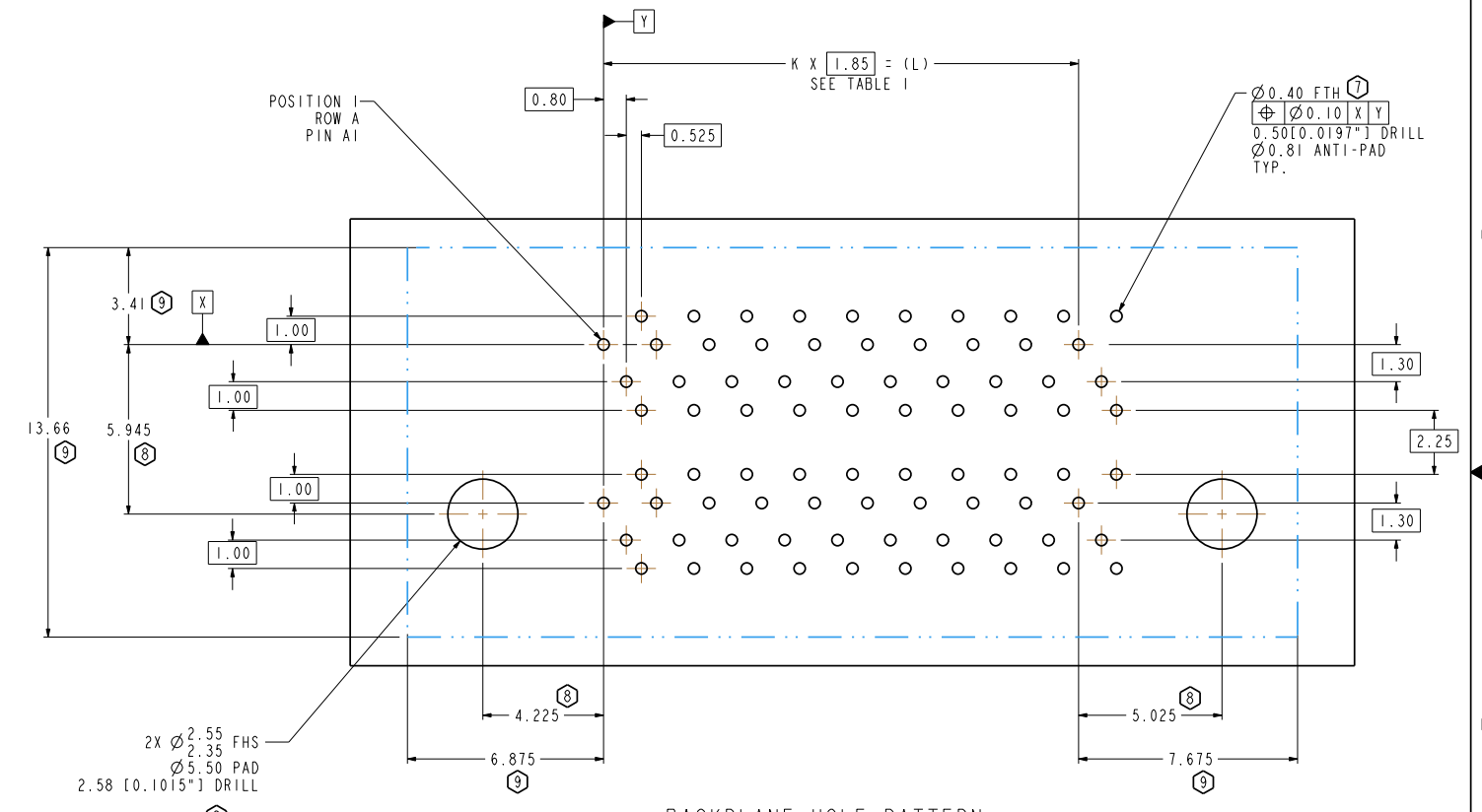
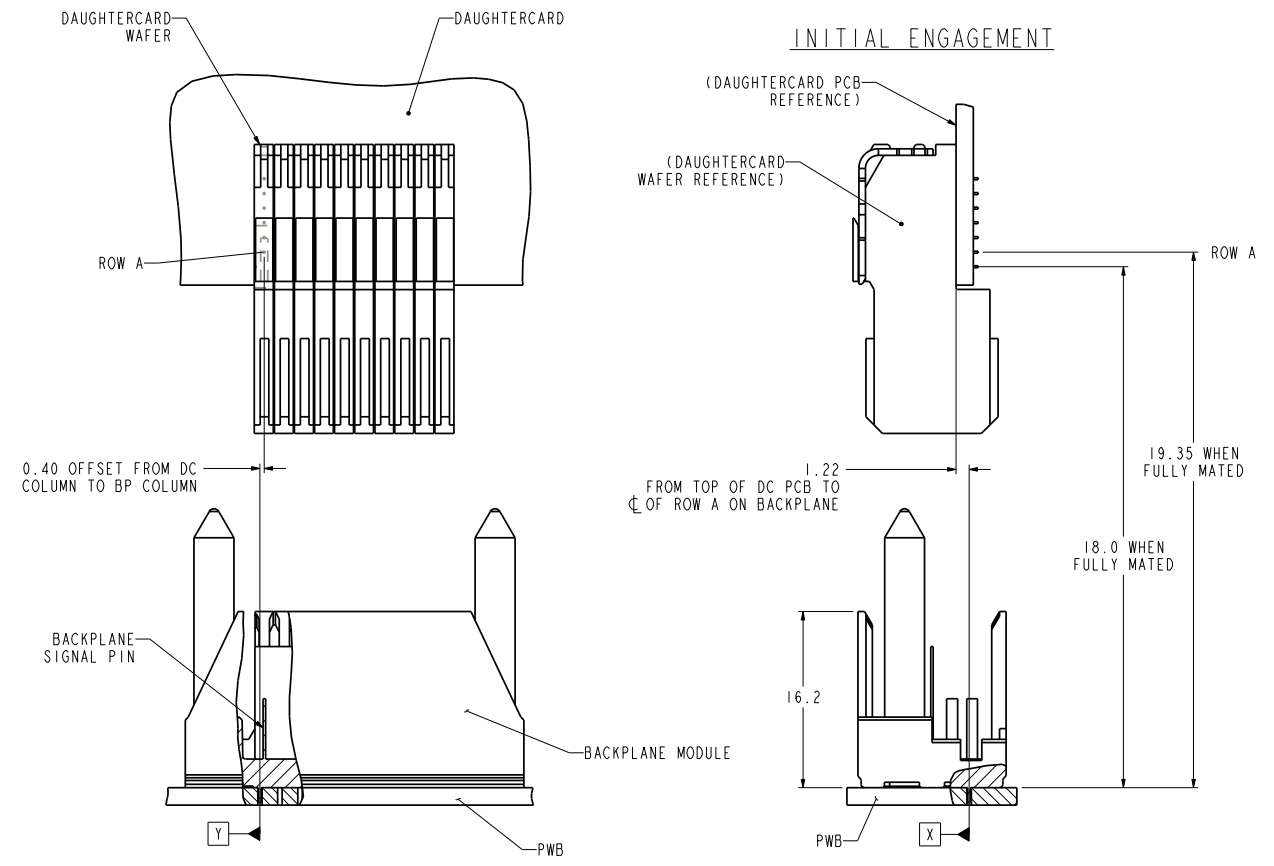
TOLERANCES	DESIGN	DATE	BY	TITLE
0.0 ±0.25	05/20/2008	05/20/2008	M. RECEPUTO	Amphenol TCS A Division of Amphenol Corporation 200 Innovative Way, Nashua, NH 03063 603.875.2000
0.00 ±0.13	05/22/2008	05/22/2008	M. RECEPUTO	
0.000 ± -	05/22/2008	05/22/2008	J. DUNHAM	
ANGLES ± -	05/22/2008	05/22/2008	J. DUNHAM	
UNLESS OTHERWISE SPECIFIED DIMENSIONS ARE IN MM, DECIMAL MAKER IS PERIOD.				
CUSTOMER USE DRAWING		PART NO. SEE TABLE I DRAWING NO. C-347-5310-500 ProE ASSEM 01118-347-5345-500 01118-347-5310-DBL-POL-SHRD.drw		
SIZE D	SCALE 4/1	SHEET 1 OF 2		REV A

DRW NO. C-347-5310-500

ZONE	REV	SCR NUMBER	DESCRIPTION	BY	DATE	APPROVED
N/A	N/A	N/A	SEE SHT 1 FOR REV HISTORY	N/A	N/A	N/A

DRW NO. C-347-5310-500 SH 2 REV A

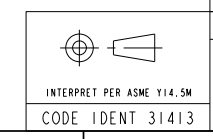
DRAFT COPY
NOT FOR PRODUCTION USE



BACKPLANE HOLE PATTERN
COMPONENT SIDE
SCALE 8/1

GbXe DC WAFER TO GbX-U BP SHROUD

- NOTES:
- (9) SEE DOCUMENT 190-0006-000 FOR KEEPOUT ZONES.
 - (8) OPTIONAL HOLE LOCATION FOR GROUNDED PIN OR ADDITIONAL GUIDE PIN SUPPORT. FOR DC BOARD WEIGHT > 8 LBS., REFER TO TB-2104 FOR PROPER GUIDE PIN SIZING.
 - (7) STATED PAD SIZE MAY REQUIRE FILLETING. FOR DETAILED ROUTING GUIDELINES, SEE TB-2090.



TOLERANCES	DESIGN 05/20/2008 M. RECEPUTO	Amphenol TCS A Division of Amphenol Corporation 200 Innovative Way, Nashua, NH 03063 603.875.2000
0.0 ±0.25	DRAWN 05/22/2008 M. RECEPUTO	
0.00 ±0.13	CHK 05/22/2008 J. DUNHAM	TITLE BP CONNECTOR ASSY, DOUBLE POLARIZING GBX U-SERIES, 2 PAIR
0.000 ± -	APVD 05/22/2008 J. DUNHAM	PART NO. SEE TABLE I
ANGLES ± -		REV
UNLESS OTHERWISE SPECIFIED DIMENSIONS ARE IN MM, DECIMAL MAKER IS PERIOD.		DRAWING NO. C-347-5310-500
CUSTOMER USE DRAWING		REV A
		ProE ASSEM 01118-347-5345-500 1.2
		01118-347-5310-DBL-POL-SHRD .drw 1.6
SIZE D	SCALE 4/1	SHEET 2 OF 2

DRW NO. C-347-5310-500

SH 2 REV A