

- 1 2-4 µm Ni
- 2 2-4 µm Sn OVER 1.25 µm MIN. Ni OVER 5.08 µm MIN. Cu
2-4 µm Sn ueber min. 1.25 µm Ni ueber min. 5.08 µm Cu)
- 3 ZONE I: 0.8 µm MIN. Au OVER 1.3 µm MIN. Ni
ZONE II: 2-4 µm Sn OVER 0.1 µm MIN. Ni
ZONE III: 0.1µm MIN. Ni
Zone I: min. 0.8 µm Au ueber min. 1.3 µm Ni
Zone II: 2-4 µm Sn ueber min. 0.1 µm Ni
Zone III: min. 0.1 µm Ni
- 4 PRETINNED (1-3 µm Sn)
Vorverzinkt (1-3 µm Sn)

5. THE CONNECTOR MUST FULFILL THE DIMENSIONAL REQUIREMENTS OF DIN 72594-1, RELEASED MARCH 2006. AND THE MECHANICAL AND ELECTRICAL REQUIREMENTS OF USCAR 17 REV. 2. Der Kuppler muss die dimensionellen Anforderungen nach DIN 72594-1, Ausgabe Maerz 2006, und die elektrischen und mechanischen Anforderungen nach SAE/USCAR 17 rev. 2 erfullen.

6 COMPONENTS MUST BE PURCHASED SEPARATELY. Komponenten sind separat zu bestellen.

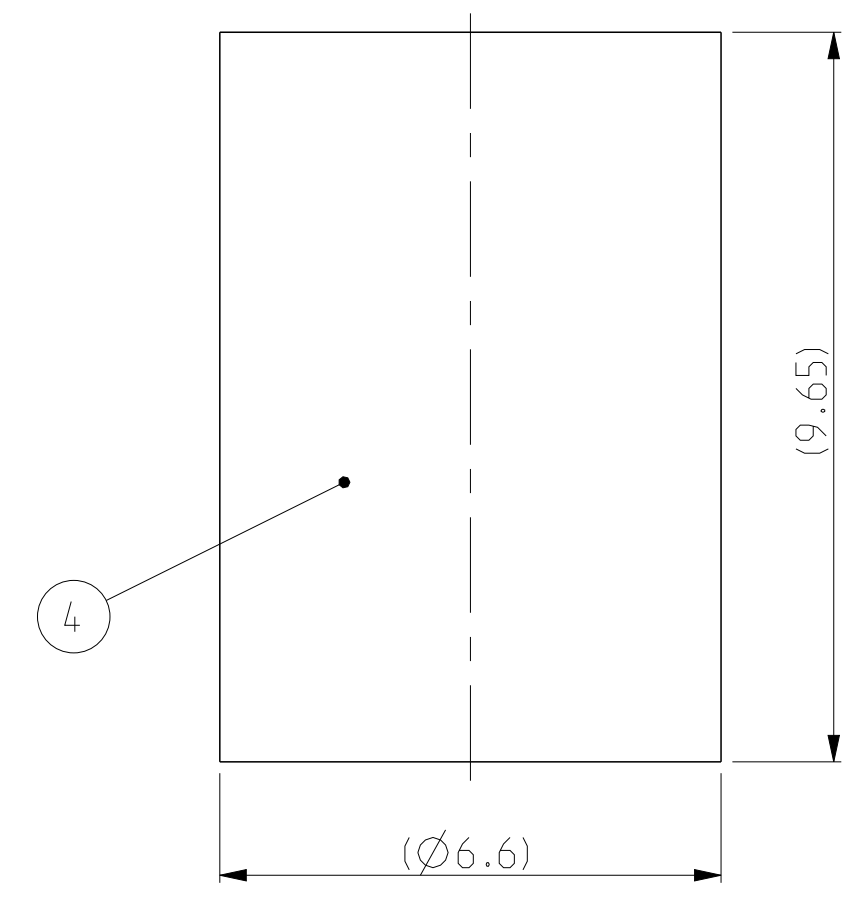
7 CRIMP TO BE MEASURED AT THIS POINT SEE APPLICATION SPECIFICATION. Crimp an diesem Punkt zu Messen Ausfuehrung siehe Verarbeitungsspezifikation.

8 WELDING POINT Schweißpunkt

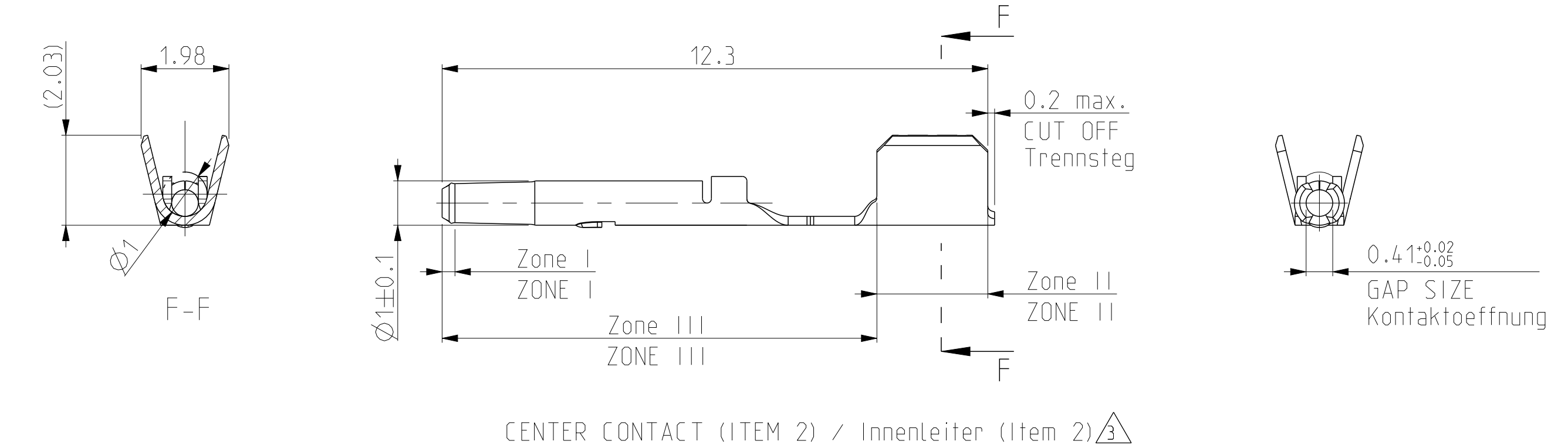
9. CHARACTERS ON THE PARTS STAND FOR THE REVISION OF THAT COMPONENT. NOT OF THE SUBASSEMBLY OR ASSEMBLY. Die Buchstaben auf den Teilen stehen fuer die Revision der entsprechende Komponente, nicht des Subassembly oder Assembly.

10. PACKAGING: ITEM 1, 3, 4 - LOOSE PIECES IN PLASTIC BAG AND BOX. ITEM 2 ON REEL IN BOX
 Verpackung: Pos. 1, 3, 4 - Schüttgut im Beutel und Karton, Pos. 2 - Spule im Karton

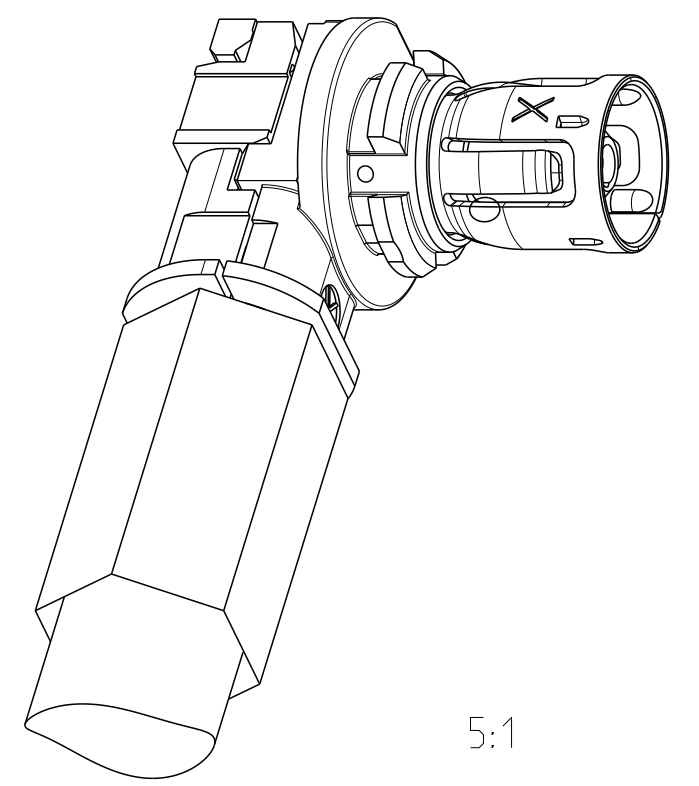
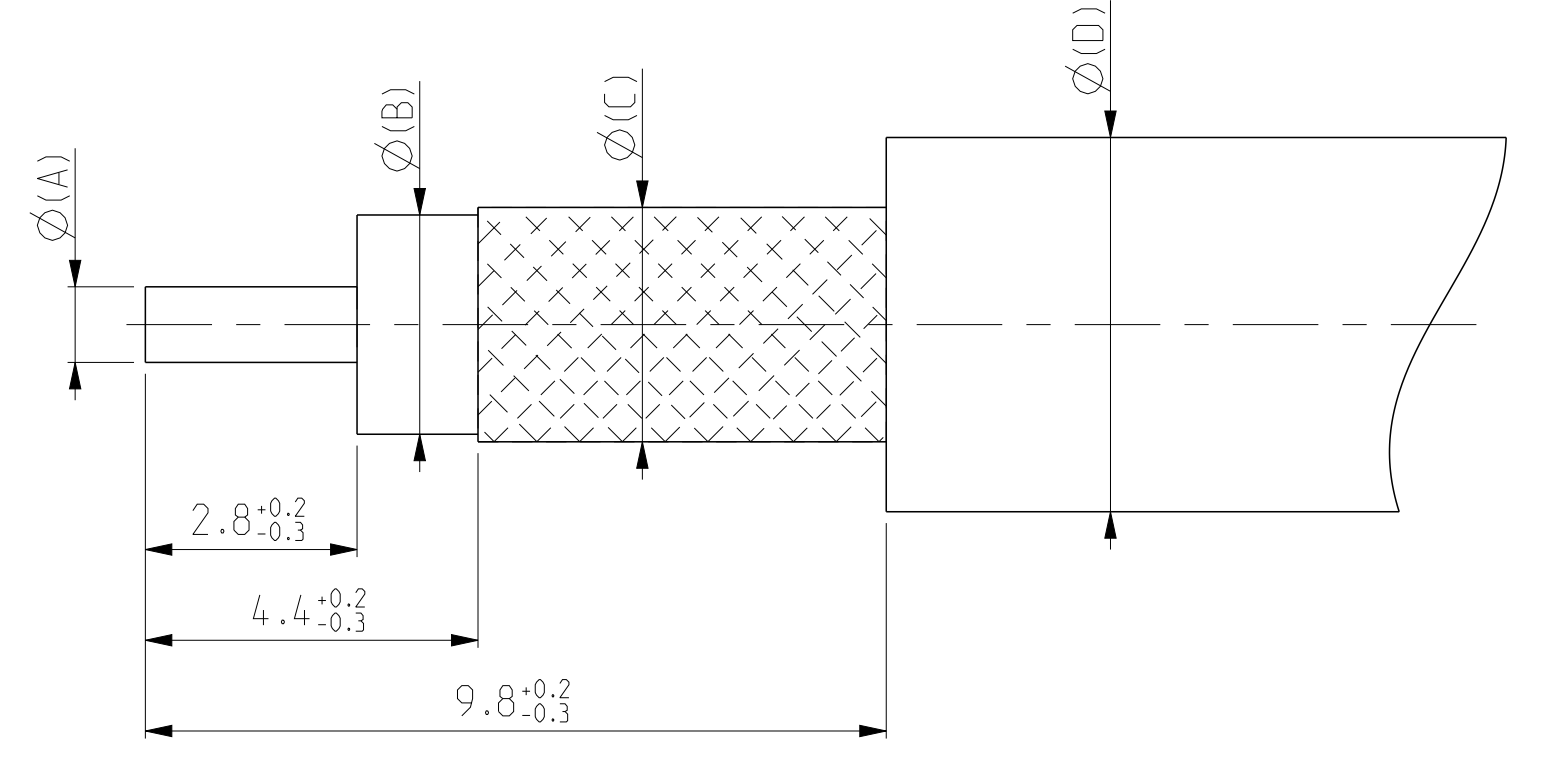
11. NOTE WAS REMOVED



FERRULE (ITEM 4)



CABLE TYPES Kabeltypen	Ø"A"	Ø"B"	Ø"C"	Ø"D"
AMC 4.0 (TE-P/N 1557701-1)	Ø0.9 nom.	Ø2.3 nom.	Ø2.7 nom.	Ø4.0 nom.



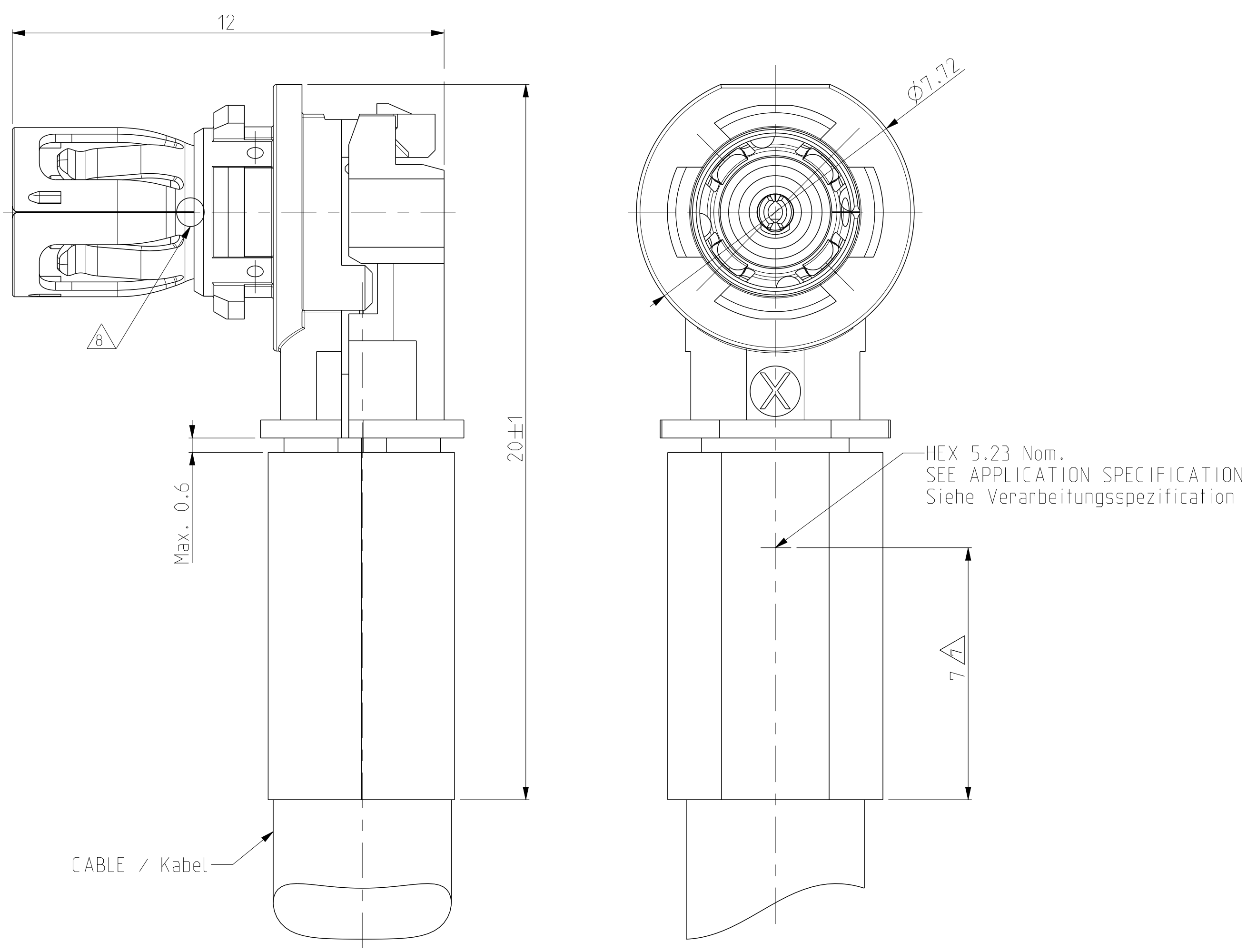
CABLE	CONTACT KIT	PART NO. TO BE ORDERED	ITEM NO	DESCRIPTION	MATERIAL	PLATING
1557701-1 (AMC 4.0)	2141946-1	1488499-3	4	FERRULE Crimphuelse	SFCu	1
		2141945-1	3	REAR SHELL SUBASSY Hinterschale (Deckel)	3a. PBT 3b. Zn-Leg. Zn-ALLOY	2
		2141947-1	2	CENTER CONTACT Innenleiterkontakt	CuNiSi	3
		2141944-1	1	FRONT SHELL SUBASSY Subassembly	1a. CuNiSi 1b. PEHD 1c. Zn-Leg. Zn-ALLOY	4 2

THIS DRAWING IS A CONTROLLED DOCUMENT. DIMENSIONING AND TOLERANCING PER GPS (ISO STANDARDS)

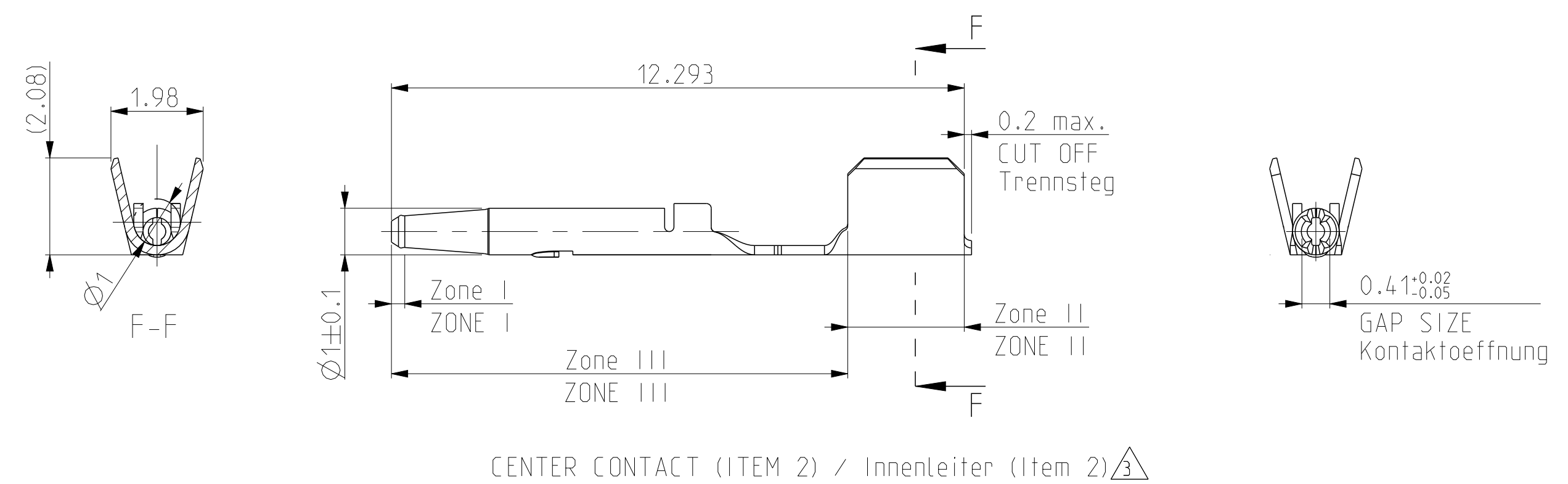
DIMENSIONS:	TOLERANCES UNLESS OTHERWISE SPECIFIED:	DATE	01DEC2010
mm	ISO 2768-HE	CHK	V. Cech
0 PLC	±	10JAN2011	S. Ryska
1 PLC	±0.2	APVD	T. Konecny
2 PLC	±0.1	PRODUCT SPEC	12JAN2011
3 PLC	±	APPLICATION SPEC	
4 PLC	±		
ANGLES	±		
MATERIAL	FINISH	WEIGHT	2.435g
SEE TABLE	SEE TABLE	CUSTOMER DRAWING	

NAME: Contact Kit, Plug, Unassembled
 HF FAKRA 90 DEG. FIX VERSION
 RG58LL, AMC 4.0

SCALE: 10:1 SHEET: 1 OF 3 REV: A4

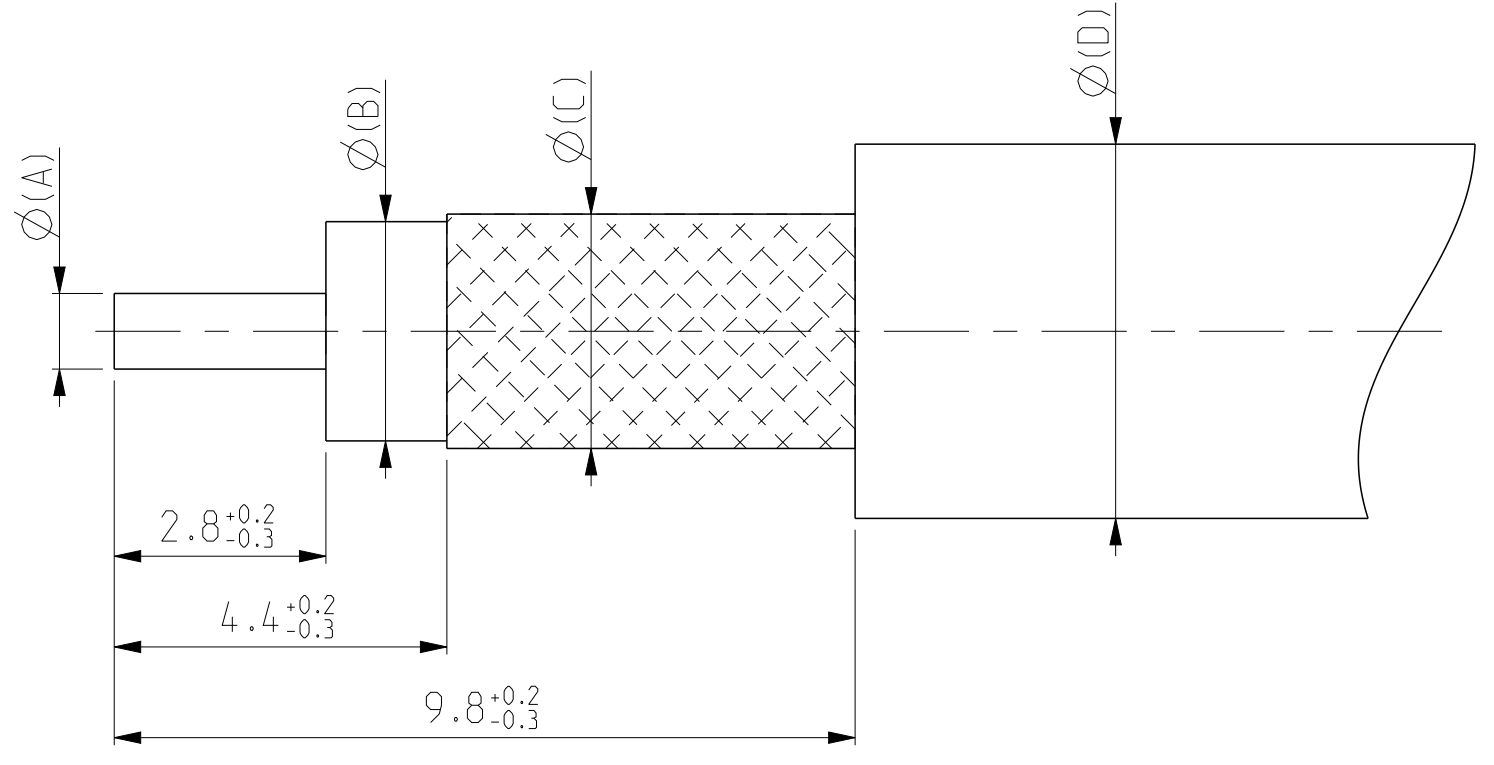


ASSEMBLED VIEWS / Assembled Views

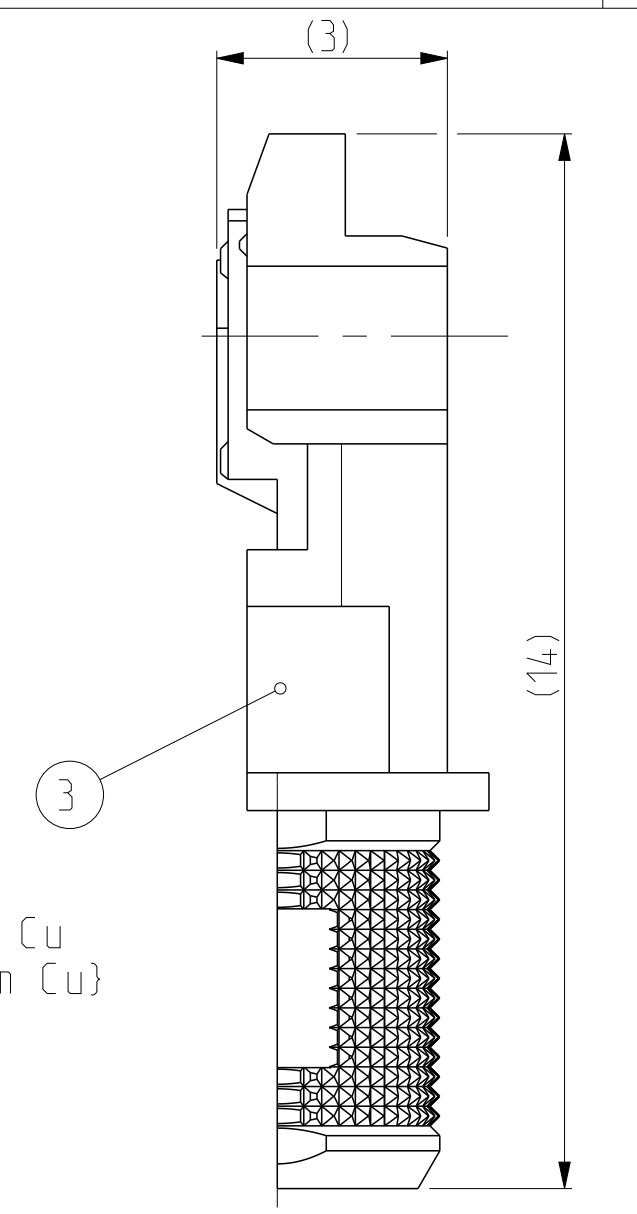
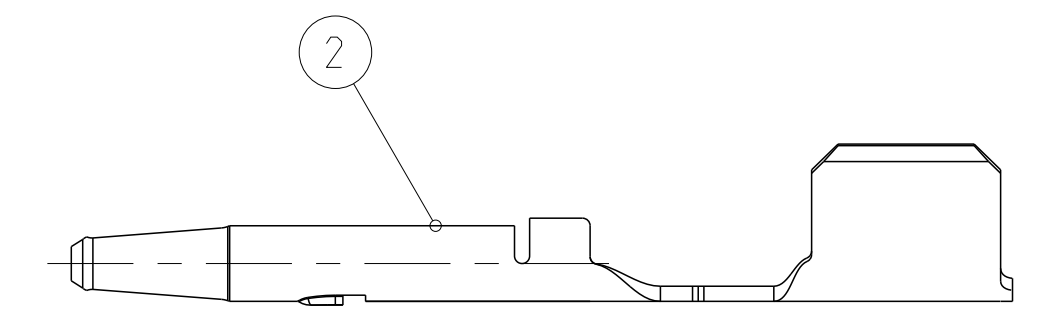
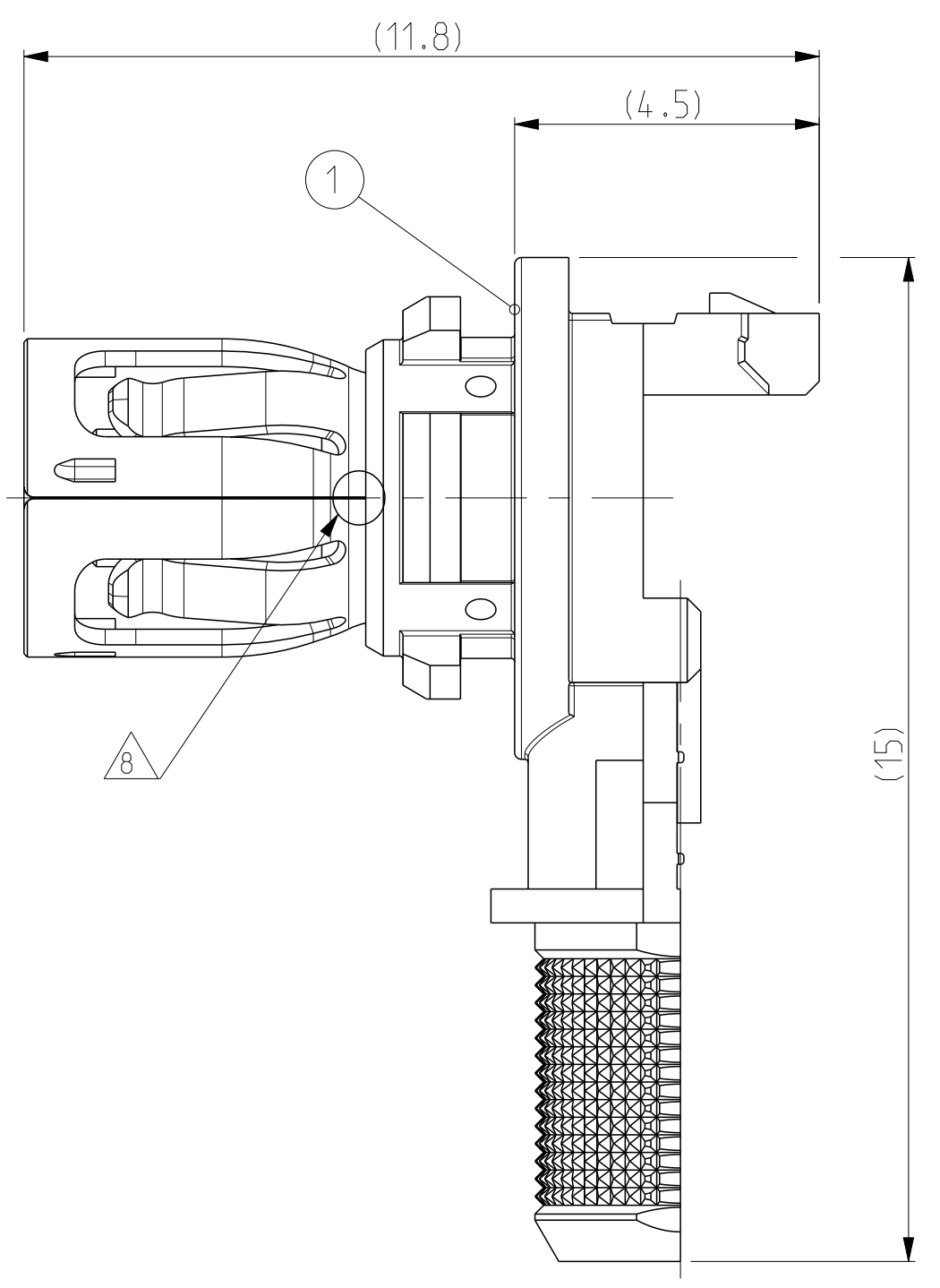


CENTER CONTACT (ITEM 2) / Innenleiter (Item 2)

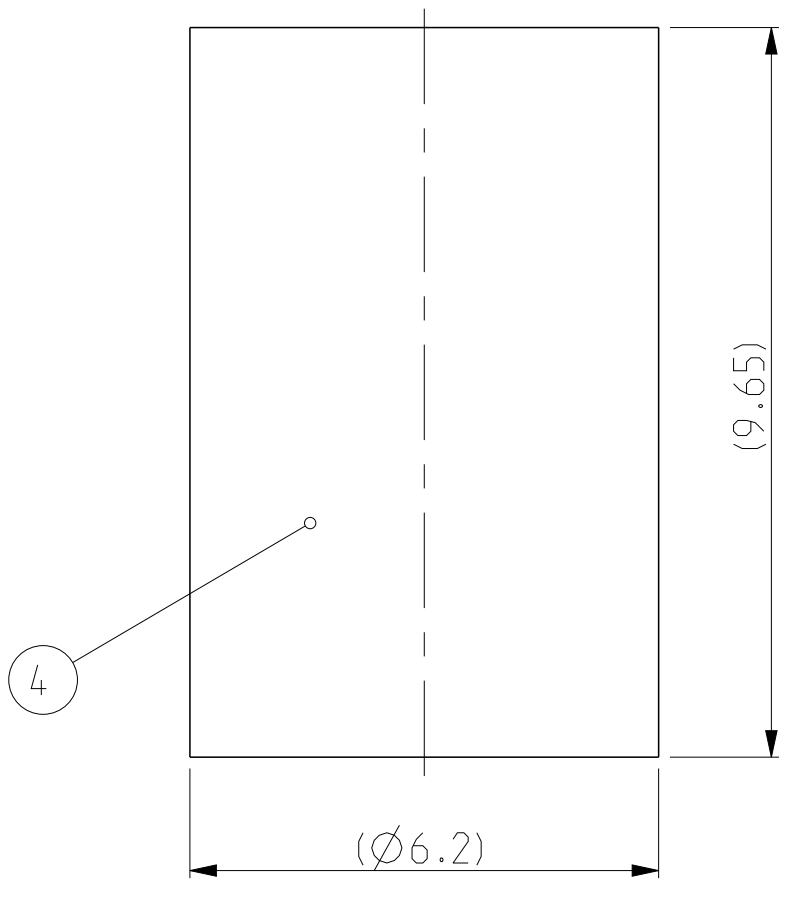
CABLE TYPES Kabeltypen	Ø "A"	Ø "B"	Ø "C"	Ø "D"
RG58LL (TE-P/N 1832991-1)	Ø1.02 nom.	Ø2.89 nom.	Ø3.51 nom.	Ø4.95 nom.



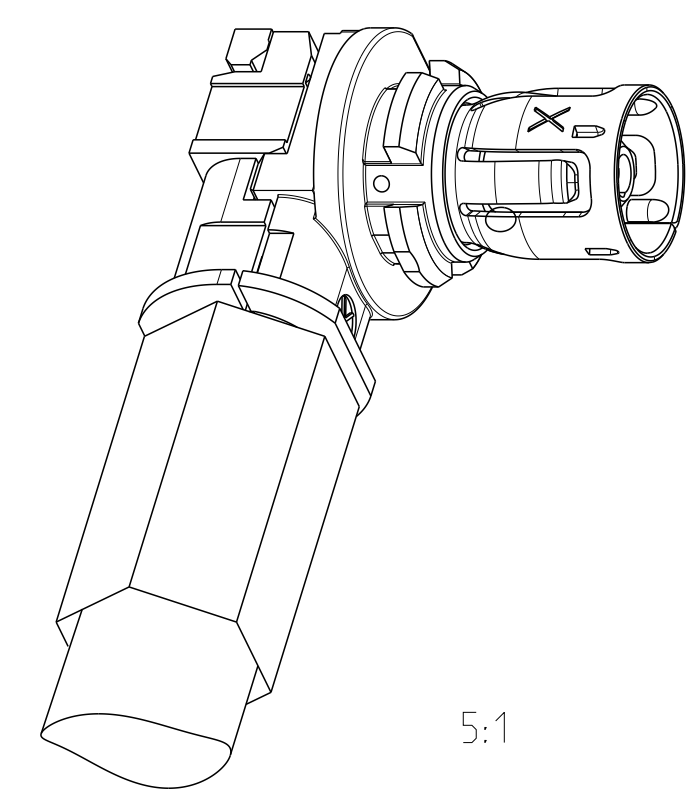
RECOMMENDED STRIP DIMENSIONS / Empfohlene Abisolierdimensionen
 SEE APPLICATION SPECIFICATION / Siehe Verarbeitungsspezifikation



- 1 2-4 µm Ni
- 2 2-4 µm Sn OVER 1.25 µm MIN. Ni OVER 5.08 µm MIN. Cu
 2-4 µm Sn ueber min. 1.25 µm Ni ueber min. 5.08 µm Cu
- 3 ZONE I: 0.8 µm MIN. Au OVER 1.3 µm MIN. Ni
 ZONE II: 2-4 µm Sn OVER 0.1 µm MIN. Ni
 ZONE III: 0.1µm MIN. Ni
 Zone I: min. 0.8 µm Au ueber min. 1.3 µm Ni
 Zone II: 2-4 µm Sn ueber min. 0.1 µm Ni
 Zone III: min. 0.1 µm Ni
- 4 PRETINNED (1-3 µm Sn)
 Vorverzinnt (1-3 µm Sn)
- 5. THE CONNECTOR MUST FULFILL THE DIMENSIONAL REQUIREMENTS OF DIN 72594-1, RELEASED MARCH 2006, AND THE MECHANICAL AND ELECTRICAL REQUIREMENTS OF USCAR 17 REV. 2. Der Kuppler muss die dimensionellen Anforderungen nach DIN 72594-1, Ausgabe Maerz 2006, und die elektrischen und mechanischen Anforderungen nach SAE/USCAR 17 rev. 2 erfullen.
- 6 COMPONENTS MUST BE PURCHASED SEPARATELY.
 Komponenten sind separat zu bestellen.
- 7 CRIMP TO BE MEASURED AT THIS POINT SEE APPLICATION SPECIFICATION.
 Crimp an diesem Punkt zu Messen Ausfuehrung siehe Verarbeitungsspezifikation.
- 8 WELDING POINT
 Schweißpunkt
- 9. CHARACTERS ON THE PARTS STAND FOR THE REVISION OF THAT COMPONENT, NOT OF THE SUBASSEMBLY OR ASSEMBLY.
 Die Buchstaben auf den Teilen stehen fuer die Revision der entsprechende Komponente, nicht des Subassembly oder Assembly.
- 10. PACKAGING: ITEM 1, 3, 4 - LOOSE PIECES IN PLASTIC BAG AND BOX, ITEM 2 ON REEL IN BOX
 Verpackung: Pos. 1, 3, 4 - Schüttgut im Beutel und Karton, Pos. 2 - Spule im Karton
- 11. NOTE WAS REMOVED



FERRULE (ITEM 4)



5:1

CABLE	CONTACT KIT	PART NO. TO BE ORDERED	ITEM NO	DESCRIPTION	MATERIAL	PLATING
		2297871-1	4	FERRULE Crimphuelse	SFCu	1
		2141945-1	3	REAR SHELL SUBASSY Hinterschale (Deckel)	3a. PBT 3b. Zn-Leg. Zn-ALLOY	2
		2141947-2	2	CENTER CONTACT Innenleiterkontakt	CuNiSi	3
		2141944-1	1	FRONT SHELL SUBASSY Subassembly	1a. CuNiSi 1b. PEHD 1c. Zn-Leg. Zn-ALLOY	4 2

SUPERSEDED BY 2141946-3

1832991-1 (RG58LL)

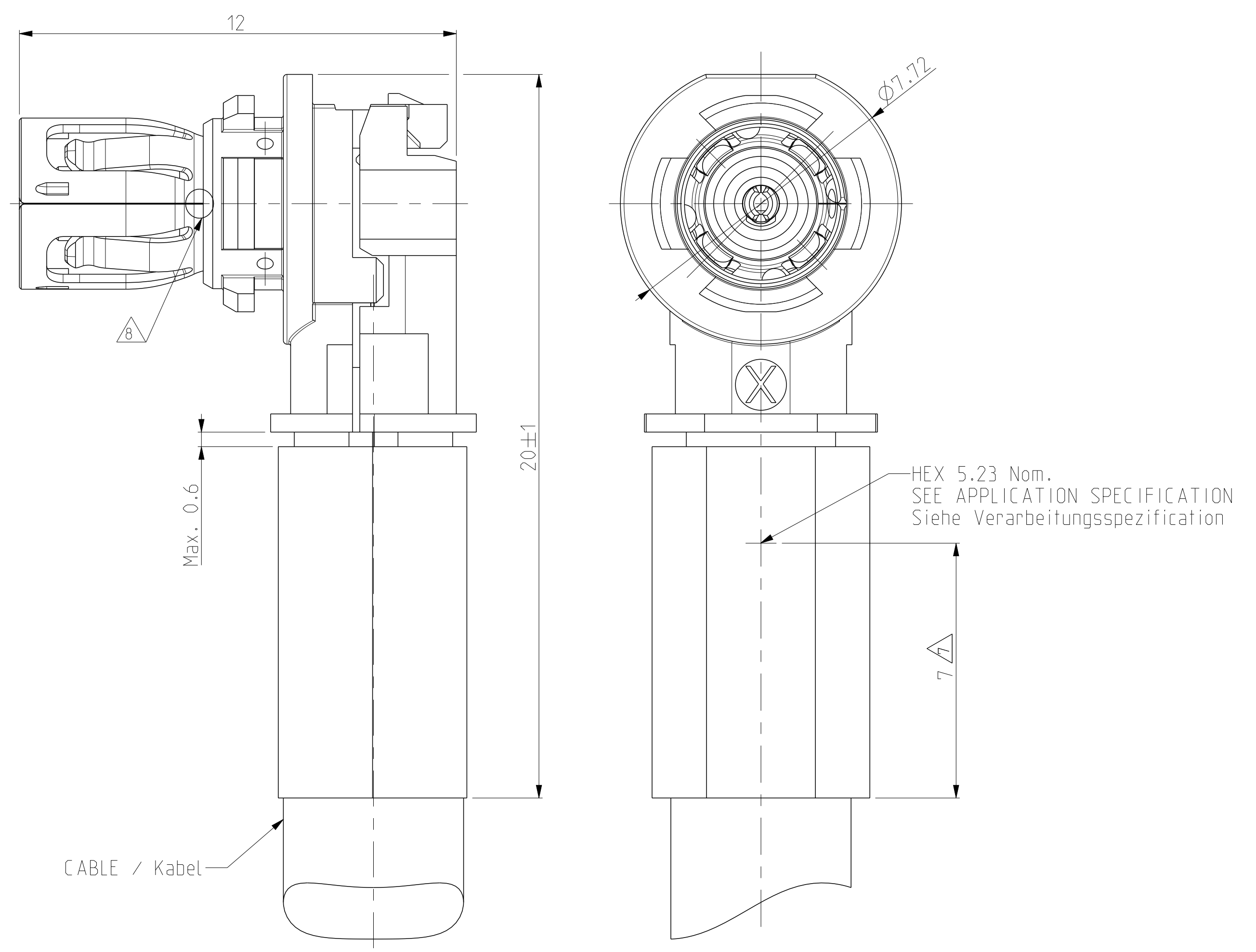
2141946-2

THIS DRAWING IS A CONTROLLED DOCUMENT. DIMENSIONING AND TOLERANCING PER GPS (ISO STANDARDS) 150 2768-HE

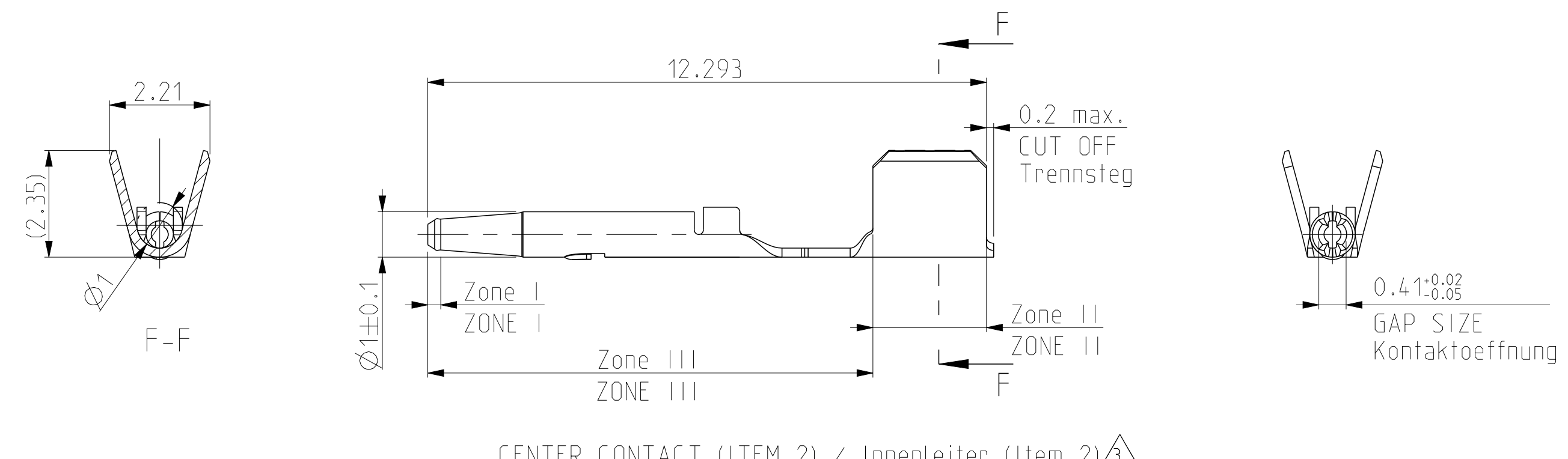
OWN: Tyco Electronics
 CHK: S. Ryska
 APVD: T. Konecny
 DATE: 10 JAN 2011
 NAME: Contact Kit, Plug, Unassembled HF FAKRA 90 DEG. FIX VERSION RG58LL, AMC 4.0
 SIZE: A1
 WEIGHT: 2.435g
 CUSTOMER DRAWING

TE Connectivity

SCALE: 10:1 SHEET 2 OF 3 REV: A4

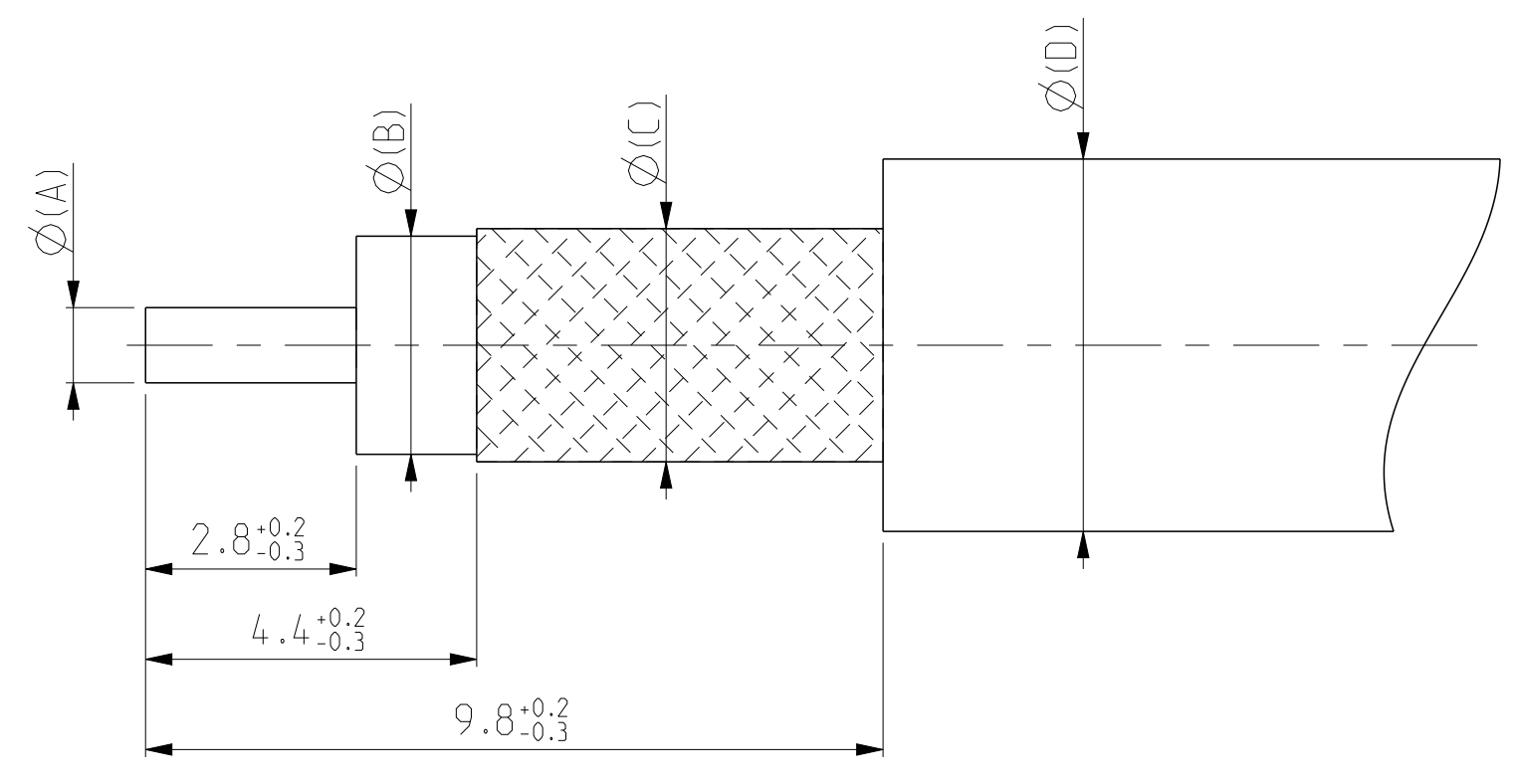


ASSEMBLED VIEWS / Assembled Views

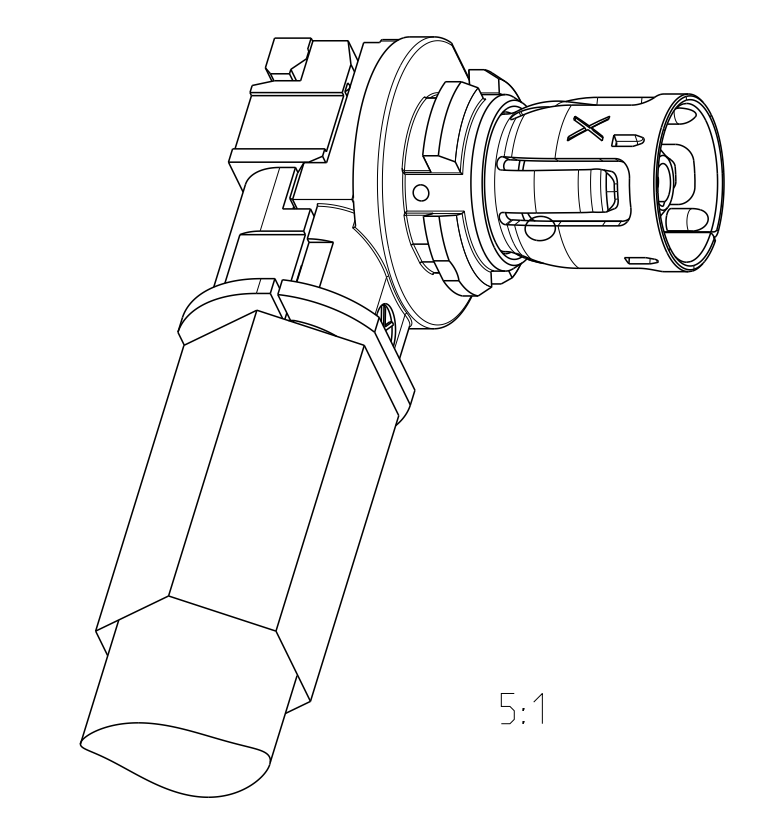


CENTER CONTACT (ITEM 2) / Innenleiter (Item 2)

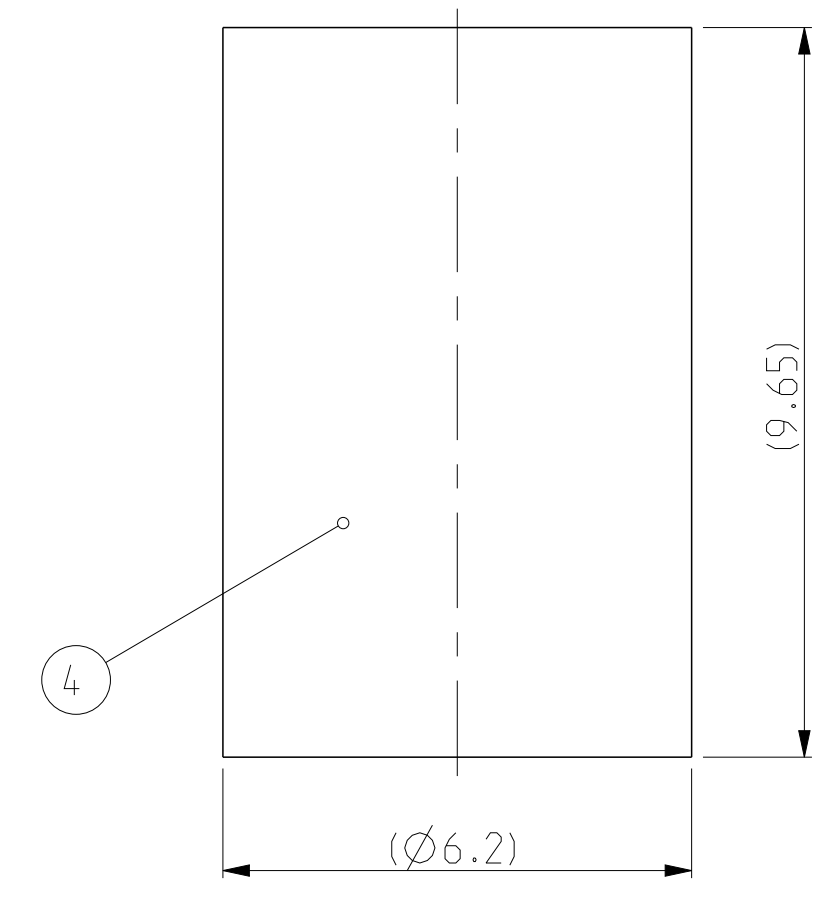
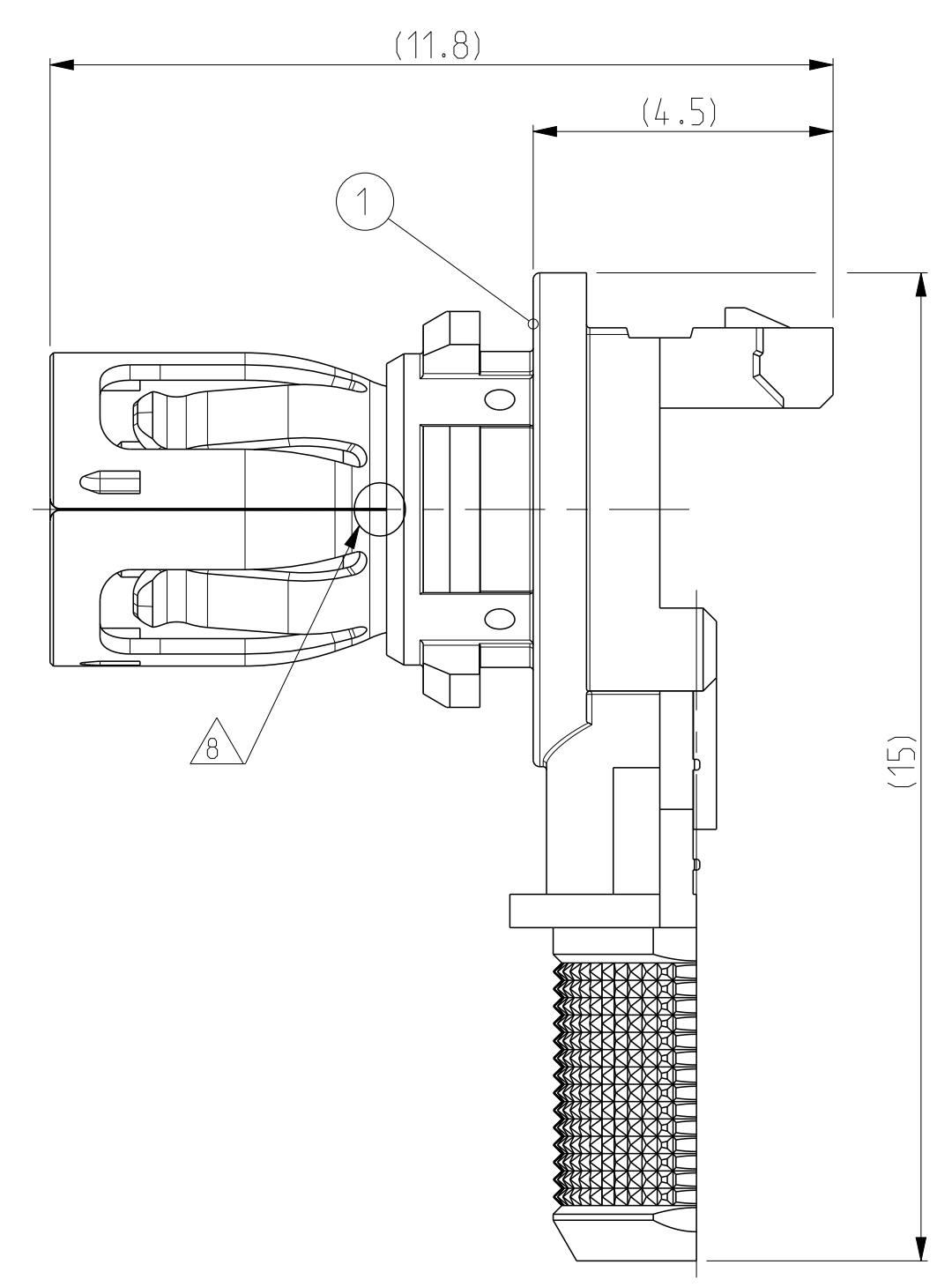
CABLE TYPES Kabeltypen	Ø "A"	Ø "B"	Ø "C"	Ø "D"
RG58LL (TE-P/N 1832991-1)	Ø1.02 nom.	Ø2.89 nom.	Ø3.51 nom.	Ø4.95 nom.



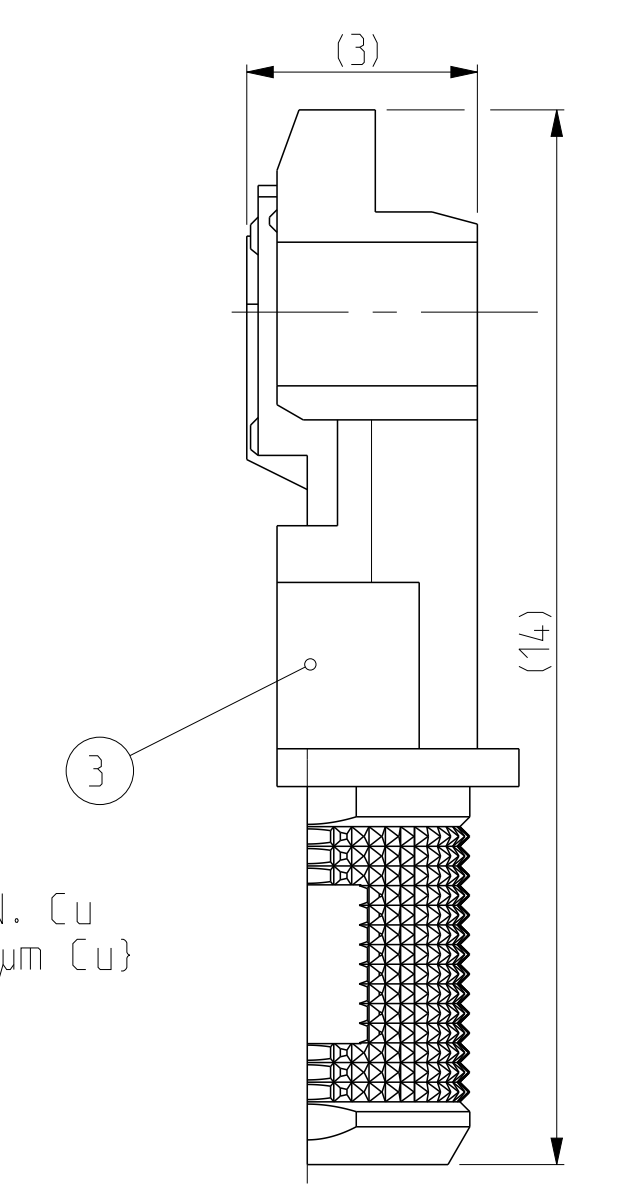
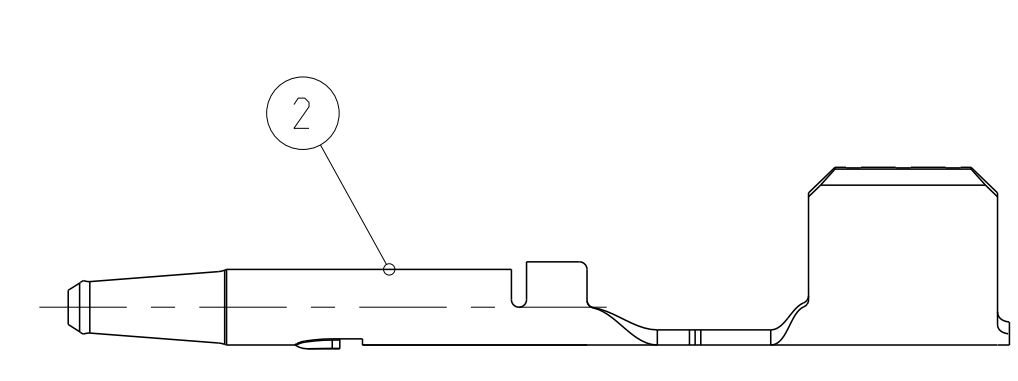
RECOMMENDED STRIP DIMENSIONS / Empfohlene Abisolierdimensionen
 SEE APPLICATION SPECIFICATION / Siehe Verarbeitungsspezifikation



5:1



FERRULE (ITEM 4)



- 1 2-4 µm Ni
- 2 2-4 µm Sn OVER 1.25 µm MIN. Ni OVER 5.08 µm MIN. Cu
2-4 µm Sn ueber min. 1.25 µm Ni ueber min. 5.08 µm Cu
- 3 ZONE I: 0.8 µm MIN. Au OVER 1.3 µm MIN. Ni
ZONE II: 2-4 µm Sn OVER 0.1 µm MIN. Ni
ZONE III: 0.1µm MIN. Ni
Zone I: min. 0.8 µm Au ueber min. 1.3 µm Ni
Zone II: 2-4 µm Sn ueber min. 0.1 µm Ni
Zone III: min. 0.1 µm Ni
- 4 PRETINNED (1-3 µm Sn)
Vorverzinnt (1-3 µm Sn)
- 5. THE CONNECTOR MUST FULFILL THE DIMENSIONAL REQUIREMENTS OF DIN 72594-1, RELEASED MARCH 2006, AND THE MECHANICAL AND ELECTRICAL REQUIREMENTS OF USCAR 17 REV. 2. Der Kuppler muss die dimensionellen Anforderungen nach DIN 72594-1, Ausgabe Maerz 2006, und die elektrischen und mechanischen Anforderungen nach SAE/USCAR 17 rev. 2 erfullen.
- 6 COMPONENTS MUST BE PURCHASED SEPARATELY.
Komponenten sind separat zu bestellen.
- 7 CRIMP TO BE MEASURED AT THIS POINT SEE APPLICATION SPECIFICATION.
Crimp an diesem Punkt zu Messen Ausfuehrung siehe Verarbeitungsspezifikation.
- 8 WELDING POINT
Schweißpunkt
- 9. CHARACTERS ON THE PARTS STAND FOR THE REVISION OF THAT COMPONENT, NOT OF THE SUBASSEMBLY OR ASSEMBLY.
Die Buchstaben auf den Teilen stehen fuer die Revision der entsprechende Komponente, nicht des Subassembly oder Assembly.
- 10. PACKAGING: ITEM 1, 3, 4 - LOOSE PIECES IN PLASTIC BAG AND BOX, ITEM 2 ON REEL IN BOX
Verpackung: Pos. 1, 3, 4 - Schüttgut im Beutel und Karton, Pos. 2 - Spule im Karton
- 11. NOTE WAS REMOVED

REVISIONS				
P.	LTN	DESCRIPTION	DATE	OWN APVD
-	-	SEE SHEET 1	-	-

1832991-1 (RG58LL)	2141946-3	2297871-1	4	FERRULE Crimphuelse	SFCu	1
		2141945-1	3	REAR SHELL SUBASSY Hinterschale (Deckel)	3a. PBT 3b. Zn-Leg. Zn-ALLOY	2
		2141947-3	2	CENTER CONTACT Innenleiterkontakt	CuNiSi	3
		2141944-1	1	FRONT SHELL SUBASSY Subassembly	1a. CuNiSi 1b. PEHD 1c. Zn-Leg. Zn-ALLOY	4 2
CABLE	CONTACT KIT	PART NO. TO BE ORDERED	ITEM NO	DESCRIPTION	MATERIAL	PLATING

THIS DRAWING IS A CONTROLLED DOCUMENT. DIMENSIONING AND TOLERANCING PER GPS (ISO STANDARDS).
 DIMENSIONS: mm
 TOLERANCES UNLESS OTHERWISE SPECIFIED: ISO 2768-HE
 0 PLC ±0.2
 1 PLC ±0.1
 2 PLC ±0.1
 3 PLC ±0.1
 4 PLC ±0.1
 ANGLES ±°
 MATERIAL: SEE TABLE
 FINISH: SEE TABLE

OWN: V. Cech 01DEC2010
 CHK: S. Ryska 10JAN2011
 APVD: T. Konecny 12JAN2011
 NAME: Contact Kit, Plug, Unassembled HF FAKRA 90 DEG. FIX VERSION RG58LL, AMC 4.0
 PRODUCT SPEC: 108-94089
 APPLICATION SPEC: 114-18623
 WEIGHT: 2.435g
 CUSTOMER DRAWING

STE TE Connectivity
 SIZE: A1
 CAGE CODE: -
 DRAWING NO: C=2141946
 RESTRICTED TO: -
 SCALE: 10:1
 SHEET: 3 OF 3
 REV: A4