



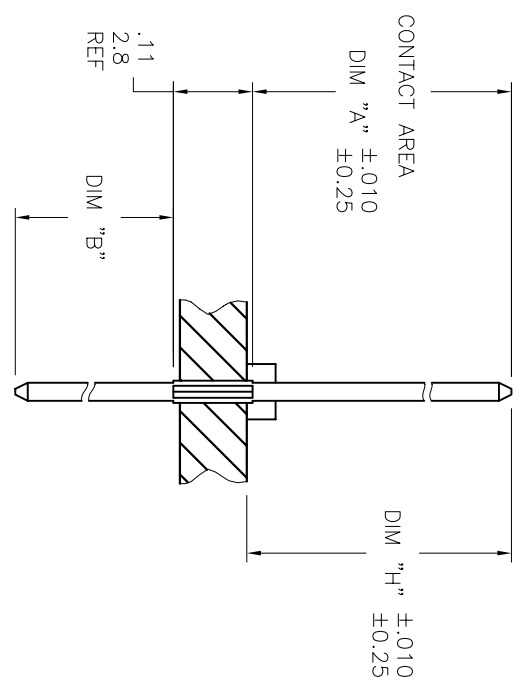
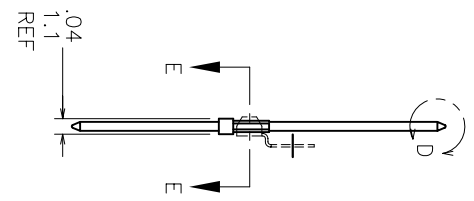
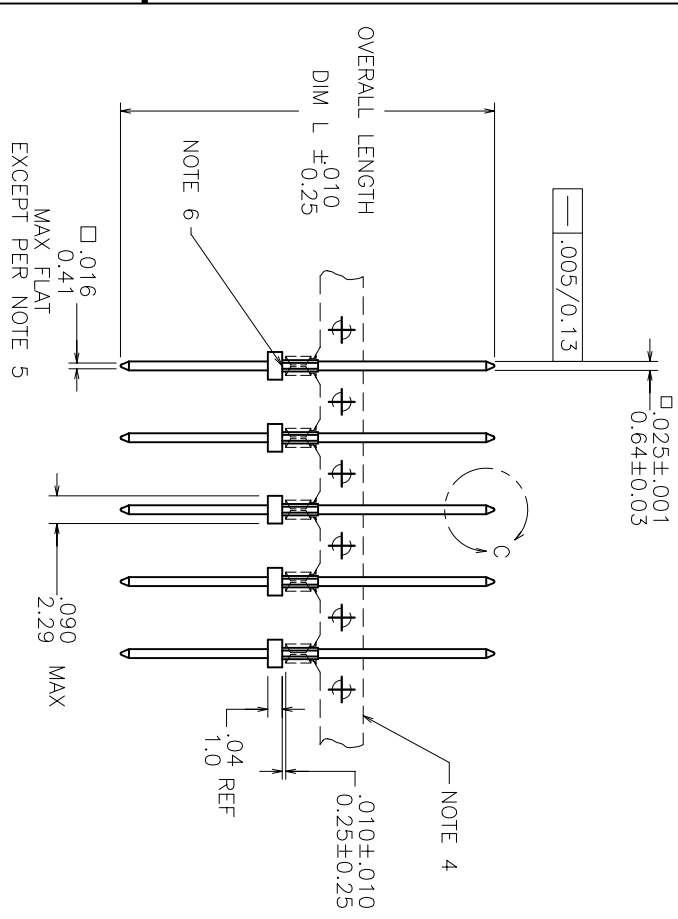
Copyright FD



FCIconnect.com



PRODUCT NUMBER  
SEE TABLE



SECTION THRU PC BOARD  
SCALE 4:1

mat'l code	surface	tolerance	projection	product family
SEE NOTE 1	ASME Y14.5	ASME Y14.5		PIN PRODUCTS
ltr	ecm no.	date	intolerances unless otherwise specified	title
A	V51002	MDF 1995-08-17	angles	BERGPI® 2007S.08]c
B	V51067	MDF 1995-10-03	0°±2°	.041 [1.04] DIA., .110 [2.79] LONG STAR
C	V61411	EPK 1996-11-14	XXXX-005/XX-3	WITH SOLDER WASHER
D	V92858	DLW 1999-08-30	XXXX-0020/XXX-051	Scale: 2:1
E	V06-0682	Lrv/ 2006-07-18	M. FETROW	Sheet 1 of 3
F	V08-0354	HTB 2008-06-20	L. FYE	71258
Sheet Index	revision	Sheet	L. FYE	A4
	1	2	3	CUSTOMER Drawing

Form: ADMX11C 1 2 3 4



Copyright FD



FCIconnect.com

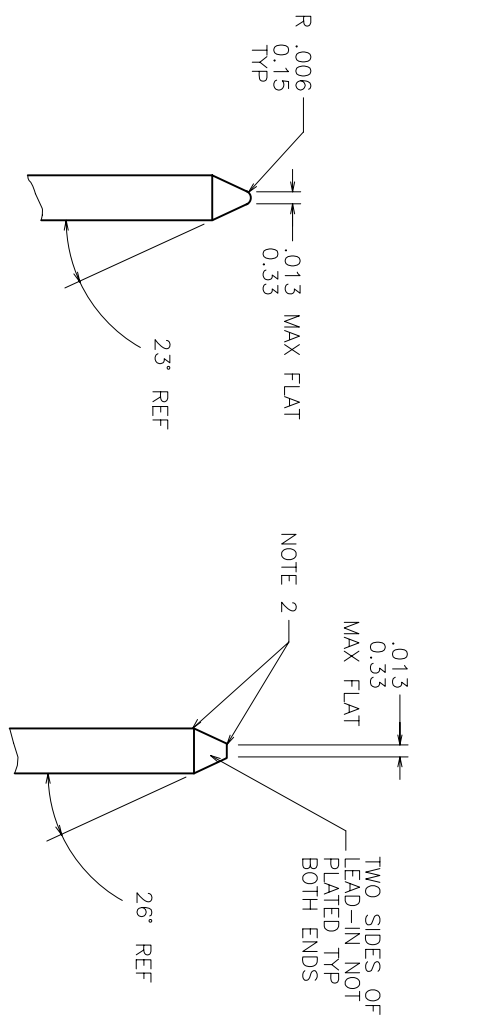


PRODUCT NUMBER  
SEE TABLE

1 | 2

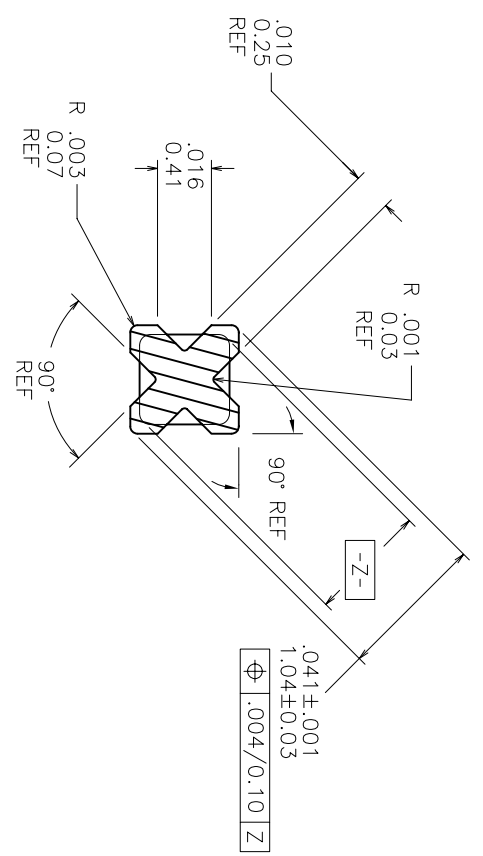
3 |

4



TRIM  
DETAIL C  
TYP BOTH ENDS

SWEDGE  
DETAIL D  
TYP BOTH ENDS



SECTION E-E  
SCALE 2:1  
(FERRULE REMOVED)

mat'l code	SEE NOTE 1	surface	tolerance	projection	product family
litr	ecm no	date	ASME Y14.5	ASME Y14.5	PIN PRODUCTS
F		angles	inferences unless otherwise specified	INCH/MM	BERG PIN® 200 [1.5, 0.8]lc
		0°±2°		Scale: 1:1	.041 [1.04] DIA., .110 [2.79] LONG STAR WITH SOLDER WASHER
		dr	M. FETROW		Sheet 2 of 3
		pdqj	L. FYE		A4
		dlr	L. FYE		CUSTOMER Drawing
		qdd	L. FYE		
Sheet Index	revision	Sheet			

1

2

3

4

B

A

A

B

Form: AdminXlc

PRODUCT NUMBER	CONTACT AREA DIM A	TERMINATION AREA DIM B	OVERALL LENGTH DIM L	DIM H FOR .093/2.36 THK BOARD	DIM H FOR .125/3.18 THK BOARD
71258-010	.140/3.56	.100/2.54	.350/8.89	.318/8.08	.302/7.67
71258-020	.240/6.10	.040/1.02	.390/9.91	.148/3.76	.132/3.35
71258-030	.270/6.86	.040/1.02	.420/10.67	.248/6.30	.232/5.89
71258-040	.290/7.37	.040/1.02	.440/11.18	.278/7.06	.262/6.66
71258-050	.310/7.87	.040/1.02	.460/11.68	.298/7.57	.282/7.16
71258-060	.310/7.87	.090/2.29	.510/12.95	.318/8.08	.302/7.67
71258-070	.310/7.87	.120/3.05	.540/13.72	.318/8.08	.302/7.67
71258-080	.310/7.87	.170/4.32	.590/14.99	.318/8.08	.302/7.67
71258-090	.310/7.87	.270/6.86	.690/17.53	.318/8.08	.302/7.67
71258-100	.330/8.38	.040/1.02	.480/12.19	.338/8.59	.322/8.18
71258-110	.360/9.14	.040/1.02	.510/12.95	.368/9.35	.352/8.94
71258-120	.360/9.14	.310/7.87	.780/19.81	.368/9.35	.352/8.94
71258-130	.390/9.91	.040/1.02	.540/13.72	.398/10.11	.382/9.70
71258-140	.430/10.92	.040/1.02	.580/14.73	.438/11.25	.322/8.18
71258-150	.450/11.43	.040/1.02	.600/15.24	.458/11.63	.442/11.23
71258-160	.470/11.94	.460/11.68	1.040/26.42	.478/12.14	.462/11.74
71258-170	.485/12.32	.105/2.67	.700/17.78	.493/12.52	.477/12.12
71258-180	.567/14.40	.456/11.58	.933/23.70	.575/14.61	.559/14.20
71258-190	.585/14.86	.105/2.67	.800/20.32	.593/15.06	.577/14.60
71258-200	.590/14.99	.040/1.02	.740/18.80	.598/15.19	.582/14.78
71258-210	.705/17.91	.040/1.02	.855/21.72	.713/18.11	.697/17.70

1 | 2

3 |

4

NOTES:

- ① PIN MAT'L:  
3/4 HARD PHOS BRONZE  
PLATING:  
50µ [0.76µ] MIN Au OVER 50µ [1.27µ] MIN Ni.
- ② BURRISH MARKS ON PIN PERMITTED.  
BURR: .003 [0.08] MAX, BULGE: .0005 [0.013] MAX TYP.
- ③ SEE PRODUCT SPECIFICATION BUS-12-064 FOR P.C. BOARD HOLE DIAMETER AND P.C. BOARD HOLE PLATING INFORMATION.
- ④ FOR MANUFACTURING PURPOSES ONLY.
- ⑤ DOUBLE ENDED PINS AS MARKED MUST MEET SPECS IN VIEWS C AND D ON BOTH ENDS. OTHERS TO HAVE .016 [0.41] MAX DIM ON BOTTOM END OF PIN.
- ⑥ SOLDER MAY BULGE IN THIS AREA BUT WILL NOT TOUCH FERRULE.  
SOLDER VOLUME: .825 MIN PER PIN  
(.068 X .074 X .021 ) BEFORE FORMING.
- 7. "A" DIM. IS TO FEATURE ON PIN.  
"H" DIM. IS ABOVE BOARD.  
"B" DIM. IS TO FEATURE ON PIN.

PRODUCT NUMBER	CONTACT AREA DIM A	TERMINATION AREA DIM B	OVERALL LENGTH DIM L	DIM H FOR .093/2.36 THK BOARD	DIM H FOR .125/3.18 THK BOARD
71258-010	.140/3.56	.100/2.54	.350/8.89	.318/8.08	.302/7.67
71258-020	.240/6.10	.040/1.02	.390/9.91	.148/3.76	.132/3.35
71258-030	.270/6.86	.040/1.02	.420/10.67	.248/6.30	.232/5.89
71258-040	.290/7.37	.040/1.02	.440/11.18	.278/7.06	.262/6.66
71258-050	.310/7.87	.040/1.02	.460/11.68	.298/7.57	.282/7.16
71258-060	.310/7.87	.090/2.29	.510/12.95	.318/8.08	.302/7.67
71258-070	.310/7.87	.120/3.05	.540/13.72	.318/8.08	.302/7.67
71258-080	.310/7.87	.170/4.32	.590/14.99	.318/8.08	.302/7.67
71258-090	.310/7.87	.270/6.86	.690/17.53	.318/8.08	.302/7.67
71258-100	.330/8.38	.040/1.02	.480/12.19	.338/8.59	.322/8.18
71258-110	.360/9.14	.040/1.02	.510/12.95	.368/9.35	.352/8.94
71258-120	.360/9.14	.310/7.87	.780/19.81	.368/9.35	.352/8.94
71258-130	.390/9.91	.040/1.02	.540/13.72	.398/10.11	.382/9.70
71258-140	.430/10.92	.040/1.02	.580/14.73	.438/11.25	.322/8.18
71258-150	.450/11.43	.040/1.02	.600/15.24	.458/11.63	.442/11.23
71258-160	.470/11.94	.460/11.68	1.040/26.42	.478/12.14	.462/11.74
71258-170	.485/12.32	.105/2.67	.700/17.78	.493/12.52	.477/12.12
71258-180	.567/14.40	.456/11.58	.933/23.70	.575/14.61	.559/14.20
71258-190	.585/14.86	.105/2.67	.800/20.32	.593/15.06	.577/14.60
71258-200	.590/14.99	.040/1.02	.740/18.80	.598/15.19	.582/14.78
71258-210	.705/17.91	.040/1.02	.855/21.72	.713/18.11	.697/17.70

1 |

2 |

3 |

4

mat'l code	SEE NOTE 1	surface	tolerance	projection	product family
litr	ecn no	dr	date	ASME Y14.5	ASME Y14.5
F		angles	XXX-007/XX-3	INCH/MM	PIN PRODUCTS
		dr	XXXX-002/XXX-051	Scale 1:1	
		dr	M. FETROW 1995-08-17		
		dr	L. FYE 1995-08-17		
		dr	L. FYE 1995-08-17		
		dr	L. FYE 1995-08-17		
Sheet Index	revision	Sheet			

B

B

form: AdminXic