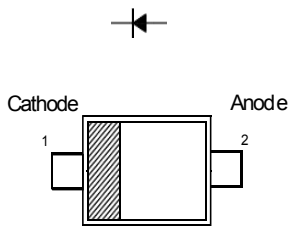
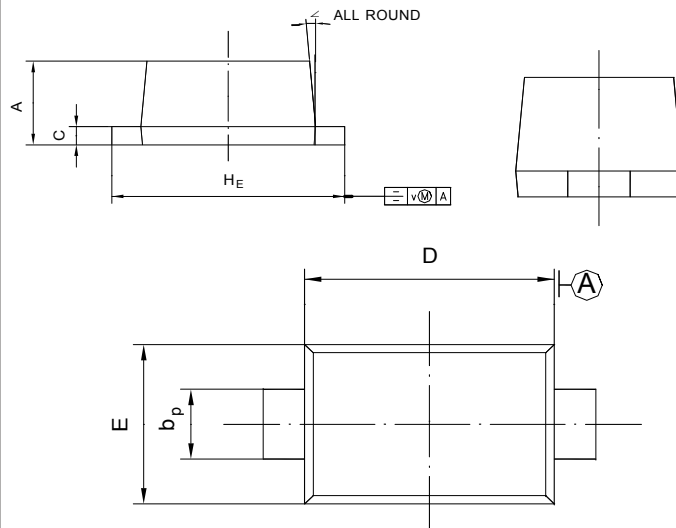


Features

- Low Forward Voltage



SOD-523



UNIT	A	b _p	C	D	E	H _E	V	∠
mm	0.70 0.50	0.40 0.20	0.14 0.05	1.30 1.10	0.90 0.75	1.70 1.50	0.1	5°

Absolute Maximum Ratings (T_a = 25 °C)

Parameter	Symbol	Value	Unit
Peak Repetitive Reverse Voltage	SD103AWT SD103BWT SD103CWT	40 30 20	V
Reverse Voltage	SD103AWT SD103BWT SD103CWT	40 30 20	V
Average Forward Rectified Current	I _{F(AV)}	350	mA
Non-Repetitive Peak Forward Surge Current at t = 1 s	I _{FSM}	2	A
Power Dissipation	P _{tot}	200	mW
Operating and Storage Temperature Range	T _j , T _{stg}	- 65 to + 125	°C

SD103AWT/SD103BWT/SD103CWT

Characteristics at $T_a = 25\text{ }^\circ\text{C}$

Parameter	Symbol	Min.	Typ.	Max.	Unit	
Reverse Breakdown Voltage at $I_R = 10\mu\text{A}$	SD103AWT SD103BWT SD103CWT	$V_{(BR)R}$	40 30 20	- - -	- - -	V
Reverse Leakage Current at $V_R = 30\text{V}$ at $V_R = 20\text{V}$ at $V_R = 10\text{V}$	SD103AWT SD103BWT SD103CWT	I_R	- - -	- - -	5 5 5	μA
Forward Voltage at $I_F = 20\text{mA}$ at $I_F = 200\text{mA}$		V_F	- -	- -	0.37 0.6	V
Total Capacitance at $V_R = 0\text{V}$, $f = 1\text{MHz}$		C_T	-	50	-	pF
Reverse Recovery Time at $I_F = I_R = 200\text{mA}$, $I_{rr} = 0.1 I_R$, $R_L = 100\ \Omega$		t_{rr}	-	10	-	ns

RATING AND CHARACTERISTIC CURVES (SD103AWT/SD103BWT/SD103CWT)

