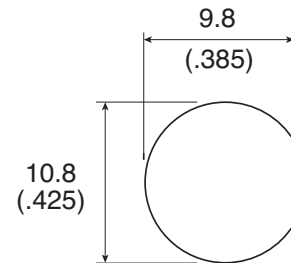
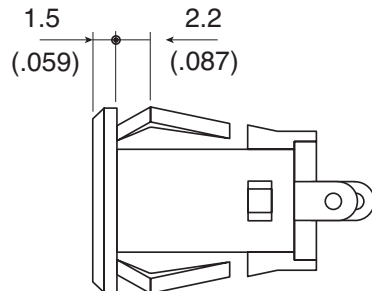
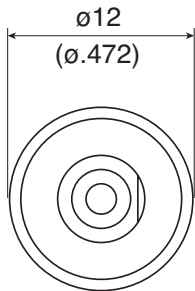
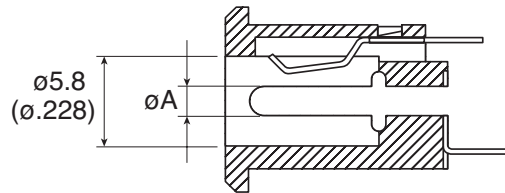
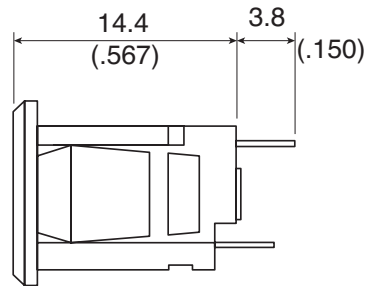


DIMENSIONS: mm(in.)



MOUNTING HOLE DIMENSION

(t=1.0~1.8mm)

Specifications:

- Rating : (163-1060-EX) DC12V 0.5A, (163-1061-EX) DC12V 1A
- Contact resistance : 30mΩ max
- Insulation resistance : DC500V 100MΩ min.
- Withstand voltage : AC500V for 1 min.
- Terminal : Silver plated brass
- Contact spring : Silver plated copper
- Pin : Nickel plated brass
- Diameter (A) : 163-1060-EX = $\phi 1.9\text{mm} \pm .30$
163-1061-EX = $\phi 2.35\text{mm} \pm .30$

Note: RoHS Compliant by Exemption

Mouser Electronics

Authorized Distributor

Click to View Pricing, Inventory, Delivery & Lifecycle Information:

[Kobiconn:](#)

[163-1061-EX](#) [163-1060-EX](#)