



Main

Range of Product	Altivar
Product or Component Type	EMC input filter
Range Compatibility	Altivar Machine ATV340
Product compatibility	Variable speed drive ATV34015 kW, 380...480 V Variable speed drive ATV34011 kW, 380...480 V
Product Specific Application	Radio interference input filter
Mounting location	At variable speed drive side
Line Rated Current	50 A
Thermal losses	8 W
Phase	Three phase

Complementary

Electrical connection	Terminal 16 mm ² AWG 4
Maximum motor cable length	328.08 Ft (100 m) shielded motor cable 4 kHz IEC 61800-3 category C3, 380...480 V 164.04 ft (50 m) shielded motor cable 4 kHz IEC 61800-3 category C2, 380...480 V
Maximum earth leakage current	7.6 mA 400 V 50 Hz TN
Power supply voltage	380...480 V
Tolerance	10 %
Mechanical robustness	Shocks class 3M4 IEC 60721-3-3 Vibrations class 3M4 IEC 60721-3-3
Width	3.5 in (90 mm)
Height	11.2 in (285 mm)
Depth	6.7 in (170 mm)
Net Weight	11.5 lb(US) (5.2 kg)

Environment

IP degree of protection	IP20mounting side by side
Relative humidity	5...95 % without condensation IEC 61800-5-1
Ambient air temperature for operation	14...122 °F (-10...50 °C) without current derating 122...140 °F (50...60 °C) with current derating 1.5 % per °C)
Ambient Air Temperature for Storage	-40...158 °F (-40...70 °C)
Operating altitude	0...3280.84 ft (0...1000 m) without current derating 3280.84...13123.36 ft (1000...4000 m) with current derating 1 % per 100 m
Standards	IEC 61800-3

Ordering and shipping details

Category	US1CP4B22184
Discount Schedule	CP4B
GTIN	3606481164780
Returnability	Yes
Country of origin	US

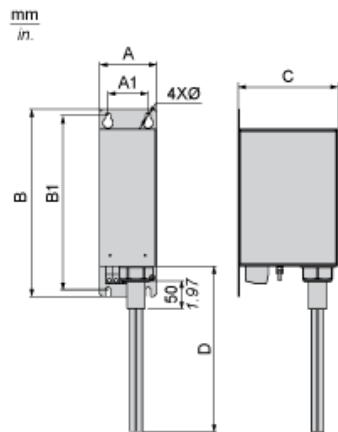
Packing Units

Unit Type of Package 1	PCE
Number of Units in Package 1	1
Package 1 Height	11.339 in (28.800 cm)
Package 1 Width	14.764 in (37.500 cm)
Package 1 Length	20.866 in (53.000 cm)
Package 1 Weight	13.095 lb(US) (5.940 kg)
Unit Type of Package 2	P06
Number of Units in Package 2	4
Package 2 Height	29.528 in (75.000 cm)
Package 2 Width	23.622 in (60.000 cm)
Package 2 Length	31.496 in (80.000 cm)
Package 2 Weight	71.121 lb(US) (32.260 kg)

Offer Sustainability

California proposition 65	"WARNING: This product can expose you to chemicals including: Lead and lead compounds, which is known to the State of California to cause cancer and birth defects or other reproductive harm. For more information go to www.P65Warnings.ca.gov "
REACH Regulation	REACH Declaration
REACH free of SVHC	Yes
EU RoHS Directive	Pro-active compliance (Product out of EU RoHS legal scope) EU RoHS Declaration
Toxic heavy metal free	Yes
Mercury free	Yes
China RoHS Regulation	China RoHS Declaration
RoHS exemption information	Yes

Dimensions



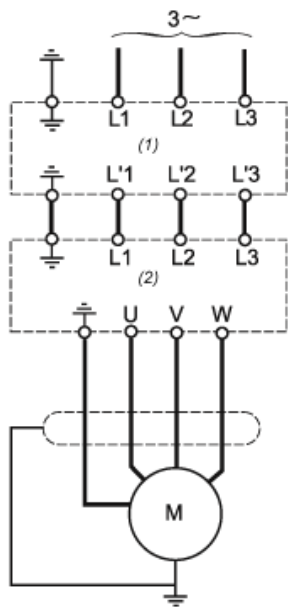
Dimensions in mm

A	B	C	D	A1	B1	Ø
90	283	165	950	70	268	5.5

Dimensions in in.

A	B	C	D	A1	B1	Ø
3.5	11.1	6.5	37.4	2.8	10.6	0.22

Recommended Schema



- (1) Filter
- (2) Drive