



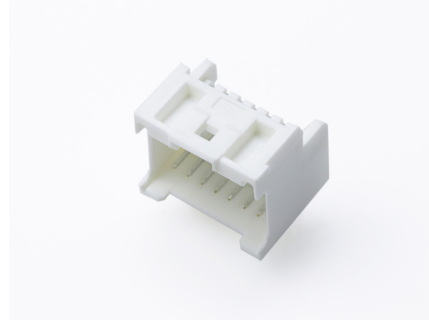
**Part Number :** [559591430](#)

**Product Description :** 2.00mm Pitch  
MicroClasp Wire-to-Board Header, Dual Row,  
Right Angle, 14 Circuits

**Series Number :** 55959

**Status :** Active

**Product Category :** PCB Headers and  
Receptacles



---

## Documents & Resources

### Drawings

[Drawing 559591430\\_sd.pdf](#)

### 3D Models and Design Files

[3D Model 559591430\\_stp.zip](#)

### Specifications

[Application Specification 561340000-AS-000.pdf](#)

[Packaging Specification SPK-55959-001-001.pdf](#)

[Product Specification PS-51353-003-001.pdf](#)

[Product Specification PS-51353-010-001.pdf](#)

---

## Product Environment Compliance

### Compliance

GADSL/IMDS	Not Relevant
China RoHS	
EU ELV	Not Relevant
Low-Halogen Status	Not Low-Halogen per IEC 61249-2-21
REACH SVHC	Not Contained per D(2024)4144-DC (27 June 2024)
EU RoHS	Compliant per EU 2015/863

### Multiple Part Product Compliance Statements

- Eu RoHS
- REACH SVHC
- Low-Halogen

## Multiple Part Industry Compliance Documents

- IPC 1752A Class C
- IPC 1752A Class D
- Molex Product Compliance Declaration
- IEC-62474
- chemSHERPA (xml)

## EU RoHS Certificate of Compliance

---

### Part Details

#### General

Status	Active
Category	PCB Headers and Receptacles
Series	87437
Description	1.50mm Pitch, Pico-SPOX PCB Header, Single Row, Vertical, Surface Mount, Tin (Sn) Plating, Friction Lock, 5 Circuits, Tape and Reel, with Cap, Black
Application	Signal, Wire-to-Board
Component Type	PCB Header
Product Family	Pico-SPOX Wire-to-Board Connector System
Product Name	Pico-SPOX
UPC	822350757478

#### Agency

CSA	LR19980
UL	E29179

#### Electrical

Current - Maximum per Contact	2.5A
Voltage - Maximum	250V AC (RMS)/DC

#### Physical

Breakaway	No
Circuits (Loaded)	5
Circuits (maximum)	5
Color - Resin	Black

Durability (mating cycles max)	10
First Mate / Last Break	No
Flammability	94V-0
Glow-Wire Capable	No
Guide to Mating Part	No
Keying to Mating Part	None
Lock to Mating Part	Yes
Material - Metal	Brass
Material - Plating Mating	Tin
Material - Plating Termination	Tin
Material - Resin	Nylon
Net Weight	0.285/g
Number of Rows	1
Orientation	Vertical
Packaging Type	Embossed Tape on Reel
PCB Locator	No
PCB Retention	None
Pitch - Mating Interface	1.50mm
Plating min - Mating	2.540µm
Plating min - Termination	2.540µm
Polarized to Mating Part	Yes
Polarized to PCB	No
Robotic Placement	Pick and Place Cap
Shrouded	Fully
Stackable	No
Temperature Range - Operating	-55° to +105°C
Termination Interface Style	Surface Mount

---

## Mates With / Use With

### Mates with Part(s)

Description	Part Number
Pico-SPOX Single Row Receptacle Housings	<u>87439</u>

---

---

This document was generated on Sep 19, 2024