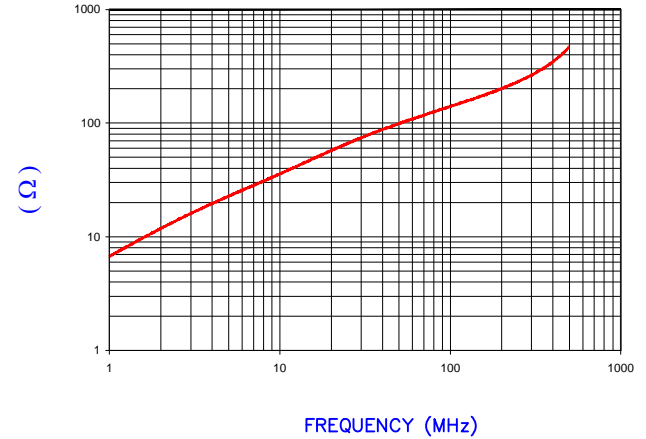


DETAIL "A"  
CHAMFER  
SCALE=8:1

IMPEDANCE ( Z )			
Frequency	25 MHz	100 MHz	300 MHz
Nominal (REF)	66 Ω	139 Ω	265 Ω
Minimum	- Ω	111 Ω	- Ω

Z vs. FREQUENCY  
(REF. ONLY)



AGILENT E4991A Impedance/Material Analyzer  
HP 16092A Test Fixture REF 3146

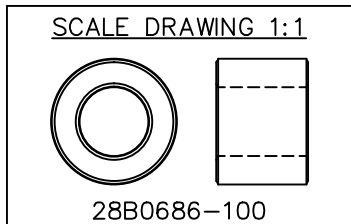
FERRITE CORE DIMENSIONS (SPEC): mm [in]

A	17.42 [.686]	+	0.36 [.014]
B	9.53 [.375]	+	0.20 [.008]
C	12.70 [.500]	+	0.25 [.010]

WEIGHT/1000      10.39 kgs      22.9 lbs

NOTES: UNLESS OTHERWISE SPECIFIED

1. COSMETIC SPECIFICATION REFER TO WI-QA-038.



DIMENSIONS ARE IN MM [INCHES]				This print is the property of Laird Tech. and is loaned in confidence subject to return upon request and with the understanding that no copies shall be made without the written consent of Laird Tech. All rights to design or invention are reserved.			
J	UPDATE THE LOGO	05/13/15	QIU				
H	CHG B DIM FROM 9.52 UPDATE COMPANY LOGO	05/29/08	JRK	PROJECT/PART NUMBER: <b>28B0686-100</b>	REV <b>J</b>	DRAWN BY: LNK	
G	UPDATE Z SPECS AND UPDATE COMPANY LOGO	06/12/07	JRK				
F	UPDATE MIN Z SPECS @100 MHz, ADD REF #	06/17/04	JRK				
E	UPDATE FORMAT, ADD CURVE, CHG P/N REM COATING SPECS	05/26/03	JRK				
D	UPDATE PRINT FORMAT ADD CHAMFER DETAIL	03/01/02	JRK				
C	CHG P/N TO 28B0686-10*, ADD COATING SPECS	04/07/99	I.S.				
B	UPDATED P/N FOR NEW CATALOG	10/30/95	JBE				
A	ORIGINAL DRAFT	9/08/92	LNK				
REV	DESCRIPTION	DATE	INT				
				CAD # 28B0686-100-J	TOOL # B0686		