



Sensors > Position Sensors > LVDT Sensors > GAGE HEAD WITH NYLON BEARING



Linearity Error (Full Range): $\pm 5\%$

Case Material: **Stainless Steel**

Product Diameter: **19.05 mm [.75 in]**

Product Shape: **Cylindrical**

Supply Voltage Range: **3 V**

Features

Product Type Features

Product Shape	Cylindrical
---------------	-------------

Configuration Features

Electrical Connection	Leads
-----------------------	-------

Electrical Characteristics

Supply Voltage Range	3 V
----------------------	-----

Signal Characteristics

Excitation Frequency	1 – 10 kHz
----------------------	------------

Body Features

Case Material	Stainless Steel
Core Configuration	Spring Loaded Core

Dimensions

Product Diameter	19.05 mm [.75 in]
------------------	-------------------

Usage Conditions

Operating Temperature Range	-55 – 95 °C [-67 – 203 °F]
-----------------------------	----------------------------

Industry Standards

IP Rating	IP61
-----------	------

Other

Linearity Error (Full Range)	±.5 %
------------------------------	-------

Product Compliance

[For compliance documentation, visit the product page on TE.com>](#)

EU RoHS Directive 2011/65/EU	Compliant
EU ELV Directive 2000/53/EC	Compliant
China RoHS 2 Directive MIIT Order No 32, 2016	No Restricted Materials Above Threshold
EU REACH Regulation (EC) No. 1907/2006	Current ECHA Candidate List: JUNE 2024 (241) Candidate List Declared Against: JAN 2021 (211) Does not contain REACH SVHC
Halogen Content	Not Yet Reviewed for halogen content
Solder Process Capability	Not reviewed for solder process capability

Product Compliance Disclaimer

This information is provided based on reasonable inquiry of our suppliers and represents our current actual knowledge based on the information they provided. This information is subject to change. The part numbers that TE has identified as EU RoHS compliant have a maximum concentration of 0.1% by weight in homogenous materials for lead, hexavalent chromium, mercury, PBB, PBDE, DBP, BBP, DEHP, DIBP, and 0.01% for cadmium, or qualify for an exemption to these limits as defined in the Annexes of Directive 2011/65/EU (RoHS2). Finished electrical and electronic equipment products will be CE marked as required by Directive 2011/65/EU. Components may not be CE marked. Additionally, the part numbers that TE has identified as EU ELV compliant have a maximum concentration of 0.1% by weight in homogenous materials for lead, hexavalent chromium, and mercury, and 0.01% for cadmium, or qualify for an exemption to these limits as defined in the Annexes of Directive 2000/53/EC (ELV). Regarding the REACH Regulation, the information TE provides on SVHC in articles for this part number is based on the latest European Chemicals Agency (ECHA) 'Guidance on requirements for substances in articles' posted at this URL: <https://echa.europa.eu/guidance-documents/guidance-on-reach>

Compatible Parts

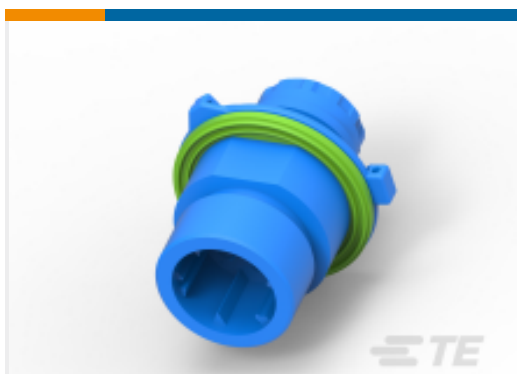


Also in the Series | [MEAS PCA](#)



LVDT Sensors(6)

Customers Also Bought

TE Part #1-1703841-1
2POS, TAB 2.8X0.8, TAB HSG, ASSY,TE Part #DP86-300D
300 PSID MV DIFFERENTIAL
PRESSURE SENSORTE Part #86-100A-C
100 PSIA CABLE CONN MV
PRESSURE SENSORTE Part #5-747909-2
15 Rcpt Solder Cup, Gold FlashTE Part #1-1718230-1
1,5MM PIN HSG 5-7 POS ASSYTE Part #K1060283
Relay 29-013-12TE Part #GA10K3A11B
DISCRETE 10K OHMS, +/-0.2C FROM
0C TO 70CTE Part #2454982-1
ADE Next Gen 02 Pos. THT TUTE Part #4-1393483-7
V42254A1115C209=SUB D STIFTLITE Part #10213124-00
PRESS XDCR M5256-000002-100BG

Documents

CAD Files

[3D PDF](#)

[3D](#)

Customer View Model

[ENG_CVM_CVM_02350531-000_E.2d_dxf.zip](#)

English

Customer View Model

[ENG_CVM_CVM_02350531-000_E.3d_igs.zip](#)



English

Customer View Model

[ENG_CVM_CVM_02350531-000_E.3d_stp.zip](#)

English

By downloading the CAD file I accept and agree to the [Terms and Conditions](#) of use.

Datasheets & Catalog Pages

AC Operated Gage Heads

English