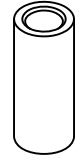
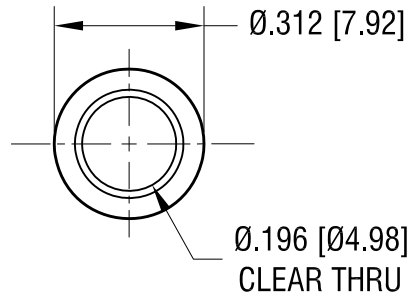


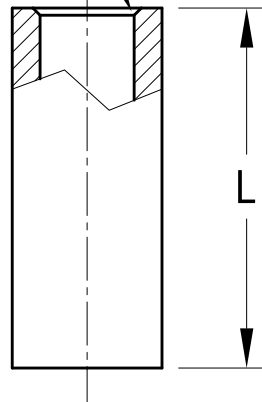
THIS DOCUMENT IS THE PROPERTY OF
KEYSTONE ELECTRONICS CORP. AND
SHALL NOT BE REPRODUCED, DISTRIBUTED
OR USED AS A BASIS FOR MANUFACTURE
WITHOUT PRIOR WRITTEN PERMISSION
FROM KEYSTONE ELECTRONICS CORP.

ACTUAL SIZE



PART 4265

CHAMFER (2) PLS



PART NO.	'L' DIM.
4261	.250 [6.35]
4262	.375 [9.52]
4263	.500 [12.70]
4264	.625 [15.88]
4265	.750 [19.05]
4266	.875 [22.23]
4267	1.000 [25.4]
4268	1.500 [38.10]
4269	2.000 [50.80]

KEYSTONE ELECTRONICS CORP.

www.keyelco.com • NEW HYDE PARK, NY 11040 • Tel (516) 328-7500

PART NAME

CLEAR THRU-HOLE SPACER

MATERIAL

LEAD FREE ALUMINUM

FINISH

CLEAR IRIDITE

DRN BY

BOONE

DATE

8.10.06

APP'D

RH

SCALE

3X

10.13.23 CHANGE AS PER ECN 23-201

A

TOLERANCES

INCH [MM]

DECIMAL ± .005 [± 0.13]

ANGULAR ± 1°
UNLESS OTHERWISE SPECIFIED

CODE

C

DWG NO.

4261 - 4269

DATE

DESCRIPTION

REV.