

61366-1 ✓ ACTIVE

MATE-N-LOK | Commercial MATE-N-LOK

TE Internal #: 61366-1

Pin Contact, Tin, Locking Lance Contact Retention, 22 – 18 AWG

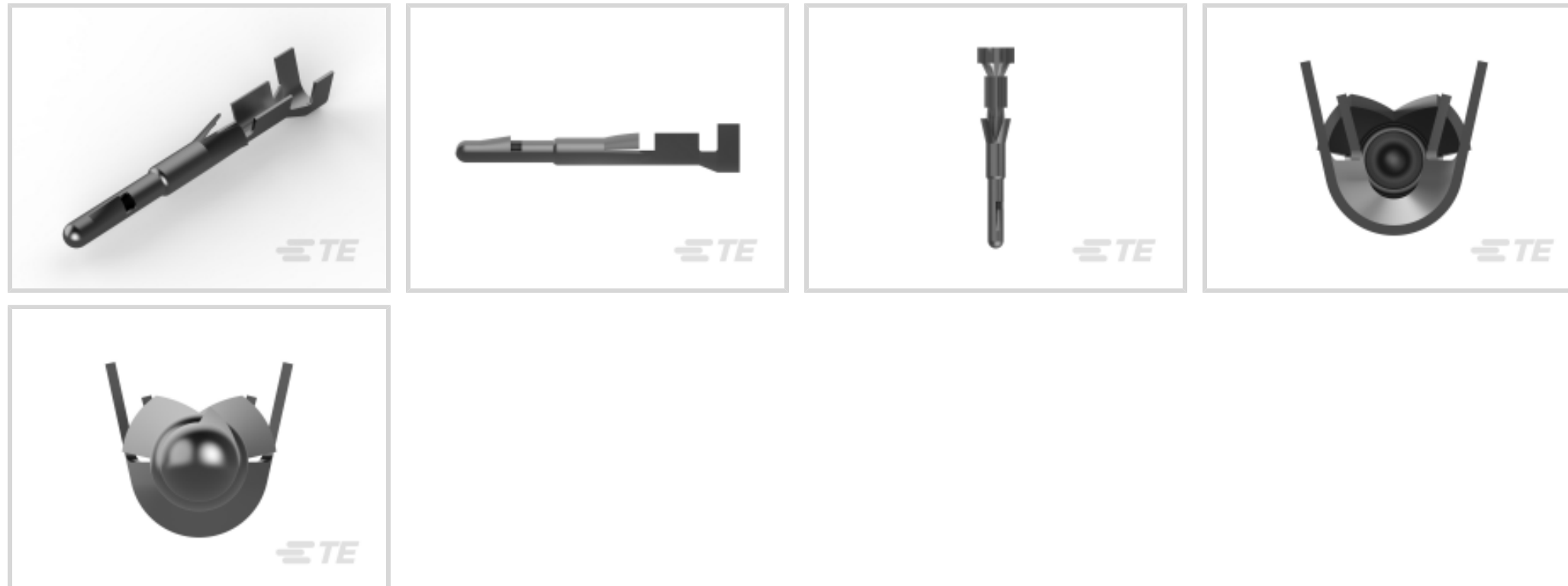
Wire Size, .33 – .82 mm² Wire Size, Crimp, Brass, Power,

Commercial MATE-N-LOK

[View on TE.com >](#)



Connectors > Contacts > Connector Contacts



Contact Type: **Pin**

Contact Mating Area Plating Material: **Tin**

Wire Contact Termination Area Plating Material: **Pre-Tin**

Contact Retention Within Housing: **With**

Contact Retention Type Within Housing: **Locking Lance**

Features

Product Type Features

Discrete Wire Type	Stranded
--------------------	----------

Contact Features

Mating Pin Diameter	1.52 mm[.06 in]
---------------------	-----------------

Wire Contact Termination Area Plating Thickness	3.3 μm[130 μin]
---	-----------------

	3.302 μin
--	-----------

Contact Orientation	Straight
---------------------	----------

Contact Type	Pin
--------------	-----

Contact Mating Area Plating Material	Tin
--------------------------------------	-----

Wire Contact Termination Area Plating Material	Pre-Tin
--	---------

Contact Retention Within Housing	With
----------------------------------	------

Contact Base Material	Brass
-----------------------	-------

Termination Features

Termination Method to Wire & Cable	Crimp
------------------------------------	-------

Product Terminates To	Wire & Cable
-----------------------	--------------



Mechanical Attachment

Wire Insulation Support	Without
Contact Retention Type Within Housing	Locking Lance

Dimensions

Compatible Insulation Diameter Range	1.52 – 2.79 mm [.06 – .109 in]
Wire Size	.33 – .82 mm ²

Operation/Application

Circuit Application	Power
---------------------	-------

Packaging Features

Packaging Quantity	7500
Packaging Method	Reel

Product Compliance

[For compliance documentation, visit the product page on TE.com>](#)

EU RoHS Directive 2011/65/EU	Compliant
EU ELV Directive 2000/53/EC	Compliant
China RoHS 2 Directive MIIT Order No 32, 2016	No Restricted Materials Above Threshold
EU REACH Regulation (EC) No. 1907/2006	Current ECHA Candidate List: JUNE 2024 (241) Candidate List Declared Against: JUNE 2024 (241) Does not contain REACH SVHC
Halogen Content	Low Halogen - Br, Cl, F, I < 900 ppm per homogenous material. Also BFR/CFR/PVC Free
Solder Process Capability	Pin-in-Paste capable to 260°C

Product Compliance Disclaimer

This information is provided based on reasonable inquiry of our suppliers and represents our current actual knowledge based on the information they provided. This information is subject to change. The part numbers that TE has identified as EU RoHS compliant have a maximum concentration of 0.1% by weight in homogenous materials for lead, hexavalent chromium, mercury, PBB, PBDE, DBP, BBP, DEHP, DIBP, and 0.01% for cadmium, or qualify for an exemption to these limits as defined in the Annexes of Directive 2011/65/EU (RoHS2). Finished electrical and electronic equipment products will be CE marked as required by Directive 2011/65/EU. Components may not be CE marked. Additionally, the part numbers that TE has identified as EU ELV compliant have a maximum concentration of 0.1% by weight in homogenous materials for lead, hexavalent chromium, and mercury, and 0.01% for cadmium, or qualify for an exemption to these limits as defined in the Annexes of Directive 2000/53/EC (ELV). Regarding the REACH Regulation, the information TE provides on SVHC in articles for this part number is based on the latest European Chemicals Agency (ECHA) 'Guidance on requirements for substances in articles' posted at this URL: <https://echa.europa.eu/guidance-documents/guidance-on-reach>

Compatible Parts



TE Part # 1-480284-0
08P CMNL CAP HSG M/M NATL



TE Part # 1-480277-0
09P CMNL CAP HSG P/M NATL



TE Part # 1-480276-0
06P CMNL CAP HSG P/M NATL



TE Part # 1-480439-0
16P CMNL CAP HSG M/M NATL



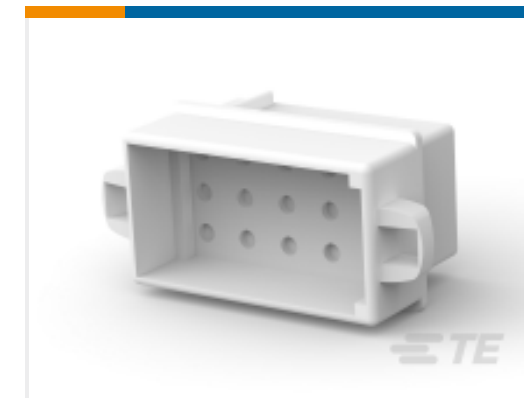
TE Part # 1-480345-0
08P CMNL CAP HSG F/H NATL



TE Part # 1-480340-0
06P CMNL CAP HSG F/H NATL



TE Part # 1-480278-0
12P CMNL CAP HSG P/M NATL



TE Part # 1-480324-0
15P CMNL CAP HSG P/M NATL



TE Part # 170924-1
MNL 2 POS NATURAL PIN HSG



TE Part # 1-480426-0
04P CMNL CAP HSG F/H NATL



TE Part # 1-480305-0
03P CMNL CAP HSG F/H NATL



TE Part # 1-480498-1
02P CMNL CAP HSG F/H BLK



TE Part # 1-480319-9
02P CMNL CAP HSG F/H BLK



TE Part # 1-480319-0
02P CMNL CAP HSG NATL



TE Part # 794048-1
08P CMNL CAP HSG D/L



TE Part # 1-480350-0
01P CMNL CAP HSG F/H NATL



TE Part # 1-480351-0
01P CMNL CAP HSG NATL



TE Part # 925075-6
4W CIRCULAR MATE-N-LOK PIN HSG NAT

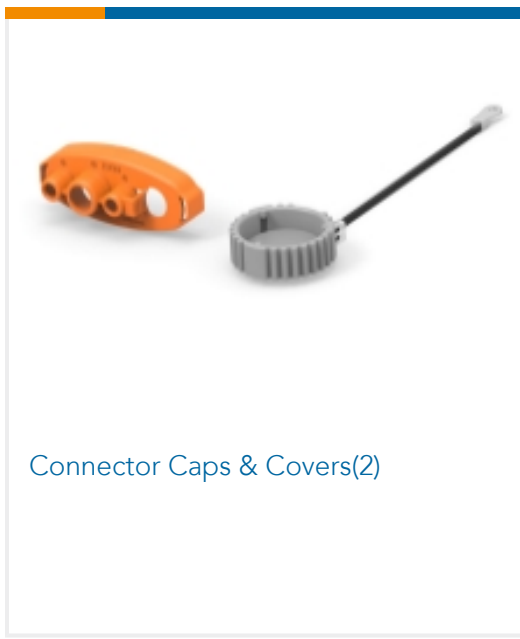


TE Part # 1-480286-0
10P CMNL CAP HSG M/M NATL

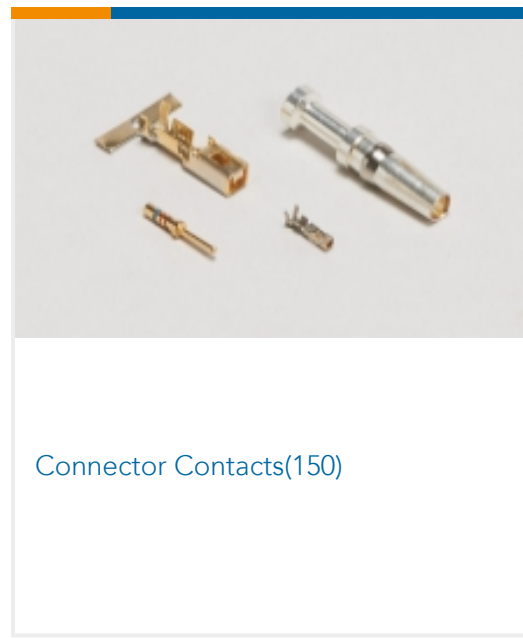


TE Part # 1-480339-0
10P CMNL CAP HSG F/H NATL

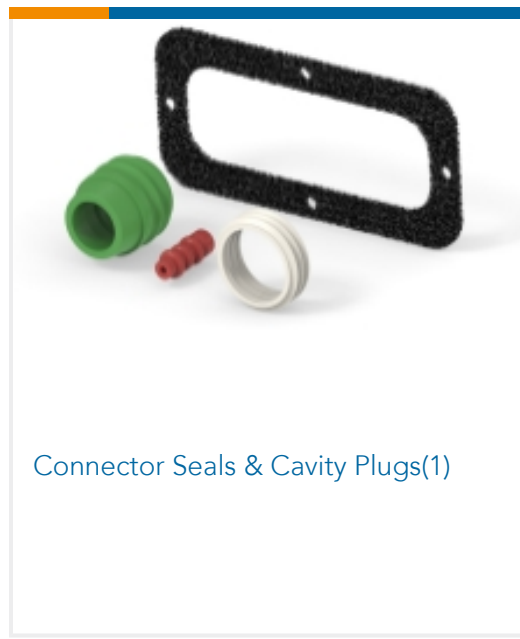
Also in the Series | **Commercial MATE-N-LOK**



Connector Caps & Covers(2)



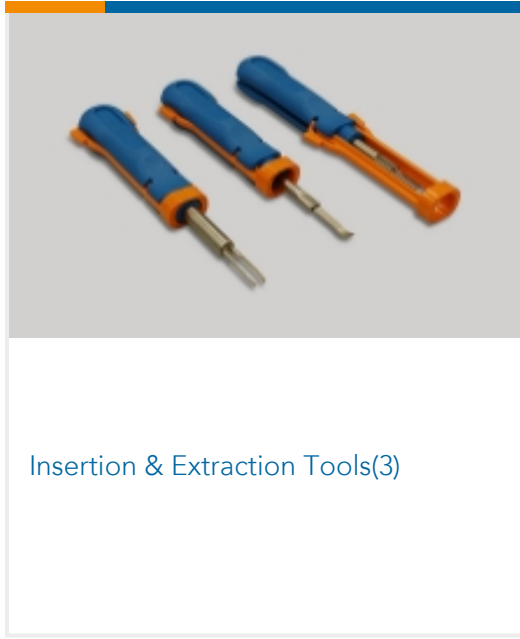
Connector Contacts(150)



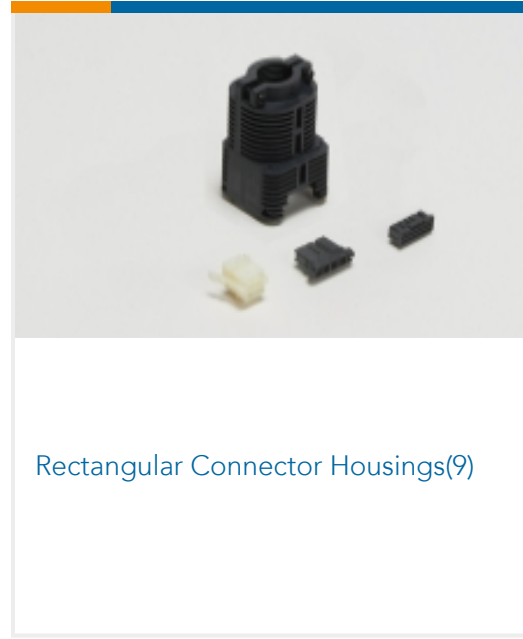
Connector Seals & Cavity Plugs(1)



Crimp Wire Pins, Tabs & Ferrules(2)



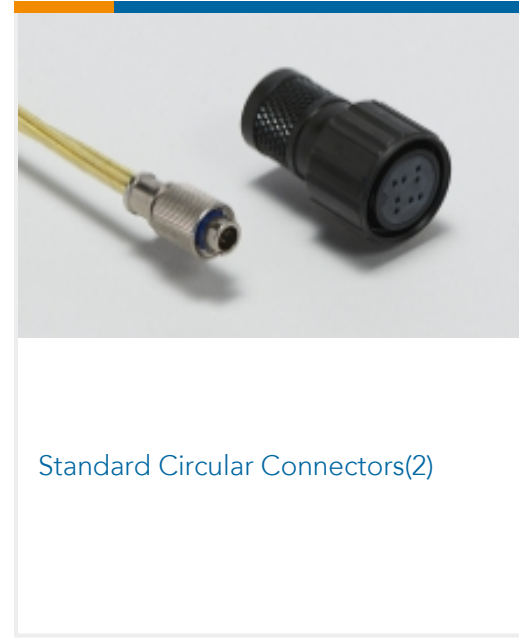
Insertion & Extraction Tools(3)



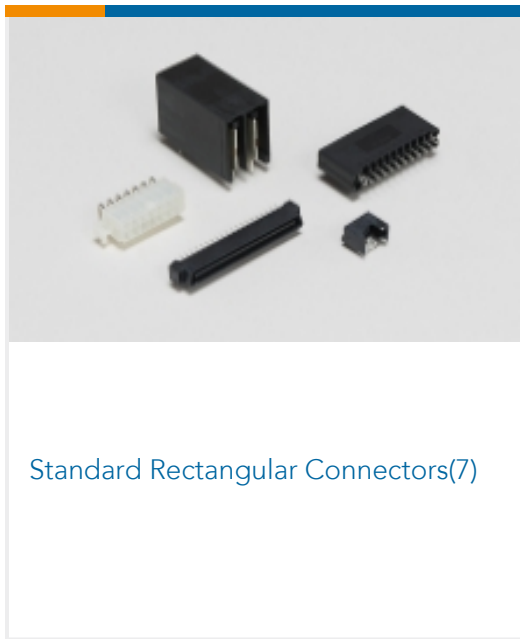
Rectangular Connector Housings(9)



Rectangular Power Connectors(166)



Standard Circular Connectors(2)



Standard Rectangular Connectors(7)

Customers Also Bought



TE Part #DRBF-1A
FLANGE, MOUNT, 102/128P, BLK, A



TE Part #DT04-12PA-B016
DEUTSCH DT Receptacle Connectors



TE Part #HDP24-24-19PE
REC, 19P, BLK, E, 12/16, P



TE Part #2236721-1
ADAPTER, FOR TAB HOUSING, ASSY



TE Part #DT06-08SA-P012
DEUTSCH DT Plug Connectors



TE Part #1062-12-0222
SOC, SF, SIZE 12, 10, NI/NI



TE Part #2292906-2
2POS, MCON 1.2, REC HSG ASSY, SLD, COD B

Documents



Product Drawings

AUTO MNL PIN PTPBR

English

CAD Files

3D PDF

3D

Customer View Model

[ENG_CVM_CVM_61366-1_AE.2d_dxf.zip](#)

English

Customer View Model

[ENG_CVM_CVM_61366-1_AE.3d_igs.zip](#)

English

Customer View Model

[ENG_CVM_CVM_61366-1_AE.3d_stp.zip](#)

English

3D PDF

English

Customer View Model

[ENG_CVM_61366-1_V.2d_dxf.zip](#)

English

Customer View Model

[ENG_CVM_61366-1_V.3d_igs.zip](#)

English

Customer View Model

[ENG_CVM_61366-1_V.3d_stp.zip](#)

English

By downloading the CAD file I accept and agree to the [Terms and Conditions](#) of use.

Product Specifications

Application Specification

English