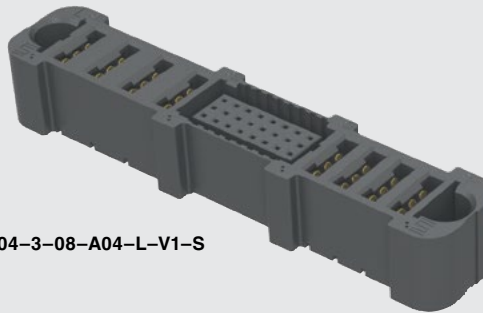




**POWER™ EXTreme**  
**STRIP Ten60**

ET60S-D04-3-08-A04-L-V1-S



# EXTreme Ten60Power™ SOCKET

Mates with:  
ET60T

## SPECIFICATIONS

For complete specifications and recommended PCB layouts see [www.samtec.com?ET60S](http://www.samtec.com?ET60S)

**Insulator Material:**

Black LCP

**Terminal Material:**

Signal: Copper Alloy

Power: Copper Alloy

**Plating:**

Au or Sn over

50 μm (1.27 μm) Ni

**Current Rating:**

Power: 60 A max per blade

(2 pins powered)

Signal: 2.8 A max

(6 pins powered)

**Operating Temp Range:**

-40 °C to +105 °C

**Voltage Rating:**

250 VAC max

**RoHS Compliant:**

Yes

## PROCESSING

**Lead-Free Solderable:**

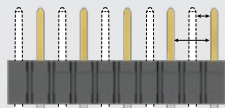
Yes

## RECOGNITIONS

For complete scope of recognitions see [www.samtec.com/quality](http://www.samtec.com/quality)



## CREEPAGE AND CLEARANCE



Selectively loading contacts achieves customer specific creepage and clearance requirements. Contact [asp@samtec.com](mailto:asp@samtec.com)

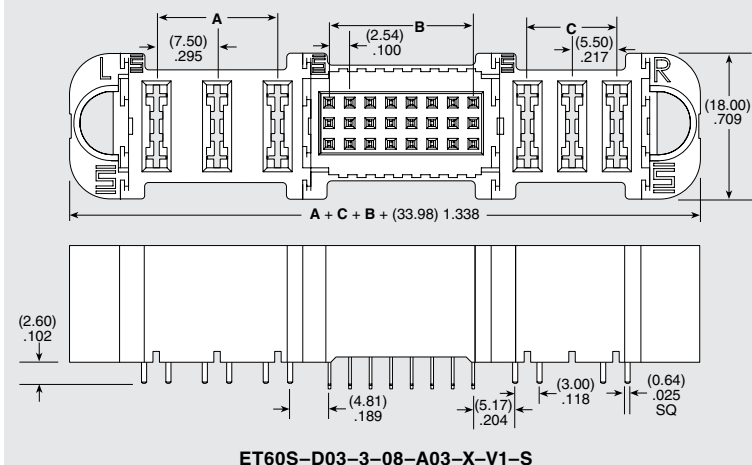
**Notes:**

Some lengths, styles and options are non-standard, non-returnable.

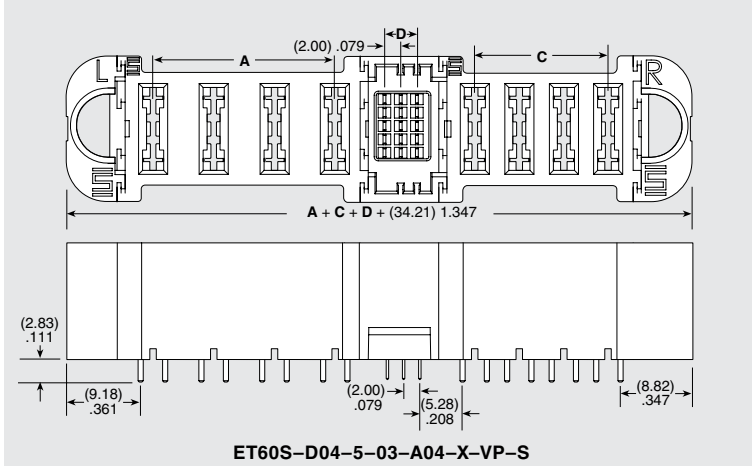
EXTreme Ten60Power™ is a trademark of Molex Incorporated and is dual sourced by Molex®

ET60S	POWER OPTION (RIGHT)	ROWS	SIGNAL POSITIONS PER ROW
-AXX = AC Power Positions (-02, -03, -04, -05, -06 positions only)	-DXX = DC Power Positions (-02, -03, -04, -05, -06, -07, -08, -09, -10 positions only)	-0 = No Signal	-00 = No Signal
-SXX* = Split Power	-000 = No Power	-3 = 3 Rows	-08 = 3 Row only
		-5 = 5 Rows	-01, -02, -03, -04, -05, -06, -07, -08 = 5 Row only

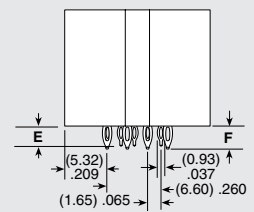
Note: -SXX\* -T\* are Preliminary



POWER POSITIONS (LEFT)	POWER POSITIONS (RIGHT)	A AC POWER	C DC POWER
-02	-02	(7.50) .295	(5.50) .217
-03	-03	(15.00) .591	(11.00) .433
-04	-04	(22.50) .886	(16.50) .650
-05	-05	(30.00) 1.181	(22.50) .886
-06	-06	(37.50) 1.476	(27.50) 1.083
-07	-07	N/A	(33.00) 1.299
-08	-08	N/A	(38.50) 1.516
-09	-09	N/A	(44.00) 1.732
-10	-10	N/A	(49.50) 1.949

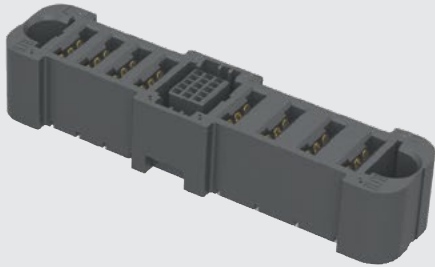


TAIL	3 ROWS		5 ROWS	
	E	F	E	F
-VP	(3.28) .129	(2.83) .111	(2.83) .111	(2.50) .098
-V1		(2.60) .102		N/A

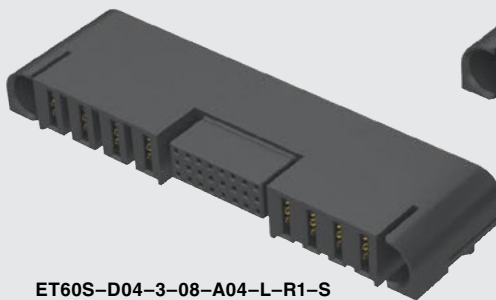


Due to technical progress, all designs, specifications and components are subject to change without notice.

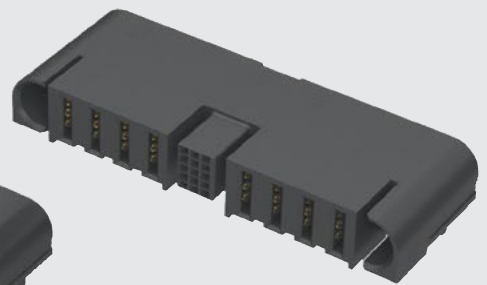
ET60S-A04-5-03-D04-L-VP-S



ET60S-D04-3-08-A04-L-R1-S



ET60S-D04-5-03-A04-S-R1-S



**ET60S SERIES**

**POWER OPTION (LEFT)**

**-AXX**

= AC Power Positions  
(-02, -03, -04, -05, -06 positions only)

**-DXX**

= DC Power Positions  
(-02, -03, -04, -05, -06, -07, -08, -09, -10 positions only)

**-SXX\***

= Split Power

**-000**

= No Power

Note:  
-SXX\* -T\* are Preliminary

**PLATING**

**-L**

= 10 μ" (0.25 μm) Gold on contact,  
Matte Tin on tail  
(Not available for 5 rows)

**-S**

= 30 μ" (0.76 μm) Gold on contact,  
Matte Tin on tail

**TAIL**

**-VP**

= Vertical Press-fit

**-V1**

= Vertical through-hole  
(Use with (1.60 mm) .062" thick card)  
(-0 and -3 Row only)

**-R1**

= Right-angle through-hole  
(Use with (1.60 mm) .062" thick card)

**GUIDE POST**

(Required callout)

**-S**

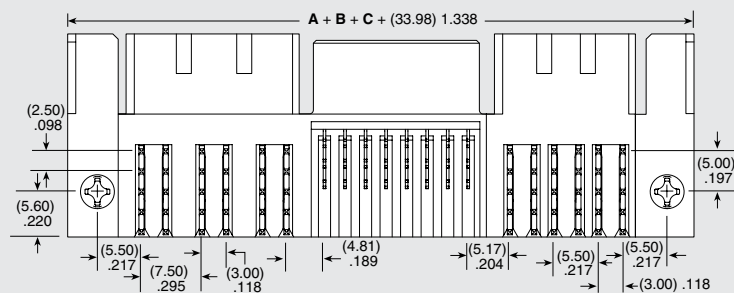
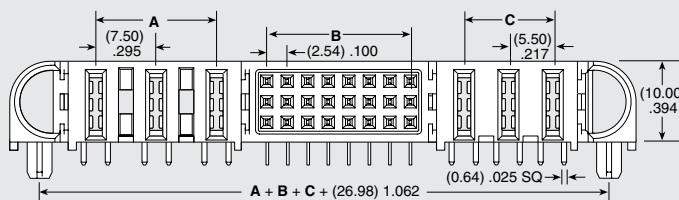
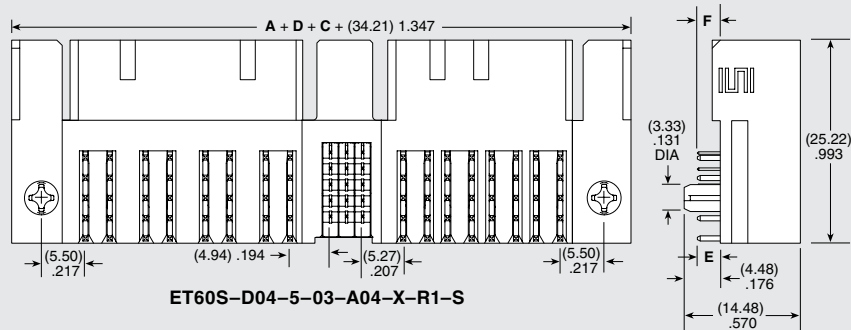
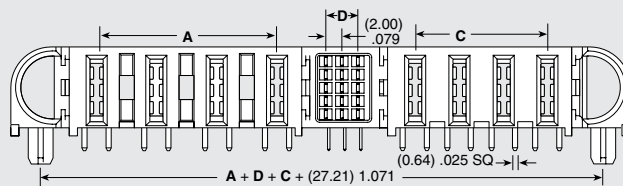
= Side Guide Post

**-T\***

= Top Guide Post

SIGNAL POSITIONS PER ROW (3 Row)	B	SIGNAL POSITIONS PER ROW (5 Row)	D
-08	(17.78) .700	-01	N/A
		-02	(2.00) .079
		-03	(4.00) .157
		-04	(6.00) .236
		-05	(8.00) .315
		-06	(10.00) .394
		-07	(12.00) .472
		-08	(14.00) .551

TAIL	E	F
-R1	(2.84) .112	



ET60S-D03-3-08-A03-X-R1-S

Due to technical progress, all designs, specifications and components are subject to change without notice.

[WWW.SAMTEC.COM](http://WWW.SAMTEC.COM)

All parts within this catalog are built to Samtec's specifications.  
Customer specific requirements must be approved by Samtec and identified in a Samtec customer-specific drawing to apply.

# Mouser Electronics

Authorized Distributor

Click to View Pricing, Inventory, Delivery & Lifecycle Information:

## Samtec:

[ET60S-D02-3-08-000-L-R1-S](#) [ET60S-D02-3-08-D02-S-VP-S](#) [ET60S-D04-0-00-D04-L-V1-S](#) [ET60S-000-3-08-000-S-VP-S](#) [ET60S-D06-3-08-D06-S-V1-S](#) [ET60S-D02-3-08-000-L-VP-S](#) [ET60S-000-3-08-000-S-V1-S](#) [ET60S-000-3-08-D03-L-R1-S](#) [ET60S-D02-3-08-000-L-V1-S](#) [ET60S-D02-3-08-000-S-V1-S](#) [ET60S-D02-3-08-D02-L-R1-S](#) [ET60S-D06-3-08-000-L-R1-S](#) [ET60S-000-3-08-000-L-VP-S](#) [ET60S-000-3-08-D04-L-R1-S](#) [ET60S-D02-0-00-D02-L-VP-S](#) [ET60S-D02-3-08-D04-L-V1-S](#) [ET60S-D03-0-00-D03-L-VP-S](#) [ET60S-D04-0-00-D04-L-VP-S](#) [ET60S-D04-3-08-D02-S-VP-S](#) [ET60S-D04-3-08-D04-L-V1-S](#) [ET60S-D06-0-00-000-L-R1-S](#) [ET60S-D06-3-08-000-S-V1-S](#) [ET60S-000-3-08-D02-L-V1-S](#) [ET60S-000-3-08-D03-L-VP-S](#) [ET60S-D02-3-08-000-S-R1-S](#) [ET60S-D03-3-08-000-L-R1-S](#) [ET60S-D03-3-08-000-S-V1-S](#) [ET60S-D03-3-08-D03-L-V1-S](#) [ET60S-D04-3-08-000-L-R1-S](#) [ET60S-D04-3-08-000-L-V1-S](#) [ET60S-D06-0-00-D06-L-R1-S](#) [ET60S-D06-0-00-D06-L-V1-S](#) [ET60S-D06-3-08-D02-L-VP-S](#) [ET60S-D06-3-08-D06-L-VP-S](#) [ET60S-D03-0-00-D02-L-R1-S](#) [ET60S-D03-3-08-D03-L-VP-S](#) [ET60S-000-0-00-D06-L-R1-S](#) [ET60S-000-3-08-D04-L-VP-S](#) [ET60S-000-3-08-D06-L-V1-S](#) [ET60S-D02-0-00-000-S-VP-S](#) [ET60S-D02-3-08-D02-L-VP-S](#) [ET60S-D03-0-00-D03-L-R1-S](#) [ET60S-D03-3-08-D03-S-VP-S](#) [ET60S-D04-0-00-D04-S-V1-S](#) [ET60S-D06-0-00-D02-L-R1-S](#) [ET60S-D06-3-08-D02-L-V1-S](#) [ET60S-D06-3-08-D06-S-VP-S](#) [ET60S-000-3-08-D04-L-V1-S](#) [ET60S-D03-3-08-D03-L-R1-S](#) [ET60S-D04-3-08-000-L-VP-S](#) [ET60S-D04-3-08-000-S-R1-S](#) [ET60S-D04-3-08-D02-L-R1-S](#) [ET60S-D06-3-08-000-L-V1-S](#) [ET60S-000-3-08-D06-L-R1-S](#) [ET60S-D02-3-08-D02-S-V1-S](#) [ET60S-D03-3-08-D03-S-V1-S](#) [ET60S-D04-0-00-D04-L-R1-S](#) [ET60S-D06-0-00-000-L-V1-S](#) [ET60S-D06-3-08-000-L-VP-S](#) [ET60S-000-0-00-D02-L-R1-S](#) [ET60S-D02-0-00-000-L-R1-S](#) [ET60S-D02-0-00-000-L-VP-S](#) [ET60S-D02-3-08-D06-L-VP-S](#) [ET60S-D03-3-08-D06-L-V1-S](#) [ET60S-D04-0-00-000-L-V1-S](#) [ET60S-D04-3-08-D04-S-V1-S](#) [ET60S-000-0-00-D02-L-VP-S](#) [ET60S-D02-0-00-000-S-V1-S](#) [ET60S-D03-0-00-000-L-VP-S](#) [ET60S-D04-0-00-000-L-R1-S](#) [ET60S-D04-3-08-D06-S-VP-S](#) [ET60S-000-0-00-D04-L-R1-S](#) [ET60S-D02-0-00-000-L-V1-S](#) [ET60S-D03-0-00-000-L-R1-S](#) [ET60S-D03-0-00-000-L-V1-S](#) [ET60S-D04-0-00-000-L-VP-S](#) [ET60S-D04-3-08-D04-L-VP-S](#) [ET60S-D04-3-08-D04-S-R1-S](#) [ET60S-D06-3-08-D04-L-V1-S](#) [ET60S-D06-3-08-D04-L-VP-S](#) [ET60S-000-0-00-D04-L-VP-S](#) [ET60S-000-3-08-000-L-R1-S](#) [ET60S-D03-0-00-D03-L-V1-S](#) [ET60S-D03-3-08-D04-L-V1-S](#) [ET60S-D04-0-00-D04-S-R1-S](#) [ET60S-D06-3-08-000-S-VP-S](#) [ET60S-D02-0-00-D02-L-R1-S](#) [ET60S-D02-3-08-D02-L-V1-S](#) [ET60S-D03-0-00-D02-S-V1-S](#) [ET60S-D04-3-08-D02-L-V1-S](#) [ET60S-D04-3-08-D04-L-R1-S](#) [ET60S-D06-0-00-D02-L-VP-S](#) [ET60S-D06-3-08-D06-L-R1-S](#) [ET60S-D06-3-08-D06-L-V1-S](#) [ET60S-D02-5-01-D02-S-VP-S](#) [ET60T-D02-5-01-D02-S-R1-S](#) [ET60S-D02-0-00-D02-L-V1-S](#) [ET60S-D02-0-00-D02-S-V1-S](#) [ET60S-D02-0-00-D02-S-VP-S](#) [ET60S-D02-3-08-D06-L-V1-S](#)