



PennEngineering
Corporate Headquarters – Danboro, PA

5190 Old Easton Rd.

Danboro, PA 18916

Phone: 215-766-8853

Toll-Free Phone: 1-800-237-4736 (U.S. only)

Email: info@pemnet.com

Website: www.pemnet.com

Part # CLS-0420-3, Self-Clinching Nuts - Types S, SS, CLS, CLSS, SP - Unified

Type S, SS, CLS, and CLSS nuts provide load-bearing threads in thin sheets with high pushout and torque-out resistance.

Type SP, PEM 300® nuts provide strong load-bearing threads in stainless steel sheets as thin as .030".

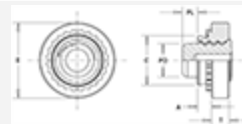
Types S / SS are recommended for use in steel or aluminum sheets HRB (Rockwell "B" scale) 80 or less and HB (Hardness Brinell) 150 or less.

Type SP is recommended for use in stainless steel sheets HRB (Rockwell "B" scale) 90 or less and HB (Hardness Brinell) 185 or less.



Specifications

Thread Size	.250-20 (1/4-20)
Thread Code	0420
Shank Code	3
A (Shank) Max.	.120 in
Rec. Min. Sheet Thickness¹	.125 in
Hole Size in Sheet + .003 - .000	.344 in
C Max.	.343 in
E ± .010	.440 in
T ± .010	.170 in
Min. Dist. Hole C/L to Edge²	.34 in



For Use in Sheet Hardness³	HRB 70 / HB 125 or Less
Thread Specification	Internal, ASME B1.1, 2B
Fastener Material	300 Series Stainless Steel
Standard Finish	Passivated per ASTM A380 and/or tested
CAD Supplier	PennEngineering® (PEM®)

¹ For maximum performance, we recommend that you use the maximum shank length for your sheet thickness.

² To minimize sheet distortion and maximize product performance, use a centerline-to-edge value greater or equal to the value specified.

³ HRB - Hardness Rockwell "B" Scale. HB - Hardness Brinell.