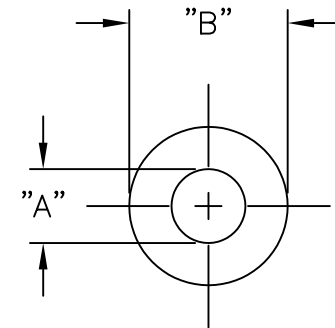
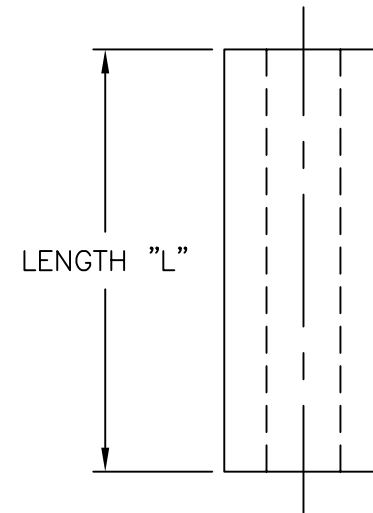


LENGTH "L"	PART NO.				
	FOR #4 SCREW (M-2.5)	FOR #6 SCREW (M-3)	FOR #8 SCREW (M-4)	FOR #8 SCREW (M-4)	
	"A"=.120±.007 (3.0±0.18) "B"=1/4±.007 (6.4±0.18)	"A"=.147±.007 (3.7±0.18) "B"=1/4±.007 (6.4±0.18)	"A"=.175±.007 (4.4±0.18) "B"=1/4±.007 (6.4±0.18)	"A"=.175±.007 (4.4±0.18) "B"=3/8±.007 (9.5±0.18)	
1/4 (6.4)	±.010	SS4-2	SS6-2	SS8-2	SS8-2L
3/8 (9.5)	(0.25)	SS4-3	SS6-3	SS8-3	SS8-3L
1/2 (12.7)		SS4-4	SS6-4	SS8-4	SS8-4L
5/8 (15.9)	±.015 (0.38)	SS4-5	SS6-5	SS8-5	SS8-5L
3/4 (19.1)		SS4-6	SS6-6	SS8-6	SS8-6L
1 (25.4)		SS4-8	SS6-8	SS8-8	SS8-8L
1-1/4 (31.8)		SS4-10	SS6-10	SS8-10	SS8-10L
1-1/2 (38.1)	±.020 (0.51)	SS4-12	SS6-12	SS8-12	SS8-12L
1-3/4 (44.5)		SS4-14	SS6-14	SS8-14	SS8-14L
2 (50.8)		SS4-16	SS6-16	SS8-16	SS8-16L
2-1/4 (57.2)		-	-	SS8-18	SS8-18L
2-1/2 (63.5)	(0.51)	-	-	SS8-20	SS8-20L
2-3/4 (69.9)		-	-	SS8-22	SS8-22L
3 (76.2)		-	-	SS8-24	SS8-24L



LENGTH "L"	TOL.	FOR #10 SCREW (M-4.5)	FOR 1/4 BOLT (M-6)	FOR 3/8 BOLT (M-9)
		"A"=.200±.010 (5.1±0.25) "B"=3/8±.010 (9.5±0.25)	"A"=.266±.010 (6.8±0.25) "B"=1/2±.010 (12.7±0.25)	"A"=.397±.010 (10.1±0.25) "B"=1/2±.010 (12.7±0.25)
1/4 (6.4)	±.010 (0.25)	SS10-2	SS1/4-2	SS3/8-2
3/8 (9.5)		SS10-3	-	SS3/8-3
1/2 (12.7)	±.015 (0.38)	SS10-4	SS1/4-4	SS3/8-4
5/8 (15.9)		SS10-5	-	-
3/4 (19.1)		SS10-6	SS1/4-6	SS3/8-6
1 (25.4)		SS10-8	SS1/4-8	SS3/8-8
1-1/4 (31.8)	±.020 (0.51)	SS10-10	SS1/4-10	SS3/8-10
1-1/2 (38.1)		SS10-12	SS1/4-12	SS3/8-12
1-3/4 (44.5)		SS10-14	SS1/4-14	SS3/8-14
2 (50.8)		SS10-16	SS1/4-16	SS3/8-16
2-1/4 (57.2)	(0.51)	SS10-18	SS1/4-18	SS3/8-18
2-1/2 (63.5)		SS10-20	SS1/4-20	SS3/8-20
2-3/4 (69.9)		SS10-22	SS1/4-22	SS3/8-22
3 (76.2)		SS10-24	SS1/4-24	SS3/8-24



NOTES:

- MATERIAL: PVC, RIGID (RMS-11)
COLOR: LIGHT GRAY

TITLE: ROUND SPACERS SERIES		DWG IN IN (MM)		FINAL	
E	CORRECTED METRIC CONVERSIONS	DZ 02.22.02	TOLERANCES UNLESS NOTED .XX=±.010 .XXX=±.005 FRAC=1/64 ANG=1°	FILE # SS	DWN: P.B.
D	CHANGED FILE NUMBER	SM 05.10.01		MAT'L: SEE NOTES	APP:
C	NOTE ADDED; TOLERANCES ADDED TO TABLE	PB 07.10.95		RE: RICHCO INC.	DT: 07-14-94 DT:
B	CONVERTED TO ACAD	PB 07.14.94			RICHCO INC.
A	P/N SS3/8-3 ADDED	RS 03.23.93			PO BOX 804238, CHICAGO, 60680
REV	DESCRIPTION	ENGR DATE			(773) 539-4060
			PART #		PRINT TYPE
			SEE TABLE		CA