



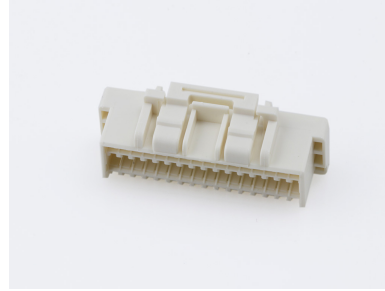
**Part Number :** [5031493200](#)

**Product Description :** CLIK-Mate Plug Housing, 1.50mm Pitch, Dual Row, Positive Lock, 32 Circuits, Natural

**Series Number :** 503149

**Status :** Active

**Product Category :** Connector Housings



---

## Documents & Resources

### Drawings

[Drawing 5031493200\\_sd.pdf](#)

### 3D Models and Design Files

[2D Drawing DXF 5031493200.dxf](#)

[2D Drawing DXF \(PDF\) 5031493200.pdf](#)

[3D Model 5031493200\\_stp.zip](#)

### Specifications

[Application Specification AS-503149-001-001.pdf](#)

[Packaging Specification SPK-503149-001-001.pdf](#)

[Product Specification 5031490000-PS-000.pdf](#)

[Product Specification 5031491000-PS-000.pdf](#)

[Product Specification 5031491001-PS-000.pdf](#)

[Product Specification 5031491002-PS-000.pdf](#)

[Product Specification 5031491003-PS-000.pdf](#)

[Product Specification PS-505406-001-001.pdf](#)

---

## Product Environment Compliance

### Compliance

GADSL/IMDS	Not Relevant
China RoHS	
EU ELV	Not Relevant
Low-Halogen Status	Not Low-Halogen per IEC 61249-2-21
REACH SVHC	Not Contained per D(2024)4144-DC (27 June 2024)
EU RoHS	Compliant per EU 2015/863

## Multiple Part Product Compliance Statements

- Eu RoHS
- REACH SVHC
- Low-Halogen

## Multiple Part Industry Compliance Documents

- IPC 1752A Class C
- IPC 1752A Class D
- Molex Product Compliance Declaration
- IEC-62474
- chemSHERPA (xml)

## EU RoHS Certificate of Compliance

---

### Part Details

#### General

Status	Active
Category	Connector Housings
Series	503149
Description	CLIK-Mate Plug Housing, 1.50mm Pitch, Dual Row, Positive Lock, 32 Circuits, Natural
Application	Signal, Wire-to-Board
Product Family	CLIK-Mate Wire-to-Board Connectors
Product Name	CLIK-Mate
UPC	884982019676

#### Agency

UL	E29179
----	--------

#### Physical

Circuits (maximum)	32
Color - Resin	Natural
Gender	Plug
Glow-Wire Capable	No
Keying to Mating Part	None
Lock to Mating Part	Yes
Material - Resin	PBT

Number of Rows	2
Packaging Type	Bag
Panel Mount	No
Pitch - Mating Interface	1.50mm
Pitch - Termination Interface	1.50mm
Polarized to Mating Part	Yes
Stackable	No
Temperature Range - Operating	-40° to +105°C

---

## Mates With / Use With

### Mates with Part(s)

Description	Part Number
1.50mm Pitch CLIK-Mate Right-Angle Dual Row PCB Receptacles	<u>213228</u>
1.50mm Pitch CLIK-Mate Right-Angle Dual Row PCB Receptacles	<u>503148</u>
1.50mm Pitch CLIK-Mate Vertical Dual Row PCB Receptacles	<u>213227</u>
1.50mm Pitch CLIK-Mate Right-Angle Dual Row PCB Receptacles	<u>503154</u>

### Use with Part(s)

Description	Part Number
Pre-Crimped Lead CLIK-Mate 1.50mm Male-to-CLIK-Mate 1.50mm Male, Tin (Sn) Plating, 300.00mm Length, 24 AWG, Black	<u>797581011</u>
1.50mm Pitch CLIK-Mate Male Crimp Terminals	<u>502579</u>
1.50mm Pitch CLIK-Mate Male Crimp Terminals	<u>503429</u>
CLIK-Mate 1.50mm Pitch Male Crimp Terminals	<u>213028</u>
CLIK-Mate 1.50mm Pitch Male Crimp Terminals	<u>213029</u>
Pre-Crimped Lead Clik-Mate Male-to-Clik-Mate Male	<u>215710</u>
Pre-Crimped Lead Clik-Mate Male-to-Pigtail	<u>215711</u>

---

---

This document was generated on Sep 19, 2024