

BMF65N340C1

N-Channel Power MOSFET

650 V, 14 A, 340 mΩ



bestirpower

Description

BMF65N340C1 is power MOSFET using bestirpower's advanced super junction technology that can realize very low on-resistance and gate charge. It will provide much high efficiency by using optimized charge coupling technology. These user friendly devices give an advantage of Low EMI to designers as well as low switching loss.

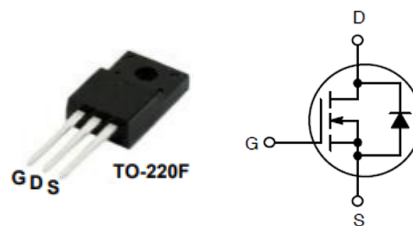
Features

$BV_{DSS} @ T_{J,max}$	I_D	$R_{DS(on),max}$	$Q_{g,typ}$
700 V	14 A	340 mΩ	20.4 nC

- Extremely low losses due to very low FOM $R_{ds(on)} \cdot Q_g$ and E_{oss} .
- Very high commutation ruggedness.

Applications

- Switch Mode Power Supply (SMPS)
- TV power & LED Lighting Power
- AC to DC Converters
- Telecom



Absolute Maximum Ratings ($T_C = 25^\circ\text{C}$ unless otherwise noted)

Symbol	Parameter	Value	Unit
V_{DSS}	Drain to Source Voltage ¹⁾	650	V
V_{GSS}	Gate to Source Voltage	± 30	V
I_D	Drain Current ²⁾	Continuous ($T_C = 25^\circ\text{C}$)	14
		Continuous ($T_C = 125^\circ\text{C}$)	7.5
I_{DM}	Drain Current	Pulsed	29.3
P_{tot}	Power Dissipation	32	W
E_{AS}	Single Pulsed Avalanche Energy ³⁾	250	mJ
I_{AR}	Repetitive Avalanche Energy	3.2	A
dv/dt	MOSFET dv/dt ruggedness	50	V/ns
	Diode Recovery dv/dt ruggedness ⁴⁾	15	
T_{STG}	Storage Temperature Range	-55 to 150	$^\circ\text{C}$
T_J	Maximum Operating Junction Temperature	150	$^\circ\text{C}$

1) Limited by T_J max. Maximum duty cycle $D=0.75$.

2) Pulse width t_p limited by T_J, max .

3) $V_{DD}=50\text{V}$, $L=50\text{mH}$, $R_G=25\Omega$, Starting $T_J=25^\circ\text{C}$.

4) $V_{DClink}=400\text{V}$; $V_{DS,peak} < V_{(BR)DSS}$; identical low side and high side switch with identical R_G .

Thermal Characteristics

Symbol	Parameter	Value	Unit
$R_{\theta JC}$	Thermal Resistance, Junction to Case, Max.	3.9	$^\circ\text{C/W}$
$R_{\theta JA}$	Thermal Resistance, Junction to Ambient, Max. *minimal footprint	62.5	

Package Marking and Ordering Information

Part Number	Top Marking	Package	Packing Method	Quantity
BMF65N340C1	BMF65N340C1	TO-220F	Tube	50 units

Electrical Characteristics (T_C = 25°C unless otherwise noted)

Symbol	Parameter	Test Conditions	Min	Typ	Max	Unit
--------	-----------	-----------------	-----	-----	-----	------

Off Characteristics

BV _{DSS}	Drain to Source Breakdown Voltage	V _{GS} = 0 V, I _D = 250μA	650	-	-	V
I _{DSS}	Zero Gate Voltage Drain Current	V _{DS} = 650 V, V _{GS} = 0 V T _J = 25°C	-	-	1	μA
		V _{DS} = 650 V, V _{GS} = 0 V T _J = 150°C	-	-	10	-
I _{GSS}	Gate-Source Leakage Current	V _{GS} = ±30 V, V _{DS} = 0 V	-	-	±100	nA

On Characteristics

V _{GS(th)}	Gate Threshold Voltage	V _{GS} = V _{DS} , I _D = 250μA	2.5	3.3	4.5	V
R _{DS(on)}	Static Drain to Source On Resistance	V _{GS} = 10 V, I _D = 4A T _J = 25°C	-	280	340	mΩ
		V _{GS} = 10 V, I _D = 4A T _J = 150°C	-	730	850	mΩ

Dynamic Characteristics

C _{iss}	Input Capacitance	V _{GS} = 0V, V _{DS} = 100V, f = 250KHz	-	781	-	pF
C _{oss}	Output Capacitance		-	30.3	-	pF
C _{rss}	Reverse Transfer Capacitance		-	1.47	-	pF
C _{o(er)}	Energy Related Output Capacitance	V _{DS} = 0V to 480V, V _{GS} = 0V, f = 1.0MHz	-	19	-	pF
Q _g	Total Gate Charge	V _{GS} = 0-10V, V _{DD} = 400V, I _D = 7A	-	20.4	-	nC
Q _{gs}	Gate to Source Charge		-	2.77	-	nC
Q _{gd}	Gate to Drain "Miller" Charge		-	5.8	-	nC
V _{plateau}	Gate plateau voltage		-	3.71	-	V
R _G	Gate Resistance	V _{GS} = 0V, f = 1.0MHz	-	3	-	Ω

Switching Characteristics

t _{d(on)}	Turn-On Delay Time	V _{GS} = 13V, V _{DD} = 400V, I _D = 7A	-	6.2	-	ns
t _r	Turn-On Rise Time		-	21	-	ns
t _{d(off)}	Turn-Off Delay Time		-	28.8	-	ns
t _f	Turn-Off Fall Time		-	22.4	-	ns

Reverse Diode Characteristics

I _{SD}	Continuous Diode Forward Current		-	-	14	A
V _{SD}	Diode Forward Voltage	V _{GS} = 0V, I _F = 7A, T _F = 25°C	-	0.846	-	V
t _{rr}	Reverse Recovery Time	V _R = 400V, I _F = 7A diF/dt = 50A/μs	-	218	-	ns
Q _{rr}	Reverse Recovery Charge		-	1.1	-	μC
I _{rm}	Reverse Recovery Current		-	10.7	-	A

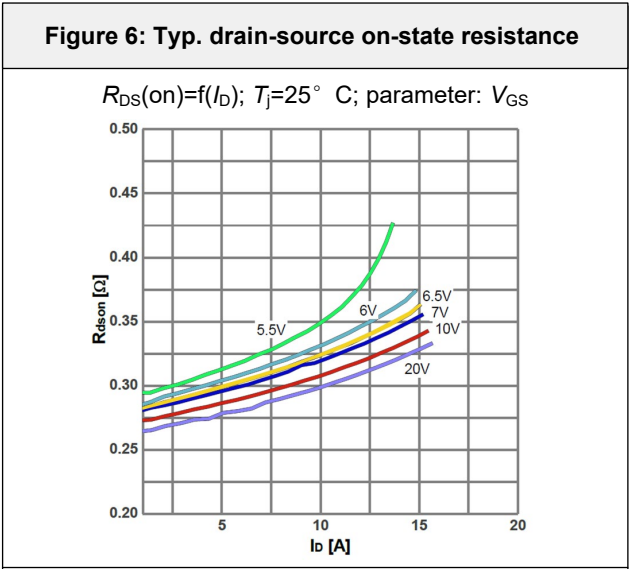
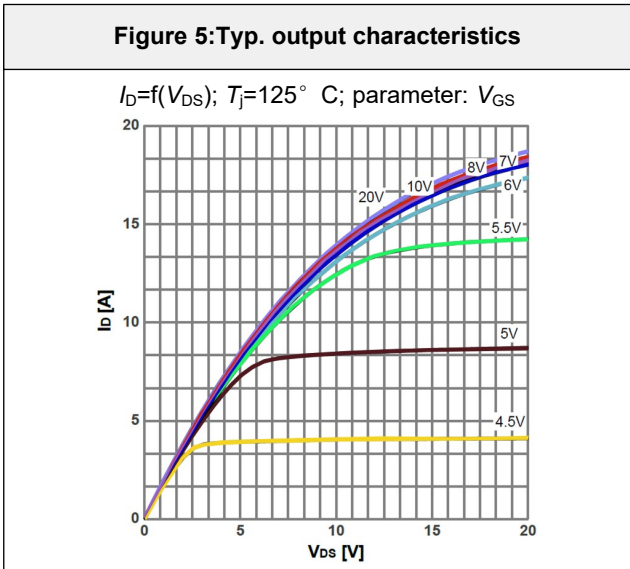
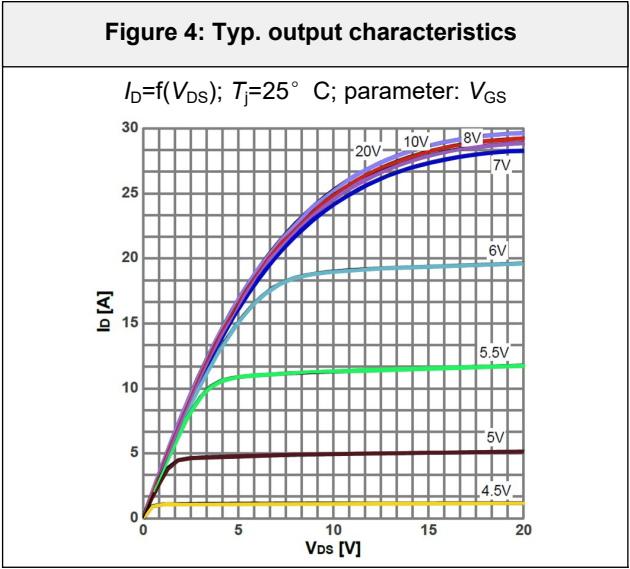
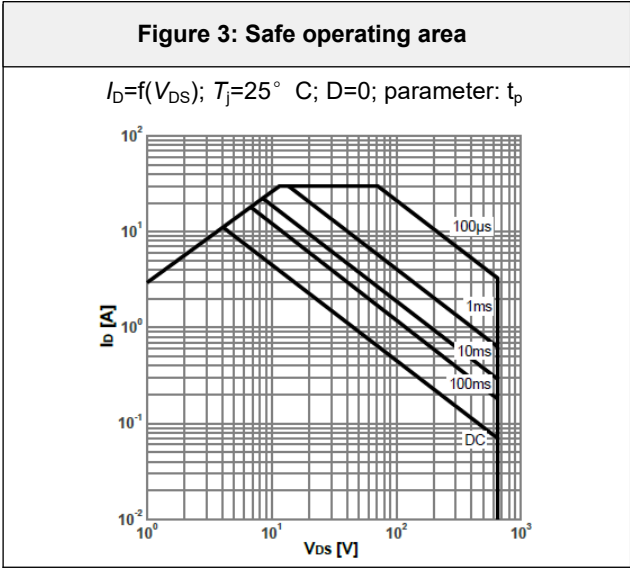
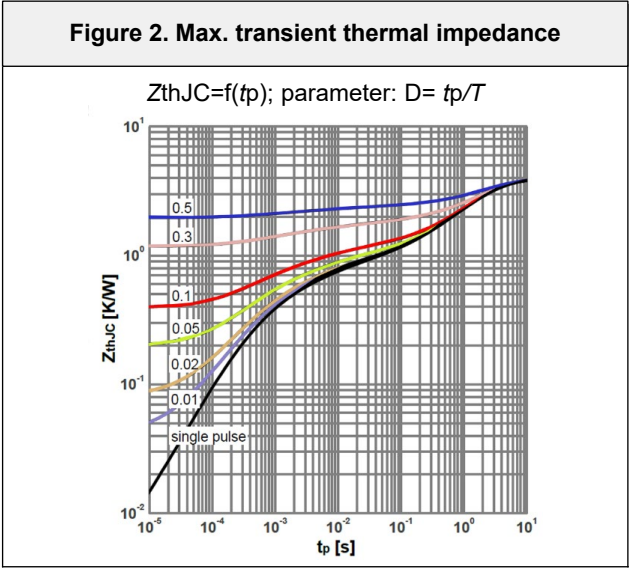
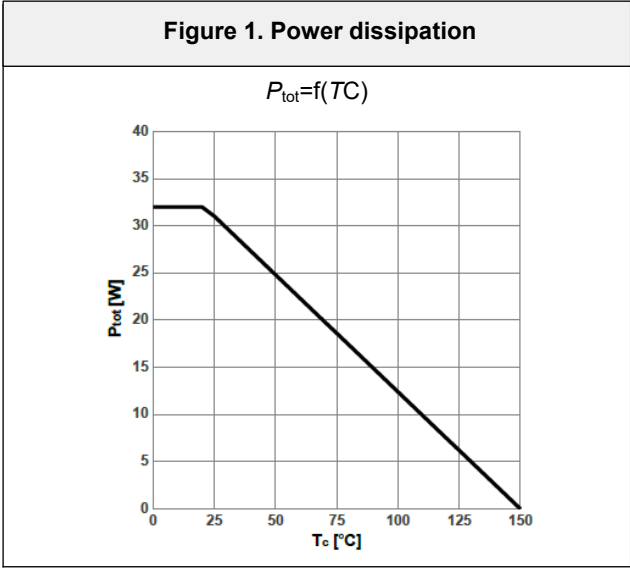


Figure 7: drain-source on-state resistance

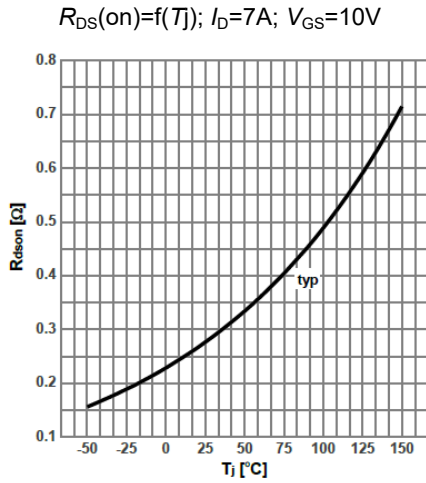


Figure 8: Typ. transfer characteristics

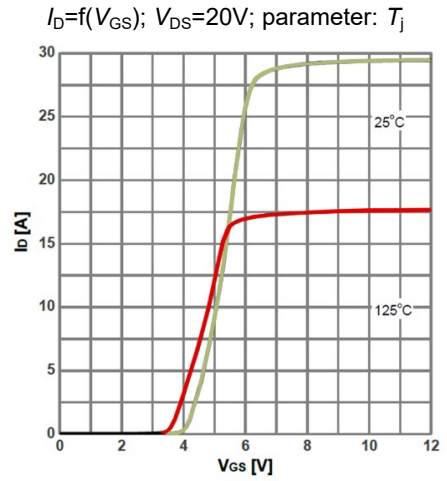


Figure 9:Typ. gate charge

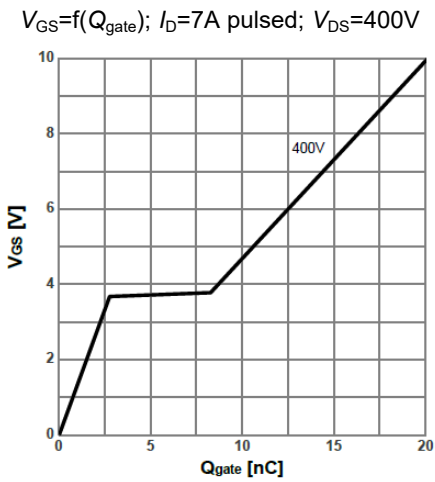


Figure 10:Forward characteristics of reverse diode

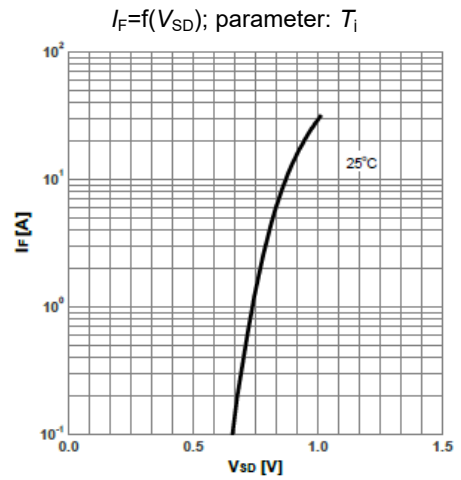


Figure 11: Drain-source breakdown voltage

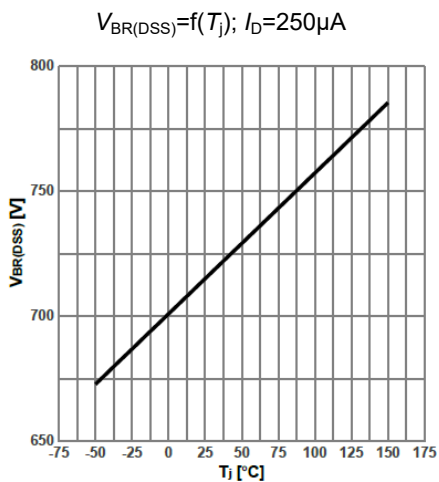


Figure 12:Typ. capacitances

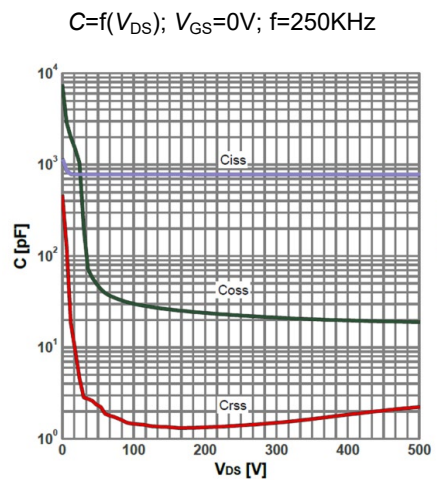
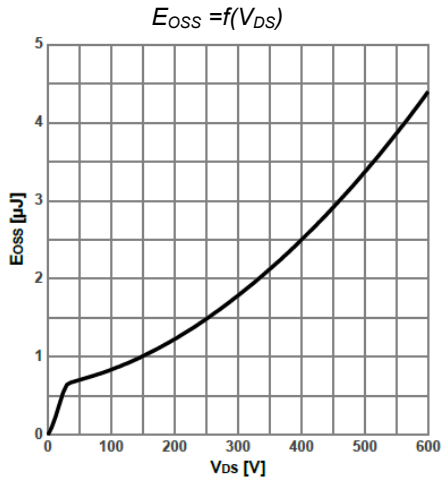


Figure 13:Typ. Coss stored energy



Test Circuits

Figure 14: Diode Characteristics

Test circuit for diode characteristics and Diode recovery waveform

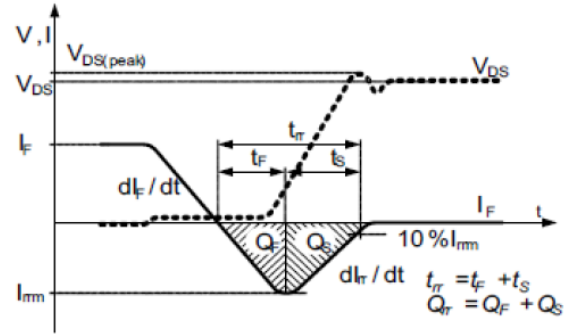
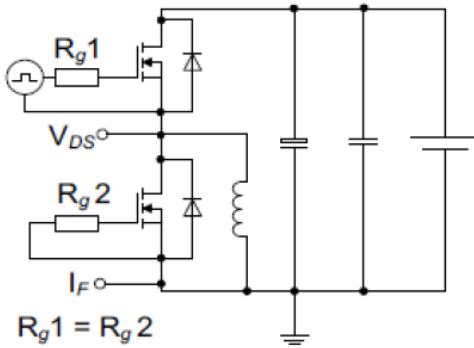


Figure 15: Switching Times

Switching times test circuit for inductive load and Switching times waveform

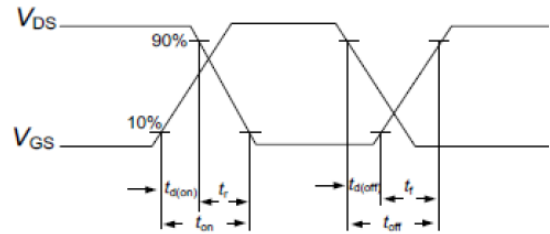
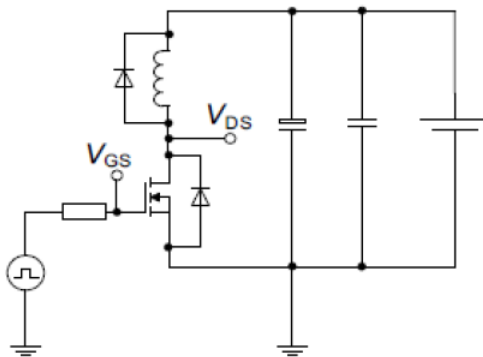
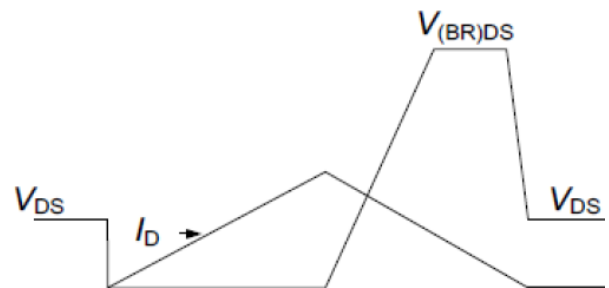
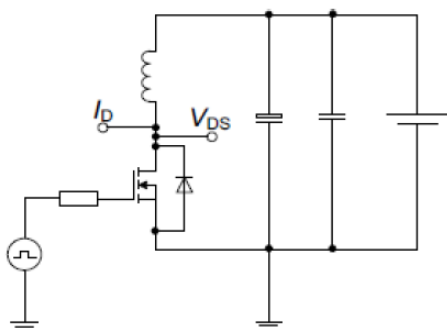


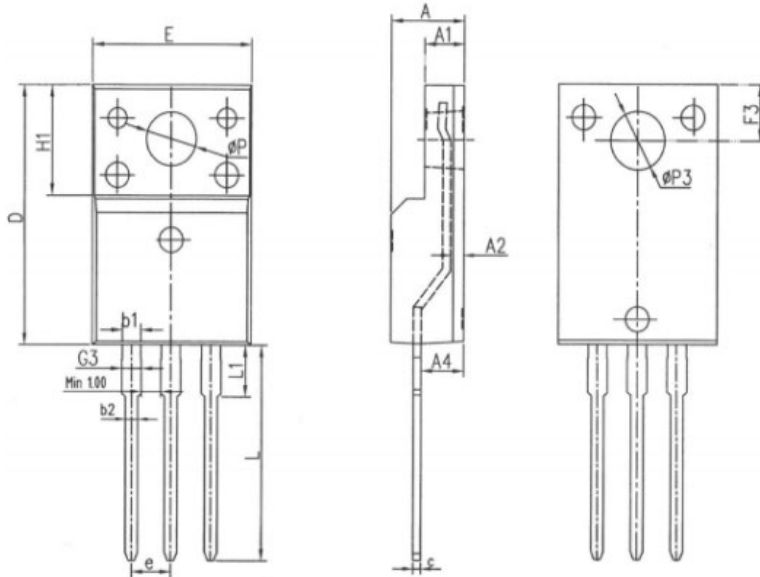
Figure 16: Unclamped Inductive Load

Unclamped inductive load test circuit and Unclamped inductive waveform



Package Outlines

TO-220F



COMMON DIMENSIONS

SYMBOL	MM		
	MTN	NOM	MAX
E	10.00	10.20	10.40
A	4.50	4.70	4.90
A1	2.34	2.54	2.74
A2	0.65	0.85	1.30
A4	2.55	2.75	2.95
c	0.40	0.50	0.65
D	15.57	15.87	16.17
H1	6.70REF		
e	2.54BSC		
ΦP	3.183REF		
L	12.68	12.98	13.28
L1	3.25	3.45	3.65
ΦP3	3.45REF		
F3	3.10	3.30	3.50
G3	1.10	1.30	1.50
b1	1.05	1.20	1.35
b2	0.70	0.80	0.92

* Dimensions in millimeters

Disclaimer

Bestirpower reserve the right to make changes, corrections, enhancements, modifications, and improvements to Bestirpower products and/or to this document at any time without notice.

The information given in this document shall in no event be regarded as a guarantee of conditions or characteristics. Bestirpower does not assume any liability for infringement of patents, copyrights, or other intellectual property rights of third parties by or arising from the use of Products or technical information described in this document.

This document is the property of Bestirpower Co., LTD., and not allowed to copy or transformed to other format if not under the authority approval.

© 2023 Bestirpower – All rights reserved