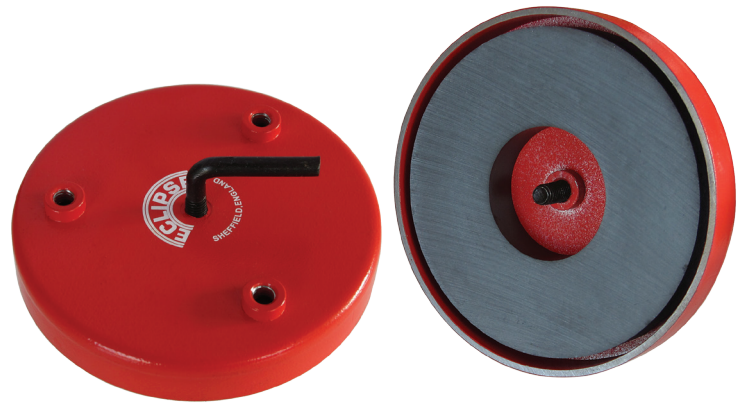


Ferrite Shallow Pot datasheet

- High resistance to demagnetisation
- Custom designs available
- Max. operating temperature 120°C.
- Mild steel pot with removable hook
- Zinc plated
- Painted red



Product Information

Product No.	Diameter <i>mm</i>	Height	Fixing stud centres PCD M6	Central fixing point	Weight <i>kg</i>	Pull force
E895	66	10.7	46mm - 3 holes	M6	0.270	25
E896	76	12.5	46mm - 3 holes	M6	0.300	33
E897	100	15.5	70mm - 3 holes	M6	0.610	55