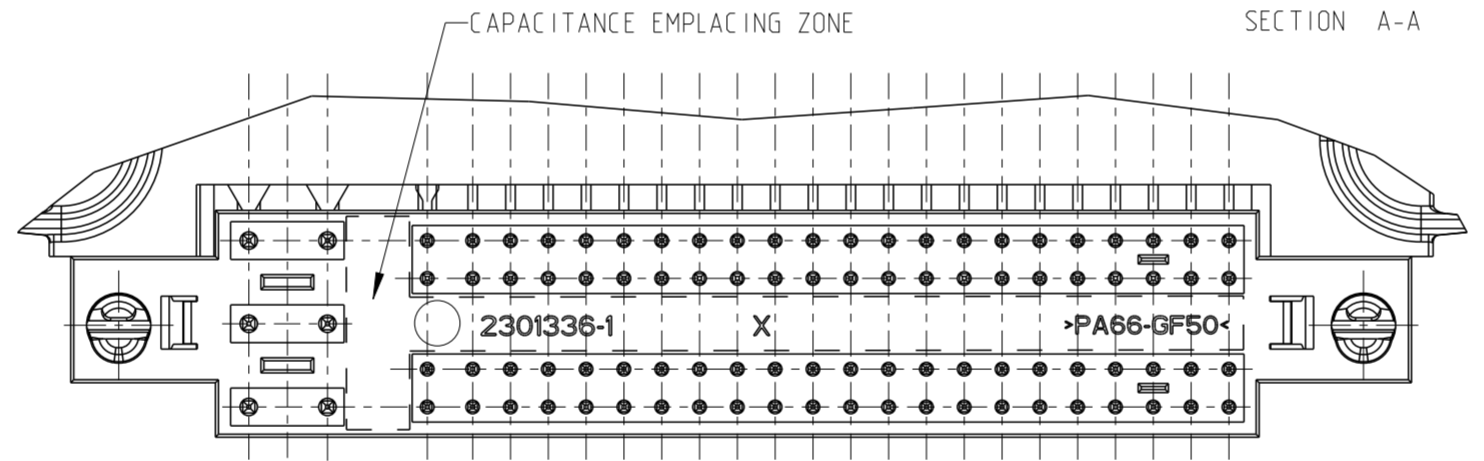
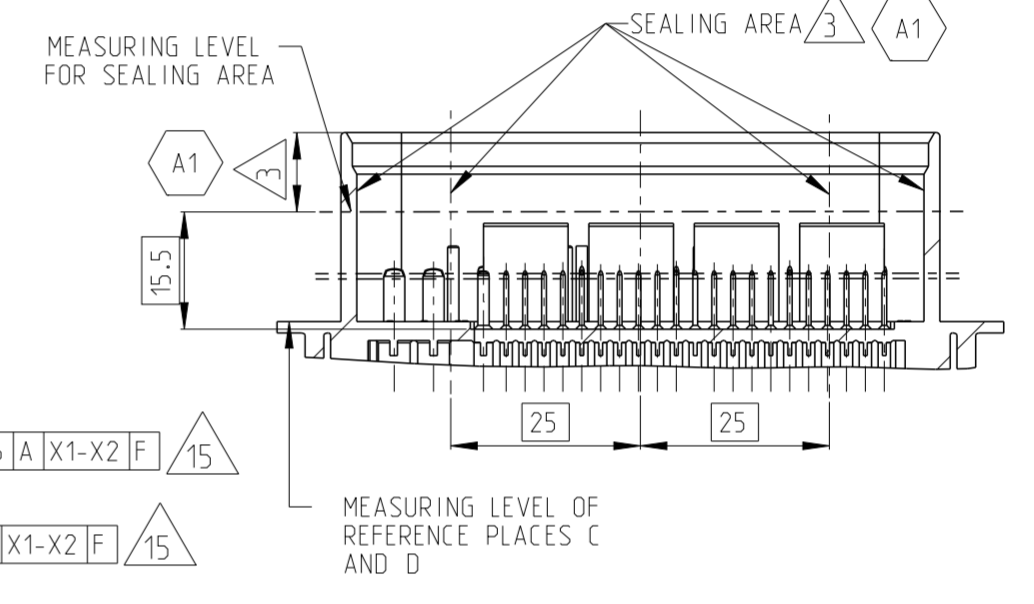
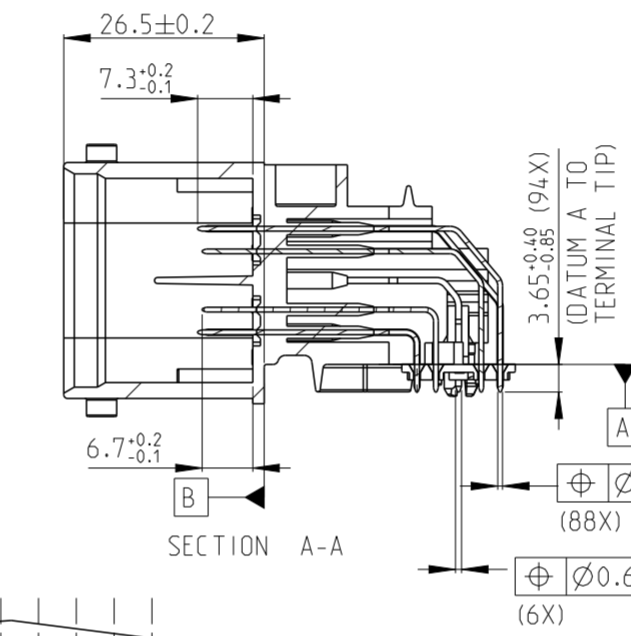
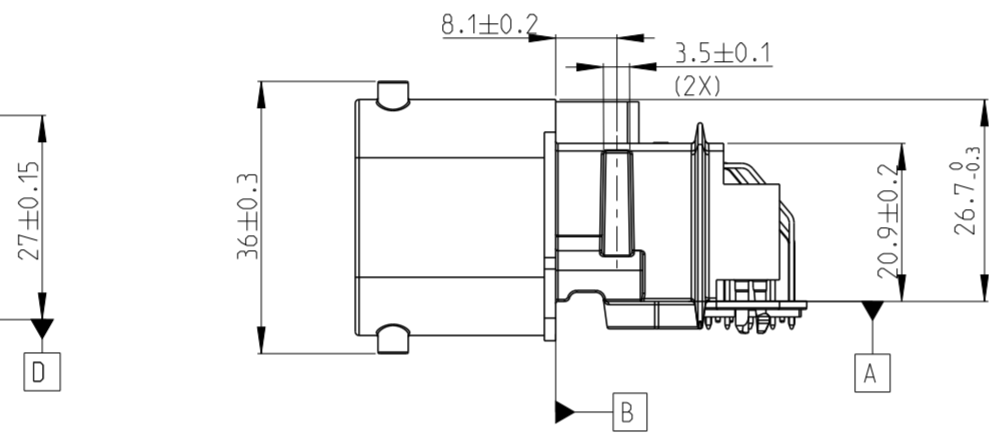
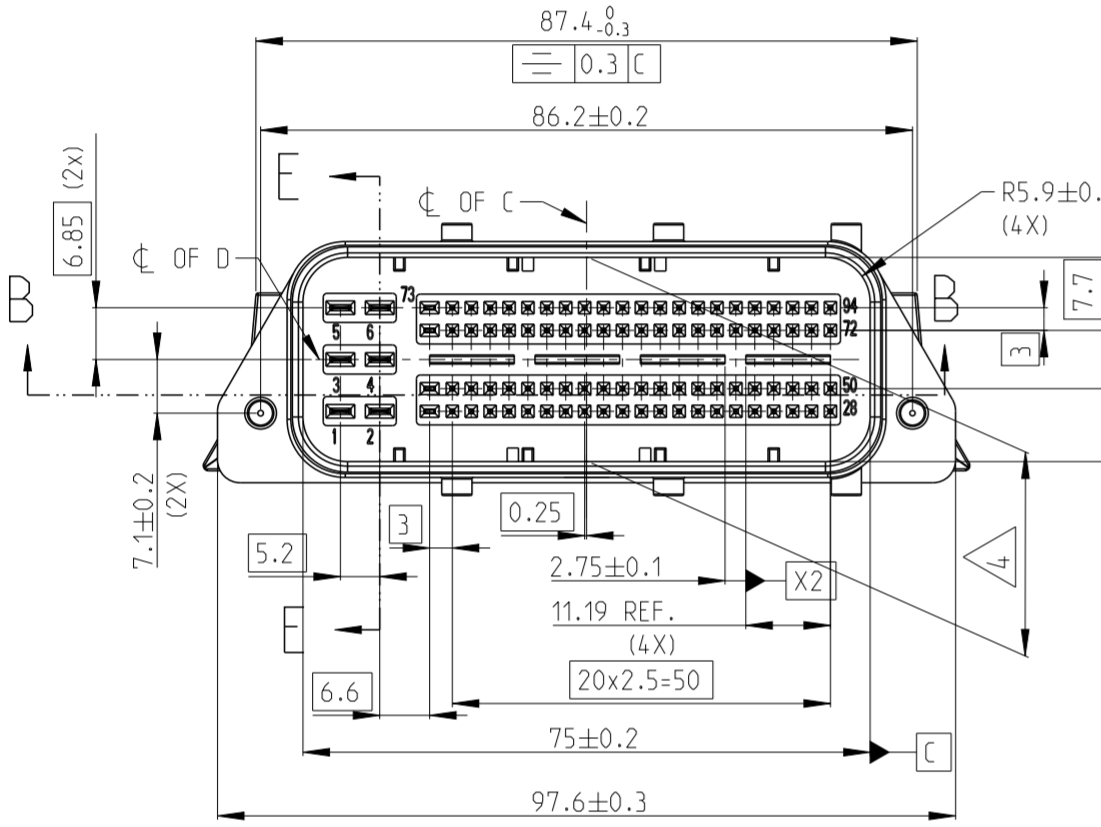
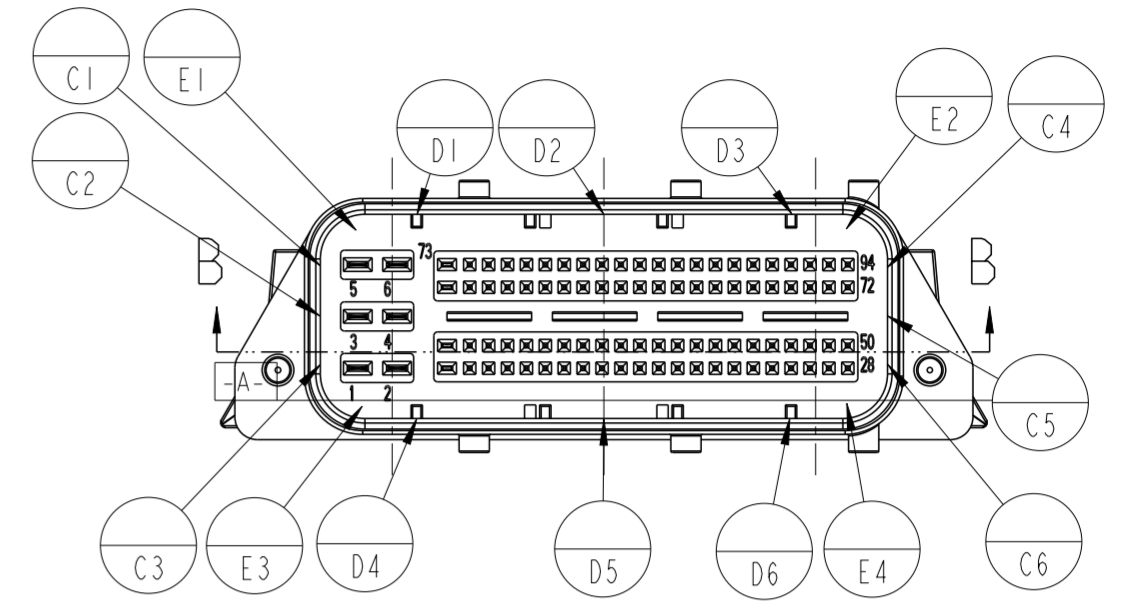
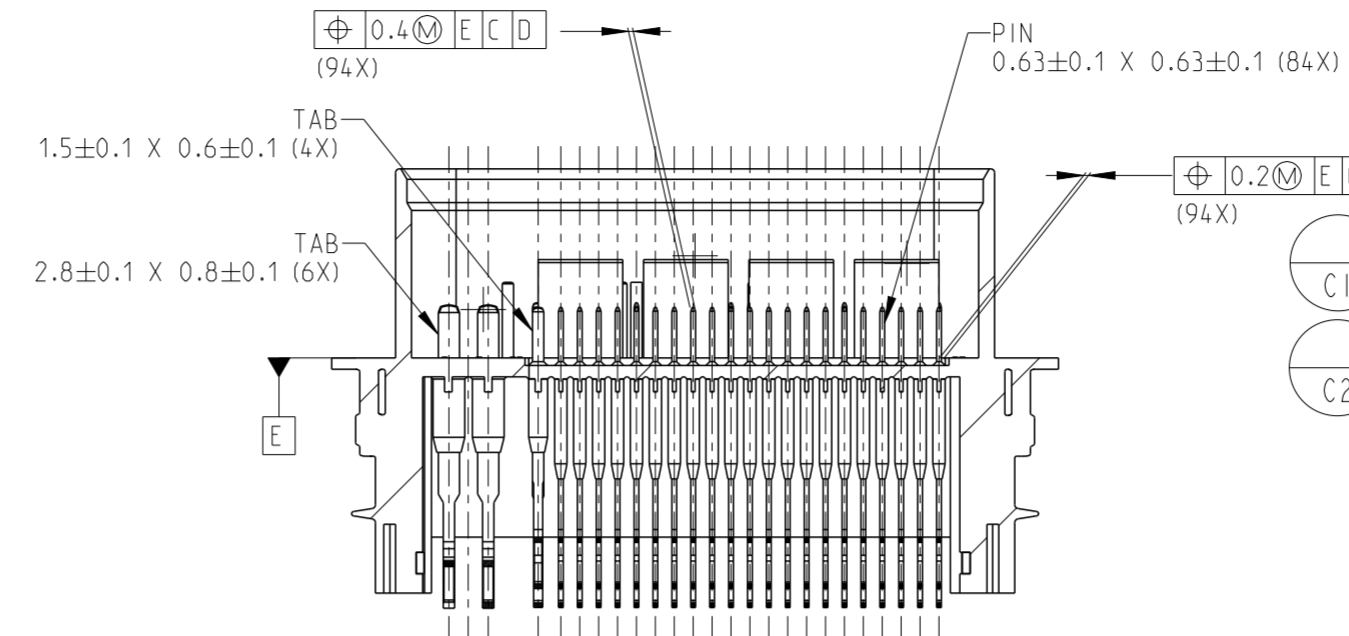
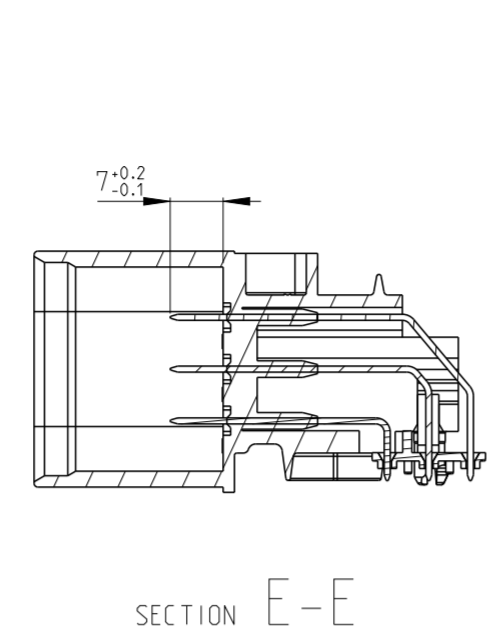
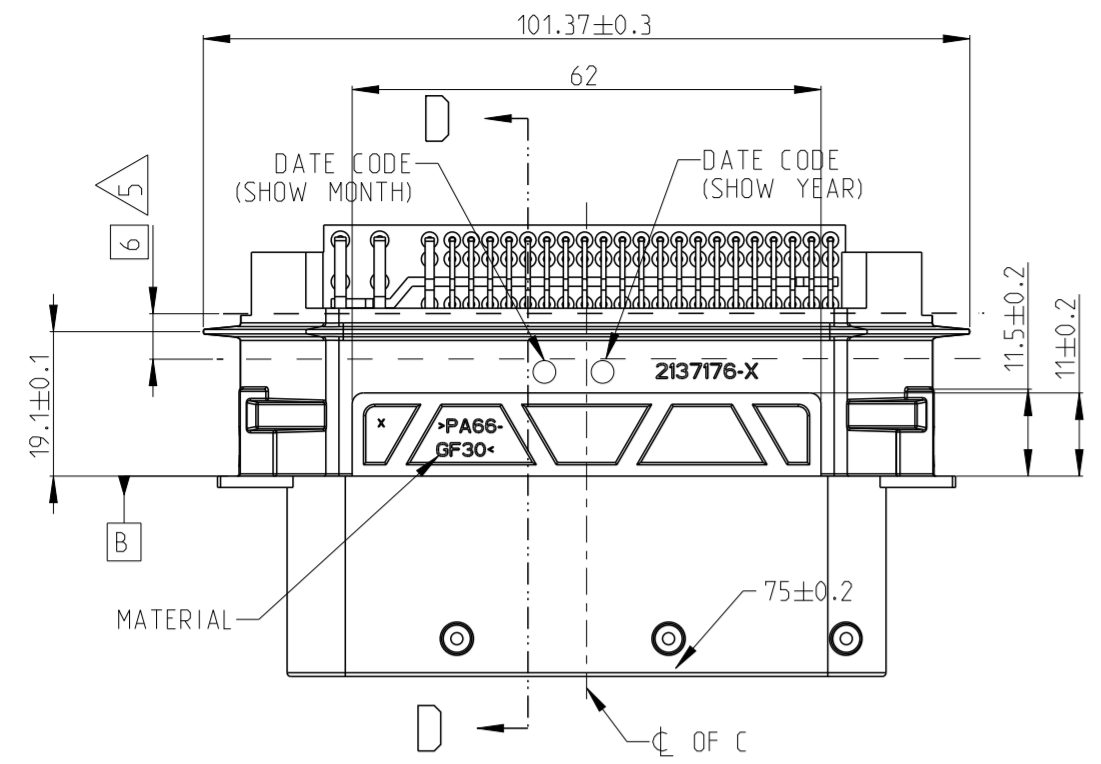
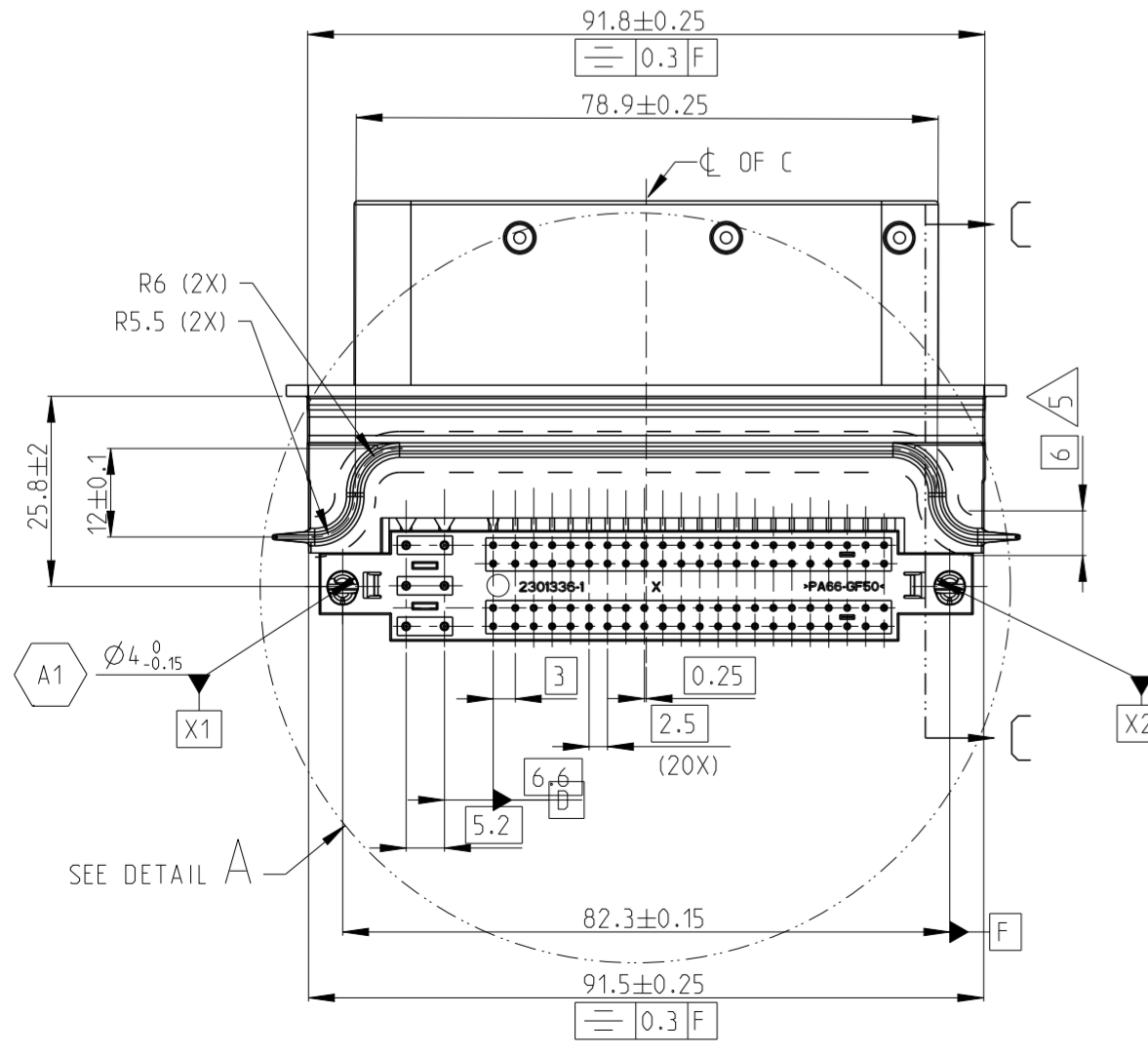
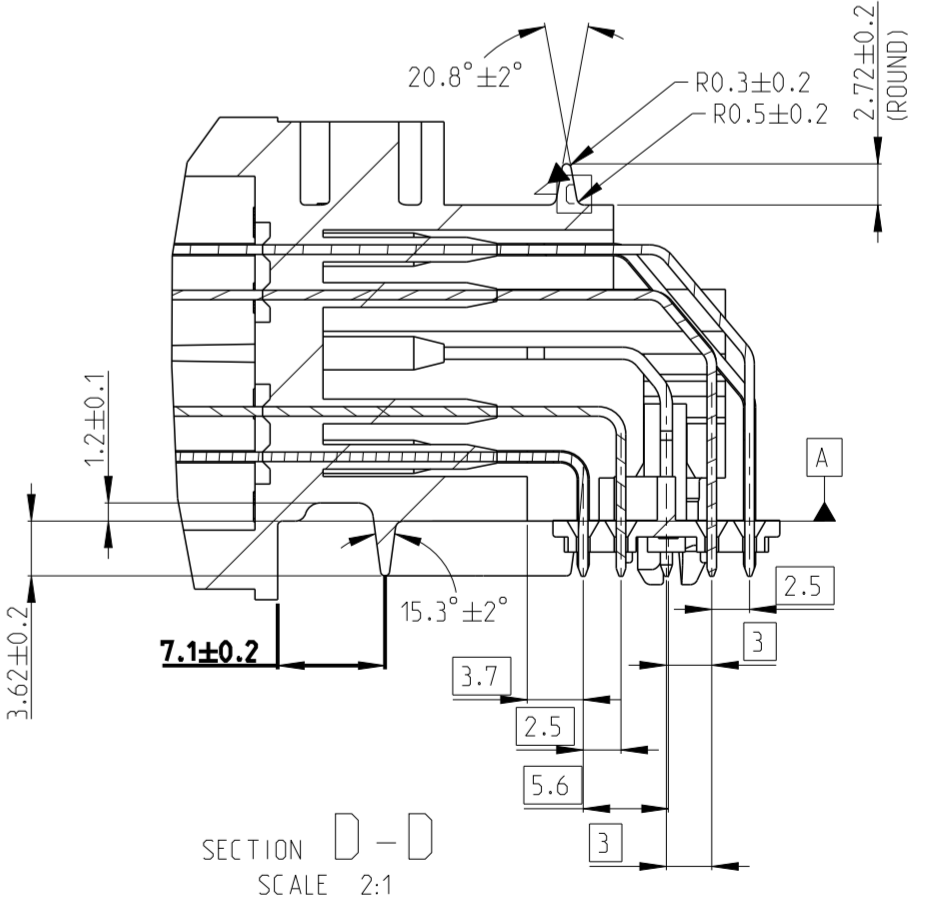
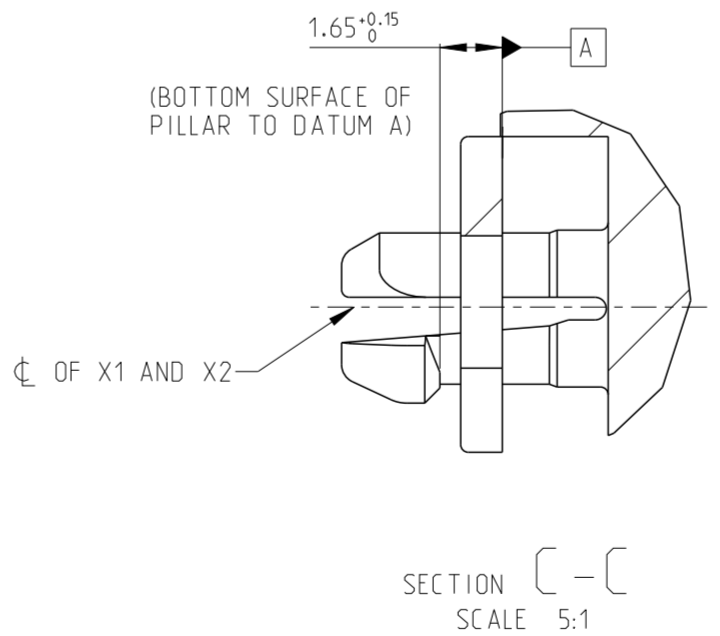
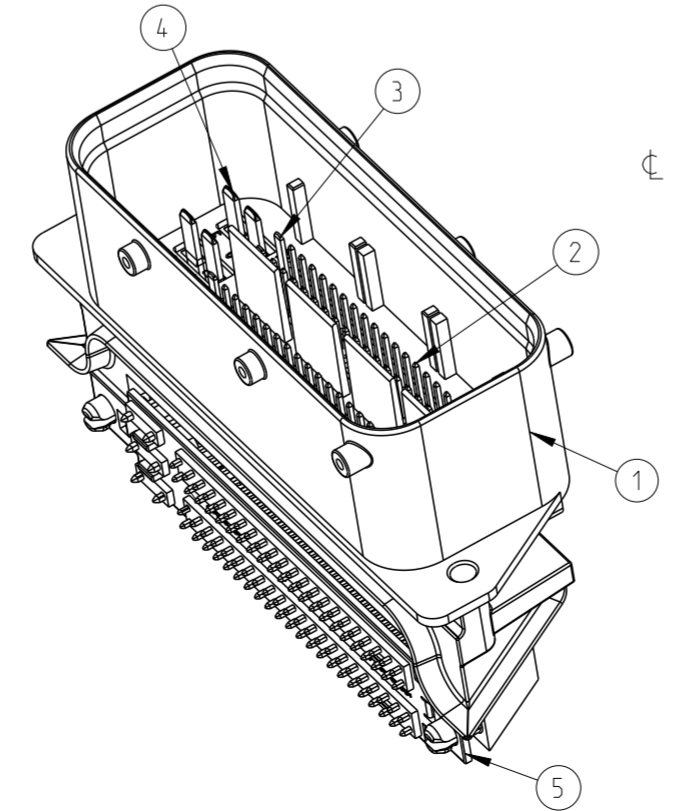


REVISIONS					
P	LTR	DESCRIPTION	DATE	DWN	APVD
A		RELEASED	02SEP16	R.C	I.Y
A1		ECN-22-168507	08AUG22	Y.Y	J.Z

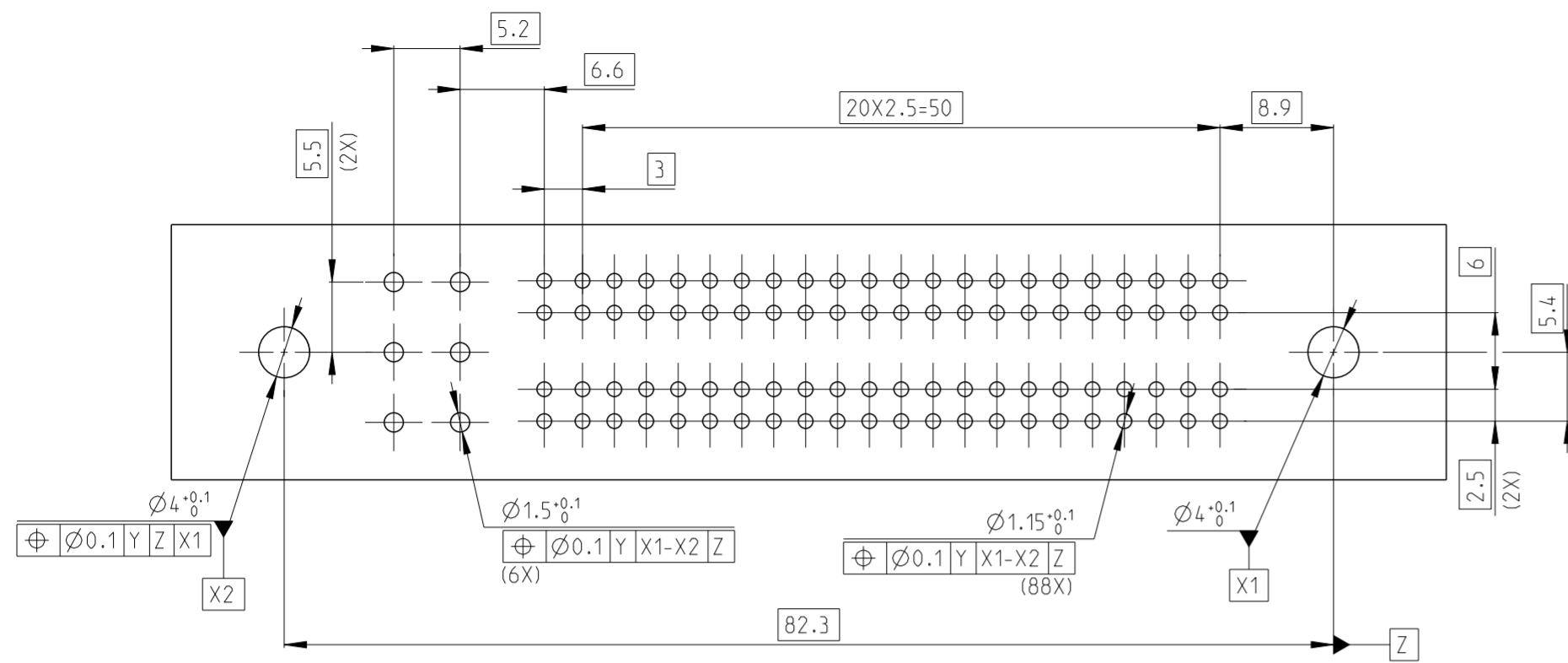


DETAIL A SCALE 2:1

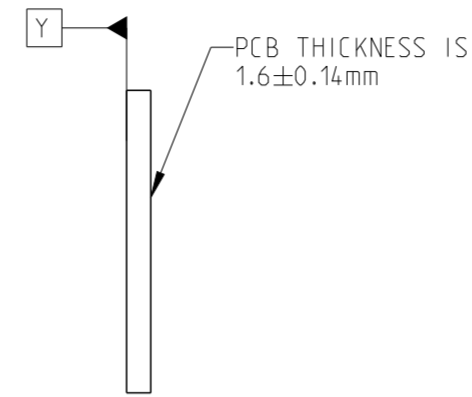


THIS DRAWING IS A CONTROLLED DOCUMENT.		DWN R.CHEN 27JUL2016	TE Connectivity		
DIMENSIONS: mm		CHK E.JIANG 27JUL2016			
TOLERANCES UNLESS OTHERWISE SPECIFIED:		APVD I.YIN 02SEP2016	NAME 94WAY HEADER ASSEMBLY (NEUTRAL)		
0 PLC ±		PRODUCT SPEC	SIZE CAGE CODE DRAWING NO RESTRICTED TO		
1 PLC ±0.1		APPLICATION SPEC	A2 00779 C-2301335		
2 PLC ±0.01		WEIGHT	SCALE 1:1 SHEET 1 OF 2 REV A1		
3 PLC ±0.001		CUSTOMER DRAWING			
4 PLC ±0.0001					
ANGLES ±					
FINISH					

REVISIONS					
P	LTR	DESCRIPTION	DATE	DWN	APVD
		SEE SHEET 1			

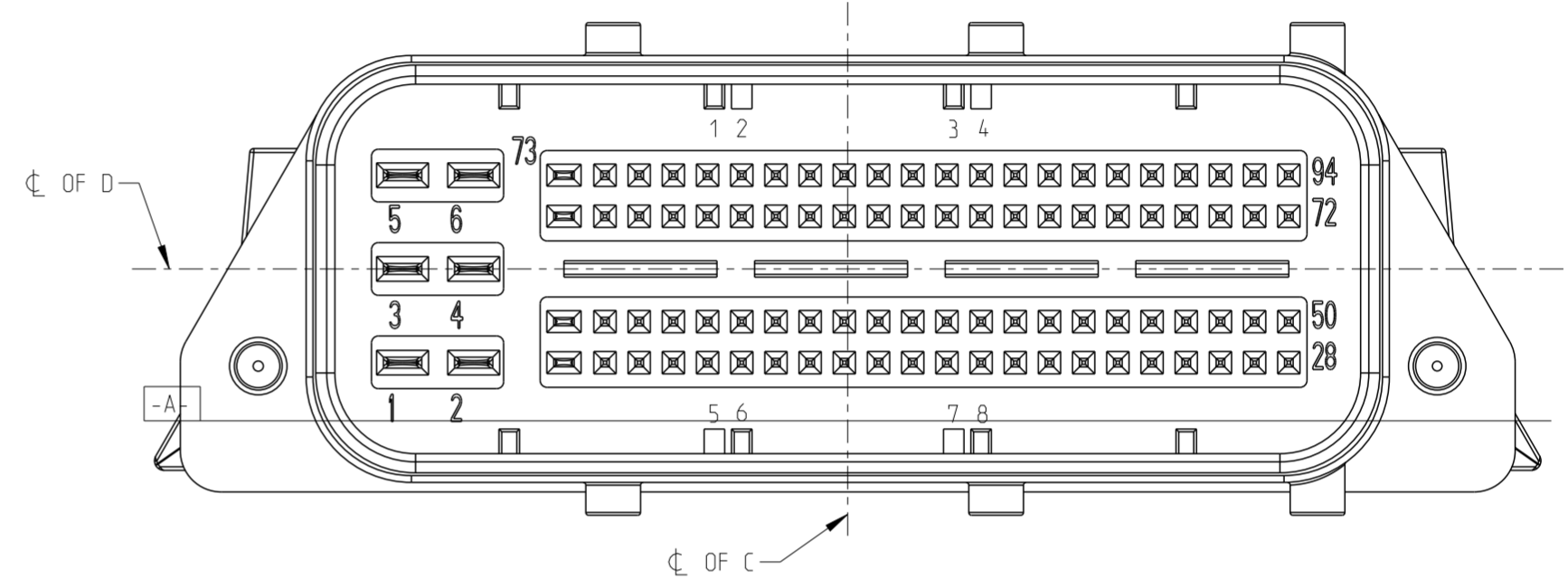


RECOMMENDED PCB LAYOUT



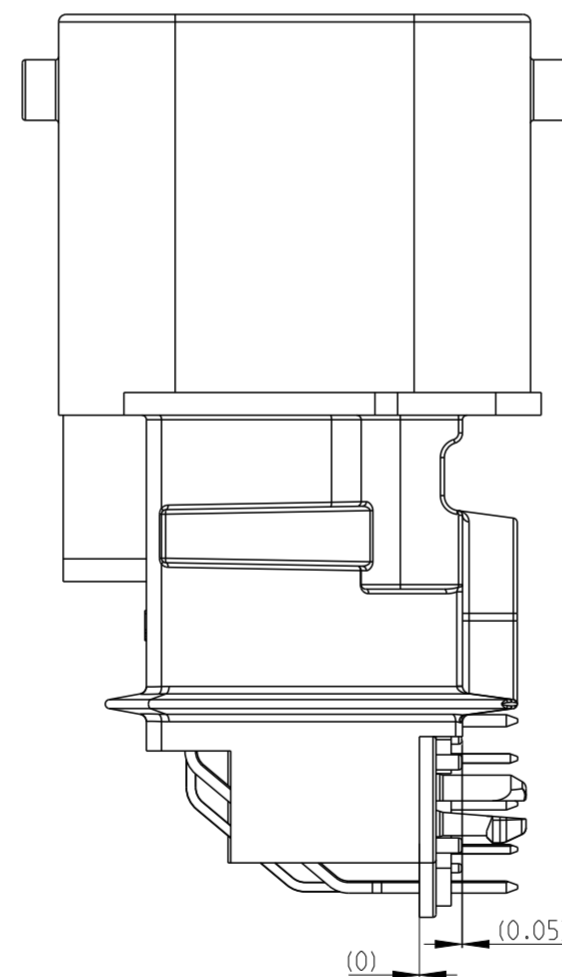
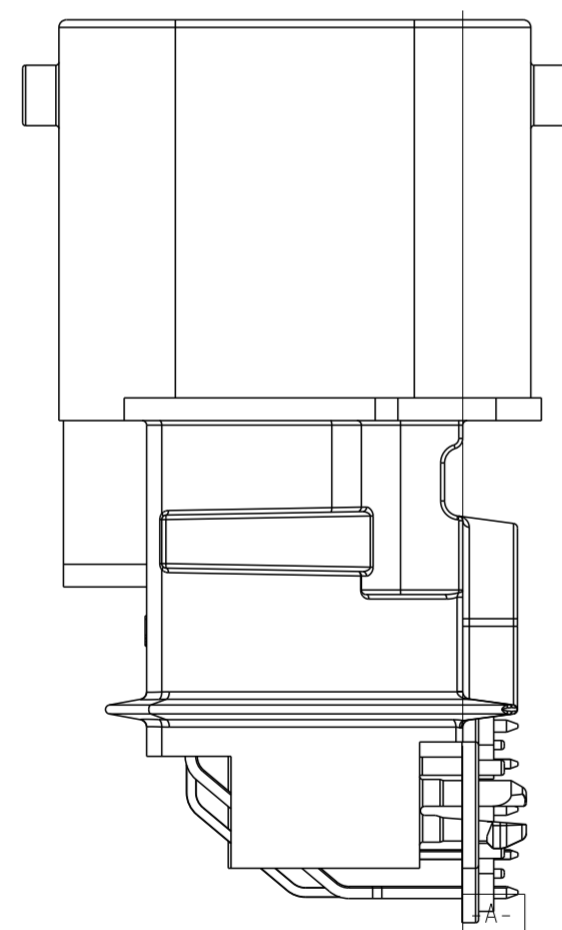
POSITION CODIFICATION RIBBING
CABLE HARNESS INTERFACE

ALL CODIFICATION RIBS REALIZED AS INSERT



BEFORE ASSEMBLE WITH PCB

AFTER ASSEMBLE WITH PCB



HEADER TE NO.	2301335-1								
CODE	A	B	C	D	E	F	G	H	Z
	1,3 5,7	1,4 5,8	2,3 6,7	2,4 6,8	1,3 6,8	2,4 5,7	2,3 5,8	1,4 6,7	NO
MATING PLUG TE P/N	3-1534904-*								

TABLE 1

1. MATERIAL SEE BELOW TABLE LISTS.

2. RETENTION FORCE
0.63 X 0.63 PIN: MIN 40N
1.5 X 0.6 TAB: MIN 55N
2.8 X 0.8 TAB: MIN 80N

3. SEALING SURFACE: CORE POLISHED IN THIS AREA. NO DEVICE. NO DRAFTS. NO SEPARATION OF TOOLS AND INJECTION POINTS PERMITTED.

4. WARPAGE PERMITTED -0.5MM MAX.

5. POTTING AREA NO BURR. SINK MARK AND TOOLING PARTLINE. FREE OF FOREIGN MATERIAL (MOLD RELATED LUBRICANTS).

6. DELIVERY WITH JOINTER IN PRE-LOCK POSITION.

7. INTERFACE LEAKAGE SHOULD MEET 8.33ml/MIN. AT 50KPA.

8. WORKING TEMPERATURE: -40°C TO +110°C .

9. PRODUCT MEET IP69K MATED WITH PLUG.

10. WITHOUT TOLERANCE DATA: LENGTHS, ANGLE, FORMAND STATUS ACCORDING DIN/ISO 2768-M.

TE NO.	QTY	DESCRIPTION	MATERIAL	COLOR/FINISH	ITEM NO.
1	94 POS. SUPPLEMENT	PA66-GF50	BLACK	5	
6	TAB 2.8 X 0.8	CuSn6	TINNED	4	
4	TAB 1.5 X 0.6	CuSn6	TINNED	3	
84	PIN 0.63	CuZn30	TINNED	2	
1	94 POS. PLASTIC HOUSING	PA66-GF30	BLACK	1	

THIS DRAWING IS A CONTROLLED DOCUMENT.

DWN: R. CHEN 27 JUL 2016
CHK: E. JIANG 27 JUL 2016
APVD: J. YIN 02 SEP 2016

STE TE Connectivity

NAME: 94WAY HEADER ASSEMBLY (NEUTRAL)

SIZE: A2 CAGE CODE: 100779 DRAWING NO: C-2301335 RESTRICTED TO: -

MATERIAL: SEE TABLE LIST TOLERANCES UNLESS OTHERWISE SPECIFIED: 0 PLC ±0.1, 1 PLC ±0.1, 2 PLC ±0.01, 3 PLC ±0.001, 4 PLC ±0.0001, ANGLES ±, FINISH -

WEIGHT: -

CUSTOMER DRAWING SCALE: 2:1 SHEET: 2 OF 2 REV: A1