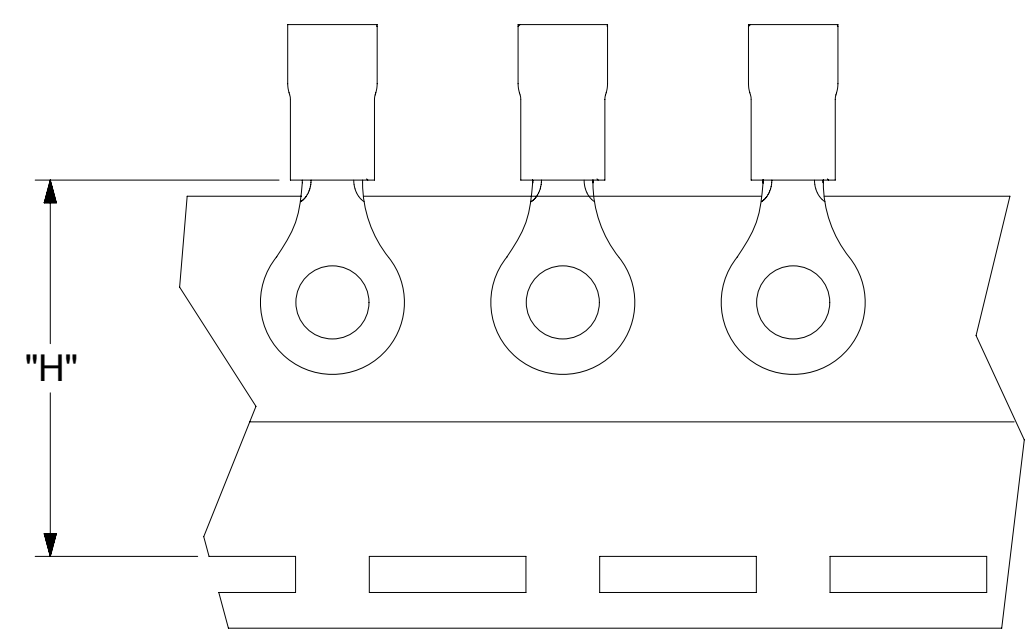
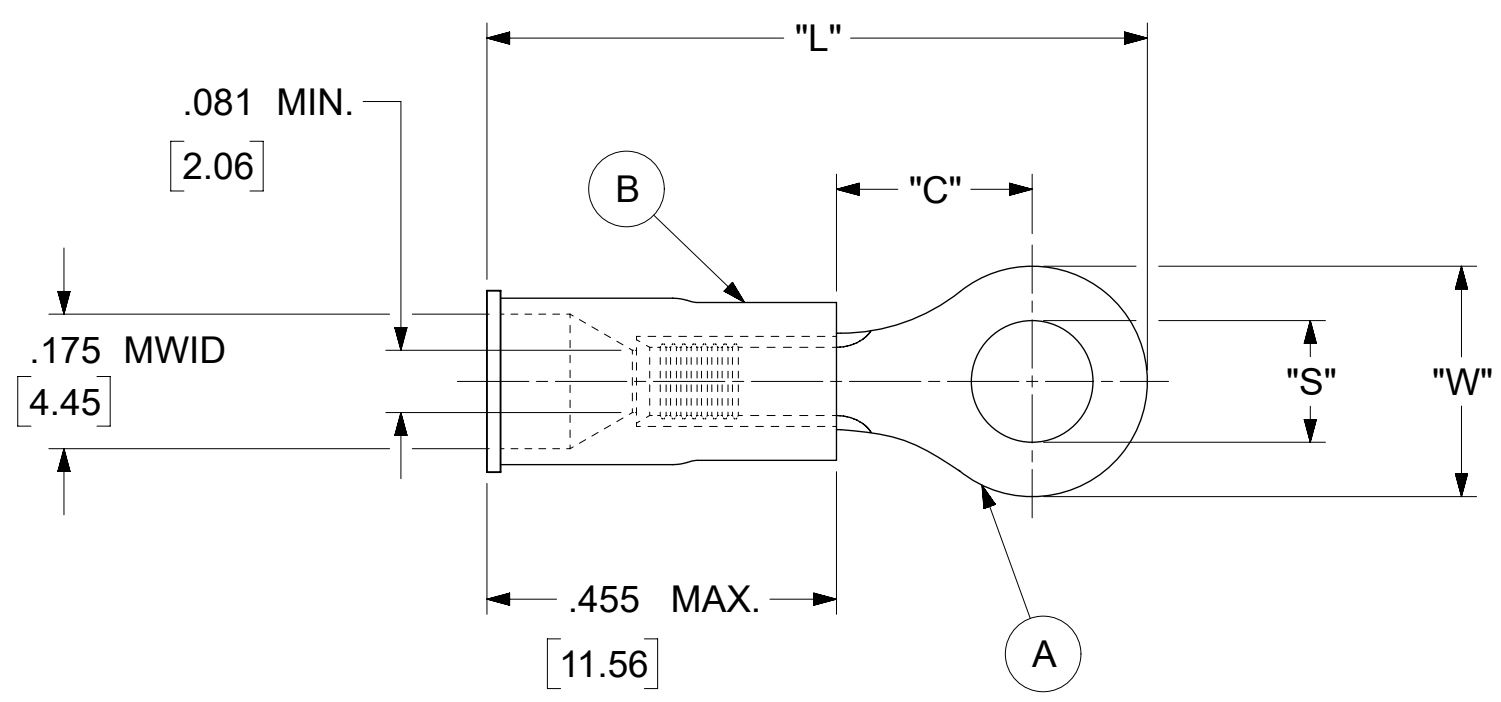


LOOSE PIECE		SPECIFICATIONS						
MATERIAL NUMBER	ENGINEERING NUMBER	STUD SIZE	"S" ±.005 [0.13]	"W" ±.010 [0.25]	"C" MIN.	"L" MAX.	"H"	STOCK ±.001 [0.025] THICKNESS
190540073	B-218-14X	14	.265 [6.73]	.534 [13.56]	.554 [14.07]	1.311 [33.30]	.980 [24.89]	.031 [.79]
190540075	B-218-38X	38	.390 [9.91]					
190540077	B-218-56X	56	.328 [8.33]					
190540080	B-223-04X	4	.119 [3.02]	.250 [6.35]	.209 [5.31]	.835 [21.21]	.980 [24.89]	.031 [.79]
190540081	B-223-06X	6	.146 [3.71]					
190540083	B-223-08X	8	.173 [4.39]					
190540086	B-225-14X	14	.265 [6.73]	.467 [11.86]	.388 [9.86]	1.112 [28.24]	.980 [24.89]	.031 [.79]
190540088	B-225-56X	56	.328 [8.33]					
190540107	B-237-04X	4	.119 [3.02]	.312 [7.92]	.285 [7.24]	.926 [23.52]	.980 [24.89]	.031 [.79]
190540108	B-237-06X	6	.146 [3.71]					
190540110	B-237-08X	8	.173 [4.39]					
190540113	B-237-10X	10	.198 [5.03]					
190540117	B-239-06X	6	.146 [3.71]	.342 [8.69]	.310 [7.87]	.971 [24.66]	---	.031 [.79]
190540118	B-239-08X	8	.173 [4.39]					
190540119	B-239-10X	10	.198 [5.03]					



PARTS ON TAPE

- NOTES:
- MATERIAL:
 - (A). RING TONGUE TERMINAL: COPPER
 - PLATING: ELECTRO-TIN (.0003 MIN.)
 - (B). INSULATION: MOLDED PVC (BLUE)
 - MWID: MAXIMUM WIRE INSULATION DIAMETER
 - WIRE SIZE: 16 -14 AWG
1.0 -2.5 MM²
 - ALL DIMENSIONS IN INCHES/[MM].
 - PARTS ARE ROHS COMPLIANT.
 - DIMS. SHOWN ARE FOR REFERENCE ONLY.

THIS DRAWING CONTAINS INFORMATION THAT IS PROPRIETARY TO MOLEX ELECTRONIC TECHNOLOGIES, LLC AND SHOULD NOT BE USED WITHOUT WRITTEN PERMISSION											
DIMENSION UNITS INCH/mm		SCALE NTS		CURRENT REV DESC: REMOVED OBSOLETE PART NUMBERS AS PER PCN#512606.				molex			
GENERAL TOLERANCES (UNLESS SPECIFIED)				EC NO: 764691		RING TONGUE TERMINAL INSULKRIMP 200-SERIES					
4 PLACES	±	MM	±	DRWN: RAVINR1	2023/08/31	PRODUCT CUSTOMER DRAWING		DOCUMENT NUMBER	DOC TYPE	DOC PART	REVISION
3 PLACES	±	MM	± 0.005	CHK'D: GGA	2023/10/13	190540072		PSD	000	A3	
2 PLACES	±	MM	± 0.01	APPR: GGA	2023/10/13	INITIAL REVISION:		MATERIAL NUMBER	CUSTOMER	SHEET NUMBER	
1 PLACE	±	MM	±	DRWN: KO	1984/10/25	C-SIZE		19054	GENERAL MARKET	1 OF 1	
0 PLACES	±	MM	±	APPR: JMACNEIL	2019/07/01	THIRD ANGLE PROJECTION		SEE TABLE			
ANGULAR TOL ± 0.5 °				DRAFT WHERE APPLICABLE MUST REMAIN WITHIN DIMENSIONS		DRAWING		SERIES			