

WL18xxCOM82SDMMC WL18XX SDMMC and UART Adapter Board

User's Guide



Literature Number: SWRU398
January 2015

WL18xxCOM82SDMMC WL18XX SDMMC and UART Adapter Board

1 General Description

This board is designed for simple connection between the edge 100-pin edge connector COM (WiLink chip on module) solutions board to the host platforms through an SDIO edge connector for WLAN, a 20-pin FPC connector for *Bluetooth*[®], and PCM interfaces or wire cable.

2 Features

- Ease of connection to multiple host platforms using 1.8-V and 3.3-V interfaces through level shifting.
- Evaluation and debugging of the COM8 module through an onboard USB port with four debug interfaces
- Onboard power (through a USB port) and clock, enables distribution to the module

3 Hardware Description

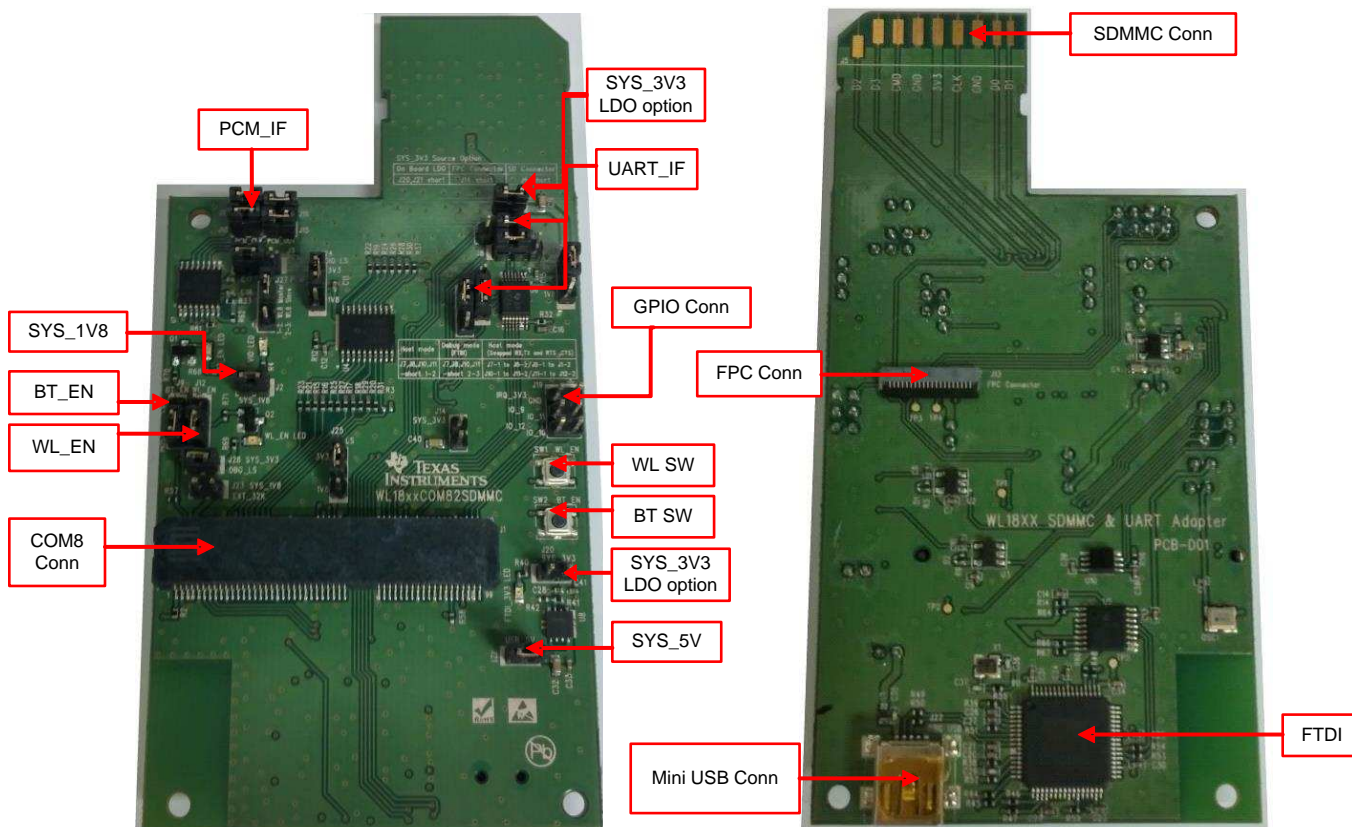


Figure 1. SDMMC Adapter Board Overview

WiLink is a trademark of Texas Instruments.
Bluetooth is a registered trademark of Bluetooth SIG.

3.1 Connector and Jumper Descriptions

3.1.1 Jumper Settings

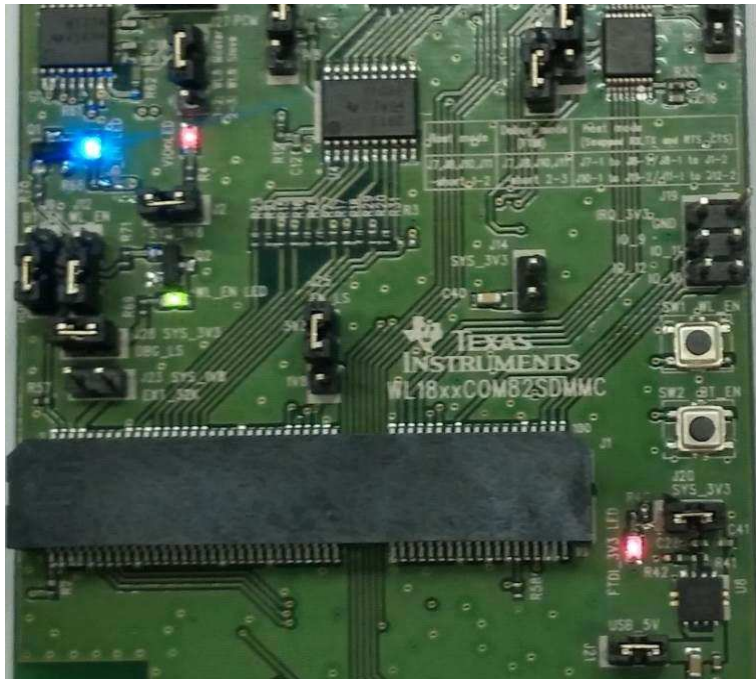
Schematics Reference	Description	Comments
J2	VIO, 1.8-V source	
J3	Bluetooth PCM LS (1.8 V/3.3 V) selection	(1-2) is 1.8 V (2-3) is 3.3 V (default)
J4	Bluetooth UART LS (1.8 V/3.3 V) selection	(1-2) is 1.8 V (2-3) is 3.3 V (default)
J24	WLAN SDIO LS (1.8 V/3.3 V) selection	(1-2) is 1.8 V (2-3) is 3.3 V (default)
J25	Bluetooth/WL Enable LS (1.8 V/3.3 V) selection	(1-2) is 1.8 V (2-3) is 3.3 V (default)
J6, J14, J20, J21	3.3-V power selection connect one of three options	J6 power from SD connector. (default) J14 power from FPC connector. J20 power from onboard LDO J21 must be closed to supply the LDO from USB.
J7, J8, J10, J11	Bluetooth HCI source selection	Host mode: J7, J8, J10, J11 (1-2). (default) Debug mode: J7, J8, J10, J11 (2-3) Host mode (swapped): J7-1 to J8-2 / J8-1 to J7-2 / J10-1 to J11-2 / J11-1 to J12-2
J9	Bluetooth enable control	(1-2): EN control by push-button. (2-3): Control by host. (default)
J12	WL enable control	(1-2): EN control by push-button. (2-3): Control by host. (default)
J15, J16, J17, J18	PCM Interface	Option to drive the PCM interface from host through FPC connector or connect using the external blue wire cable.
J23	Slow clock	Supply slow clock to the module. (NU by default)
J19	Debug header	Option for WL_IRQ and GPIO9 through GPIO12 to connect using the external blue wire cable.

3.1.2 Push-Buttons

Reference	Usage	Comments
SW1	BT_EN	Module Bluetooth enable control
SW2	WL_EN	Module WLAN enable control

3.1.3 LEDs

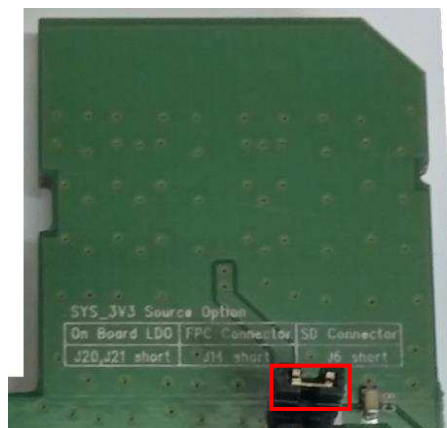
Reference	Color	Description	Comments
LED1	Red	SYS_1V8	ON, when SYS_1V8 is available
LED2	Red	SYS_3V3	ON, when 3V3 supply is available
LED3	Blue	BT_EN	ON, when BT_EN is supplied from host/on board
LED4	Green	WL_EN	ON, when WLAN_EN is supplied from host/on board


Figure 2.

3.2 Power Supply

The board is designed to accept power from the SD/FPC connector of Host platform or onboard LDO generated from 5 V of the USB connector.

3.2.1 3.3 V From SD Connector


Figure 3. Supply 3V3 from SD Connect (J6 short)

3.2.2 3.3 V From FPC Connector

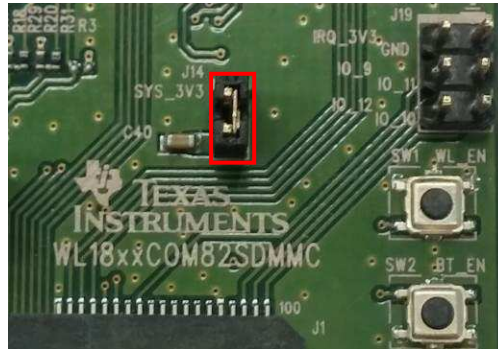


Figure 4. Supply 3V3 From FPC Connect (J14 Short)

3.2.3 3.3-V Onboard LDO Supply

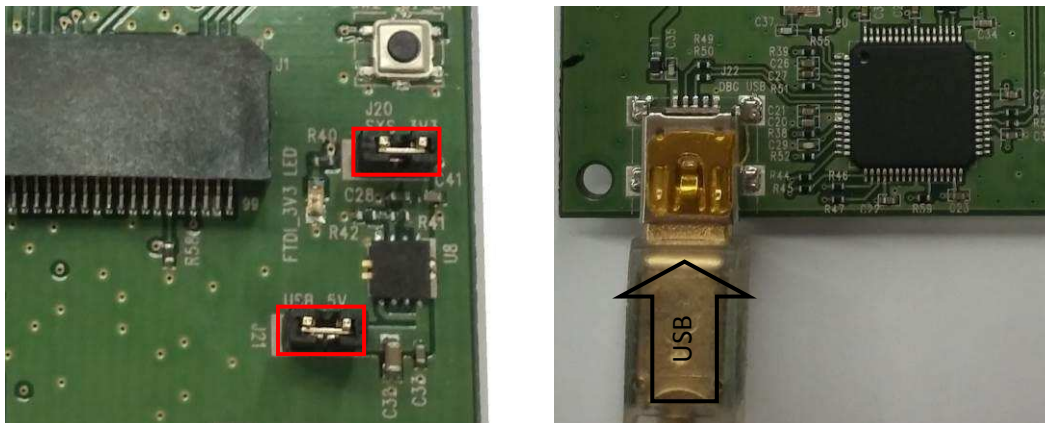


Figure 5. Supply 3V3 From Onboard LDO (J20, J21 Short)

3.3 Slow Clock Source

There is an option on board to supply the slow clock of 32.768 kHz to the module. By default, this option is not used because the COM board has an onboard oscillator.



Figure 6. Slow Clock (J23 Short)

3.4 Debug

An onboard FTDI chip on the adapter board drives all the debug interfaces on one mini USB port.

The FTDI chip provides the ability to have *Bluetooth*/WiFi firmware logger and *Bluetooth* HCI/WLAN RS-232 control interfaces routed easily to a single USB port that can supply the entire system.

The board can be operated with debug capabilities in two ways:

1. Use the board as a stand-alone COM board debug.
 - (a) Generate the 3.3 V/1.8 V from the onboard LDO through the USB port J22 (J2, J21, and J20 assembled).
 - (b) Enable lines can be controlled from the board (*Bluetooth* J9 pins 1-2 short; WLAN J12 pins 1-2 short).
 - (c) If the COM8 board does not have onboard slow clock, drive the slow clock to the module (J23).
 - (d) All four interfaces are driven to the FTDI device and through the USB port. Four virtual ports will be created on the PC in the following order: *Bluetooth* UART, *Bluetooth* logger, WLAN RS232, WLAN logger (UART J7, J8, J10, J11 short 2-3; Debug LS: J28 assembled)
2. Use the firmware loggers to monitor the operation of the device while running with a host.
 - (a) Make sure that **only one source** is driving the SYS_3V3 (**J6** or **J14**) and **J20** is disconnected.
 - (b) For the logger operation, connect the USB cable to J22 and make sure J21 and J28 are assembled.
 - (c) On the virtual ports of the PC, *Bluetooth* logger will be identified as second port and WLAN as the fourth.

4 Connecting Application

The WL18xxCOM82SDMMC board is designed to connect the WiLink™ 8 evaluation board (WL18xxMODCOM8x) or any other COM (connectivity on module) board using MEC6 edge 100-pin connector to any host platform using SD card/FPC connector/single-wire ribbon.

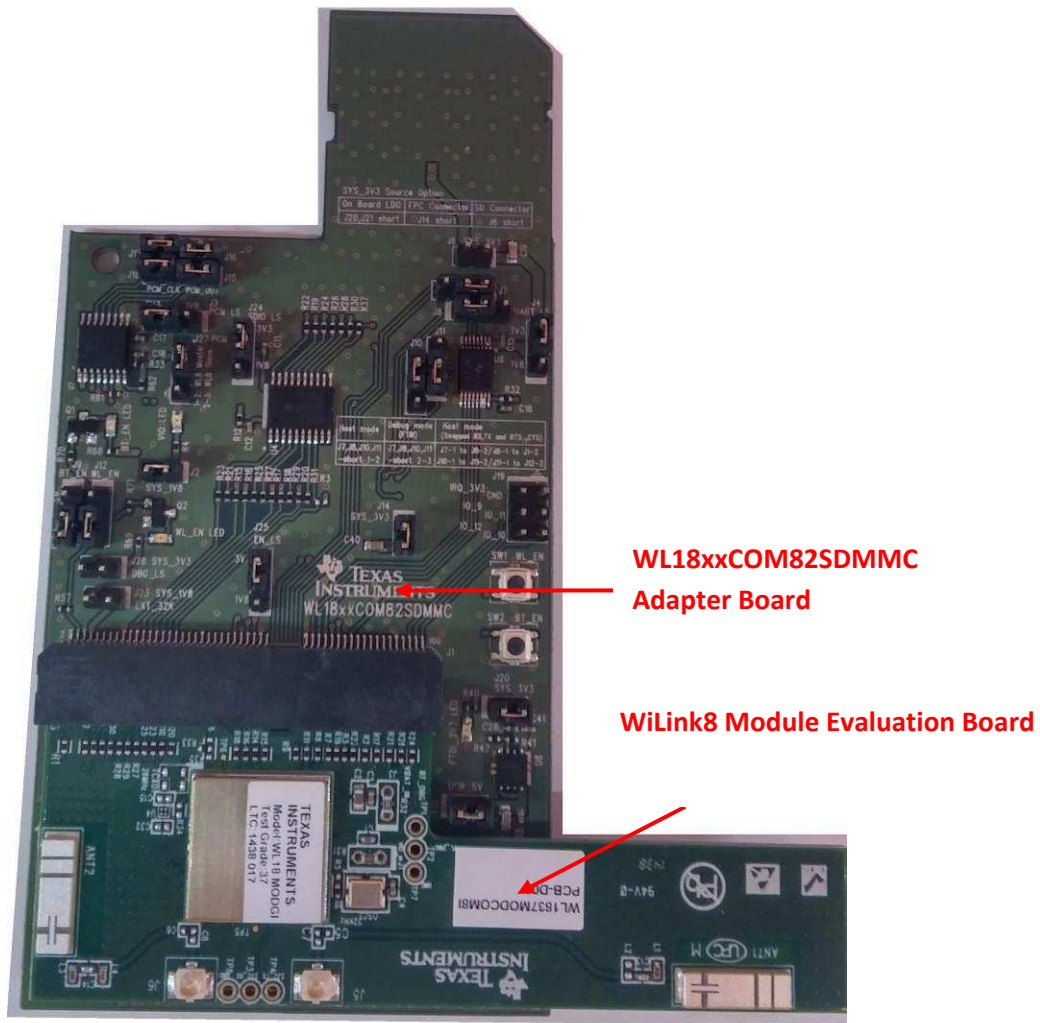


Figure 7. WiLink8 COM8 Board With Adapter Board Overview

4.1 Connecting to Platform

4.1.1 General Connection Options

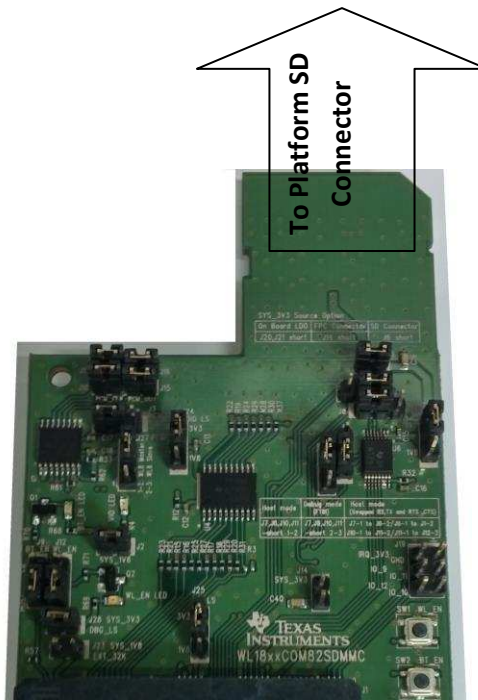


Figure 8. Connect to Platform With SDMMC for SDIO Interface

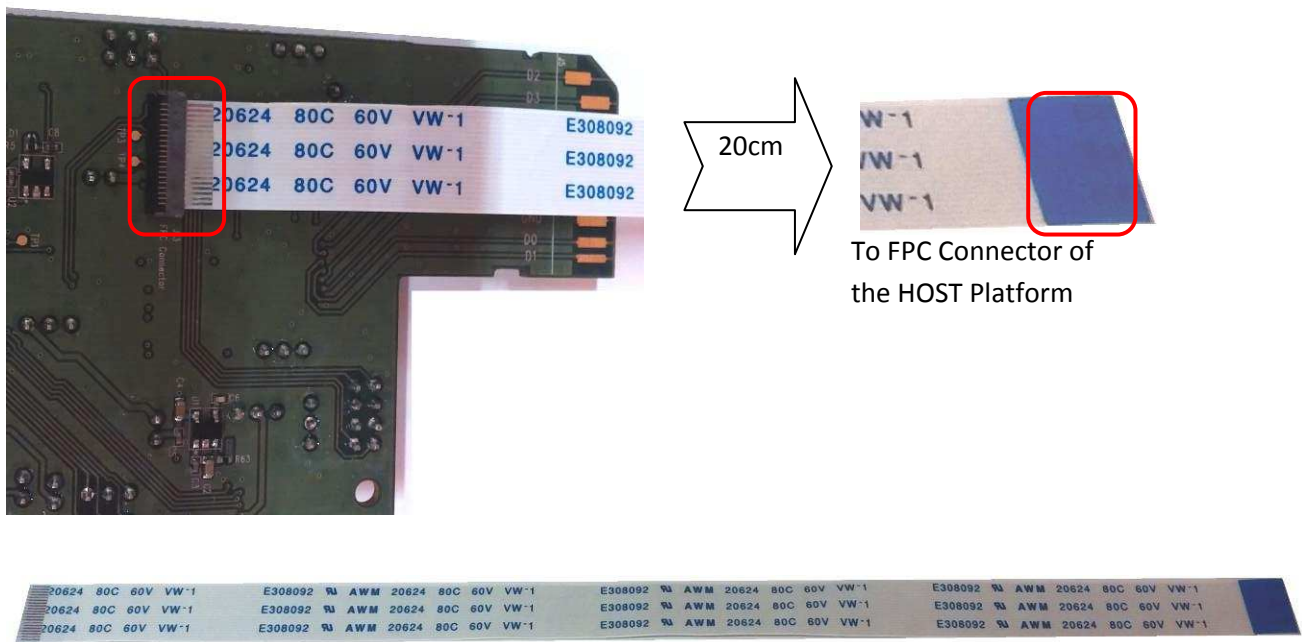


Figure 9. Connect to Platform With FPC Cable

4.1.1.1 Example of Connection Procedure Using the Wire-up Kit

Figure 10 shows an example of the connection procedure using the wire-up kit.

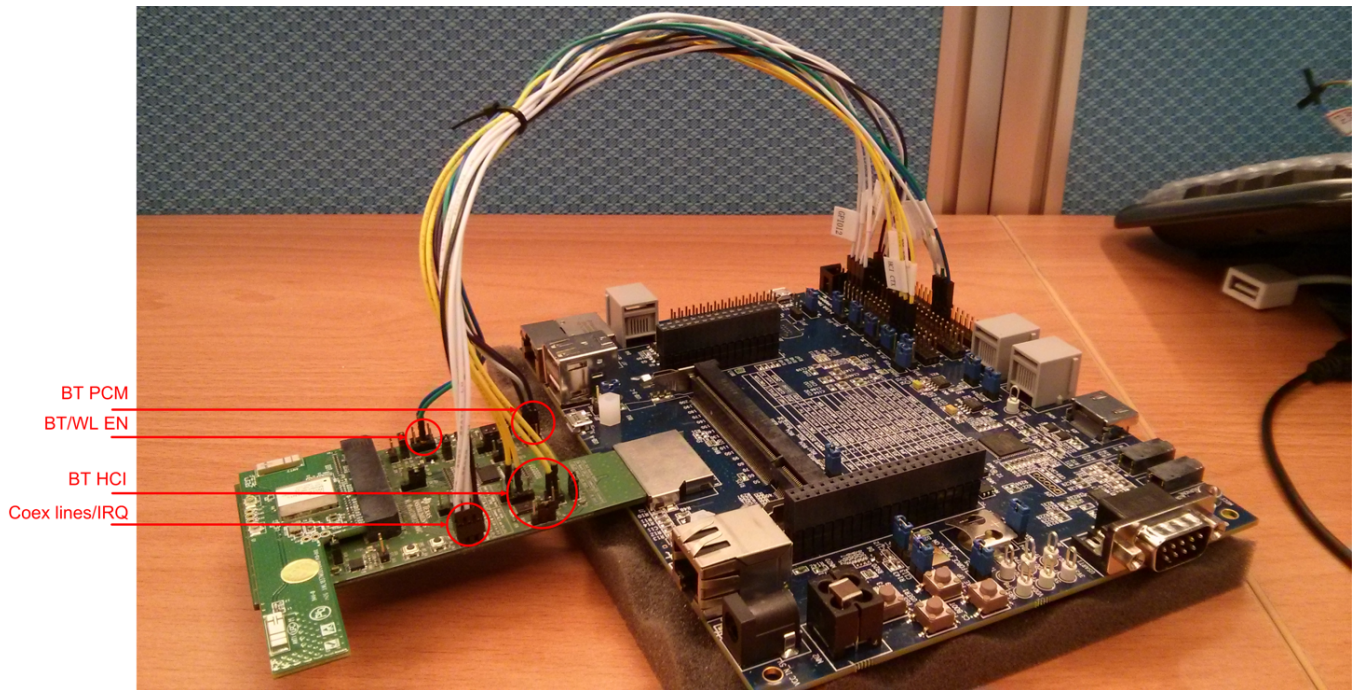


Figure 10. General Wire-up Connection

4.1.2 Freescale Sabre Board Connectivity

COM8 100-pin	WL8 Naming	Adapter Board FPC(J13)	Sabre Board FPC(J13) ⁽¹⁾
66	HCI_TX	3	J13.18 (SPINOR_MISO)
68	HCI_RX	5	J13.16 (SPINOR_CS0)
70	HCI_CTS	4	J13.17 (KEY_ROW4)
72	HCI_RTS	2	J13.19 (KEY_COL4)
89	BT_EN	15	J13.6 (KEY_ROW6)
34	WL_IRQ	19	J13.2 (SPINOR_CLK)
4	WL_EN	20	J13.1 (SPINOR_MOSI)
5,7	3.3V	6,7	J13.14 and J13.15
52	BT_AUD_CLK	10	
54	BT_AUD_FSYNC	9	
56	BT_AUD_IN	11	
58	BT_AUD_OUT	12	
WiFi_IF ⁽²⁾	SDIO0-3, SDIO_Clk, SDIO_CMD, Power	J5	J500

⁽¹⁾ For Sabre board operation, ensure that R212, R213, R209, R214, R210, R215, R211 are assembled

⁽²⁾ WiFi SDIO interface is connected directly from J5 connector on adapter board to J500 SD slot on Sabre board

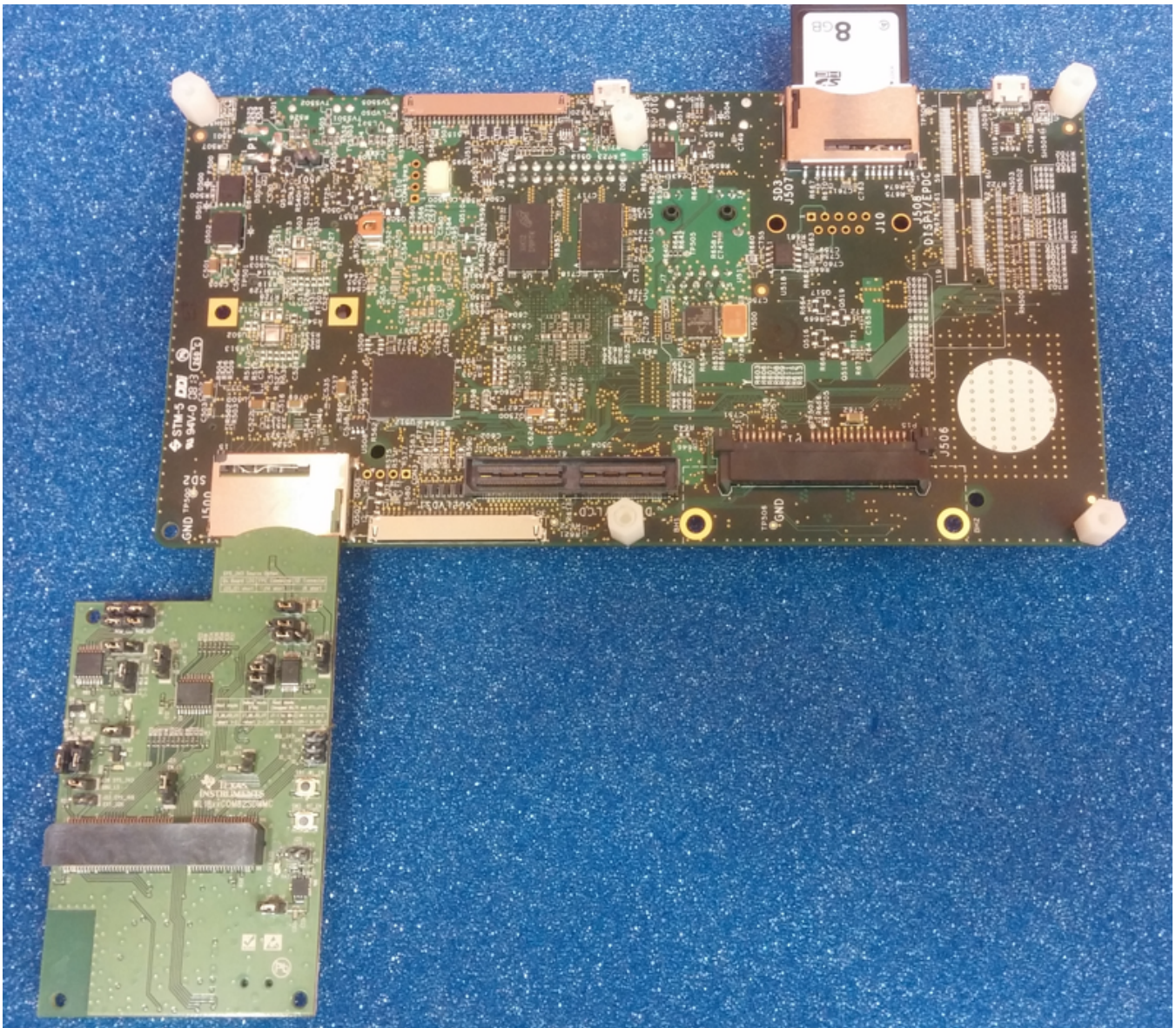


Figure 11. Connection Diagram (Top)

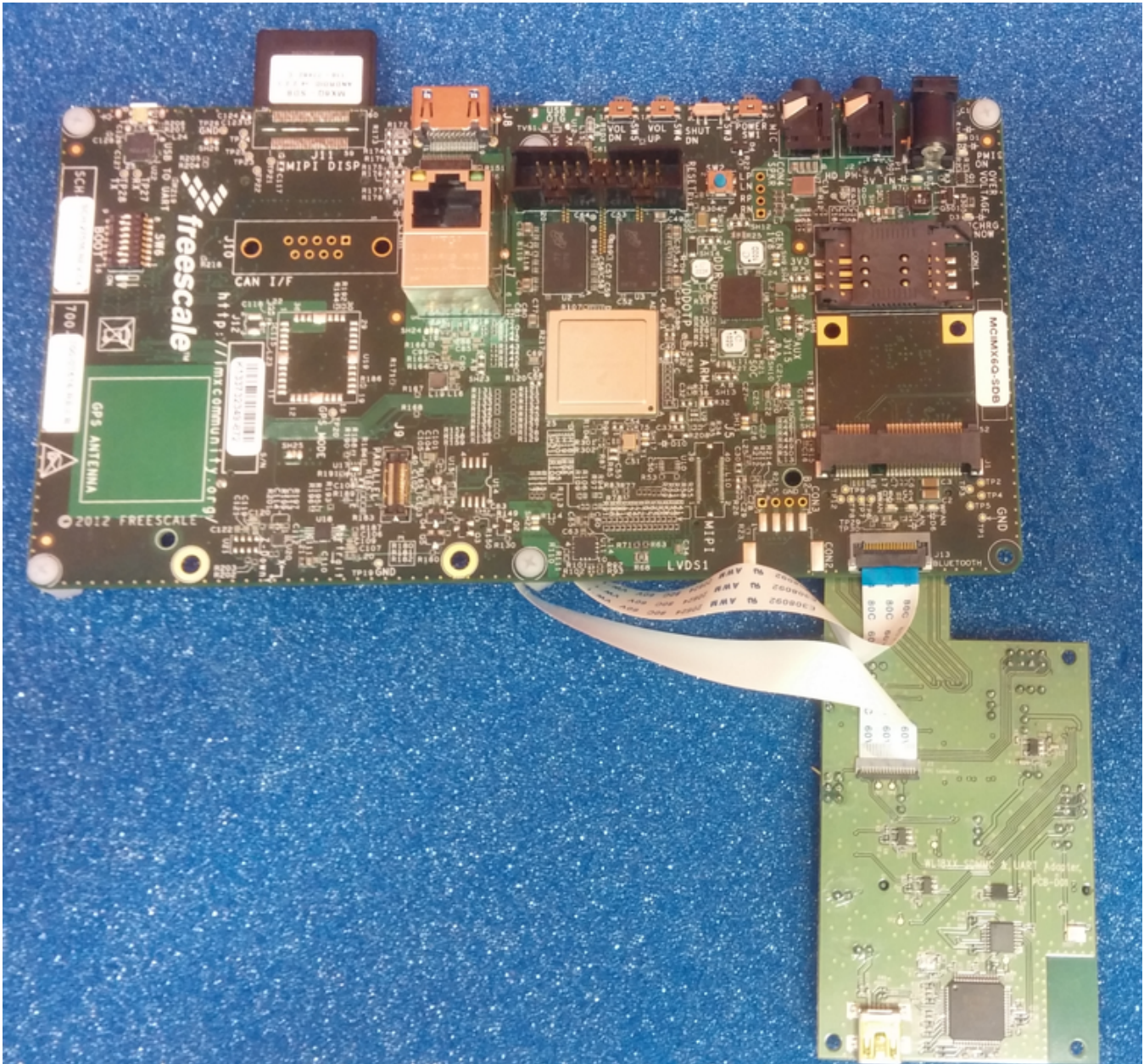


Figure 12. Connection Diagram (Bottom)

5 Revision History

Date	Revision	Details
January 2015	*	Initial Release

IMPORTANT NOTICE

Texas Instruments Incorporated and its subsidiaries (TI) reserve the right to make corrections, enhancements, improvements and other changes to its semiconductor products and services per JESD46, latest issue, and to discontinue any product or service per JESD48, latest issue. Buyers should obtain the latest relevant information before placing orders and should verify that such information is current and complete. All semiconductor products (also referred to herein as "components") are sold subject to TI's terms and conditions of sale supplied at the time of order acknowledgment.

TI warrants performance of its components to the specifications applicable at the time of sale, in accordance with the warranty in TI's terms and conditions of sale of semiconductor products. Testing and other quality control techniques are used to the extent TI deems necessary to support this warranty. Except where mandated by applicable law, testing of all parameters of each component is not necessarily performed.

TI assumes no liability for applications assistance or the design of Buyers' products. Buyers are responsible for their products and applications using TI components. To minimize the risks associated with Buyers' products and applications, Buyers should provide adequate design and operating safeguards.

TI does not warrant or represent that any license, either express or implied, is granted under any patent right, copyright, mask work right, or other intellectual property right relating to any combination, machine, or process in which TI components or services are used. Information published by TI regarding third-party products or services does not constitute a license to use such products or services or a warranty or endorsement thereof. Use of such information may require a license from a third party under the patents or other intellectual property of the third party, or a license from TI under the patents or other intellectual property of TI.

Reproduction of significant portions of TI information in TI data books or data sheets is permissible only if reproduction is without alteration and is accompanied by all associated warranties, conditions, limitations, and notices. TI is not responsible or liable for such altered documentation. Information of third parties may be subject to additional restrictions.

Resale of TI components or services with statements different from or beyond the parameters stated by TI for that component or service voids all express and any implied warranties for the associated TI component or service and is an unfair and deceptive business practice. TI is not responsible or liable for any such statements.

Buyer acknowledges and agrees that it is solely responsible for compliance with all legal, regulatory and safety-related requirements concerning its products, and any use of TI components in its applications, notwithstanding any applications-related information or support that may be provided by TI. Buyer represents and agrees that it has all the necessary expertise to create and implement safeguards which anticipate dangerous consequences of failures, monitor failures and their consequences, lessen the likelihood of failures that might cause harm and take appropriate remedial actions. Buyer will fully indemnify TI and its representatives against any damages arising out of the use of any TI components in safety-critical applications.

In some cases, TI components may be promoted specifically to facilitate safety-related applications. With such components, TI's goal is to help enable customers to design and create their own end-product solutions that meet applicable functional safety standards and requirements. Nonetheless, such components are subject to these terms.

No TI components are authorized for use in FDA Class III (or similar life-critical medical equipment) unless authorized officers of the parties have executed a special agreement specifically governing such use.

Only those TI components which TI has specifically designated as military grade or "enhanced plastic" are designed and intended for use in military/aerospace applications or environments. Buyer acknowledges and agrees that any military or aerospace use of TI components which have **not** been so designated is solely at the Buyer's risk, and that Buyer is solely responsible for compliance with all legal and regulatory requirements in connection with such use.

TI has specifically designated certain components as meeting ISO/TS16949 requirements, mainly for automotive use. In any case of use of non-designated products, TI will not be responsible for any failure to meet ISO/TS16949.

Products

Audio	www.ti.com/audio
Amplifiers	amplifier.ti.com
Data Converters	dataconverter.ti.com
DLP® Products	www.dlp.com
DSP	dsp.ti.com
Clocks and Timers	www.ti.com/clocks
Interface	interface.ti.com
Logic	logic.ti.com
Power Mgmt	power.ti.com
Microcontrollers	microcontroller.ti.com
RFID	www.ti-rfid.com
OMAP Applications Processors	www.ti.com/omap
Wireless Connectivity	www.ti.com/wirelessconnectivity

Applications

Automotive and Transportation	www.ti.com/automotive
Communications and Telecom	www.ti.com/communications
Computers and Peripherals	www.ti.com/computers
Consumer Electronics	www.ti.com/consumer-apps
Energy and Lighting	www.ti.com/energy
Industrial	www.ti.com/industrial
Medical	www.ti.com/medical
Security	www.ti.com/security
Space, Avionics and Defense	www.ti.com/space-avionics-defense
Video and Imaging	www.ti.com/video

TI E2E Community

e2e.ti.com