

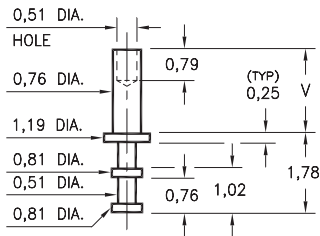
MALE PCB PINS

SOLDER TERMINAL TURRETS

2111

2111-X-00-XX-00-00-07-0

Swage mount in 0,84 hole

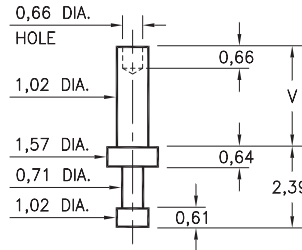


Basic Part Number	Board Thickness	Length V
2111-1	0,79	1,35
2111-2	1,57	2,13
2111-3	2,39	2,92

2113

2113-X-00-XX-00-00-07-0

Swage mount in 1,09 hole

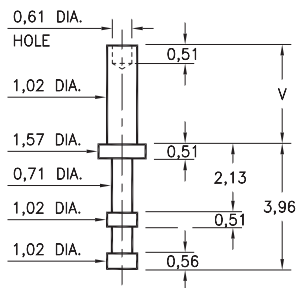


Basic Part Number	Board Thickness	Length V
2113-1	0,79	1,35
2113-2	1,57	2,13
2113-3	2,39	2,92
2113-4	3,18	3,73

2108

2108-X-00-XX-00-00-07-0

Swage mount in 1,09 hole

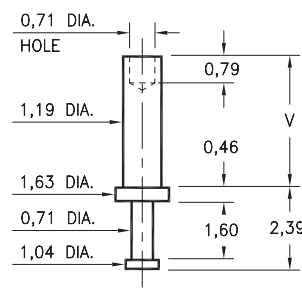


Basic Part Number	Board Thickness	Length V
2108-1	0,79	1,35
2108-2	1,57	2,13
2108-3	2,39	2,92
2108-4	3,18	3,73

2102

2102-X-00-XX-00-00-07-0

Swage mount in 1,32 hole

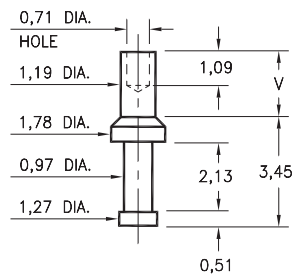


Basic Part Number	Board Thickness	Length V
2102-5	0,41	0,89
2102-1	0,79	1,37
2102-2	1,57	2,13
2102-3	2,39	2,92
2102-4	3,18	3,73

2109

2109-X-00-XX-00-00-07-0

Swage mount in 1,32 hole



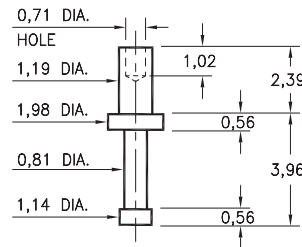
Basic Part Number	Board Thickness	Length V
2109-1	0,79	1,32
2109-2	1,57	2,16

2324

2324-2-00-XX-00-00-07-0

Swage mount in 1,32 hole

For a 1,57 thick board



SPECIFICATIONS:

Pin Material: Brass Alloy 360, 1/2 Hard
(Swage pins are annealed)

Dimensions: Millimeters

Tolerances On: Lengths: $\pm 0,13$
Diameters: $\pm 0,051$
Angles: $\pm 2^\circ$



ORDER CODE: XXXX - X - 00 - XX - 00 - 00 - 07 - 0

BASIC PART #

SPECIFY PIN FINISH:

- 01 5,08 μ m TIN/LEAD OVER NICKEL
- ◆ 80 5,08 μ m TIN OVER NICKEL (RoHS)
- ◆ 44 7,62 μ m SILVER OVER COPPER (RoHS)
- 50 7,62 μ m ELECTRO-SOLDER
(60/40 SnPb)



Mouser Electronics

Authorized Distributor

Click to View Pricing, Inventory, Delivery & Lifecycle Information:

[Mill-Max:](#)

[2108-2-00-44-0000-07-0](#)