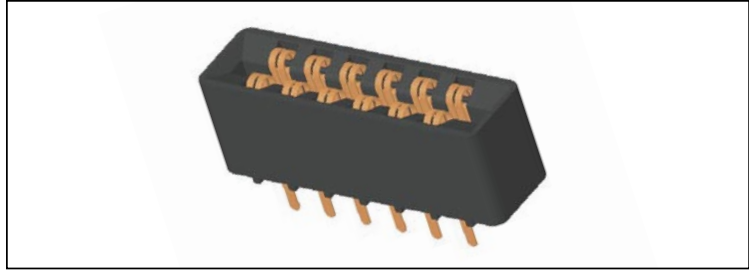
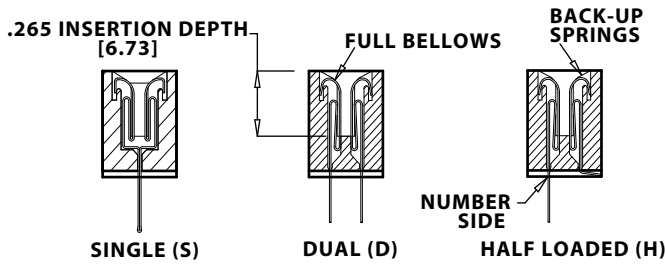


FEATURES

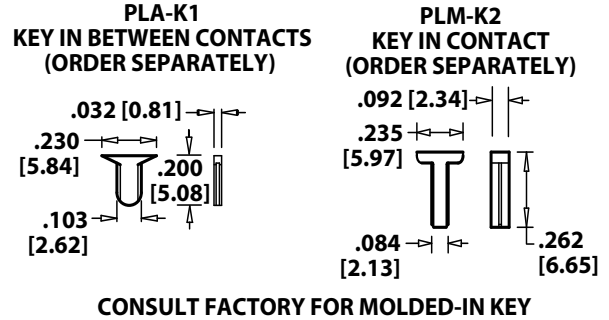
- * Accommodates .062 ± .008" PC board
- * Molded-in key available
- * 3 amp current rating
- * 30 milli ohm maximum at rated current



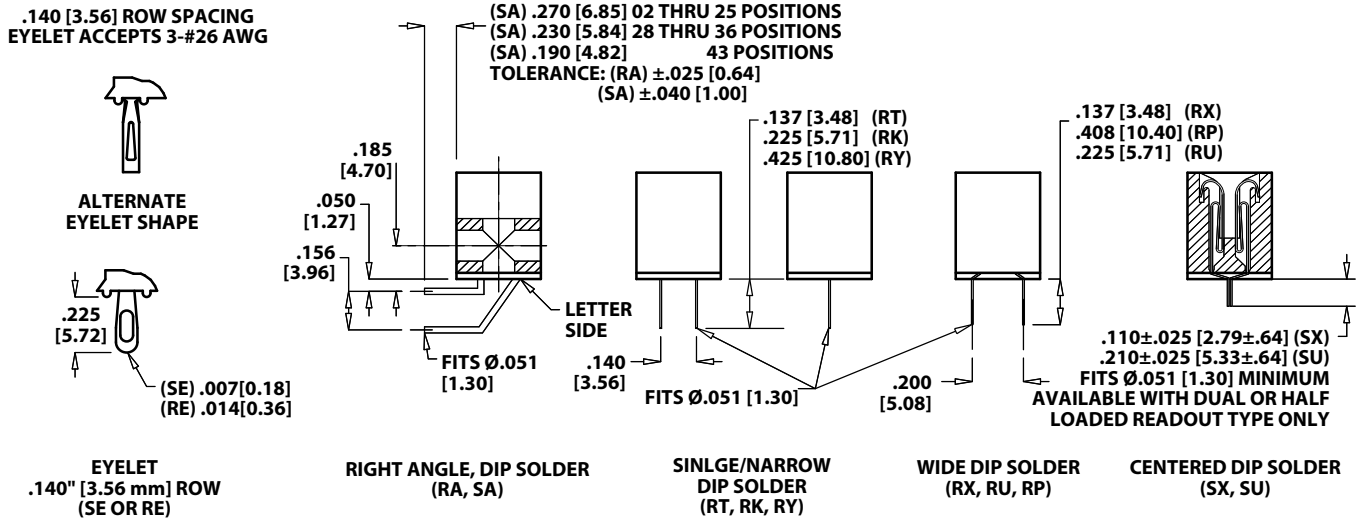
READOUT



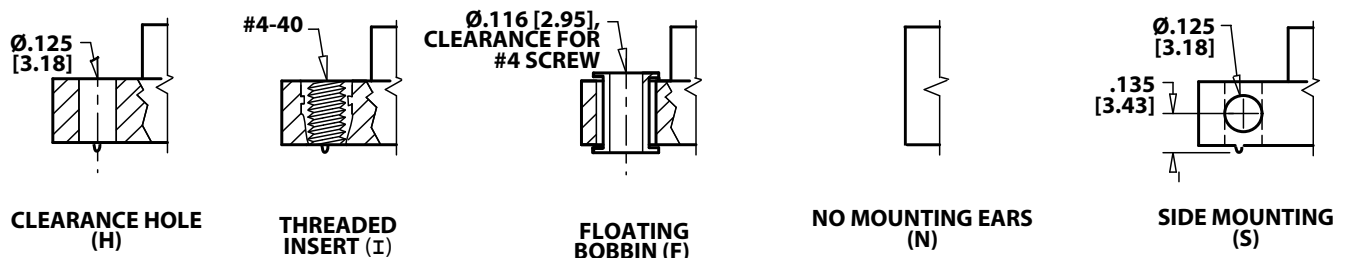
POLARIZING KEY



TERMINATION TYPE



MOUNTING STYLE



PART NUMBER CODING*

MATERIALS (Insulator/Contact)

- E = PBT/Phosphor Bronze (Standard)
- H = PBT/Beryllium Copper
- C = PPS/Beryllium Nickel (Consult Factory)
- W = PEEK/Beryllium Nickel (Consult Factory)
- F = PPS/Spinodal** (Consult Factory)(Overall Gold Plating Only)
- R = PPS/Phosphor Bronze
- A = PPS/Beryllium Copper
- G = PA9T/Phosphor Bronze
- J = PA9T/Beryllium Copper (Consult Factory for Other Materials)

CONTACT FINISH (All platings have .000050" Nickel underplate)

	Contact Surface	Termination
G	.000010" Gold	.000005" Gold
Y	.000030" Gold	.000005" Gold
B	.000010" Gold	.000100" Pure Tin, Matte‡
C	.000030" Gold	.000100" Pure Tin, Matte‡
	Contact Surface	Overall Plating
S	.000010" Gold	.000010" Gold
M	.000030" Gold	.000010" Gold
E	.000100" Pure Tin, Matte	.000100" Pure Tin, Matte‡

‡ = Lead Free

CONTACT CENTERS
M = .156" [3.96mm]

MODIFICATION CODE (Consult Factory)
Omit For Standard

MOUNTING STYLE (Opposite Page)

- H = .125" [3.18mm] Clearance Holes
- N = No Mounting
- S = Side Mounting
- I = Threaded Insert
- F = Floating Bobbin

TERMINATION TYPE (Opposite Page)

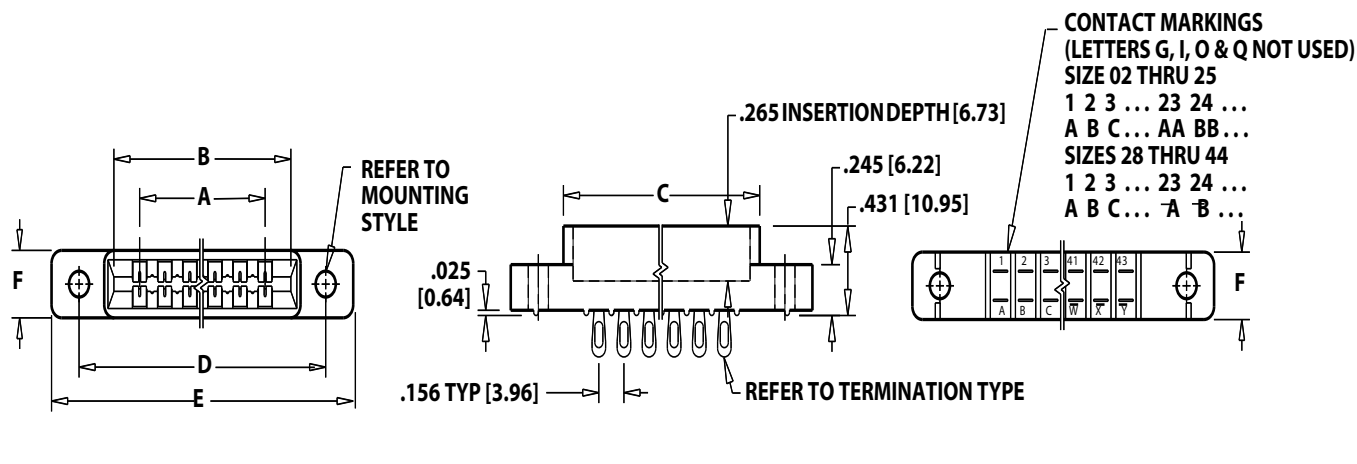
- RA = .125" Right Angle Dip Solder
- SA = Long Right Angle Dip Solder
- RT = Single/.140" x .137" Dip Solder
- RK = Single/.140" x .225" Dip Solder
- RY = .140" x .425" Dip Solder
- RX = .200" x .137" Dip Solder
- RU = .200" x .225" Dip Solder
- RP = .200" x .408" Dip Solder
- SX = .110" [2.79 mm] Centered Dip Solder
- SU = .210" [5.33 mm] Centered Dip Solder
- SE = .007" [.18 mm] Thick Eyelet .140" x .225"
- RE = .014" [.36 mm] Thick Eyelet .140" x .225"

READOUT (Opposite Page)

- D = Dual
- S = Single (Available with Overall Plating and RT, RK, RE Termination Only)
- H = Half Loaded

NUMBER OF CONTACT POSITIONS
02 thru 44

DIMENSIONS (Dimensions in [] are in Millimeters, all others are in inches)



POSITIONS/ CONTACTS	INCHES					MILLIMETERS						
	A±.008	B±.008	C±.015	D±.010	E MAX	F±.005	A±0.20	B±0.20	C±0.38	D±0.25	E MAX	F±0.13
2/4	0.156	0.476	0.596	'N' MOUNTING			3.96	12.09	15.14	'N' MOUNTING		
3/6	0.312	0.632	0.752	'N' MOUNTING			7.92	16.05	19.10	'N' MOUNTING		
6/12	0.780	1.100	1.220	1.533	1.875	0.325	19.81	27.94	30.99	38.94	47.63	8.26
8/16	1.092	1.412	1.532	1.845	2.187		27.74	35.86	38.91	46.86	55.55	
10/20	1.404	1.724	1.844	2.157	2.499		35.66	43.79	46.84	54.79	63.47	
11/22	1.560	1.880	2.000	2.313	2.655		39.62	47.75	50.80	58.75	67.44	
12/24	1.716	2.036	2.156	2.469	2.811		43.59	51.71	54.76	62.71	71.40	
15/30	2.184	2.504	2.624	2.937	3.279		55.47	63.60	66.65	74.60	83.29	
18/36	2.652	2.972	3.092	3.405	3.747		67.36	75.49	78.54	86.49	95.17	
22/44	3.276	3.596	3.716	4.029	4.371		83.21	91.34	94.39	102.34	111.02	
24/48	3.588	3.908	4.028	4.341	4.683		91.14	99.26	102.31	110.26	118.95	
25/50	3.744	4.064	4.184	4.497	4.839		95.10	103.23	106.27	114.22	122.91	
28/56	4.212	4.532	4.652	4.965	5.307	0.438	106.98	115.11	118.16	126.11	134.80	11.13
36/72	5.460	5.780	5.900	6.213	6.555		138.68	146.81	149.86	157.81	166.50	
43/86	6.552	6.872	6.992	7.305	7.647	0.500	166.42	174.55	177.60	185.55	194.23	12.70
44/88	6.708	7.028	7.148	7.461	7.803		170.38	178.51	181.56	189.51	198.20	

* For Complete Part Number add readout, termination type and mounting style from Part Number Coding (e.g. EBM43DRKH)

** Request special soldering instruction before use of Spinodal material. Low tin solder, non-aggressive flux, and special soldering method required.