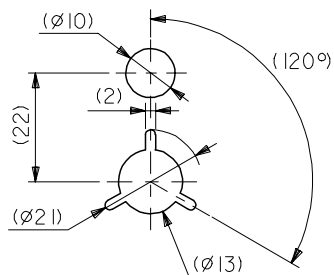


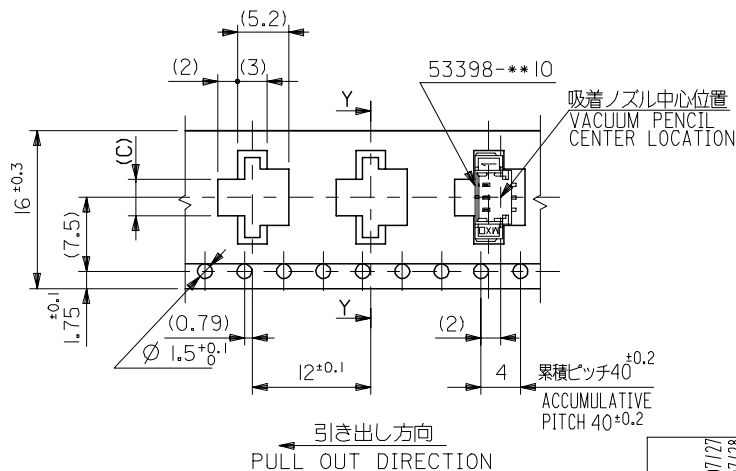


10 9 8 7 6 5 4 3 2 1

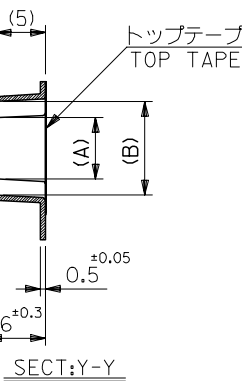
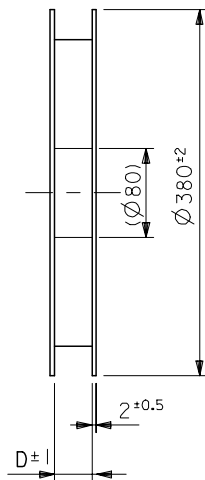
引き出し方向  
PULL OUT DIRECTION



DETAIL "F"



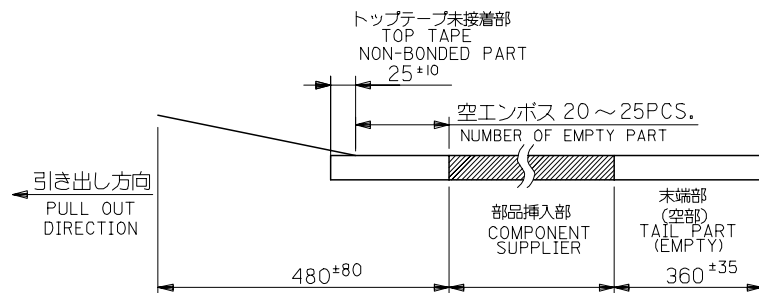
16幅テープ  
(TAPE WIDTH:16)



### NOTES

1. 梱包数量:1000個/リール  
NUMBER OF CONNECTOR:1000PCS/REEL

2. リードテープ長さ  
LEAD TAPE LENGTH



3. トップテープの剥離強度:0.6±0.35N(60±35gf) (剥離方向は下図参照)  
PEELING OFF FORCE OF TOP TAPE:0.6±0.35N(60±35gf)  
(PEELING DIRECTION IS SHOWN IN FOLLOWING FIG.)

<剥離速度:300mm/min(参考)>  
PEELING SPEED:300mm/min.  
(REFERENCE)



4. 53398-\*\*10の詳細寸法については図面SD-53398-\*\*10を参照下さい。  
RE DETAILED DIMENSIONS,SEE SD-53398-\*\*10.

5. 材料 (MATERIAL)  
キャリアテープ(CARRIER TAPE):ポリプロピレン(POLYPROPYLENE)  
トップテープ (TOP TAPE): PET ,PE ,PEF  
リール (REEL):ポリスチレン (PS) <リサイクル材含む>  
POLYSTYREN(PS) <RECYCLE MATERIAL CONTAINED>

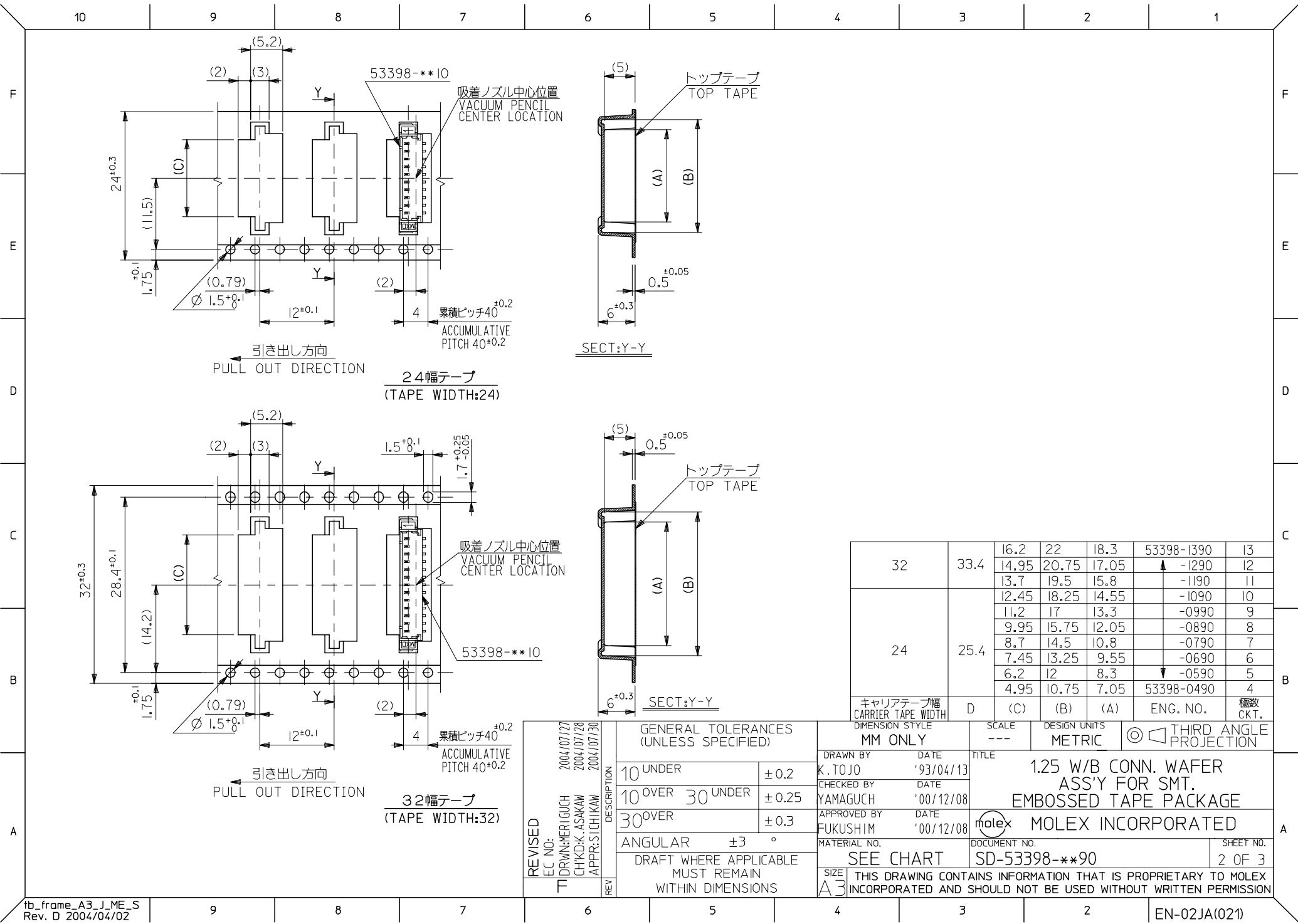
16	17.4	3.7	9.5	5.8	53398-0390	3
キャリアテープ幅 CARRIER TAPE WIDTH	D	2.45	8.25	4.55	53398-0290	2
		(C)	(B)	(A)	ENG. NO.	種数 CKT.

DIMENSION STYLE	SCALE	DESIGN UNITS	THIRD ANGLE PROJECTION
MM ONLY	---	METRIC	

DRAWN BY K. TOJO	DATE '93/04/13	TITLE 1.25 W/B CONN. WAFER ASS'Y FOR SMT. EMBOSSD TAPE PACKAGE
CHECKED BY YAMAGUCHI	DATE '00/12/08	
APPROVED BY FUKUSHIM	DATE '00/12/08	MOLEX INCORPORATED

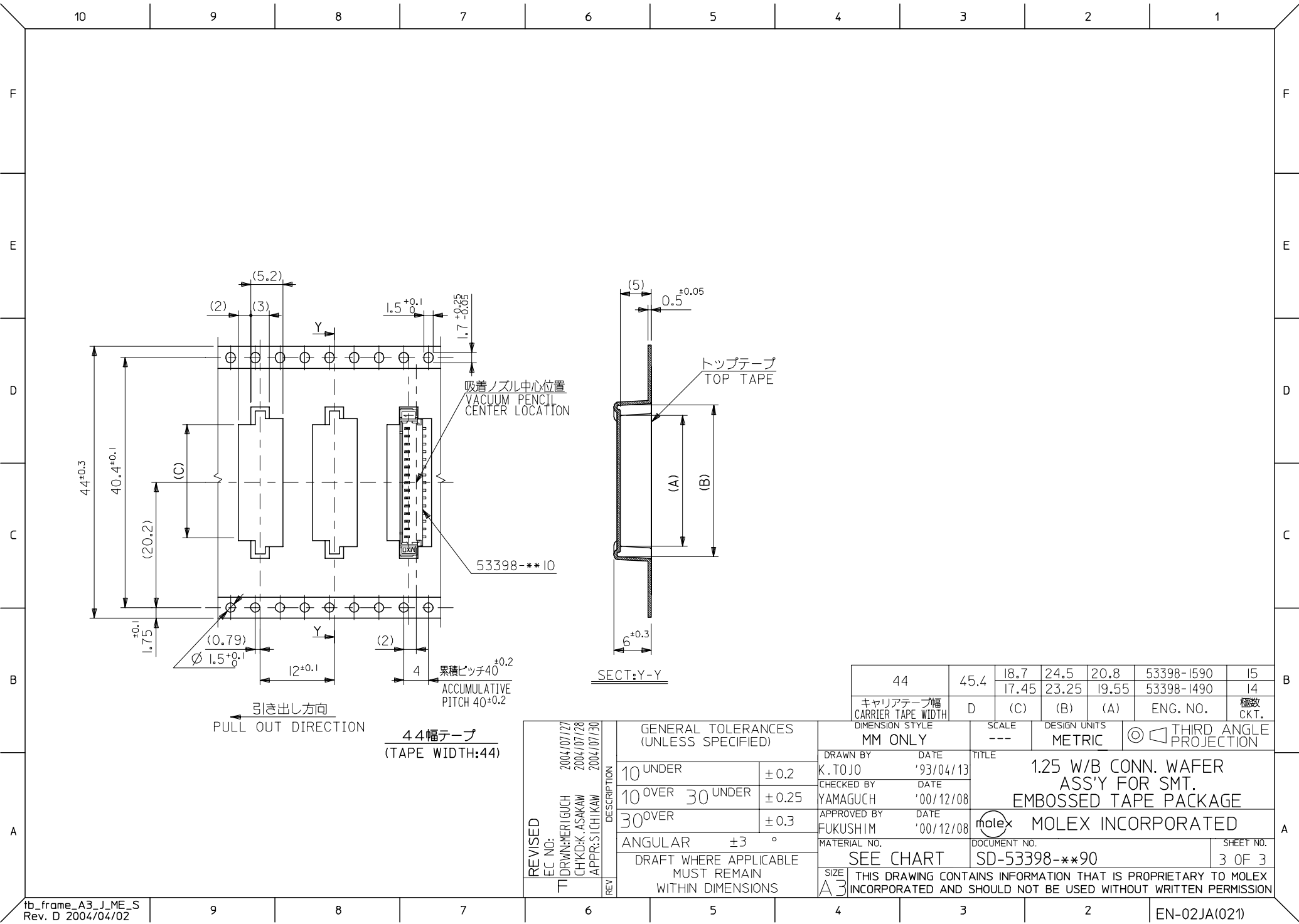
MATERIAL NO.	DOCUMENT NO.	SHEET NO.
SEE CHART	SD-53398-**90	1 OF 3

THIS DRAWING CONTAINS INFORMATION THAT IS PROPRIETARY TO MOLEX INCORPORATED AND SHOULD NOT BE USED WITHOUT WRITTEN PERMISSION



32	33.4	16.2	22	18.3	53398-1390	13
		14.95	20.75	17.05	▲ -1290	12
		13.7	19.5	15.8	▲ -1190	11
24	25.4	12.45	18.25	14.55	▲ -1090	10
		11.2	17	13.3	▲ -0990	9
		9.95	15.75	12.05	▲ -0890	8
		8.7	14.5	10.8	▲ -0790	7
		7.45	13.25	9.55	▲ -0690	6
		6.2	12	8.3	▼ -0590	5
		4.95	10.75	7.05	53398-0490	4
		キャリアテープ幅 CARRIER TAPE WIDTH	D	(C)	(B)	(A)

REVISED EC NO: T DRAWN:MERIGUCHI CHKD:K.ASAKAW APPR:SIKAW REV	DESCRIPTION 2004/07/27 2004/07/28 2004/07/30	GENERAL TOLERANCES (UNLESS SPECIFIED)		DIMENSION STYLE MM ONLY		SCALE ---	DESIGN UNITS METRIC	THIRD ANGLE PROJECTION		
		10 UNDER	± 0.2	DRAWN BY K. TOJO	DATE '93/04/13	TITLE 1.25 W/B CONN. WAFER ASS'Y FOR SMT. EMBOSSED TAPE PACKAGE				
		10 OVER 30 UNDER	± 0.25	CHECKED BY YAMAGUCHI	DATE '00/12/08					
		30 OVER	± 0.3	APPROVED BY FUKUSHIM	DATE '00/12/08	molex MOLEX INCORPORATED				
		ANGULAR	±3 °	MATERIAL NO.		DOCUMENT NO.		SHEET NO.		
		DRAFT WHERE APPLICABLE MUST REMAIN WITHIN DIMENSIONS		SEE CHART		SD-53398-**90		2 OF 3		
		THIS DRAWING CONTAINS INFORMATION THAT IS PROPRIETARY TO MOLEX INCORPORATED AND SHOULD NOT BE USED WITHOUT WRITTEN PERMISSION								



44	45.4	18.7	24.5	20.8	53398-I590	I5
キャリアテープ幅 CARRIER TAPE WIDTH	D	17.45	23.25	19.55	53398-I490	I4
	(C)	(B)	(A)	ENG. NO.	種数 CKT.	

REVISED EC NO: T DRAWN:MERIGUCH CHKD:K. ASAKAW APPR:SIKAW 2004/07/27 2004/07/28 2004/07/30	DESCRIPTION REV	GENERAL TOLERANCES (UNLESS SPECIFIED)		DIMENSION STYLE MM ONLY		SCALE ---	DESIGN UNITS METRIC	THIRD ANGLE PROJECTION	
		10 UNDER	± 0.2	DRAWN BY K. TOJO	DATE '93/04/13	TITLE 1.25 W/B CONN. WAFER ASS'Y FOR SMT. EMBOSSED TAPE PACKAGE			
		10 OVER 30 UNDER	± 0.25	CHECKED BY YAMAGUCH	DATE '00/12/08				
		30 OVER	± 0.3	APPROVED BY FUKUSHIM	DATE '00/12/08	molex MOLEX INCORPORATED			
		ANGULAR	±3 °	MATERIAL NO.		DOCUMENT NO.		SHEET NO.	
		DRAFT WHERE APPLICABLE MUST REMAIN WITHIN DIMENSIONS		SEE CHART		SD-53398-**90		3 OF 3	
				SIZE A3	THIS DRAWING CONTAINS INFORMATION THAT IS PROPRIETARY TO MOLEX INCORPORATED AND SHOULD NOT BE USED WITHOUT WRITTEN PERMISSION				

# Mouser Electronics

Authorized Distributor

Click to View Pricing, Inventory, Delivery & Lifecycle Information:

[Molex:](#)

[53398-0390](#)