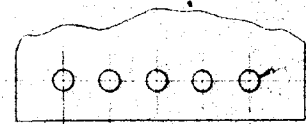


PART NO. SEE CHART  
SDA-2599-NA\*



RECOMMENDED PCB BOARD HOLE DIMENSIONS

SEE NOTE 1  
SLIGHT SAW BURR PERMITTED ON TOP & SIDE EDGES - BOTH ENDS

10-19-1181	A-2599-18A	18	3.400	3.568	
1171	A-2599-17A	17	3.200	3.368	
1161	A-2599-16A	16	3.000	3.168	
1151	A-2599-15A	15	2.800	2.968	
1141	A-2599-14A	14	2.600	2.768	
1131	A-2599-13A	13	2.400	2.568	
1121	A-2599-12A	12	2.200	2.368	
1111	A-2599-11A	11	2.000	2.168	
1101	A-2599-10A	10	1.800	1.968	
1091	A-2599-9A	9	1.600	1.768	
1081	A-2599-8A	8	1.400	1.568	
1071	A-2599-7A	7	1.200	1.368	
1061	A-2599-6A	6	1.000	1.168	
1051	A-2599-5A	5	.800	.968	
1041	A-2599-4A	4	.600	.768	
1031	A-2599-3A	3	.400	.568	
10-19-1021	A-2599-2A	2	.200	.368	
PART NO	ENG NO	NO OF CIRCUITS	DIM. A	DIM. B	

FOR VOID LOC. SEE CHART ON SHEET 2

- NOTES:
- A) 1. PIN PUSH OUT FORCE: 3 LBS. MIN.
  2. BURRS NOT TO EXTEND BELOW SURFACE D.
  3. CODE LETTER PRECEDING PART NO. INDICATES MFG LOCATION - I - IRELAND
  4. PARTS TO MEET MOLEX PRODUCT SPEC 0-39

WAFER MATERIAL: NYLON-NATURAL COLOR .200 CENTER DISTANCE

UNLESS OTHERWISE SPECIFIED TOLERANCES: 3-PLACE DEC. DIMS ±.008 2-PLACE DEC. DIMS ±.010 FRACTIONAL DIMS ±1/64 ANGULAR ±1/2°	DATE: 1-13-72 SHEET 2 OF 2 SDA-2599-NA*
DRAW WHERE APPLICABLE MUST REMAIN WITHIN DIMENSIONS, UNLESS OTHERWISE SPECIFIED. DO NOT SCALE DRAWING	THIS DRAWING CONTAINS INFORMATION THAT IS PROPRIETARY TO THE MOLEX PRODUCTS COMPANY AND SHOULD NOT BE USED WITHOUT WRITTEN PERMISSION.

REVISIONS:  
2-72 100% 100%  
4-72 TFS/LER  
ECO \* 612  
A DATED NOTE 1  
3/5/72 JLL/ER  
80% REV 100%  
200 ± .010  
200 ± .010

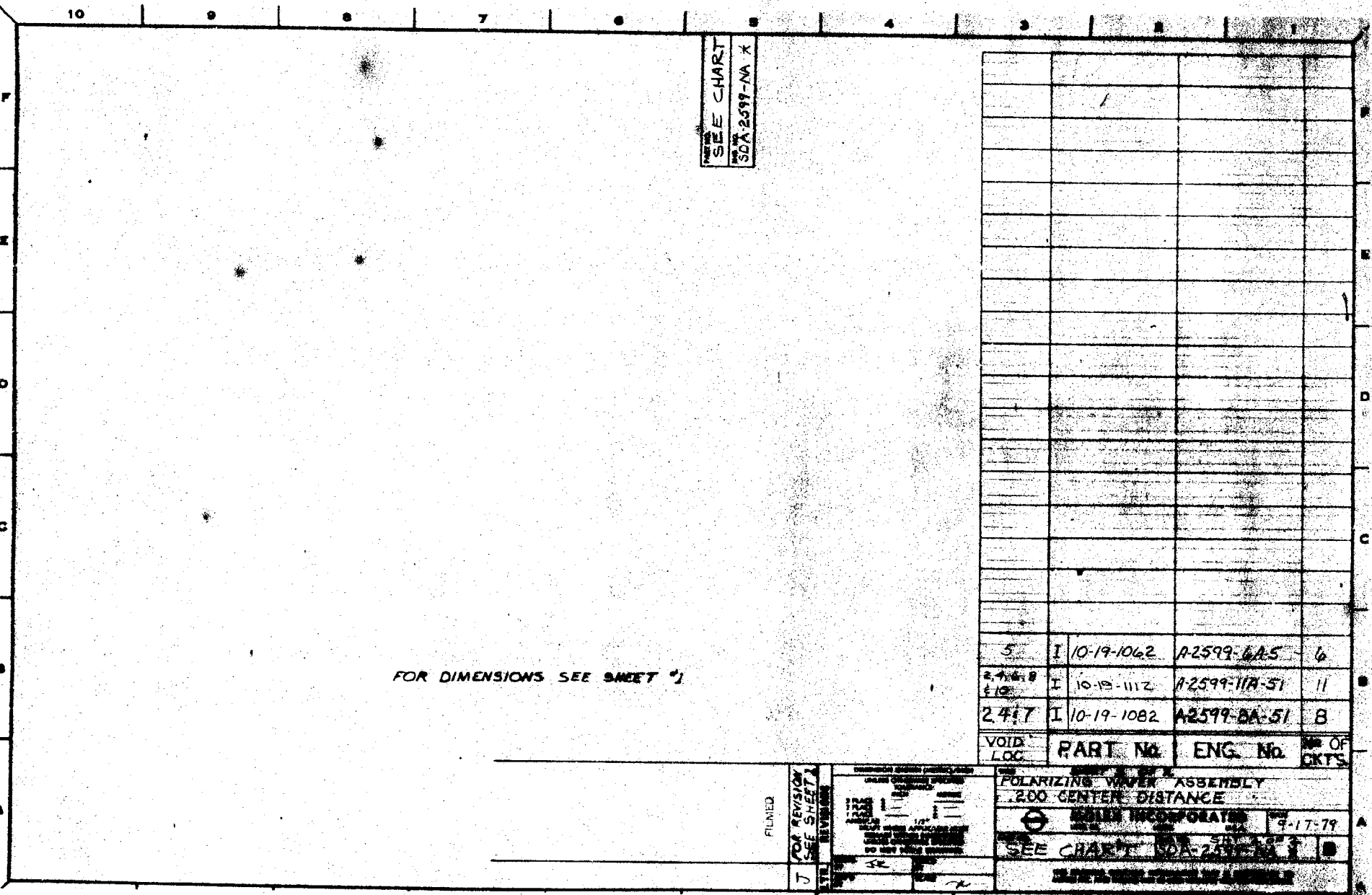
WAS 1.005  
C/A WAS 1.005  
WAS 1.005  
WAS 1.005 PER ECO  
LAG 1.005

REVISIONS:  
2-72 100% 100%  
4-72 TFS/LER  
ECO \* 612  
A DATED NOTE 1  
3/5/72 JLL/ER  
80% REV 100%  
200 ± .010  
200 ± .010

UNLESS OTHERWISE SPECIFIED TOLERANCES:  
3-PLACE DEC. DIMS ±.008  
2-PLACE DEC. DIMS ±.010  
FRACTIONAL DIMS ±1/64  
ANGULAR ±1/2°

DRAW WHERE APPLICABLE MUST REMAIN WITHIN DIMENSIONS, UNLESS OTHERWISE SPECIFIED.  
DO NOT SCALE DRAWING

THIS DRAWING CONTAINS INFORMATION THAT IS PROPRIETARY TO THE MOLEX PRODUCTS COMPANY AND SHOULD NOT BE USED WITHOUT WRITTEN PERMISSION.



SEE CHART  
SOX-2599-NA-X

FOR DIMENSIONS SEE SHEET #1

VOID LOC	PART No.	ENG. No.	NO OF CKTS.
5	I 10-19-1062	A-2599-6A-5	6
2.417 B E10	I 10-19-1112	A-2599-11A-51	11
2.417	I 10-19-1082	A-2599-8A-51	B

FILMED FOR REVISION SEE SHEET A J REVISE	<b>POLARIZING WAVE ASSEMBLY</b> .200 CENTER DISTANCE SOLEN INCORPORATED 9-17-79 SEE CHART SOX-2599-NA-X
---	---

# Mouser Electronics

Authorized Distributor

Click to View Pricing, Inventory, Delivery & Lifecycle Information:

[Molex:](#)

[10-19-1091](#)