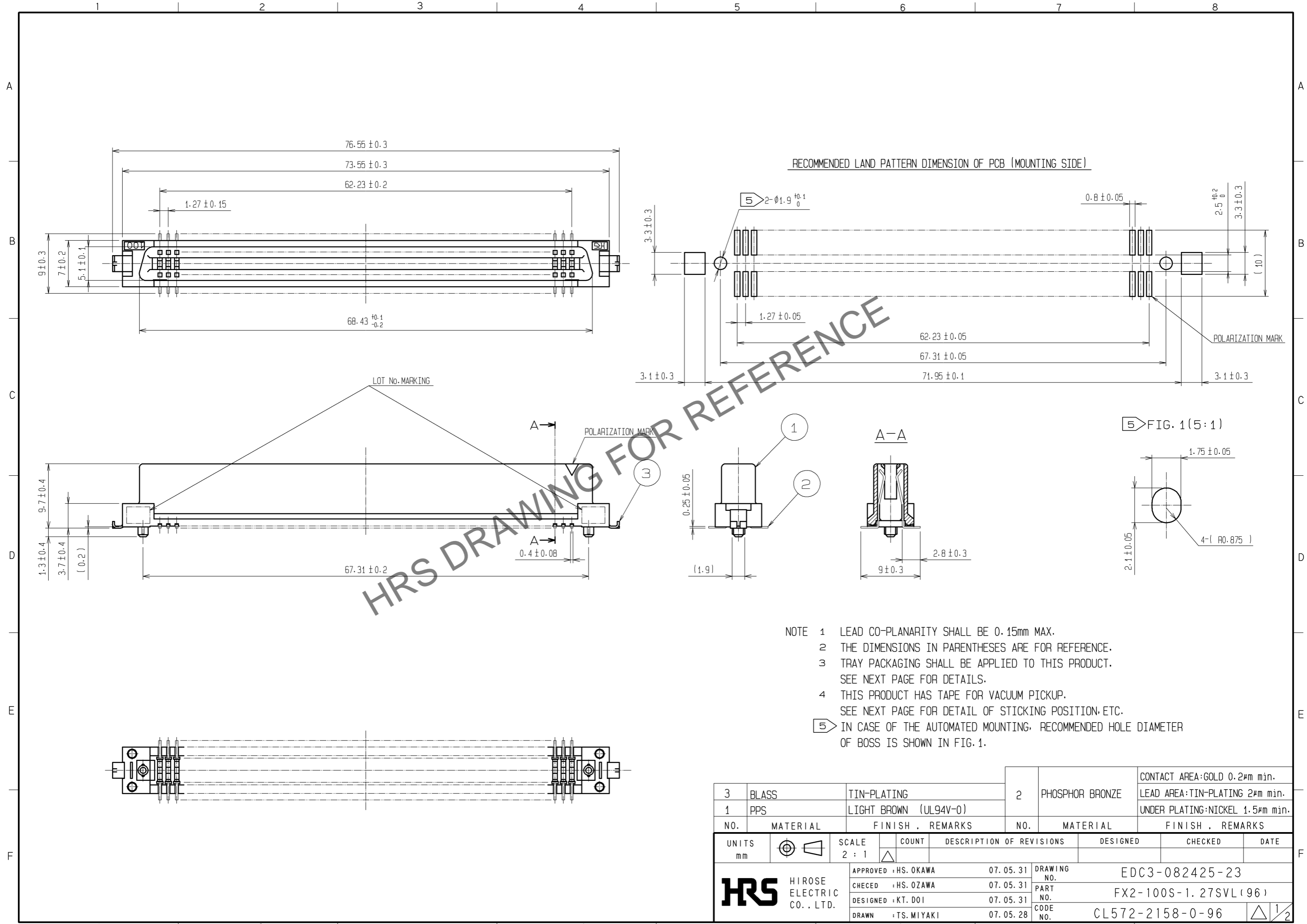


Jul.1.2024 Copyright 2024 HIROSE ELECTRIC CO., LTD. All Rights Reserved.  
 In case of consideration for using Automotive equipment / device which demand high reliability, kindly contact our sales window correspondents.



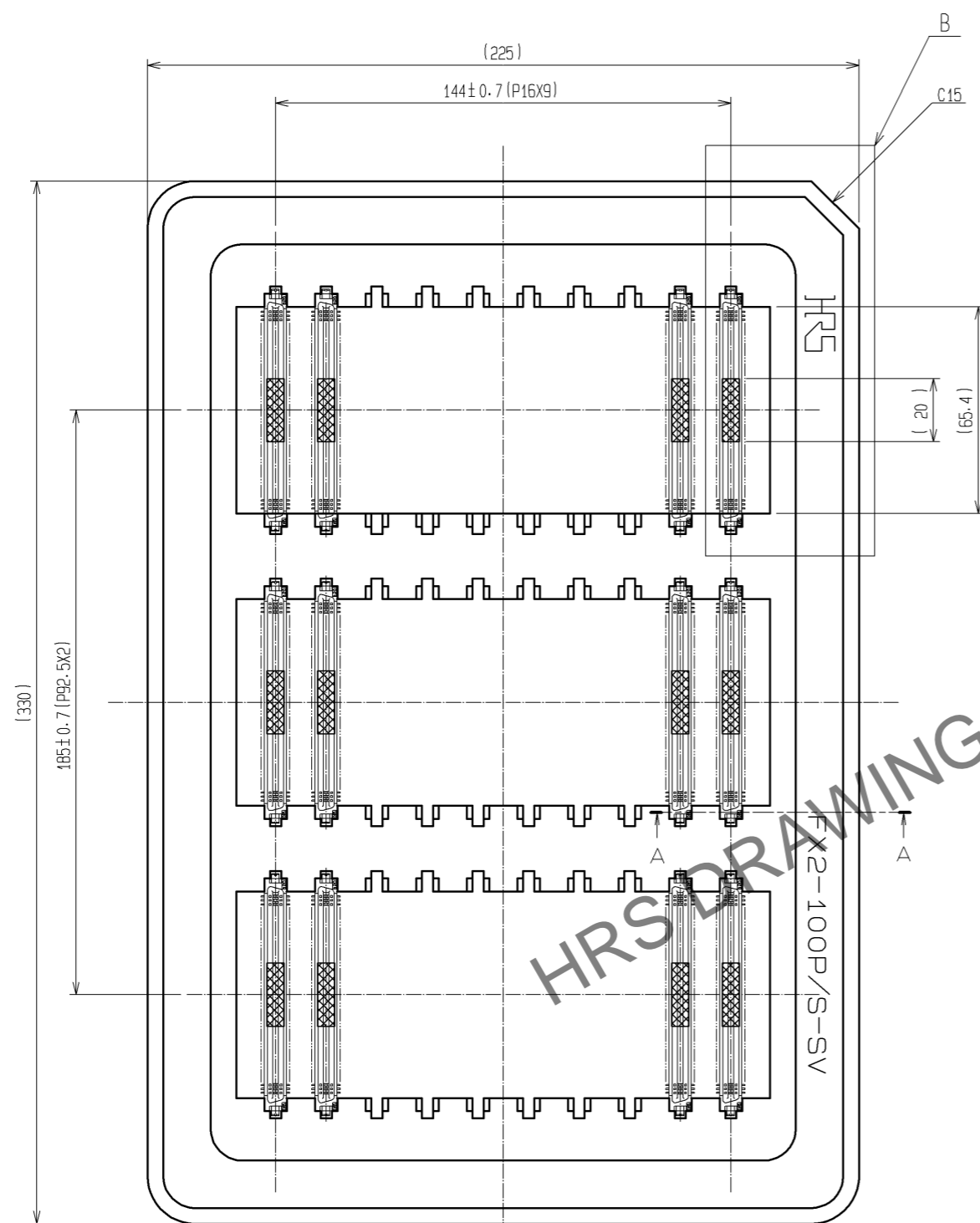
HRS DRAWING FOR REFERENCE

- NOTE
- 1 LEAD CO-PLANARITY SHALL BE 0.15mm MAX.
  - 2 THE DIMENSIONS IN PARENTHESES ARE FOR REFERENCE.
  - 3 TRAY PACKAGING SHALL BE APPLIED TO THIS PRODUCT. SEE NEXT PAGE FOR DETAILS.
  - 4 THIS PRODUCT HAS TAPE FOR VACUUM PICKUP. SEE NEXT PAGE FOR DETAIL OF STICKING POSITION, ETC.
- 5 IN CASE OF THE AUTOMATED MOUNTING, RECOMMENDED HOLE DIAMETER OF BOSS IS SHOWN IN FIG. 1.

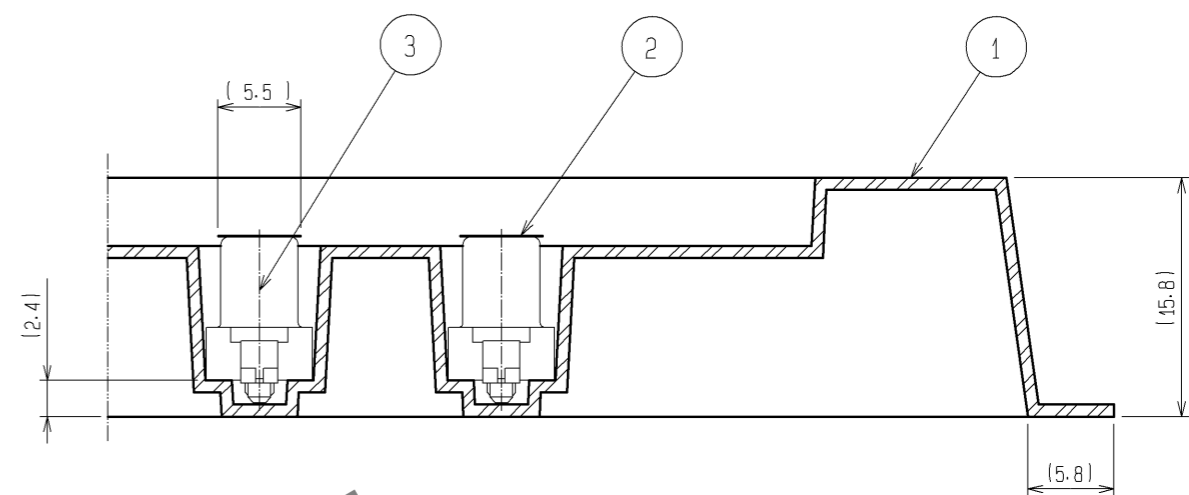
3	BLASS	TIN-PLATING	2	PHOSPHOR BRONZE	CONTACT AREA:GOLD 0.2µm min.			
1	PPS	LIGHT BROWN (UL94V-0)			LEAD AREA:TIN-PLATING 2µm min.			
					UNDER PLATING:NICKEL 1.5µm min.			
NO.	MATERIAL	FINISH . REMARKS	NO.	MATERIAL	FINISH . REMARKS			
UNITS	⊕	SCALE	△	COUNT	DESCRIPTION OF REVISIONS	DESIGNED	CHECKED	DATE
mm		2 : 1						
<b>HRS</b> HIROSE ELECTRIC CO., LTD.		APPROVED : HS. OKAWA	07.05.31	DRAWING NO. EDC3-082425-23				
		CHECED : HS. OZAWA	07.05.31	PART NO. FX2-100S-1.27SVL(96)				
		DESIGNED : KT. DOI	07.05.31	CODE NO. CL572-2158-0-96				
		DRAWN : TS. MIYAKI	07.05.28					

Jul.1.2024 Copyright 2024 HIROSE ELECTRIC CO., LTD. All Rights Reserved.  
 In case of consideration for using Automotive equipment / device which demand high reliability, kindly contact our sales window correspondents.

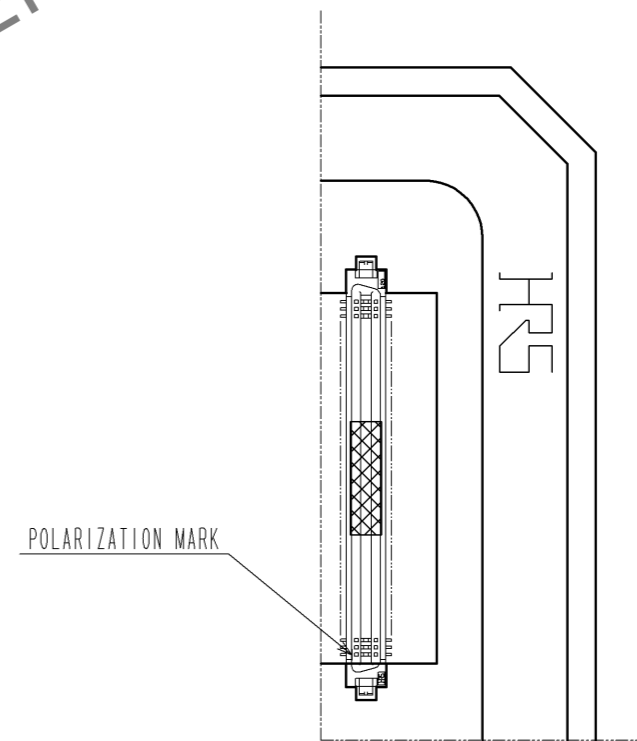
DRAWING FOR PACKING



A-A (2:1)



B (FREE)



- NOTE
- 1 1 TRAY:30 CONNECTORS
  - 2 SETTING POSITION OF CONNECTORS IN THE TRAY SHALL BE ARRANGED IN ACCORDANCE WITH DRAWING.
  - 3 REMOVE THE VACUUM PICK-UP TAPE AFTER MOUNTING THE CONNECTOR.
  - 4 THE DIMENSIONS IN PARENTHESES ARE FOR REFERENCE.

2	POLYIMIDE	(TAPE FOR VACUUM PICK-UP)				
1	PS	TRAY	3			(CONNECTOR)
NO.	MATERIAL	FINISH . REMARKS	NO.	MATERIAL	FINISH . REMARKS	
UNITS	mm	SCALE	COUNT	DESCRIPTION OF REVISIONS		DESIGNED
		1 : 2	△			CHECKED
HIROSE ELECTRIC CO., LTD.		APPROVED : HS. OKAWA	07.05.31	DRAWING NO.		EDC3-082425-23
		CHECED : HS. OZAWA	07.05.31	PART NO.		FX2-100S-1.27SVL(96)
		DESIGNED : KT. DOI	07.05.31	CODE NO.		CL572-2158-0-96
		DRAWN : TS. MIYAKI	07.05.28			△ 2/2