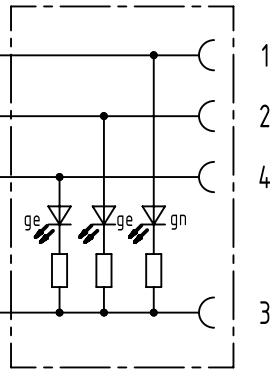


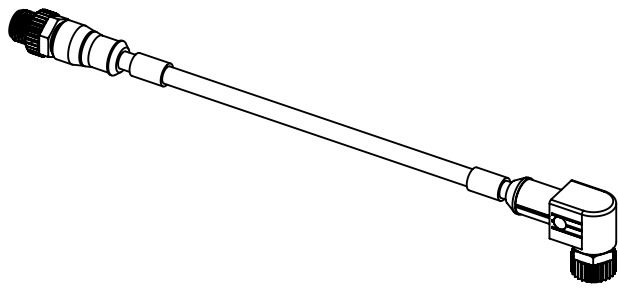
schematic diagram

1		Litze braun (+) / flexible conductor brown (+)
2		Litze weiss (Ö) / flexible conductor white (O)
4		Litze schwarz (S) / flexible conductor black (S)
3		Litze blau (-) / flexible conductor blue (-)



Halogen-free PUR-conductor 4x0,34mm<sup>2</sup>  
black with approval according to UL/CSA

21034157401	0.3m
21034157402	0.6m
21034157403	1.0m
21034157404	1.5m
21034157405	2.0m
part No.	nominal length (L)



	All Dimensions in mm Original Size DIN A4	Scale 1:1	Free size tol.		Ref.
	All rights reserved Department EC PD - DE	Created by DYCKC	Inspected by WELLMANN	Standardisation HOFFMANN	Date 2013-10-07
HARTING Electronics GmbH D-32339 Espelkamp		Title HARTING M12 male straight/ female angled			State Final Release
		Type TB	Number 21034157400		Doc-Key / ECM-Nr. 100093116/UGD/007/B 500000066884
					Rev. B
					Page 1/1