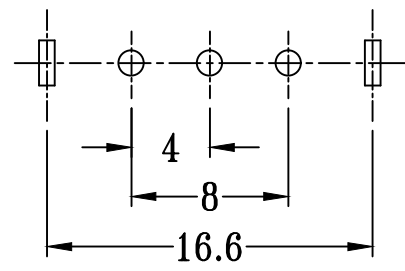
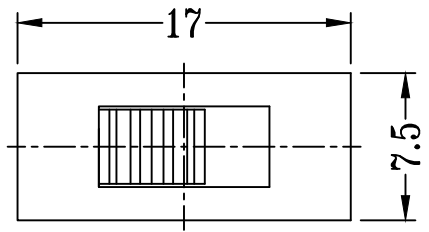
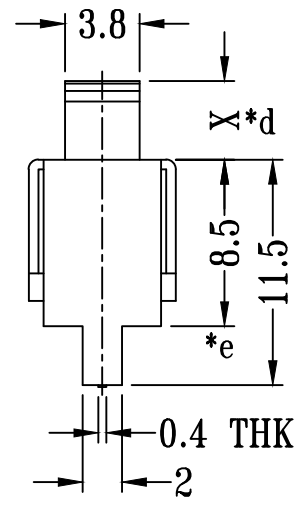
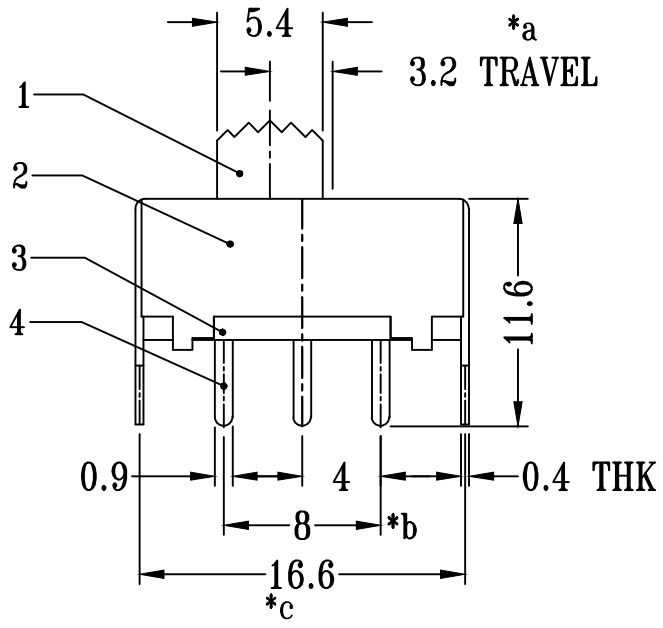
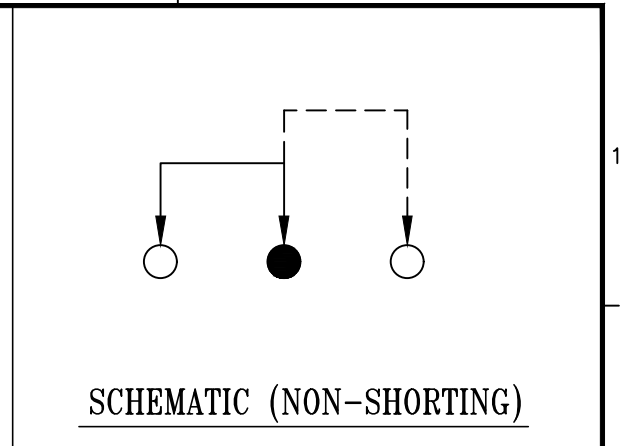


A B C D E



**P.C.B LAYOUT
BOTTOM VIEW**



SS-12F02-GXXX
直柄 G-Switch P/N

- G=020 (2.0) G=030 (3.0)
- G=040 (4.0) G=050 (5.0)
- G=055 (5.5) G=060 (6.0)
- G=065 (6.5) G=070 (7.0)
- G=075 (7.5) G=080 (8.0)
- G=085 (8.5) G=090 (9.0)
- G=095 (9.5) G=100 (10.0)

G-Switch Specification:
 RATING (额定值) : DC250V 0.5A
 CONTACT RESISTANCE 接触电阻: ≤70mΩ
 INSULATION RESISTANCE 绝缘电阻: ≥100mΩ
 DIELECTRIC STRENGTH 耐电压: AC 500V for 1 minute
 TIMING (时间特性) :SHORTING



		G-Switch Electronic Technology CO.,Ltd.			
					DESIGN 陈锋枫
Unless otherwise specified, Tolerance:		CHECKED	DATE	SS-12F02-GXXX	
X. ±0.30		APPROVED	DATE		
X.x ±0.20		http://www.dg-switch.com			
X.xx ±0.15					
X.xxx ±0.10		REV.: X1	SCALE: 4:1	UNIT: mm	
Angles ±3°		TEL:0769-82388879	SIZE: A4	SHEET: 1/1	

A B C D E