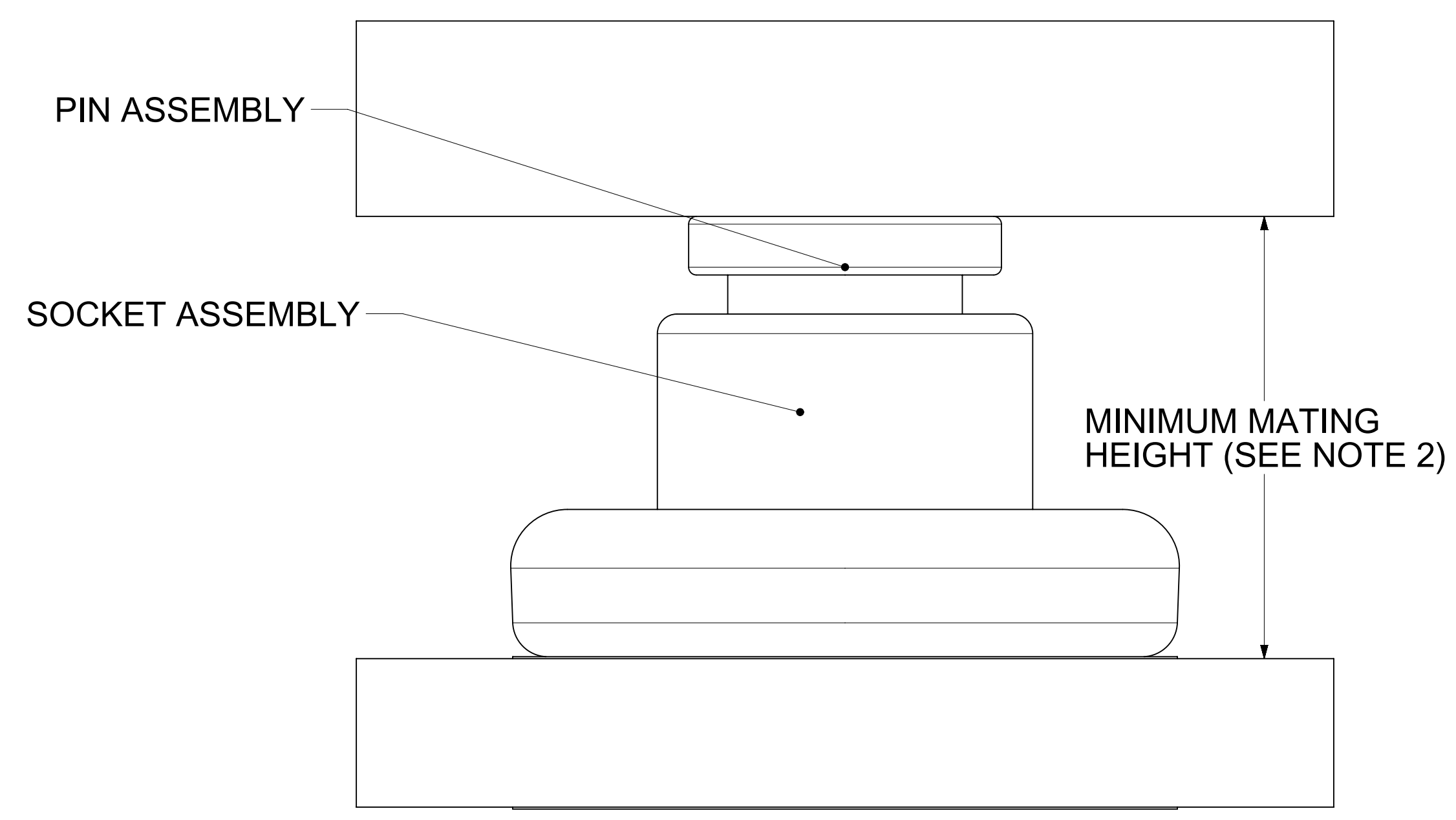


SECTION A-A



MATING PROFILE

NOTES:

- MATERIALS:**
RETENTION CAP: STAINLESS STEEL
PICK AND PLACE CAP: LCP UL94, V-0 COLOR BLACK
BASE METAL: HIGH CONDUCTIVE COPPER ALLOY
PLATING ON CONTACTS: 0.75 MICRON MIN GOLD OVER 1.27 MICRON MIN NICKEL
PLATING ON BODY: 3.18 MICRON MIN SILVER OVER 1.27 MICRON MIN NICKEL
- MATES WITH THE STANDARD PIN DRAWINGS:**
 - 6.0MM SMT DRAWING 2032630136-SD, MIN. MATING DISTANCE 11.57MM
 - 6.0MM PRESS FIT DRAWING 2032630006-SD, MIN. MATING DISTANCE 11.32MM
 - 6.0MM SCREW MOUNT DRAWING 2032636185-SD, MIN. MATING DISTANCE 14.32MM
- PRODUCT SPECIFICATION:** 2043130006-PS
- APPLICATION SPECIFICATION:** 2043130006-AS
- PACKAGING SPECIFICATION:** 2121950016-PK
- SILVER COMPONENTS WILL BE SUPPLIED TARNISH FREE BUT MAY TARNISH OVER TIME.
- PICK AND PLACE CAP TO BE REMOVED AFTER SOLDERING. CAP TO BE PUSHED OUT OF BOTTOM FROM THE TOP.
- DATE CODE TO BE LASER MARKED APPROXIMATELY WHERE SHOWN USING DDDYY FORMAT

THIS DRAWING CONTAINS INFORMATION THAT IS PROPRIETARY TO MOLEX ELECTRONIC TECHNOLOGIES, LLC AND SHOULD NOT BE USED WITHOUT WRITTEN PERMISSION

DIMENSION UNITS	SCALE	CURRENT REV DESC: UPDATED THE TITLE BLOCK		molex			
mm	NTS						
GENERAL TOLERANCES (UNLESS SPECIFIED)				6.0MM SENTRALITY TOP ENTRY SMT SOCKET WITH FLOAT IN T&R			
ANGULAR TOL	± 0.5°	EC NO: 747243		PRODUCT CUSTOMER DRAWING			
4 PLACES	±	DRWN: SACHIK7	2023/02/28	DOCUMENT NUMBER			
3 PLACES	±	CHK'D: SCS02	2023/04/25	DOC TYPE			
2 PLACES	± 0.15	APPR: HTHYAGARAJ	2023/04/26	DOC PART			
1 PLACE	± 0.25	INITIAL REVISION:		REVISION			
0 PLACES	±	DRWN: TOMLU	2019/03/12	2121950016-SD			
		APPR: BPISZCZOR	2019/05/07	PSD 000 B3			
DRAFT WHERE APPLICABLE MUST REMAIN WITHIN DIMENSIONS		THIRD ANGLE PROJECTION	DRAWING	SERIES	MATERIAL NUMBER	CUSTOMER	SHEET NUMBER
			D-SIZE	212195	2121950016	GENERAL MARKET	1 OF 1