



PennEngineering
Corporate Headquarters – Danboro, PA

5190 Old Easton Rd.

Danboro, PA 18916

Phone: 215-766-8853

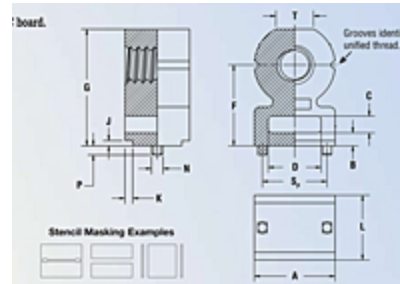
Toll-Free Phone: 1-800-237-4736 (U.S. only)

Email: info@pemnet.com

Website: www.pemnet.com

Part # SMTRA440-9-6ET, Surface Mount R'Angle® Fastener - Unified Type SMTRA

Type SMTRA ReelFast® R'ANGLE® surface mount fasteners provide strong re-usable threads at right angles to PC boards.



Specifications

Thread Size	.112-40 (#4-40)
	.188 in
L - Length ± .005	
Min. Sheet Thickness	.040 in
Hole Size in Sheet + .003 - .000	.053 in
A ± .006	.250 in
B ± .006	.050 in
C ± .006	.065 in
D ± .006	.160 in
F - Height ± .006	.281 in
G ± .006	.390 in
J Nom.	.020 in
K Nom.	.030 in



N Max.	.048 in
P Max.	.040 in
P_A - Pad Width Min.	.294 in
P_L - Pad Length Min.	.171 in
S_p ±.003	.188 in
S_H - Hole Spacing ±.002	.188 in
T Nom.	.125 in
Parts per Reel	300
Pitch	16 mm
Tape Width	24 mm
For Use in Sheet Hardness¹	NOT APPLICABLE
Thread Specification	Internal, ANSI B1.1, 2B
Fastener Material	Zinc Diecast
Standard Finish	Electro-Plated Preservative Tin, ASTM B545, Coating, Class A with Annealed Clear
CAD Supplier	PennEngineering® (PEM®)

¹ HRB - Hardness Rockwell "B" Scale. HB - Hardness Brinell.