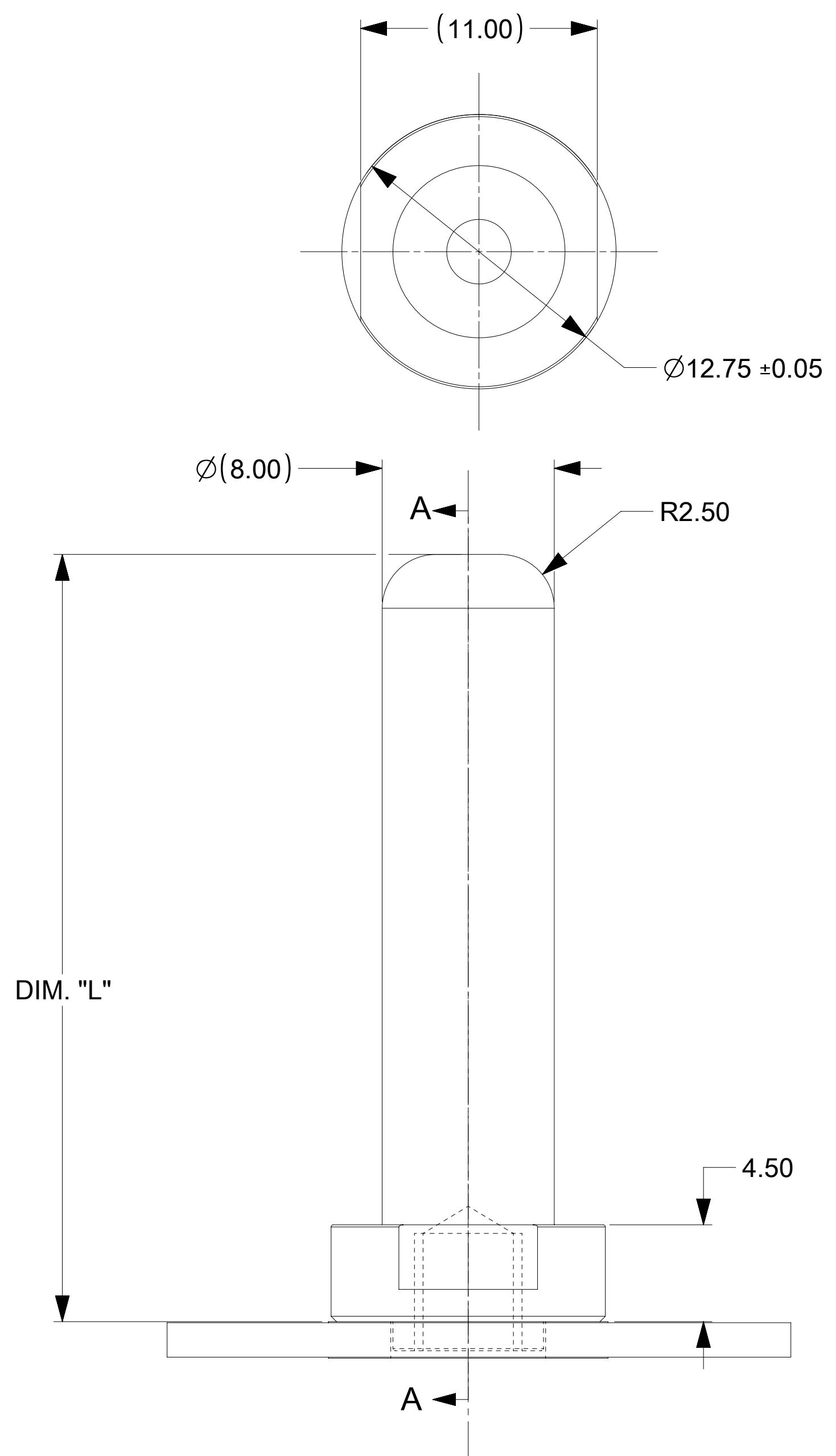
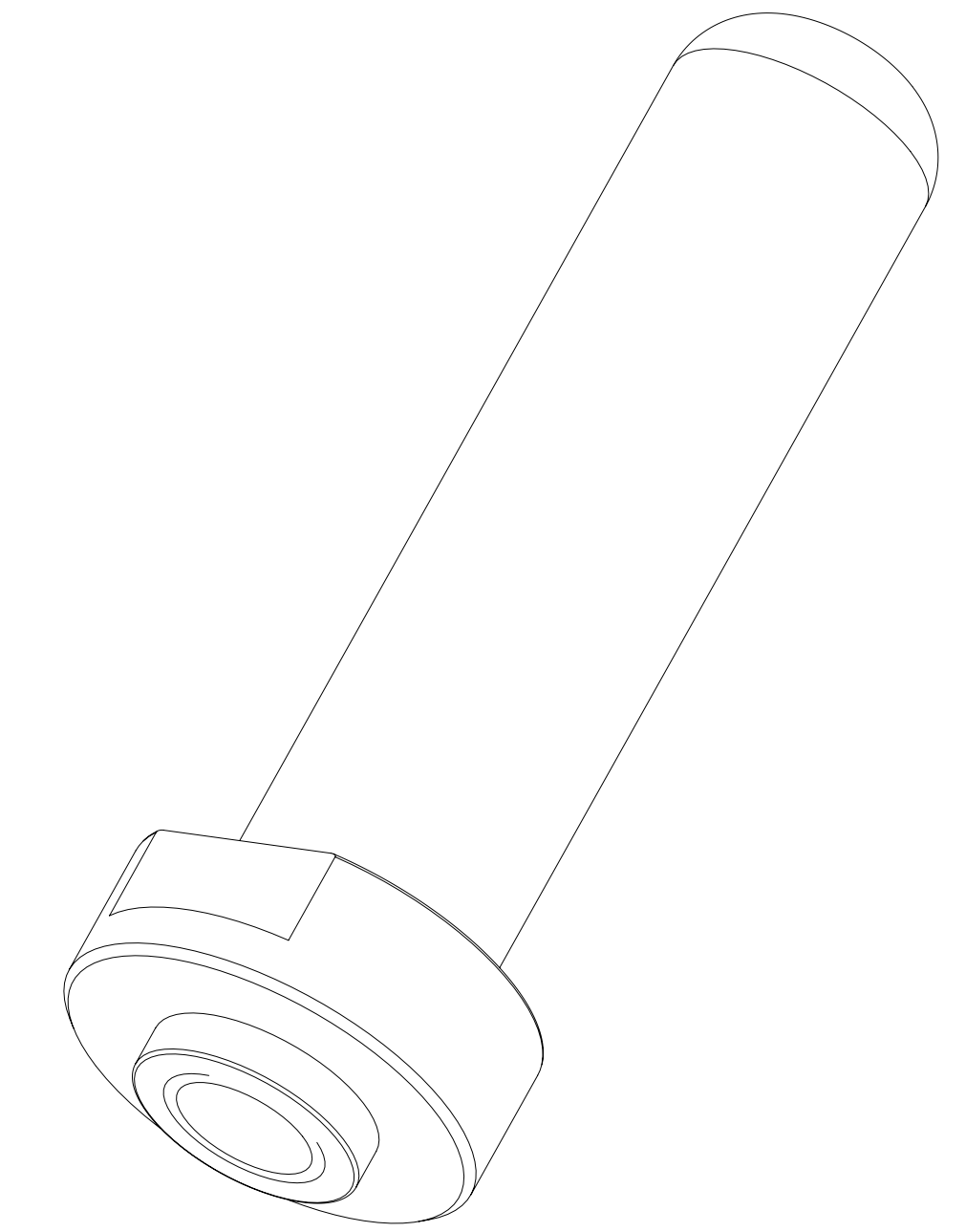
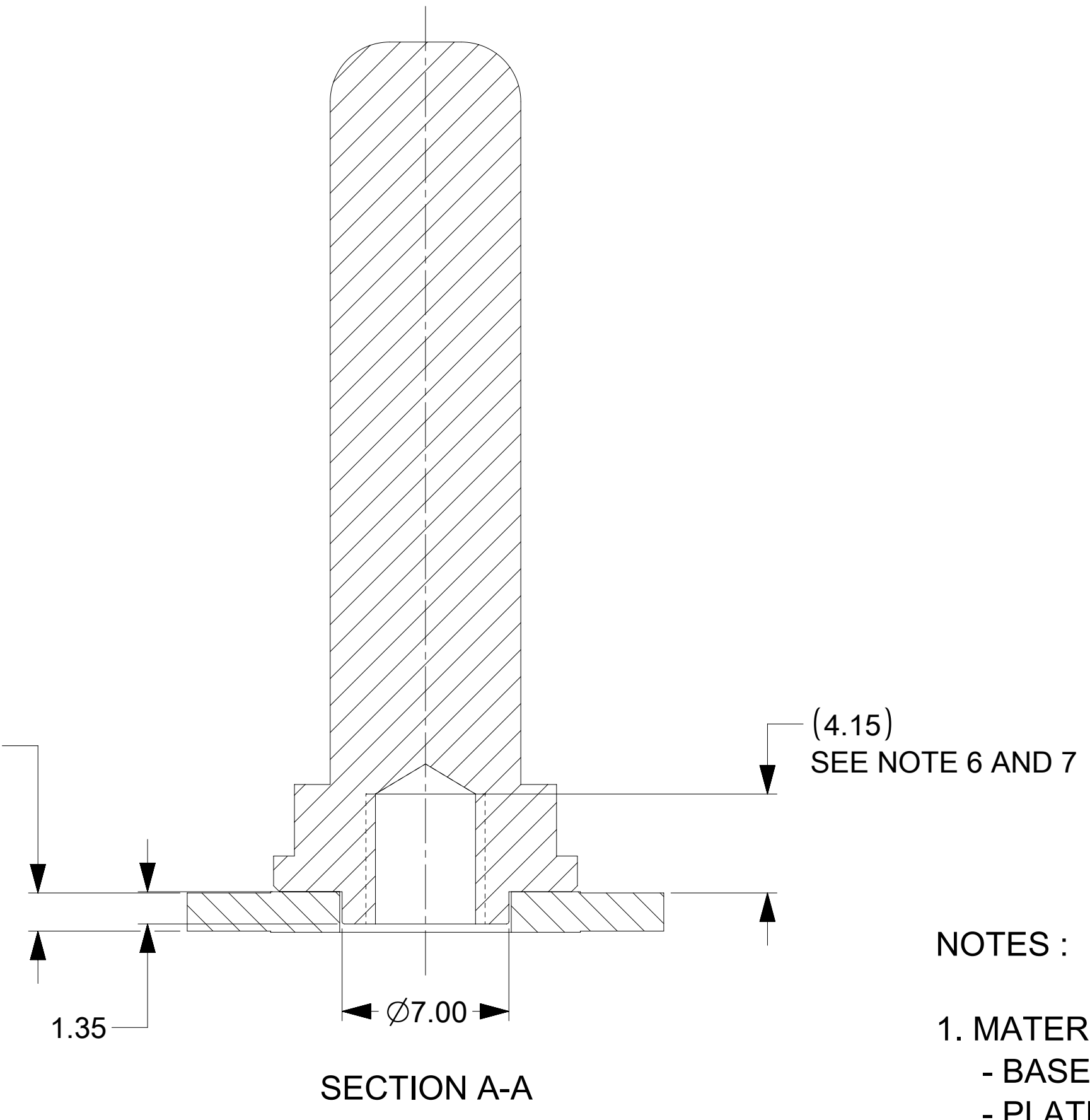


PART NUMBER	DIMENSION "L"
2032635085	46.05
2032635185	36.05
2032635285	21.05
2032635385	31.05
2032635485	29.55
2032635585	28.60
2032635685	37.80
2032635785	46.40
2032635885	47.50
2032635985	40.35



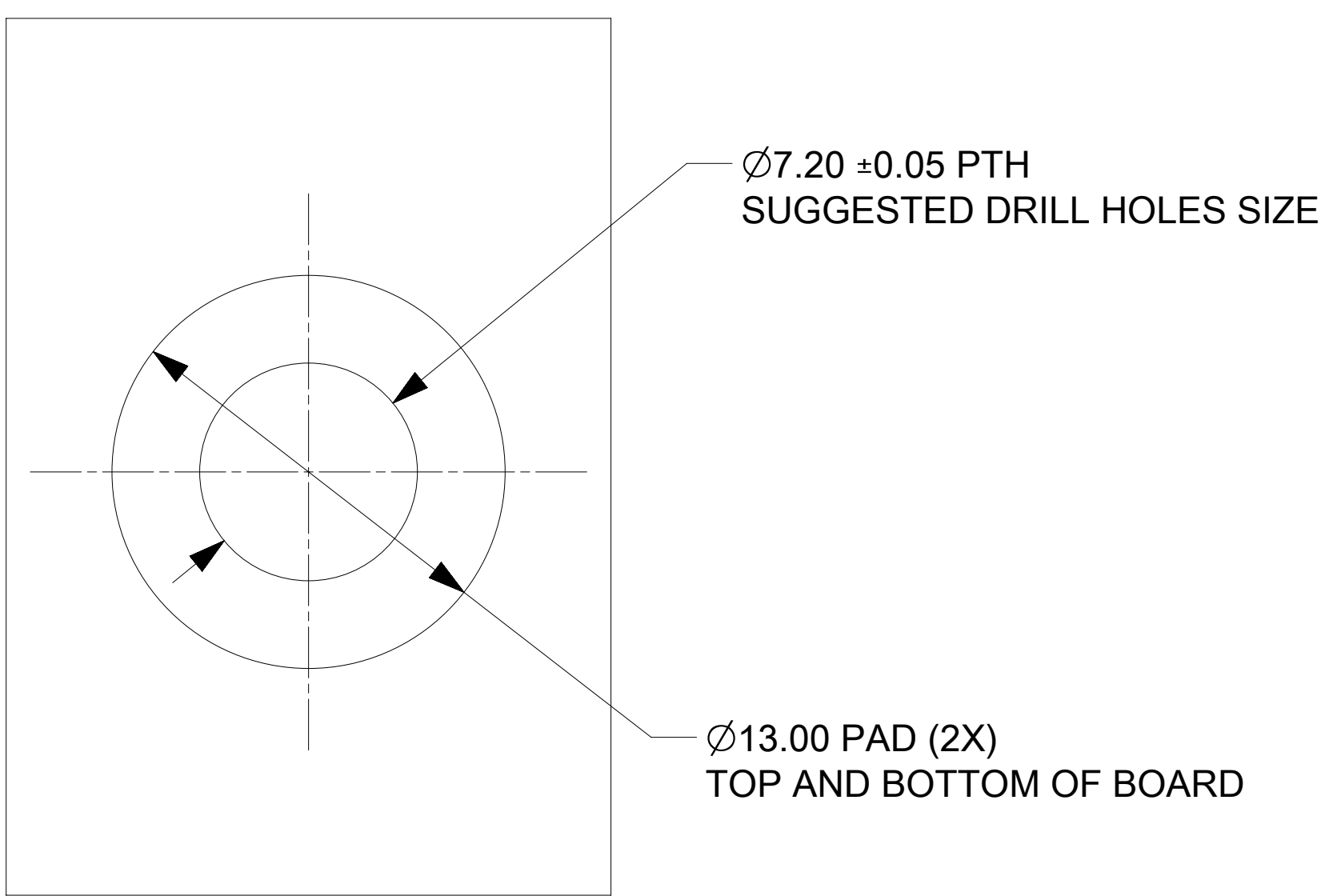
MINIMUM BOARD THICKNESS IS 1.58MM



ISOMETRIC VIEW OF SENTRALITY 8.00MM SCREW MOUNT MALE PIN

NOTES :

- MATERIAL:
 - BASE METAL: HIGH CONDUCTIVE COPPER ALLOY
 - PLATING ON BODY: 3.18 MICRON MIN SILVER OVER 1.27 MICRON MIN NICKEL
- PRODUCT SPECIFICATION : 2043130001-PS
- APPLICATION SPECIFICATION : 2043130001-AS
- PARTS TO BE BULK PACKAGED AS PER PACKAGING SPECIFICATION : 2032630006-PK
- SILVER COMPONENTS WILL BE SUPPLIED TARNISH FREE BUT MAY TARNISH OVER TIME.
- PART TO BE MOUNTED WITH CONDUCTIVE M5 SCREW AND CONDUCTIVE BELLVILLE WASHER FOR OPTIMAL PERFORMANCE
- SCREW LENGTH TO BE DETERMINED BY CUSTOMER, SCREWS AND WASHERS ARE NOT SUPPLIED BY MOLEX.



THIS DRAWING CONTAINS INFORMATION THAT IS PROPRIETARY TO MOLEX ELECTRONIC TECHNOLOGIES, LLC AND SHOULD NOT BE USED WITHOUT WRITTEN PERMISSION											
DIMENSION UNITS mm		SCALE 2:1		CURRENT REV DESC: REMOVED P/NO 203263-1018 AS PER PM REQUEST						molex	
GENERAL TOLERANCES (UNLESS SPECIFIED)				EC NO: 753135							
ANGULAR TOL		± 0.5°		DRWN: ABHIRK		2023/06/13		8MM SENTRALITY MALE TERMINAL SCREW MOUNT			
4 PLACES		±		CHK'D: SUVARS		2023/06/13		PRODUCT CUSTOMER DRAWING			
3 PLACES		±		APPR: HTHYAGARAJ		2023/06/15		DOCUMENT NUMBER			
2 PLACES		± 0.15		INITIAL REVISION:				DOC TYPE		DOC PART	
1 PLACE		± 0.25		DRWN: RLOW		2019/04/26		PSD		000	
0 PLACES		±		APPR: BPISZCZOR		2019/07/30		000		A4	
DRAFT WHERE APPLICABLE MUST REMAIN WITHIN DIMENSIONS				THIRD ANGLE PROJECTION		DRAWING		SERIES		SHEET NUMBER	
				D-SIZE		203263		SEE CHART		1 OF 1	