



Dubox[®]

Product Presentation

Basics Portfolio



Agenda



1. Value Proposition
2. Product Overview
3. Product Specifications
4. Features & Benefits
5. Part Numbers
6. Markets & Applications
7. Marcomm Collaterals

Dubox®



Value Proposition

Dubox® solution is **comprehensive** and **extensive** connector product family designed with solder tails self center on circuit pads to **assure coplanarity** and available with **locating feature** to **maintains alignment** for soldering and facilitates robot placement.

The Dubox® solution includes **through-hole** and **surface-mount** part options with **single** or **double-row**.

The solution includes also **straight** or **right angle** orientation from **2** to **50 positions**.

The Dubox® solution can be used at **3A** per contact as maximum current rating.

To enable **low insertion force** and **high reliable electrical performances** the Dubox® solution has a **dual beam design** and the contact has a pre-stressed.

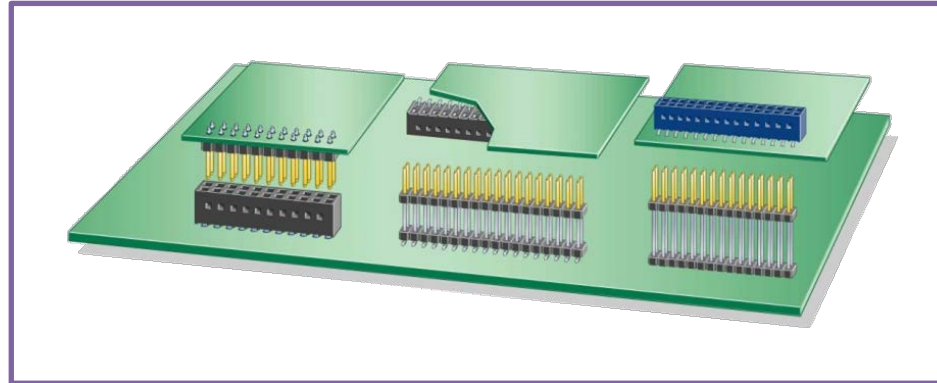
Moreover the 4 wall contact design warranty the **signal protection**.

BTB – WTB – CTB

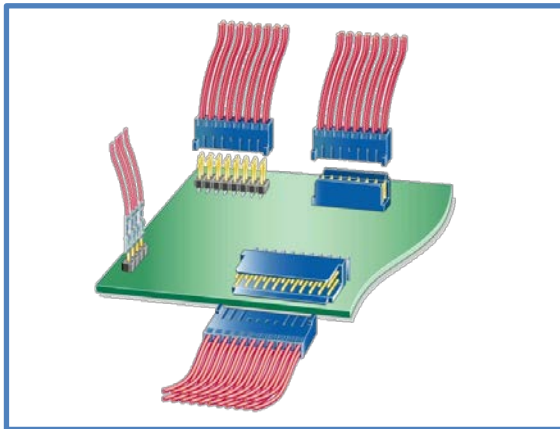
Solution Overview



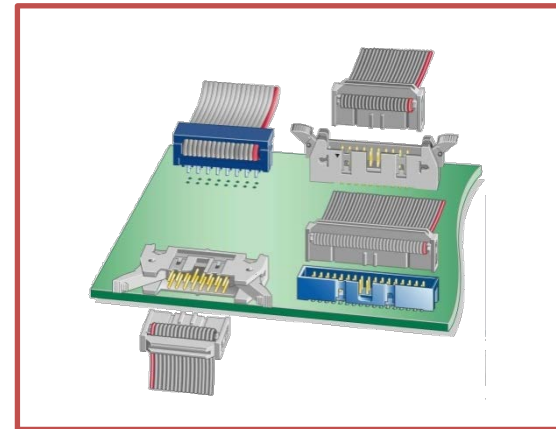
Board-to-board



Wire-to-Board



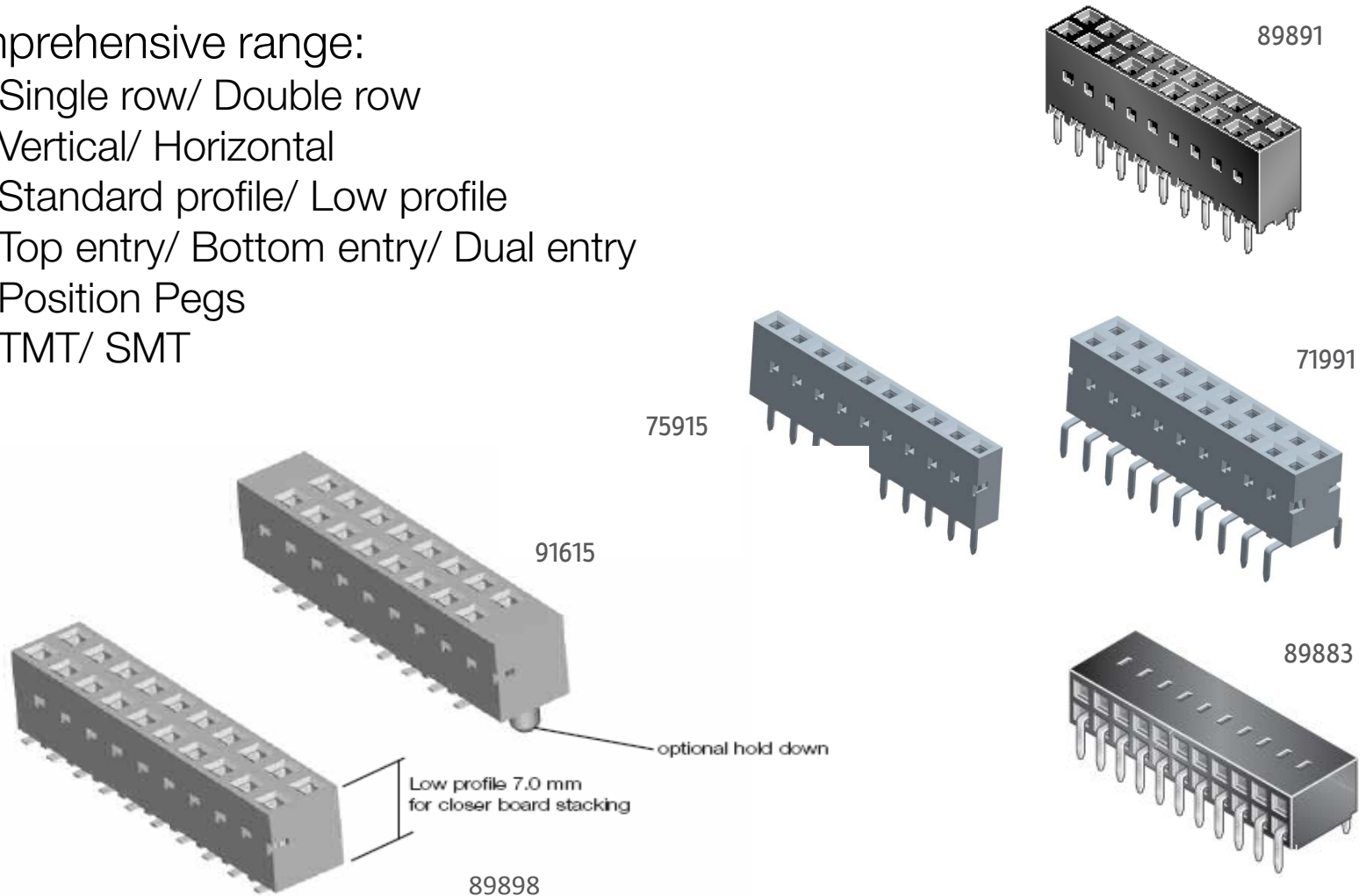
Cable-to-Board



Solution Overview – Receptacles 2.54mm centerline

A comprehensive range:

- Single row/ Double row
- Vertical/ Horizontal
- Standard profile/ Low profile
- Top entry/ Bottom entry/ Dual entry
- Position Pegs
- TMT/ SMT



Solution Overview – CTW 2.54mm centerline

- CTW Contacts:
 - Reel
 - As Loose pcs

- CTW Housings
 - Single Row
 - Double row

- Shrouded headers (2 walls)
 - Single Row
 - Double Row
 - Straight
 - Right Angle



Product Specifications – Stacking Headers

Product Facts

- Comprehensive headers variety in 0.5mm increments
- High Temperature performing plastic
- Selective Plating
- Variety of Positions:
 - 02 to 36 single row (TMT)
 - 04 to 72 double row (TMT)
 - 04 to 50 double row (SMT)

Electrical Performances

- Current Rating: 3A continuous
- Insulation Resistance: 5000 M Ω min.
- Dielectric withstanding voltage: 1500 V

Mechanical Performances

- PIN retention to housing: 9N min

Environmental

- Operating Temperature : -65~125°C

Technical Data

- Housing : High temperature black thermoplastic
- Flammability rating: UL94 V-0
- Pin: Phosphor-Bronze
- Plating: Gold or tin over 1.27 μ m (50 μ ”) nickel

Specifications

- Application Specification: Cable and Connector Specification revision 1.0

Packaging

- Tape and Reel

Features & Benefits

Features	Benefits
Dual beam contact design	High reliable electrical performances
Contact pre-stressed	Low insertion force required
Mates with very short pins (5mm) stackable end-to-end and side-by-side	Meets your specific needs and is useful for Mezzanine Application
Folating solder tails self center on the circuit pads	Easy to assures the complanarity
4 wall contact design	Signal protection
Duplex plating	Cost efficient
Locating feature available	Mantaining the allignement for soldering and facilitates robotic placement
High Temperature Performing Raw Material	Compatible with Infra-Red and Vapor-Phase reflow
According to DIN 41651 specification, HE13 and BT D2632	Qualified product



Receptacles Part Numbers – Part 1 of 2

	VCC SMT	VCC TMT	VCC TMT	HCC TMT	HCC TMT	HCC SMT
Single Row	56600					
	56605					
	91601					
	91614					
						71607
						10119678
			71920			
			95200			
			95234			
				73389		
					89882	
			75915			
		76341				
		95296				
			89885			
			77424			
		87627				
			87654			
		89893				

Receptacles Part Numbers – Part 1 of 2

	VCC SMT	VCC TMT	VCC TMT	HCC TMT	HCC TMT	HCC SMT	
Double Row	56604						
	89898						
	91615						
	91618						
	95242						
	95290						
	98493						
							71609
						89883	
			71966			10120730	
			95257				
			71991				
			71998				
			73375				
			76342				
			93696				
			95264				
			10079008				
				89891			
				87606			
				89892			
				89847			
				91625			
					89852		
		89853					

Main Markets & Applications

Industrial, Instrumentation & Medical



Communications market



Consumer market



Data market



Dubox®

Marcomm Collaterals

Available on FCI.com:

- Technical Data Sheets

- Product Specifications



BOARD/WIRE-TO-BOARD CONNECTORS



DUBOX™ VERTICAL RECEPTACLES

BOARD/WIRE-TO-BOARD CONNECTORS



DUBOX™ SHUNTS



FEATURES & BENEFITS

- Dual-beam capacity for added reliability
- Lowest contact loss profile leading to superior electrical testing
- Self-healing wire and end-to-end crimpable

NAME	BUS-12495	TYPE	PRODUCT SPECIFICATION	FCI
DESCRIPTION	DUBOX™ Printed Wire Board Connector Gold Plated			
REV	1 of 17	REV	11	
ISSUE DATE	02/20/07	ISSUE BY	15 May 07	
CLASSIFICATION	UNRESTRICTED			

1.0 GENERAL

This specification covers the gold plated contact DUBOX™ Printed Wire Board Connectors designed for parallel (vertical) interconnection of printed wiring boards in low power applications. The connectors provide only the female half of the interconnection and are designed for mating with single or double rows of 0.25 inch square pins, free-standing on 0.100 inch centers. This product is Lead Free and meets the requirements of the European Union Directive of Restrictions for Hazardous Substances (Directive 2002/95/EC). This specification is composed of the following sections:

Paragraph	Title	Page
1.0	GENERAL	1
2.0	APPLICABLE DOCUMENTS	1
3.0	REQUIREMENTS	2
3.1	Classification	2
3.2	Material	2
3.3	Finish	3
3.4	Design and Construction	3
3.5	Electrical Characteristics	3
3.6	Mechanical Characteristics	7
3.7	Environmental Conditions	8
4.0	QUALITY ASSURANCE PROVISIONS	13
4.1	Equipment Calibration	13
4.2	Inspection Conditions	13
4.3	Qualification Inspection	13
4.4	Requalification Testing	14
5.0	NOTES AND DEFINITIONS	15
5.1	Total Mating Force	15
5.2	Contact Resistance	15
5.3	Termination	15
5.4	Lubrication of Card Connectors	16

2.0 APPLICABLE DOCUMENTS

The following documents, of the issue in effect on the date of the latest revision of this specification, shall form a part of this specification to the extent specified herein.

SPECIFICATIONS

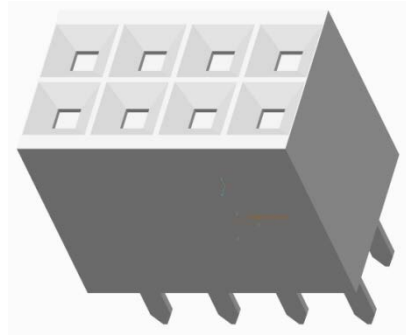
FEDERAL

- CC-N-290 Nickel Plating (Electrodeposited)
- CC-S-871 Solder: Lead Alloy, Tin-Lead Alloy, and Tin Alloy; Flux Coated Ribbon and Wire, and Solder Form
- CC-B-790 Phosphor Bronze

Marcomm Collaterals

Available on FCI.com:

- 3D Views



- Part Numbers

Features & Benefits	Product Presentation	Product Specification	Part Numbers	3D Views	Technical Documentation
---------------------	----------------------	-----------------------	--------------	----------	-------------------------

Narrow By Expand Start > Crimp to Wire System >

- Number of contacts- ▾

- Number of rows- ▾

- Orientation- ▾

- Plating (Contact area)- ▾

- Product Type- ▾

- RoHS Lead Free Comp. ▾

- Size (Wire)- ▾

[Search Again](#)

Only the first 220 best matching products out of 726 found products will be shown.
Results 1 - 20 of 220. Result page: [1](#) [2](#) [3](#) [4](#) [5](#) [6](#) [7](#) [8](#) [9](#) [10](#) >>

Part Number	Image	Status	Product Name
65043-011LF		ACTIVE	2.54 x 2.54 mm (0.1 x 0.1 in.) Centerline Crimp-to-Wire PV Receptacle Housing, Double Row
65043-012LF		ACTIVE	2.54 x 2.54 mm (0.1 x 0.1 in.) Centerline Crimp-to-Wire PV Receptacle Housing, Double Row
65043-022LF		ACTIVE	2.54 x 2.54 mm (0.1 x 0.1 in.) Centerline Crimp-to-Wire PV Receptacle Housing, Double Row
65043-023LF		ACTIVE	2.54 x 2.54 mm (0.1 x 0.1 in.) Centerline Crimp-to-Wire PV Receptacle Housing, Double Row
65043-024LF		ACTIVE	2.54 x 2.54 mm (0.1 x 0.1 in.) Centerline Crimp-to-Wire PV Receptacle Housing, Double Row
65238-012LF		ACTIVE	Crimp-to-Wire Housing, Double Row
65238-019LF		ACTIVE	Crimp-to-Wire Housing, Double Row



THANK YOU

