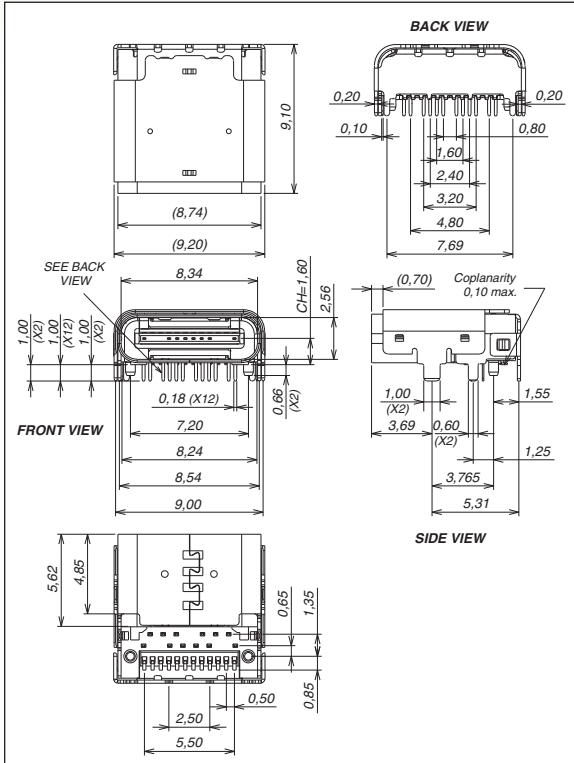
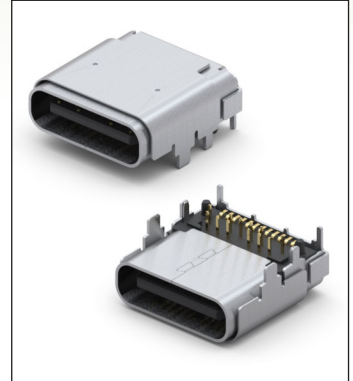


## SERIES 898 • UNIVERSAL SERIAL BUS 3.1 TYPE C • TOP MOUNT RECEPTACLE



- USB 3.1 Top Mount, Hybrid Layout
- Full metal housing with enhanced EMI/RFI prevention
- Reversible USB Type C Connector
- 10Gbps Data rate
- 2X faster than USB 3.0 with more efficient data transfer, higher through-put & improved I/O power efficiency
- For Storage, Smartphone, Tablet, Notebook, Docking, Automotive & Home Entertainment



### ORDERING INFORMATION

<b>FIG. 1</b>	<b>Top Mount Type C Receptacle, Hybrid Layout</b>
	898-73-024-90-310001
<b>(Tape &amp; Reel Packaged, 550 parts per 330mm reel)</b>	

### Technical Specifications

#### Materials:

Terminals: Copper Alloy, Tin-Plated  
 Contacts: Copper Alloy, 0,76µm Gold-Plated  
 Casing and Shield: Stainless Steel  
 Insulator material: High temperature thermoplastic rated UL94V-0



#### General Specifications:

Temperature Range:  
 Storage: -20°C to +60°C  
 Operating: -40°C to +80°C  
 Nominal: +20°C

#### Electrical:

Voltage: 50VAC (rms)  
 LLCR: 40mΩ (initial), Δ10mΩ (after)  
 Dielectric Strength: 100VAC  
 Insulation resistance: 100MΩ min.  
 Current Rating: VBUS and GND contacts rated @ 1.25A each, paralleled for a total of 5A

#### Mechanical:

Durability: 10,000 cycles  
 Insertion force: 20 Newtons max.  
 Extraction force: 8 Newtons min., 20 Newtons max.

**FIG. 1**