

LP-GTV-S Series

- DC Pass Multi-Strike Design
- Broadband Bidirectional Design
- Excellent IL/RL Performance Over the Entire Operating Frequency Band
- Fully Weatherized Housing
- White Bronze Plated for Durability and Long Life



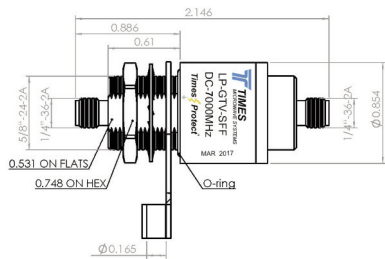
Lightning and Surge Protection for The 21st Century™

The **Times-Protect®** LP-GTV-S series is an exceptional broadband DC pass design for lightning protection applications requiring DC power to be supplied to the electronics. These devices exhibit outstanding RF performance with high surge current handling characteristics and cover a broad range of applications requiring up to 150W of RF power handling. Its fully weatherized housing meeting IP67 standard allows for outdoor as well as indoor installation. The SMA connector designs cover the entire frequency spectrum from DC through 7000MHz.

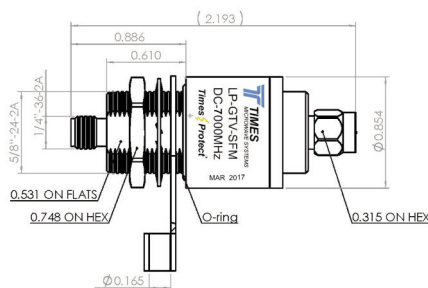
LP-GTV-S Series:

- LP-GTV-SFF (150W)
SMA Female connectors on both sides - bidirectional
- LP-GTV-SFM (150W)
SMA Male connector on one side & SMA Female connector on the other side - bidirectional

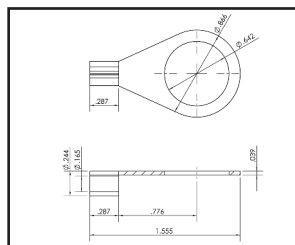




- LP-GTV-SFF
DC Pass SMA Type F/F



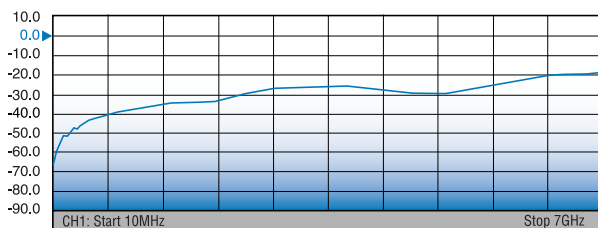
- LP-GTV-SFM
DC Pass SMA Type F/M



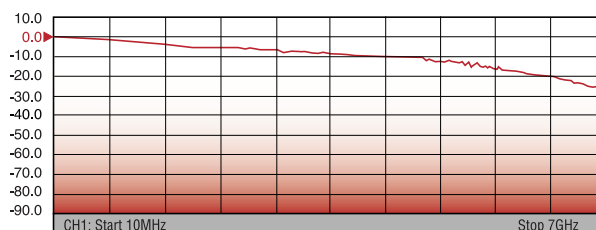
- Grounding Ring

*All Dimensions shown in inches

S11 **TYPICAL RETURN LOSS**



S21 **TYPICAL INSERTION LOSS**



| Electrical Specifications | | |
|---|--|--------------|
| Impedance | 50 Ω | |
| Frequency Range | DC-7000 MHz | |
| VSWR/Return Loss | < 1.2:1 / <-20dB (DC-6700MHz) < 1.3:1 / <-17dB (6700-7000MHz) | |
| Insertion Loss | < 0.2dB (DC-6700MHz) < 0.3dB (6700-7000Mhz) | |
| Maximum Surge Current | 10kA multiple (8x20μs wave-form) | |
| Impulse Sparkover | 700V (1kV/μs) | |
| Turn on | 180Vdc | |
| Average Power | 150 Watts | |
| Protection Circuit | DC Pass | |
| Mechanical / Environmental Specifications | | |
| Temp Range Storage/Operating | -40°C - +85°C | |
| Weatherization | IEC 60068 40/085/21 & IP67 | |
| Thermal Shock | US MIL-STD 202, Meth.107,Cond.B | |
| Vibration | US MIL-STD 202, Meth.204,Cond.B | |
| Shock | US MIL-STD 202, Meth.213,Cond.I | |
| RoHS Compliant | Yes | |
| Wear/Mating Cycles | 500 minimum | |
| Recommended Coupling Nut Torque | 3 to 5 lb-in | |
| Unit Weight | 1.41 oz / 40 grams | |
| Material Specifications | | |
| Component | Material | Plating |
| Body | Aluminum | White Bronze |
| Inner Conductor Male | Brass | Silver |
| Inner Conductor | Phosphor Bronze | Silver |
| Washer | Brass | White Bronze |
| Coupling Nut | Brass | White Bronze |
| Insulator | PTFE | -- |
| O-Ring | Silicone Rubber | -- |



World Headquarters: 358 Hall Avenue, Wallingford, CT 06492 • Tel: 203-949-8400, 1-800-867-2629 • Fax: 203-949-8423

International Sales: +1 (203) 949-8503 • +1 (203) 213-3506

China Sales: No. 318 Yuan Shan Road, Shanghai 201108 China • Tel: 86-21-51761234 • Fax: 86-21-64424098

www.timesmicrowave.com

LP-GTVS 04/17