

## EPIC® MH series

Modular system for power, signal & data



The EPIC® MH series is a modular connector system capable of transmitting power, signal and data in a single connector. The series is designed to be assembled with ease and is compatible with other standard modular systems in the market.

### Technical data

#### Number of contacts:

- power:	2, 3, 4, 6
- signal:	8, 12, 17, 20
- data:	2x2, 36-pole

#### Temperature range:

see product page

#### Pollution level:

3

#### Mating cycles:

- per DIN EN 61984:2008  
Service Life Test: Tested to 500 cycles and passed

#### Test voltage:

0.8 kV - 8 kV, depending on module

#### Rated voltage:

50 - 1000V

#### Rated current:

10 - 100A

#### Wire size:

26 - 8 AWG (0.14 - 10 mm<sup>2</sup>)

#### Contact material:

silver-plated copper alloy

#### Contact resistance:

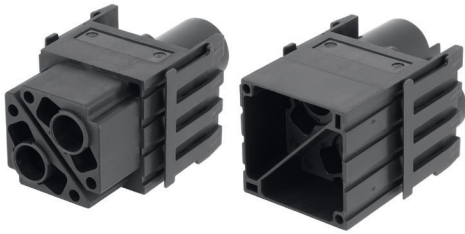
< 5 mΩ

#### Approvals:

UL File Number: E75770  
(where applicable)

# EPIC® MH 2

2-position module for power transmission



mount in high profile housings only  
contacts sold separately, see below

### Technical data

Temperature range:	-40°C to +125°C
Rated voltage:	1000V
Rated current:	100A
Wire size:	8 - 1 AWG (10 - 35 mm²)

Termination	# of slots in frame	Plug	Receptacle	Contact size
crimp termination	2	44423212	44423213	8 mm

### Complete the installation



MH frames  
page 349

### Approvals



## 8 mm contacts

Machined contacts for EPIC® MH series modules



Contact size		Stripping length mm	Bag of 10 silver contacts		Pack size
mm²	AWG		pin	socket	
10	8	18	44423242	44423246	10
16	6	18	44423243	44423247	10
25	4	18	44423244	44423248	10
35	2	18	44423245	44423249	10

### Contact tools

	Crimp dies:	
	10 mm²:	44423270
	16 mm²:	44423271
	25 mm²:	44423272
	35 mm²:	44423273



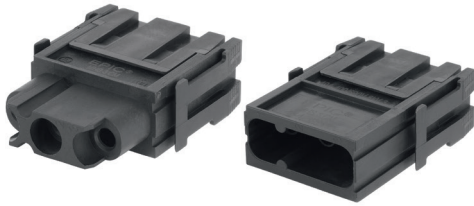
Removal tool:  
44423269

Use with hydraulic crimp tool

If not otherwise specified, all values relating to the product are nominal values. Photographs are not to scale and are not true representations of the products in question.

## EPIC® MH 3

### 3-position module for power transmission



mount in high profile housings only  
contacts sold separately, see below

Termination	# of slots in frame	Plug	Receptacle	Contact size
crimp termination	1	44423214	44423215	4 mm

#### Technical data

<b>Temperature range:</b>	-40°C to +125°C
<b>Rated voltage:</b>	
- conductor/ground:	400V
- conductor/conductor:	690V
<b>Rated current:</b>	40A
<b>Wire size:</b>	16 - 8 AWG (1.5 - 10 mm <sup>2</sup> )

#### Complete the installation



#### Approvals



## EPIC® MH 4

### 4-position module for power transmission



mount in high profile housings only  
contacts sold separately, see below

Termination	# of slots in frame	Plug	Receptacle	Contact size
crimp termination	1	44423216	44423217	4 mm

#### Technical data

<b>Temperature range:</b>	-40°C to +125°C
<b>Rated voltage:</b>	830V
<b>Rated current:</b>	40A
<b>Wire size:</b>	16 - 8 AWG (1.5 - 10 mm <sup>2</sup> )

#### Complete the installation



#### Approvals



## 4 mm contacts

### Machined contacts for EPIC® MH series modules



Contact size	Stripping length	mm	Bag of 10 silver contacts		Pack size
			mm <sup>2</sup>	AWG	
1.5	16	10	44423250	44423255	10
2.5	14	10	44423251	44423256	10
4	12	10	44423252	44423257*	10
6	10	10	44423253	44423258	10
10	8	10	44423254	44423259	10

\* contact 44423257 requires crimp die 11174101

#### Complete the installation



Crimp tool:  
11147000



Crimp dies:  
16 - 12 AWG: 11147100  
10 - 8 AWG: 11147101



Locator:  
11147201

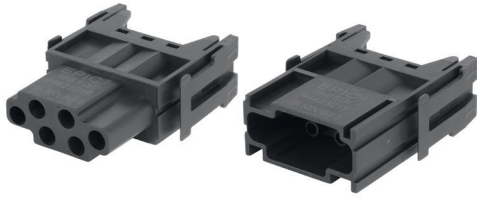


Removal tool:  
44423268

If not otherwise specified, all values relating to the product are nominal values.  
Photographs are not to scale and are not true representations of the products in question.

## EPIC® MH 6

6-position module for signal transmission



mount in high profile housings only  
contacts sold separately, see below

Termination	# of slots in frame	Plug	Receptacle	Contact size
crimp termination	1	44423218	44423219	2.5 mm

### Technical data

Temperature range:	-40°C to +125°C
Rated voltage:	500V
Rated current:	16A
Wire size:	26 - 12 AWG (0.14 - 4 mm <sup>2</sup> )

### Complete the installation



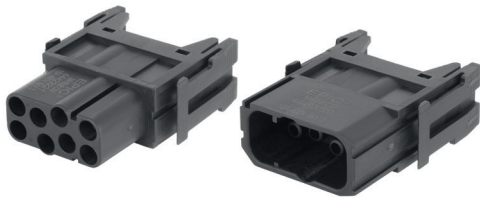
MH frames  
page 349

### Approvals



## EPIC® MH 8

8-position module for signal transmission



mount in high profile housings only  
contacts sold separately, see below

Termination	# of slots in frame	Plug	Receptacle	Contact size
crimp termination	1	44423220	44423221	2.5 mm

### Technical data

Temperature range:	-40°C to +125°C
Rated voltage:	400V
Rated current:	16A
Wire size:	26 - 12 AWG (0.14 - 4 mm <sup>2</sup> )

### Complete the installation



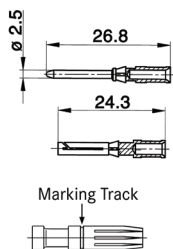
MH frames  
page 349

### Approvals



## 2.5 mm contacts

Machined contacts for EPIC® MH series modules



### Complete the installation



Crimp tool:  
11147000



Crimp dies:  
11147100



Locator:  
11147200

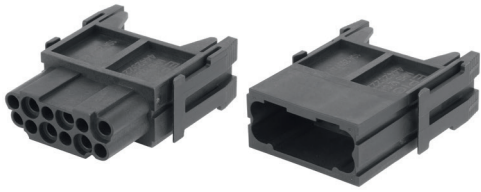
for removal of contacts, use a slotted screwdriver; no special tool is necessary

Contact size		Stripping length (mm)		# of marking tracks	Bag of 100 silver contacts		Bag of 100 gold contacts	
mm <sup>2</sup>	AWG	pin	socket		pin	socket	pin	socket
0.5	20	7.4	7.3	—	11190000	11195000	11192000	11197000
0.75-1.0	18	7.4	7.3	1	11190100	11195100	11192100	11197100
1.5	16	7.4	7.3	2	11190200	11195200	11192200	11197200
2.5	14	7.4	7.3	3	11190300	11195300	—	—
4.0	12	7.4	7.3	—	11190400	11195400	—	—

If not otherwise specified, all values relating to the product are nominal values. Photographs are not to scale and are not true representations of the products in question.

## EPIC® MH 12

12-position module for signal transmission



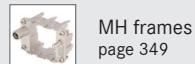
mount in high profile housings only  
contacts sold separately, see below

Termination	# of slots in frame	Plug	Receptacle	Contact size
crimp termination	1	44423222	44423223	1.6 mm

### Technical data

Temperature range:	-40°C to +125°C
Rated voltage:	250V
Rated current:	10A
Wire size:	26 - 14 AWG (0.14 - 2.5 mm <sup>2</sup> )

### Complete the installation



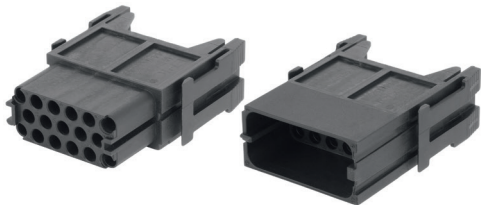
MH frames  
page 349

### Approvals



## EPIC® MH 17

17-position module for signal transmission



mount in high profile housings only  
contacts sold separately, see below

Termination	# of slots in frame	Plug	Receptacle	Contact size
crimp termination	1	44423224	44423225	1.6 mm

### Technical data

Temperature range:	-40°C to +125°C
Rated voltage:	160V
Rated current:	10A
Wire size:	26 - 14 AWG (0.14 - 2.5 mm <sup>2</sup> )

### Complete the installation



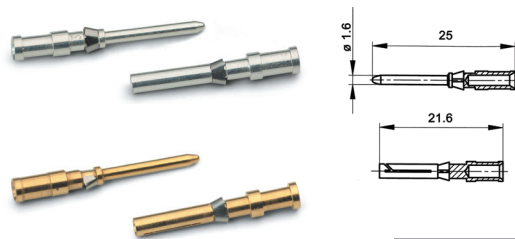
MH frames  
page 349

### Approvals



## 1.6 mm contacts

### Machined contacts for EPIC® MH series modules



Contact size		Stripping length mm	# of marking tracks	Bag of 100 silver contacts		Bag of 100 gold contacts	
mm <sup>2</sup>	AWG			pin	socket	pin	socket
0.14 - 0.37	26 - 22	8	1	13162000	13163000	13162500	13163500
0.5	20	8	2	13162100	13163100	13162600	13163600
0.75 - 1.0	18	8	3	13162200	13163200	13162700	13163700
1.5	16	8	4	13162300	13163300	13162800	13163800
2.5	14	5.8	5	13162400	13163400	13162900	13163900

### Complete the installation



Crimp tool:  
11147000



Crimp dies:  
11147100



Locator:  
11147200

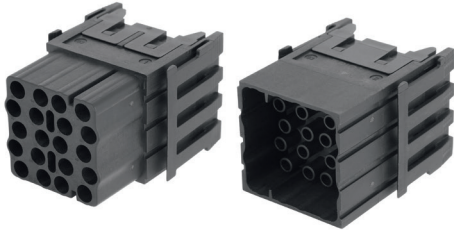


Removal tool:  
11161000

If not otherwise specified, all values relating to the product are nominal values.  
Photographs are not to scale and are not true representations of the products in question.

# EPIC® MH 20

## 20-position module for signal transmission




mount in high profile housings only  
contacts sold separately, see below

Technical data	
Temperature range:	-40°C to +125°C
Rated voltage:	500V
Rated current:	16A
Wire size:	26 - 12 AWG (0.14 - 4 mm <sup>2</sup> )

Termination	# of slots in frame	Plug	Receptacle	Contact size
crimp termination	2	44423226	44423227	2.5 mm

**Complete the installation**



MH frames  
page 349

**Approvals**



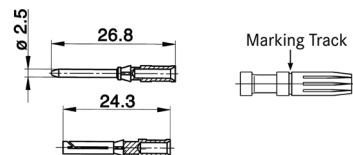
## 2.5 mm contacts

### Machined contacts for EPIC® MH series modules



Contact size		Stripping length (mm)		# of marking tracks	Bag of 100 silver contacts		Bag of 100 gold contacts	
mm <sup>2</sup>	AWG	pin	socket		pin	socket	pin	socket
0.5	20	7.4	7.3	—	11190000	11195000	11192000	11197000
0.75 - 1.0	18	7.4	7.3	1	11190100	11195100	11192100	11197100
1.5	16	7.4	7.3	2	11190200	11195200	11192200	11197200
2.5	14	7.4	7.3	3	11190300	11195300	—	—
4.0	12	7.4	7.3	—	11190400	11195400	—	—

contacts sold in bags of 100



**Complete the installation**



Crimp tool:  
11147000



Crimp dies:  
11147100



Locator:  
11147200

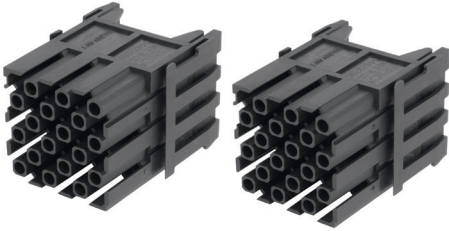


Removal tool:  
11182500

If not otherwise specified, all values relating to the product are nominal values. Photographs are not to scale and are not true representations of the products in question.

## EPIC® MH 36

36-position module for signal transmission




mount in high profile housings only  
contacts sold separately, see below

Technical data	
Temperature range:	-40°C to +125°C
Rated voltage:	250V
Rated current:	10A
Wire size:	26 - 14 AWG (0.14 - 2.5 mm <sup>2</sup> )

Termination	# of slots in frame	Plug	Receptacle	Contact size
crimp termination	2	44423266	44423267	1.6 mm


Both plug and receptacle modules accept male and female contacts

Complete the installation



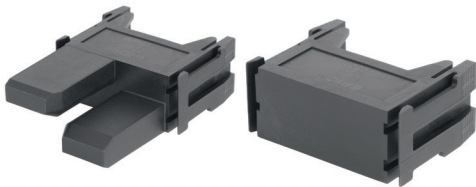
MH frames  
page 349

Approvals



## EPIC® MH 0

Dummy module




mount in high profile housings only  
contacts sold separately, see below

The EPIC® MH 0 dummy module is a placeholder for future expansion. All open slots in the frame must be closed with a dummy module if they are not in use.


Description	# of slots in frame	Part Number	Pack size
blind module	1	44423232	10
blind module with centering plug	1	44423233	10

Complete the installation



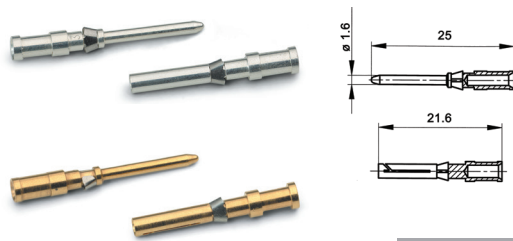
MH frames  
page 349

Approvals



## 1.6 mm contacts

Machined contacts for EPIC® MH series modules



contacts sold in bags of 100

Contact size mm <sup>2</sup>	AWG	Stripping length mm	# of marking tracks	Bag of 100 silver contacts		Bag of 100 gold contacts	
				pin	socket	pin	socket
0.14 - 0.37	26 - 22	8	1	13162000	13163000	13162500	13163500
0.5	20	8	2	13162100	13163100	13162600	13163600
0.75 - 1.0	18	8	3	13162200	13163200	13162700	13163700
1.5	16	8	4	13162300	13163300	13162800	13163800
2.5	14	8	5	13162400	13163400	13162900	13163900

Complete the installation



Crimp tool:  
11147000



Crimp dies:  
11147100



Locator:  
11147200



Removal tool:  
11161000

If not otherwise specified, all values relating to the product are nominal values. Photographs are not to scale and are not true representations of the products in question.

# EPIC® MH BUS/MH Coax

2x4-position shielded module for data & signal transmission



EPIC® MH BUS module

EPIC® MH Bus PIN contact holder


EPIC® MH Coax contact holder




### Technical data

<b>Rated voltage:</b>	50V
<b>Rated current:</b>	
- EPIC® MH Bus PIN:	10A
- EPIC® MH Coax:	16A

### Complete the installation

 MH frames  
page 349

 MH  
Potential set:  
44423265

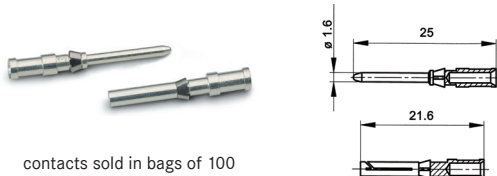
mount in high profile housings only  
contacts sold separately, see below

### Approvals



Description	Number of contacts	# of slots in frame	Plug	Receptacle	Contact size
BUS module	—	2	44423228	44423230	—
Bus PIN contact holder	4 + shield	—	44423229	44423231	1.6 mm
Coax contact holder	1	—	44423260	44423261	1.6 mm
	1	—	44423262	44423263	2.5 mm

## 1.6 mm / 2.5 mm contacts



contacts sold in bags of 100

### 1.6 mm machined contacts

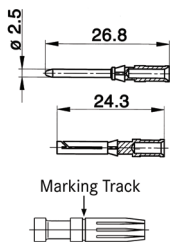
Contact size mm <sup>2</sup>	AWG	Stripping length mm	# of marking tracks	Bag of 100 silver contacts		Bag of 100 gold contacts	
				pin	socket	pin	socket
0.14-0.37	26-22	8	1	13162000	13163000	13162500	13163500
0.5	20	8	2	13162100	13163100	13162600	13163600
0.75-1.0	18	8	3	13162200	13163200	13162700	13163700
1.5	16	8	4	13162300	13163300	13162800	13163800
2.5	14	5.8	5	13162400	13163400	13162900	13163900



contacts sold in bags of 100

### 2.5 mm machined contacts

Contact size mm <sup>2</sup>	AWG	Stripping length (mm)		# of marking tracks	Bag of 100 silver contacts		Bag of 100 gold contacts	
		pin	socket		pin	socket	pin	socket
0.5	20	7.4	7.3	—	11190000	11195000	11192000	11197000
0.75-1.0	18	7.4	7.3	1	11190100	11195100	11192100	11197100
1.5	16	7.4	7.3	2	11190200	11195200	11192200	11197200
2.5	14	7.4	7.3	3	11190300	11195300	—	—
4.0	12	7.4	7.3	—	11190400	11195400	—	—



### Complete the installation

 Crimp tool:  
11147000

 Crimp dies:  
11147100

 Locator:  
11147200

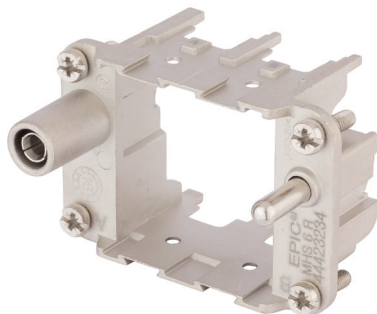
 Removal tool:  
1.6 mm: 11161000  
2.5 mm: 11182500

If not otherwise specified, all values relating to the product are nominal values.  
Photographs are not to scale and are not true representations of the products in question.



## EPIC® MH 6 multi frame

### Modular frame with 2 slots



#### Technical data

Temperature range:	-40°C to +125°C
Material:	die-cast zinc

#### Complete the installation



MH clip:  
44423264

#### Compatible housing

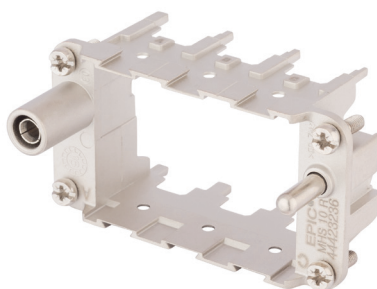


HB 6  
page 379

Part number	Description	Number of slots	Slot marking
44423234	plug	2	A, B
44423235	receptacle	2	a, b

## EPIC® MH 10 multi frame

### Modular frame with 3 slots



#### Technical data

Temperature range:	-40°C to +125°C
Material:	die-cast zinc

#### Complete the installation



MH clip:  
44423264

#### Compatible housing

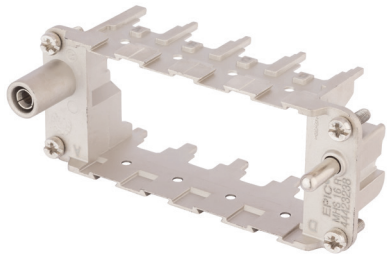


HB 10  
page 382

Part number	Description	Number of slots	Slot marking
44423236	plug	3	A, B, C
44423237	receptacle	3	a, b, c


If not otherwise specified, all values relating to the product are nominal values.  
Photographs are not to scale and are not true representations of the products in question.

**EPIC® MH 16 multi frame**  
Modular frame with 4 slots




Technical data	
Temperature range:	-40°C to +125°C
Material:	die-cast zinc

**Complete the installation**



MH clip:  
44423264

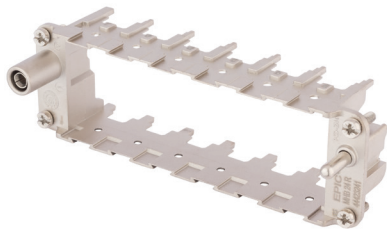
**Compatible housing**



HB 16  
page 388


Part number	Description	Number of slots	Slot marking
44423238	plug	4	A, B, C, D
44423239	receptacle	4	a, b, c, d

**EPIC® MH 24 multi frame**  
Modular frame with 6 slots




Technical data	
Temperature range:	-40°C to +125°C
Material:	die-cast zinc

**Complete the installation**



MH clip:  
44423264

**Compatible housing**



HB 24  
page 394

Part number	Description	Number of slots	Slot marking
44423240	plug	6	A, B, C, D, E, F
44423241	receptacle	6	a, b, c, d, e, f

If not otherwise specified, all values relating to the product are nominal values. Photographs are not to scale and are not true representations of the products in question.