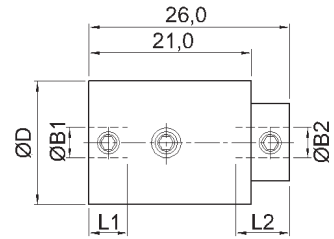


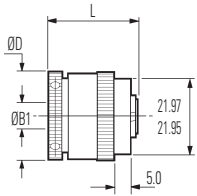
Adjustable Friction Clutches



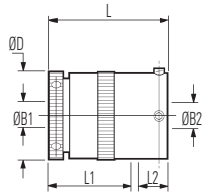
Size 16 Set Screw Shaft Fixing



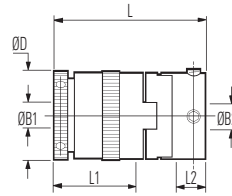
Size 25 Set Screw Shaft Fixing



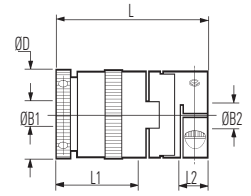
Ref. 271 (2 plate)
279 (6 plate)
Basic clutch (thro' bore)



Ref. 273 (2 plate)
281 (6 plate)
Basic clutch + sleeve adaptor

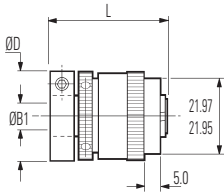


Ref. 277 (2 plate)
285 (6 plate)
Basic clutch + Oldham (set screw) coupling

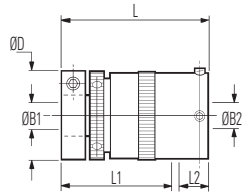


Ref. 267 (2 plate)
269 (6 plate)
Basic clutch + Oldham (clamp) coupling

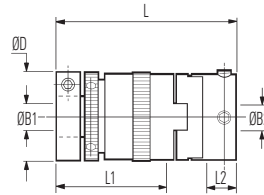
Size 25 Clamp Shaft Fixing



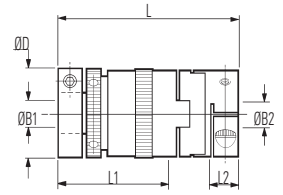
Ref. 401 (2 plate)
409 (6 plate)
Basic clutch (thro' bore)



Ref. 403 (2 plate)
411 (6 plate)
Basic clutch + sleeve adaptor

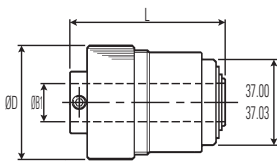


Ref. 407 (2 plate)
415 (6 plate)
Basic clutch + Oldham (set screw) coupling

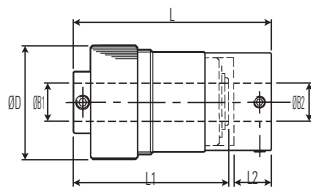


Ref. 397 (2 plate)
399 (6 plate)
Basic clutch + Oldham (clamp) coupling

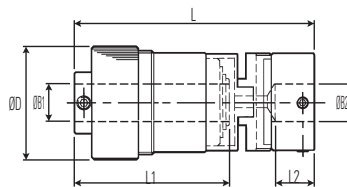
Size 48 Set Screw Shaft Fixing



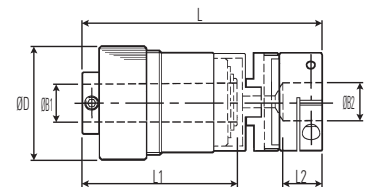
Ref. 279
Basic Clutch (thro' bore)



Ref. 281
Basic Clutch + sleeve adaptor



Ref. 285
Basic Clutch + Oldham (set screw) coupling



Ref. 269
Basic Clutch + Oldham (clamp) coupling

Materials & Finishes

Housing, adjuster ring, adaptors:	Al. Alloy 2014 T6 Irridite NCP finish
Hub:	Steel, heat treated
Clutch plates:	Size 25 Steel, heat treated Size 48 Brass
Bearings:	Sintered bronze
Fasteners:	Alloy steel, black oiled