



CONNECTION ELEMENT WITH COVER FOR MOUNTING ON PIPES, FLOOR AND BRACKETS



General technical details:		
product brand name		SIRIUS
product designation		accessories for signaling columns, connection element
Type of voltage		AC/DC
<ul style="list-style-type: none"> • of the operating voltage 		
Operating frequency		
<ul style="list-style-type: none"> • 1 / rated value 	Hz	50
<ul style="list-style-type: none"> • 2 / rated value 	Hz	60
Operating voltage		
<ul style="list-style-type: none"> • for DC / rated value 	V	230 ... 24
<ul style="list-style-type: none"> • at 50 Hz / at AC / rated value 	V	24 ... 230
<ul style="list-style-type: none"> • at 60 Hz / at AC / rated value 	V	24 ... 230
Item designation		
<ul style="list-style-type: none"> • according to DIN 40719 extendable after IEC 204-2 / according to IEC 750 		E
<ul style="list-style-type: none"> • according to DIN EN 61346-2 		X

Mechanical design:		
Design of the electrical connection		screw-type terminals
Type of mounting		

• pipe mounting		Yes
• angle mounting		Yes
• floor mounting		Yes
Color / of the housing		black
External diameter / of the signal column element	mm	50

Ambient conditions:

Ambient temperature		
• during operating	°C	-20 ... +50
Protection class IP		IP54
Depth	mm	53
Height	mm	41.5
Width	mm	53

Certificates/approvals:

General Product Approval	EMC	Declaration of Conformity	Shipping Approval
 GOST	 UL	 C-TICK	 EG-Konf.
			 DNV

Further information:

Information- and Downloadcenter (Catalogs, Brochures,...)

<http://www.siemens.com/industrial-controls/catalogs>

Industry Mall (Online ordering system)

<http://www.siemens.com/industrial-controls/mall>

Cax online generator:

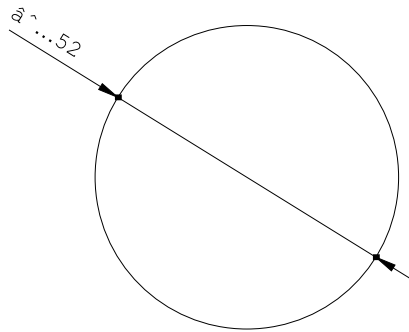
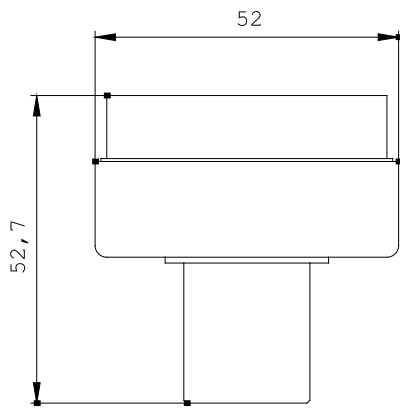
<http://www.siemens.com/cax>

Service&Support (Manuals, Certificates, Characteristics, FAQs,...)

<http://support.automation.siemens.com/WW/view/en/8WD4208-0AA/all>

Image database (product images, 2D dimension drawings, 3D models, device circuit diagrams, ...)

http://www.automation.siemens.com/bilddb/cax_en.aspx?mlfb=8WD4208-0AA



\pi
\pi

last change:

Mar 4, 2013