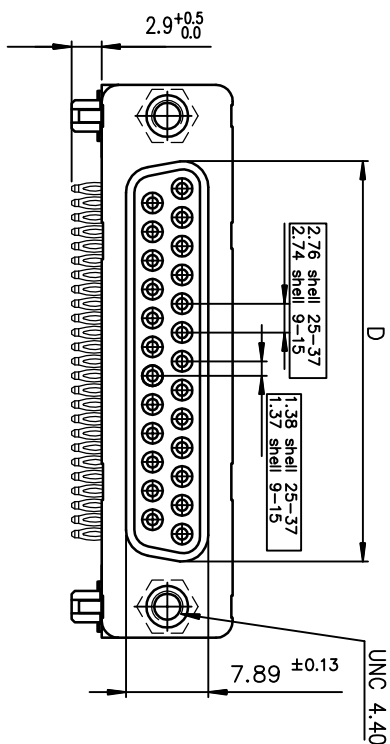
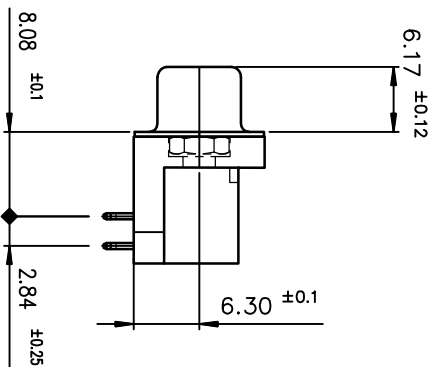
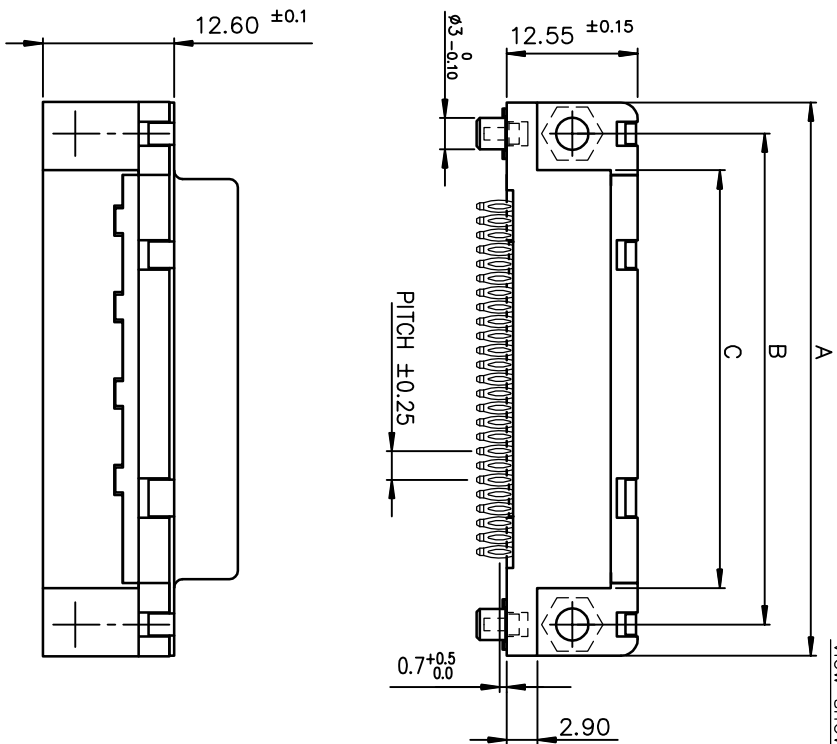
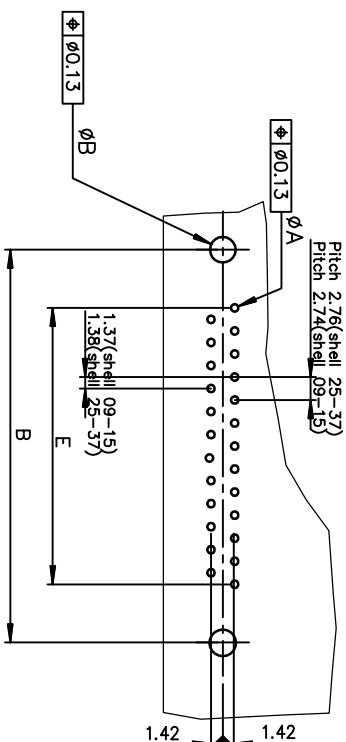


|       | At.0.38 | Bt.0.12 | Ch.0.10 | Dt.0.25 | Eu.0.07 | TiN LEAD<br>PART NUMBER | TiN LEAD<br>PART NUMBER | LEAD FREE<br>PART NUMBER | LEAD FREE<br>PART NUMBER |
|-------|---------|---------|---------|---------|---------|-------------------------|-------------------------|--------------------------|--------------------------|
| SHELL |         |         |         |         |         | D09S80C46X00I           | D09S80C66X00I           | D09S80C46X00I.F          | D09S80C66X00I.F          |
| 09    | 30.81   | 24.99   | 18.00   | 16.21   | 10.96   | D15S80C46X00I           | D15S80C66X00I           | D15S80C46X00I.F          | D15S80C66X00I.F          |
| 15    | 39.14   | 33.32   | 26.32   | 24.54   | 19.18   | D25S80C46X00I           | D25S80C66X00I           | D25S80C46X00I.F          | D25S80C66X00I.F          |
| 25    | 53.03   | 47.04   | 40.04   | 38.25   | 33.12   | D35S80C46X00I           | D35S80C66X00I           | D35S80C46X00I.F          | D35S80C66X00I.F          |
| 37    | 69.32   | 63.50   | 56.50   | 54.71   | 49.68   | D73S80C46X00I           | D73S80C66X00I           | D73S80C46X00I.F          | D73S80C66X00I.F          |
|       |         |         |         |         |         | Gold flash              | 0.76 » gold             | Gold flash               | 0.76 » gold              |



view shown without plastic pin and grounding

PC card drilling dimensions(after plating)  
(thickness 1.60 ±0.25 mm)

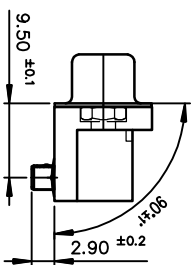




## GENERAL CHARACTERISTICS AND ROHS INFORMATIONS.

SEE DRAWING C01-8646-0001



### Detail of grounding strip



|                                       |            |          |                               |                    |                  |   |   |                |                          |
|---------------------------------------|------------|----------|-------------------------------|--------------------|------------------|---|---|----------------|--------------------------|
| mat'l. code                           |            | surface  |                               | tolerance          |                  | projection  |   | product family |                          |
| -                                     |            | ISO 1302 |                               | ✓ ISO 406 ISO 1101 |                  |  |   | D-SUB          |                          |
| tolerances unless otherwise specified |            |          |                               |                    |                  |   |   |                |                          |
| ltr ecn no                            | dr         | date     | angles                        |                    | .0±.0.1          |   | MM  |                | title                    |
| H                                     | EX-1-17859 | MP       | 2014/06/06                    | linear             | .00±0.1          |   | ↔   |                | FEMALE CONNECTOR DELTA D |
|                                       |            |          |                               | 0±.2°              | .000±0.1         |   | scale 2:1   |                | RIGHT ANGLED PRESS FIT   |
|                                       |            |          |                               | dr                 | PESSON           | 1995/03/10  |  |                | dwg no                   |
|                                       |            |          |                               |                    | engr MITHUN PAUL | 2014/06/06  |   |                | sheet 1 of 1             |
|                                       |            |          |                               |                    | chr ALIAS BABU   | 2014/06/06  |   |                | C01-8646-0174            |
|                                       |            |          |                               |                    | dppd BLU K PAUL  | 2014/06/06  |   |                | A3                       |
| revision                              |            | H        | type Product Customer Drawing |                    |                  |   |   |                |                          |
| sheet                                 | revision   | H        |                               |                    |                  |   |   |                |                          |
| index                                 | sheet      | 1        |                               |                    |                  |   |   |                |                          |

# Mouser Electronics

Authorized Distributor

Click to View Pricing, Inventory, Delivery & Lifecycle Information:

[FCI / Amphenol:](#)

[D09S80C6GX00LF](#) [D15S80C6GX00LF](#) [D25S80C6GX00LF](#) [D37S80C6GX00LF](#) [D09S80C6GX00](#) [D15S80C6GX00](#)  
[D25S80C6GX00](#) [D37S80C6GX00](#) [D37S80C4GX00LF](#) [D15S80C4GX00LF](#)