

PRODUCT DESCRIPTION CODE :

10131933-YXXXLF

PLATING :   
 ————— R<sub>o</sub>HS COMPATIBLE, SEE NOTE 3   
 ————— PACKAGING : "A" TAPE & REEL   
 "U" TUBE   
 ————— TOTAL NUMBER OF POSITIONS 04 TO 50

- 1 = 0.76 μm GOLD ON CONTACT AREA  
2.54 μm MIN MATTE TIN ON TAIL
- 2 = 0.38 μm GOLD ON CONTACT AREA  
2.54 μm MIN MATTE TIN ON TAIL
- 3 = 0.20 μm GOLD ON CONTACT AREA  
2.54 μm MIN MATTE TIN ON TAIL
- 4 = 0.76 μm GXT ON CONTACT AREA  
2.54 μm MIN MATTE TIN ON TAIL
- 5 = 0.38 μm GXT ON CONTACT AREA  
2.54 μm MIN MATTE TIN ON TAIL
- 6 = 0.20 μm GXT ON CONTACT AREA  
2.54 μm MIN MATTE TIN ON TAIL
- 9 = 2.54 μm MIN MATTE TIN FULL PLATED
- 1.27 μm NICKEL MIN UNDERLAYER

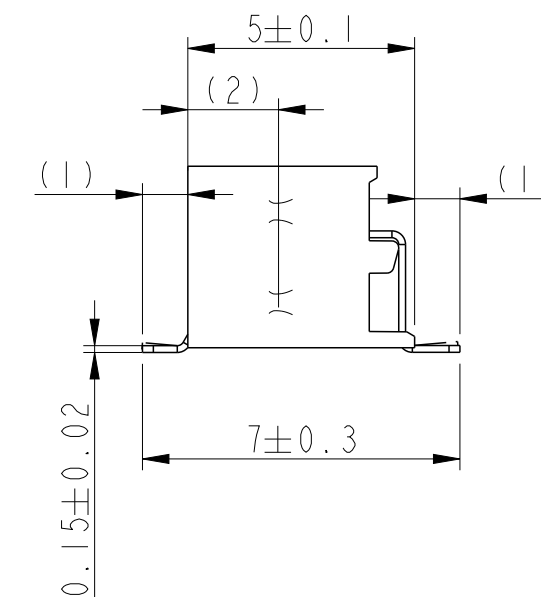
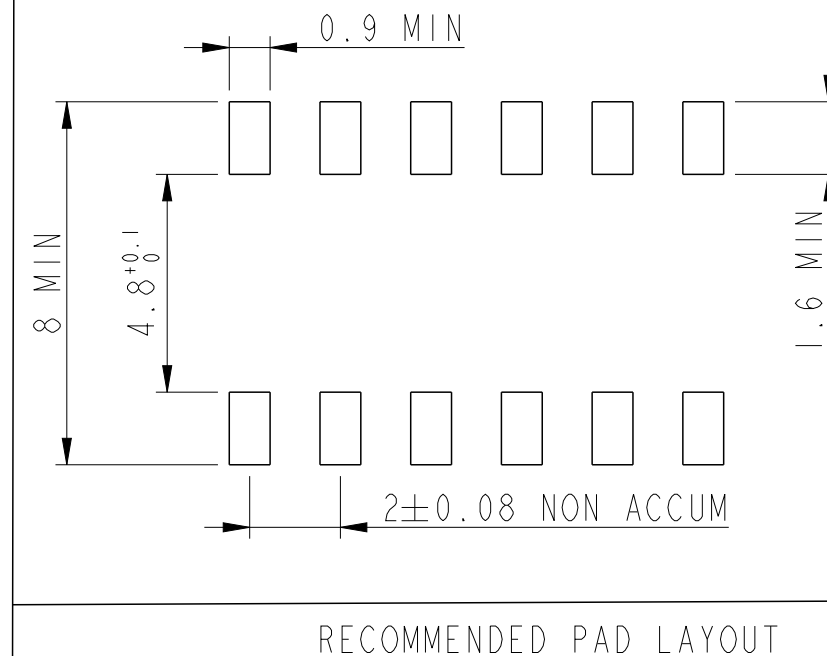
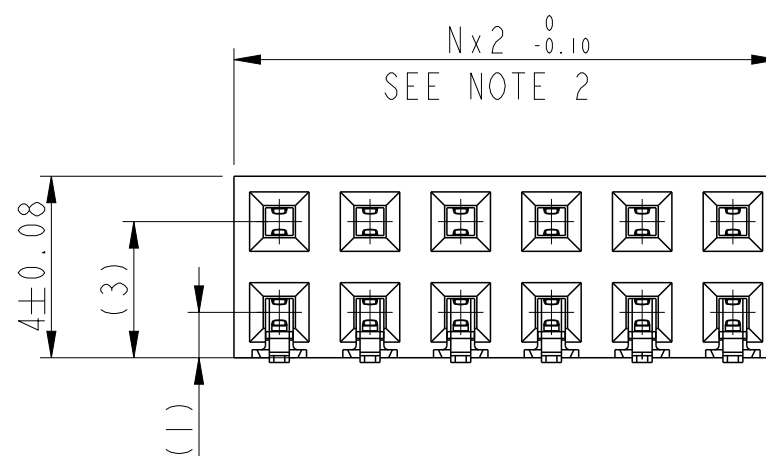
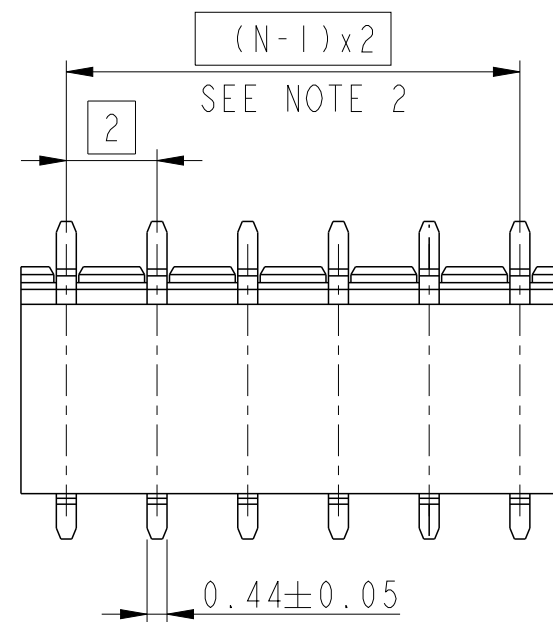
NOTES :

1 - MATERIAL   
 HOUSING : HIGH TEMPERATURE GLASS FILLED FLAME   
 RETARDANT PER UL 94 V-0   
 TERMINAL: COPPER ALLOY

2- TO DETERMINE DIMENSIONS :   
 N = NUMBER OF POSITIONS PER ROW   
 EXAMPLE : 8 POS N x 2 = 16mm   
 UP TO N = 24 TOLERANCE : 0   
 -0.10   
 FROM N = 26 TOLERANCE : 0.05   
 -0.10

3 - R<sub>o</sub>HS COMPATIBLE PRODUCT SPECIFICATIONS   
 a - PLATING :   
 "LF" MEANS THE PRODUCT IS LEAD-FREE, 2 μm MINIMUM MATTE   
 TIN OVER 1.27 μm MINIMUM NICKEL UNDERPLATE   
 b - MANUFACTURING PROCESS COMPATIBILITY   
 THE HOUSING WILL WITHSTAND EXPOSURE TO 260°C PEAK   
 TEMPERATURE FOR 30 SECONDS MAX IN A CONVECTION, INFRA-RED   
 OR VAPOR PHASE OR REFLOW OVEN

c - LABELLING :   
 MEETS PACKAGING SPECS AS PER GS-14-920   
 d - LEGAL STATEMENT : SEE GS-47-0004



PRELIMINARY

spec ref	GS-12-1326	dr	Cyril Jeune	2014/12/02	projection	mm	size	A3	scale	6:1
tolerance std	ISO 406 ISO 1101	eng	Cyril Jeune	2015/11/18			ecn no	-	rel level	Preliminary
TOLERANCES UNLESS OTHERWISE SPECIFIED		chr	-	-						
surface	linear	appr	-	-	product family	-	rel level	Preliminary		
ISO 1302	angular	0.X	±		MINITEK RECEPTACLE 2MM		dwg no	10131933		rev
		0.XX	±		ASSEMBLY HCC DR SMT			2		
		0.XXX	±		www.fci.com					
		0°	±°	cat. no.	-	Product - Customer Drw	sheet 1 of 1			

# Mouser Electronics

Authorized Distributor

Click to View Pricing, Inventory, Delivery & Lifecycle Information:

## [FCI / Amphenol:](#)

[10131933-940ULF](#) [10131933-126ULF](#) [10131933-132ULF](#) [10131933-214ULF](#) [10131933-206ULF](#) [10131933-314ULF](#) [10131933-334ULF](#) [10131933-232ULF](#) [10131933-150ULF](#) [10131933-138ULF](#) [10131933-934ULF](#) [10131933-946ULF](#) [10131933-244ULF](#) [10131933-208ULF](#) [10131933-308ULF](#) [10131933-914ULF](#) [10131933-104ULF](#) [10131933-112ULF](#) [10131933-928ULF](#) [10131933-922ULF](#) [10131933-336ULF](#) [10131933-908ULF](#) [10131933-348ULF](#) [10131933-130ULF](#) [10131933-228ULF](#) [10131933-124ULF](#) [10131933-248ULF](#) [10131933-320ULF](#) [10131933-340ULF](#) [10131933-328ULF](#) [10131933-920ULF](#) [10131933-912ULF](#) [10131933-106ULF](#) [10131933-332ULF](#) [10131933-936ULF](#) [10131933-226ULF](#) [10131933-246ULF](#) [10131933-346ULF](#) [10131933-338ULF](#) [10131933-904ULF](#) [10131933-948ULF](#) [10131933-212ULF](#) [10131933-350ULF](#) [10131933-134ULF](#) [10131933-234ULF](#) [10131933-146ULF](#) [10131933-316ULF](#) [10131933-114ULF](#) [10131933-910ULF](#) [10131933-230ULF](#) [10131933-110ULF](#) [10131933-204ULF](#) [10131933-242ULF](#) [10131933-220ULF](#) [10131933-916ULF](#) [10131933-120ULF](#) [10131933-210ULF](#) [10131933-918ULF](#) [10131933-240ULF](#) [10131933-236ULF](#) [10131933-222ULF](#) [10131933-122ULF](#) [10131933-128ULF](#) [10131933-136ULF](#) [10131933-310ULF](#) [10131933-926ULF](#) [10131933-306ULF](#) [10131933-116ULF](#) [10131933-324ULF](#) [10131933-930ULF](#) [10131933-148ULF](#) [10131933-312ULF](#) [10131933-144ULF](#) [10131933-906ULF](#) [10131933-326ULF](#) [10131933-330ULF](#) [10131933-118ULF](#) [10131933-224ULF](#) [10131933-950ULF](#) [10131933-342ULF](#) [10131933-318ULF](#) [10131933-250ULF](#) [10131933-938ULF](#) [10131933-142ULF](#) [10131933-218ULF](#) [10131933-932ULF](#) [10131933-108ULF](#) [10131933-140ULF](#) [10131933-216ULF](#) [10131933-322ULF](#) [10131933-944ULF](#) [10131933-238ULF](#) [10131933-924ULF](#) [10131933-344ULF](#) [10131933-942ULF](#) [10131933-304ULF](#)