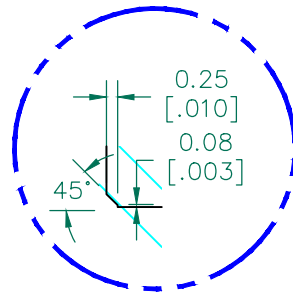


SEE DETAIL "A"



DETAIL "A"  
SCALE: 5:1

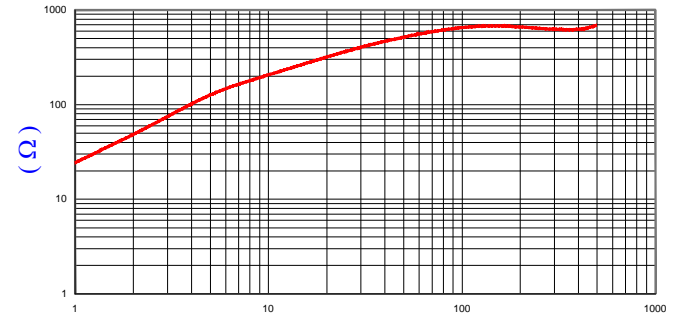
RoHS

NOTES:

1. COSMETIC SPECIFICATION REFER TO WI-QA-038.

IMPEDANCE ( Z )			
Frequency	25 MHz	100 MHz	300 MHz
Nominal (REF)	361 Ω	653 Ω	627 Ω
Minimum	- Ω	457 Ω	- Ω

Z vs. FREQUENCY  
(REF. ONLY)



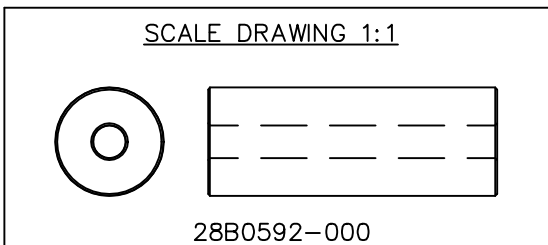
FREQUENCY (MHz)

AGILENT E4991A Impedance/Material Analyzer  
HP 16092A Test Fixture REF. 5125

FERRITE CORE DIMENSIONS (SPEC):MM [IN]

A	15.00 [.591]	+	0.30 [.012]
B	4.50 [.177]	+	0.10 [.004]
C	40.00 [1.575]	+	0.79 [.031]

WEIGHT/1000    31.88 kgs    70.28 lbs



DIMENSIONS ARE IN mm (INCHES).				This print is the property of Laird Tech. and is loaned in confidence subject to return upon request and with the understanding that no copies shall be made without the written consent of Laird Tech. All rights to design or invention are reserved.						
REV	DESCRIPTION	DATE	INT							
G	UPDATE Z SPEC	04/09/15	Jcai	PROJECT/PART NUMBER: <b>28B0592-000</b>		REV <b>G</b>	PART TYPE: FERRITE CORE	DRAWN BY: JRK		
F	UPDATE COMPANY LOGO	12/28/12	QIU							
E	UPDATE MIN Z SPEC & COMPANY LOGO	06/04/07	JRK							
D	CORRECT MIN Z SPEC @ 100 MHZ	07/27/06	JRK							
C	ADD CURVE ADD Z SPECS	09/14/05	JRK							
B	RE-ACTIVATE PRINT	01/21/05	JRK							
A	ORIGINAL DRAFT	04/16/04	JRK							
DATE:	04/16/04	SCALE:	2 : 1						MATERIAL:	FERRITE
CAD #	28B0592-000-G	TOOL #	B0592							