



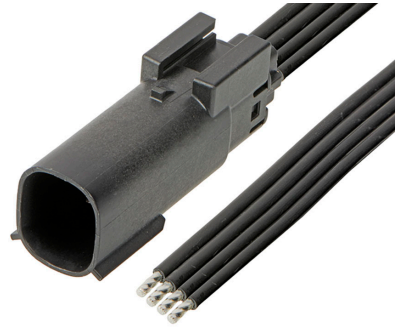
Part Number : [2162881041](#)

Product Description : MX150 Male-to-Pigtail Off-the-Shelf (OTS) Cable Assembly, Dual Row, 150.00mm Length, Tin (Sn) Plating, 4 Circuits, Black

Series Number : 216288

Status : Active

Product Category : Power and Signal Cable Assemblies



Documents & Resources

Drawings

[Drawing 2162881041_sd.pdf](#)

[Packaging Design Drawing 2162801021-001.pdf](#)

3D Models and Design Files

[3D Model 2162881041_stp.zip](#)

Product Environment Compliance

Compliance

GADSL/IMDS	Not Relevant
China RoHS	
EU ELV	Not Relevant
Low-Halogen Status	Low-Halogen per IEC 61249-2-21
REACH SVHC	Not Contained per D(2024)4144-DC (27 June 2024)
EU RoHS	Compliant per EU 2015/863

Multiple Part Product Compliance Statements

- Eu RoHS
- REACH SVHC
- Low-Halogen

Multiple Part Industry Compliance Documents

- IPC 1752A Class C
- IPC 1752A Class D
- Molex Product Compliance Declaration

- IEC-62474

- chemSHERPA (xml)

EU RoHS Certificate of Compliance

Part Details

General

Status	Active
Category	Power and Signal Cable Assemblies
Series	216288
Description	MX150 Male-to-Pigtail Off-the-Shelf (OTS) Cable Assembly, Dual Row, 150.00mm Length, Tin (Sn) Plating, 4 Circuits, Black
Application	Power, Wire-to-Board, Wire-to-Wire, Automotive
Assembly Configuration	Single Ended Connector
Connector to Connector	MX150-to-Pigtail
Product Family	MX150 Sealed and Unsealed Connector System
Product Name	MX150
Type	Discrete Wire Assembly, Sealed Assembly
UPC	193264714711

Electrical

Current - Maximum per Contact	22.0A
Voltage - Maximum	14V DC

Physical

Cable Length	150.00mm
Circuits (Loaded)	4
Circuits (maximum)	4
Color - Resin	Black
Gender	Male-Pigtail
Lock to Mating Part	Yes
Material - Metal	High Performance Alloy (HPA)
Material - Plating Mating	Tin

Material - Plating Termination	Tin
Material - Resin	SPS/Nylon
Net Weight	217.600/g
Number of Rows	2
Overmolded	No
Packaging Type	Bag
Pitch - Mating Interface	3.50mm
Single Ended	Yes
Termination Interface Style	Crimp or Compression
Wire/Cable Type	TXL Stranded
Wire Insulation Diameter	2.70mm max.
Wire Size (AWG)	14

Mates With / Use With

Mates with Part(s)

Description	Part Number
MX150 Mat-Sealed Dual Row Female Connector Assemblies	<u>33472</u>