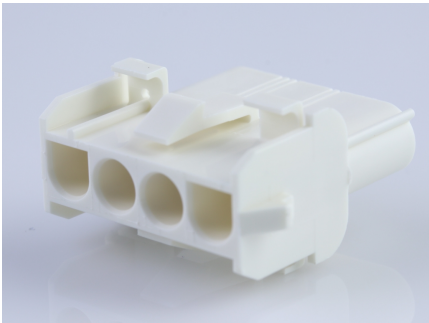




**Part Number :** [366440004](#)  
**Product Description :** 2.13mm Diameter MLX  
Pin and Socket Receptacle, 4 Circuit, PA  
Polyamide Nylon 6/6 94V-2, Glow-Wire  
Capable  
**Series Number :** 36644  
**Status :** Active  
**Product Category :** Connector Housings



## Documents & Resources

### Drawings

[Drawing 366440004\\_sd.pdf](#)  
[Packaging Design Drawing PK-42022-XX-001.pdf](#)

### 3D Models and Design Files


[3D Model 366440004\\_stp.zip](#)

### Specifications

[Product Specification PS-36644-001-001.pdf](#)

## Product Environment Compliance

### Compliance

|                    |   |
|--------------------|---|
| GADSL/IMDS         | Not Relevant  |
| China RoHS         |  |
| EU ELV             | Not Relevant  |
| Low-Halogen Status | Not Low-Halogen per IEC 61249-2-21  |
| REACH SVHC         | Not Contained per D(2024)4144-DC (27 June 2024)                                       |
| EU RoHS            | Compliant per EU 2015/863   |

### Multiple Part Product Compliance Statements

- Eu RoHS
- REACH SVHC
- Low-Halogen

### Multiple Part Industry Compliance Documents

- IPC 1752A Class C

- IPC 1752A Class D
- Molex Product Compliance Declaration
- IEC-62474
- chemSHERPA (xml)

## EU RoHS Certificate of Compliance

---

### Part Details

#### General

|                |  |
|----------------|--|
| Status         | Active   |
| Category       | Connector Housings   |
| Series         | 36644  |
| Description    | 2.13mm Diameter MLX Pin and Socket Receptacle, 4 Circuit, PA Polyamide Nylon 6/6 94V-2, Glow-Wire Capable  |
| Application    | Power, Wire-to-Wire  |
| Comments       | <p>This Molex product is manufactured from material that has the following ratings, tested by independent agencies: a) A Glow Wire Ignition Temperature (GWIT) of at least 775 deg C per IEC 60695-2-13. b) A Glow Wire Flammability Index (GWFI) above 850 deg C per IEC 60695-2-12 and hence complies with the requirements set out in the International Standard IEC 60335-1 5th edition - household and similar electrical appliances - safety, section 30 Resistance to heat and fire. The customers using this product must determine its suitability for use in their particular application through testing or other acceptable means as described in end-product glow-wire flammability test standard IEC 60695-2-11 and any applicable product end-use standard(s). If it is determined during the customer's evaluation of suitability, that higher performance is required, please contact Molex for possible product options.</p> |
| Product Family | MLX Power Connectors   |
| Product Name   | MLX  |
| UPC            | 800756935171   |

## Agency

|     |         |
|-----|---------|
| CSA | LR19980 |
| UL  | E29179  |

## Physical

|                               |                |
|-------------------------------|----------------|
| Circuits (maximum)            | 4              |
| Color - Resin                 | Natural        |
| Flammability                  | 94V-2          |
| Gender                        | Receptacle     |
| Glow-Wire Capable             | Yes            |
| Keying to Mating Part         | None           |
| Lock to Mating Part           | Yes            |
| Material - Resin              | Nylon          |
| Net Weight                    | 4.400/g        |
| Number of Rows                | 1              |
| Packaging Type                | Bag            |
| Panel Mount                   | No             |
| Pitch - Mating Interface      | 6.35mm         |
| Pitch - Termination Interface | 6.35mm         |
| Polarized to Mating Part      | Yes            |
| Stackable                     | No             |
| Temperature Range - Operating | -55° to +105°C |

---

## Mates With / Use With

### Mates with Part(s)

| Description                                   | Part Number  |
|---|--------------|
| MLX Plug Housings                             | <u>36643</u> |
| 2.13mm Diameter MLX Power Crimp Housing Plugs | <u>42021</u> |

### Use with Part(s)

| Description              | Part Number  |
|--------------------------|--------------|
| MLX Male Crimp Terminals | <u>42023</u> |

---

This document was generated on Sep 20, 2024